

## Specifications

†RMO: roll media option

		Acuity Select - 4/6/8 channel			Acuity Select HS 4/6 channel		
		Standard bed	X2 bed		Standard bed	X2 bed	
<b>Rigid media</b>		Max media size: 98.4" x 49.2" x 2.0" (2.5 x 1.25m x 50.8 mm) Max print area: 98.8" x 49.6" (2.51 x 1.26m)	Max media size: 98.4" x 120" x 2.0" (2.5 x 3.05m x 50.8 mm) Max print area: 98.8" x 120.4" (2.51 x 3.06m)		Max media size: 98.4" x 49.2" x 2.0" (2.5 x 1.25m x 50.8 mm) Max print area: 98.8" x 49.6" (2.51 x 1.26m)	Max media size: 98.4" x 120" x 2.0" (2.5 x 3.05m x 50.8 mm) Max print area: 98.8" x 120.4" (2.51 x 3.06m)	
<b>Roll media</b>		Roll width: 35.4" to 86.6" (0.9 to 2.2m), Maximum print width: 86.2" (2.19m), Maximum roll weight: 110lbs (50kg) Maximum roll diameter: 9.4" (240mm), Inside core diameter: 3" (76.2mm)					
<b>Ink</b>	<b>Type</b>	Fujifilm Uvijet KA, KI and KV series UV curable inks					
	<b>Package</b>	2 liter pouch (cyan, magenta, yellow, black), 1 liter pouch (white, varnish)					
	<b>Configuration</b>	4 channel - CMYK 6 channel - CMYK + WW or WV 8 channel - CCMMYK + WW or WV			4 channel - CMYK 6 channel - CMYK + WW or WV or CM		
<b>Printheads</b>	Toshiba Tec CE-2 greyscale, variable drop 6-42pl						
<b>Printing resolution</b>	Image quality is equivalent to 1,200dpi resolution or higher						
<b>Connectivity</b>	10/100/1000 Base-T						
<b>RIP recommendation</b>	ColorGATE Production Server or Caldera GrandRIP						
<b>Operating environment</b>	64-86 degrees F, 30-70% RH non-condensing, 5-10 air changes per hour						
<b>Power requirements</b>	2 x 200 to 240 VAC, 50/60Hz single phase, 16A. Circuit breaker: 16A						
<b>Dimensions W x L x H</b>	<b>Printer only</b>	183.4" x 78.7" x 51.1" (4.66 x 2.0 x 1.3m)	183.4" x 150.7" x 51.1" (4.66 x 3.83 x 1.3m)		183.4" x 78.7" x 48.4" (4.66 x 2.0 x 1.3m)	183.4" x 150.8" x 48.4" (4.66 x 3.83 x 1.3m)	
	<b>Printer &amp; RMO†</b>	183.4" x 90.5" x 51.1" (4.66 x 2.3 x 1.3m)	183.4" x 162.2" x 51.1" (4.66 x 4.12 x 1.3m)		183.4" x 90.5" x 48.4" (4.66 x 2.3 x 1.3m)	183.4" x 162.2" x 48.4" (4.66 x 4.12 x 1.3m)	
<b>Weight</b>	<b>Printer only</b>	1715 lbs (775kg)	3561 lbs (1615kg)		1750 lbs (785kg)	3561 lbs (1625kg)	
	<b>Printer &amp; RMO†</b>	2156 lbs (1025kg)	4001 lbs (1865kg)		2260 lbs (1035kg)	4106 lbs (1875kg)	

## Print modes and speeds

Mode	Select - 4 and 6 channel			Select - 8 channel			Select HS - 4 channel			Select HS - 6 channel		
	Standard flatbed	X2 flatbed	Roll	Standard flatbed	X2 flatbed	Roll	Standard flatbed	X2 flatbed	Roll	Standard flatbed	X2 flatbed	Roll
	ft <sup>2</sup> /hr	ft <sup>2</sup> /hr	ft <sup>2</sup> /hr	ft <sup>2</sup> /hr	ft <sup>2</sup> /hr	ft <sup>2</sup> /hr	ft <sup>2</sup> /hr	ft <sup>2</sup> /hr	ft <sup>2</sup> /hr	ft <sup>2</sup> /hr	ft <sup>2</sup> /hr	ft <sup>2</sup> /hr
Express	353	368	276	353	368	276	646	696	466	646	696	466
Production Squared	-	-	-	264	272	202	-	-	-	498*	535*	410*
Production	219	226	182	-	-	-	404	431	309	404	431	309
Production Smooth	-	-	-	219	226	182	-	-	-	404*	431*	309*
Quality Squared	-	-	-	-	-	-	337	358	272	337	358	272
Quality	151	155	125	151	155	125	285	302	229	285	302	229
Quality Density	84	87	70	84	87	70	157	166	126	157	166	126
Quality Smooth	-	-	-	-	-	-	157	166	126	157	166	126
Fine Art	122	126	101	122	126	101	227	241	183	227	241	183
High Definition	64	66	56	64	68	56	-	-	-	-	-	-
Quality Layered (white) 2 layer	75**	78**	62**	75	78	62	-	-	-	142	150	113
Quality Layered (white) 3 layer	50**	52**	42**	50	52	42	-	-	-	94	98	74
Varnish gloss mode	43**	43**	-	43	43	-	-	-	-	73	87	-

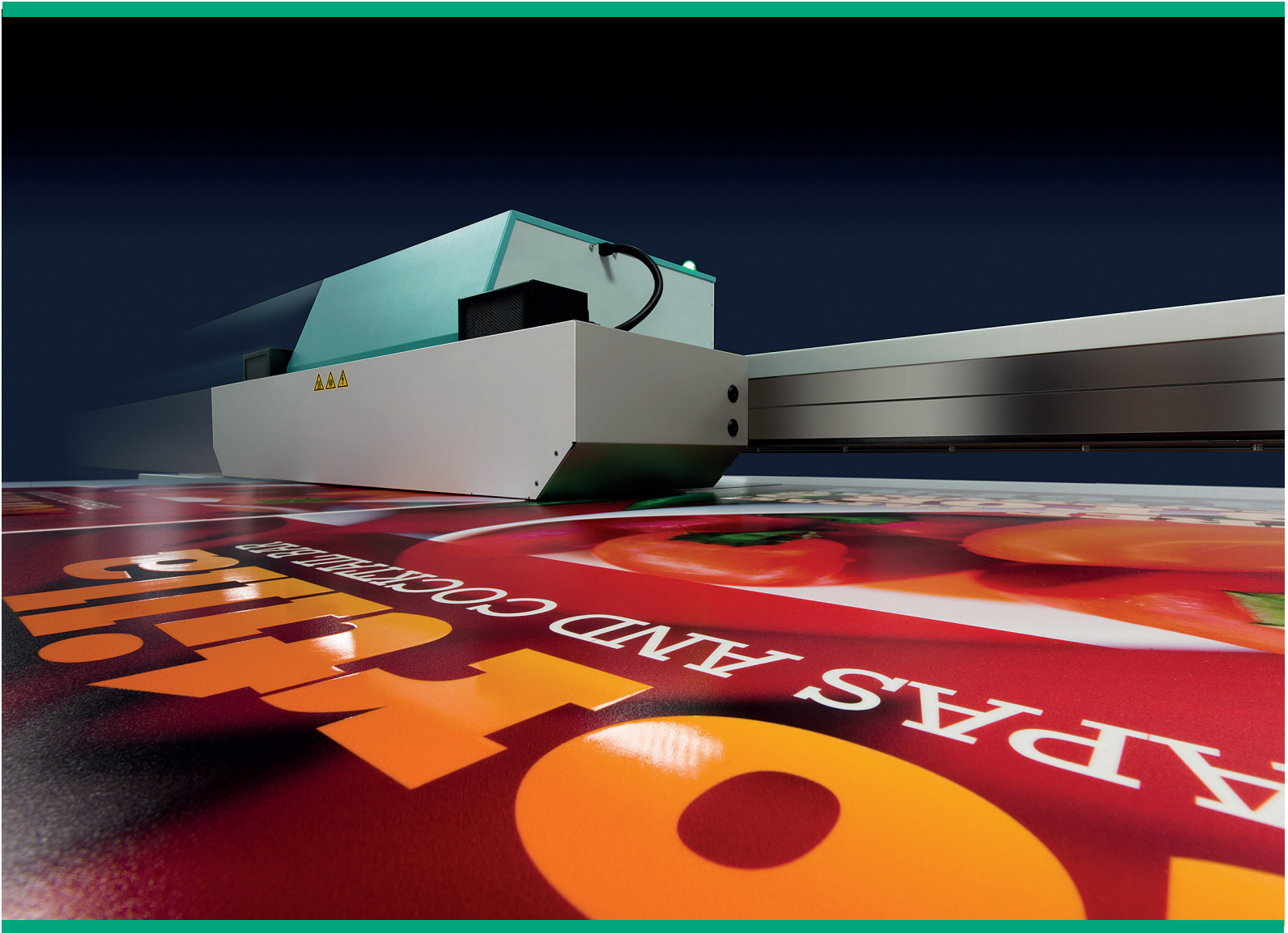
\*Only available in C/C/M/M/Y/K configuration \*\*Only available in 6 channel configuration that includes white

www.fujifilmgraphics.com

**FUJIFILM**

FUJIFILM North America Corporation, Graphic Systems Division • Phone: 800-877-0555 • Email: contactgraphics@fujifilm.com • Web: www.fujifilmgraphics.com

Acuityselectseries\_150504



## ACUITY Select series

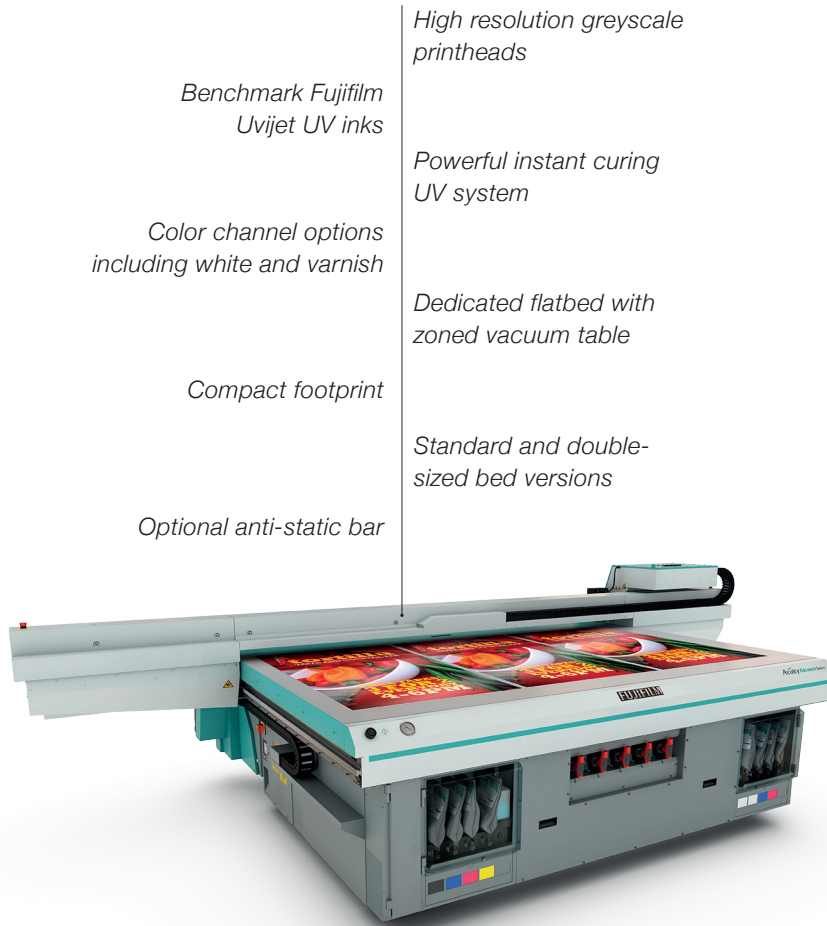
### PRODUCT BROCHURE

Outstanding quality UV inkjet flatbed printers for PoP and customized for creative printing



**Acuity** Select

## The all-in-one mid-range flatbed...



*High resolution greyscale printheads*

*Benchmark Fujifilm Uvijet UV inks*

*Powerful instant curing UV system*

*Color channel options including white and varnish*

*Dedicated flatbed with zoned vacuum table*

*Compact footprint*

*Standard and double-sized bed versions*

*Optional anti-static bar*

It's the ultimate platform for printing on rigid, flexible and even roll media, delivering near-photographic quality images across a diverse range of creative print applications. Acuity Select printers feature the latest technology to deliver superb performance and are truly affordable with a range of investment and upgrade options.

### **Flexible production system**

- ▶ Industry leading ink performance delivering strong, vibrant images
- ▶ Print on a broad range of rigid and flexible media, materials and objects
- ▶ Superb print quality with a wide range of creative possibilities
- ▶ Consistent results and reliable performance
- ▶ Low ink consumption and economical cost-in-use

## ...from the leader in wide-format printing



### **Benchmark performance**

The Acuity mid-range flatbed platform has been the industry benchmark since 2007, delivering excellent results and proven performance. With thousands of machines installed around the world and continuous product development, the latest models now produce the best results ever.

### **Award-winning UV inks**

Fujifilm was the first company to commercialize UV-curable inks in the wide format inkjet industry. Thanks to a market-leading investment program, Uvijet inks have been continuously improved and refined to deliver benchmark color vibrancy and performance.

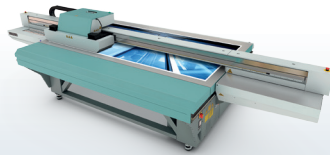
### **Industry expertise**

Through our excellent support infrastructure, Fujifilm provides a world-class service before, during and after installation. Years of wide format experience and application expertise enables us to provide practical advice about printing with Acuity Select printers.



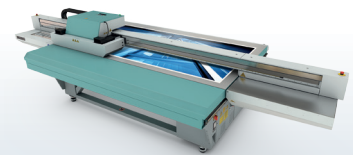
## The benchmark printer platform

With nearly twenty Acuity Select machine configurations available to meet a wide range of user needs, but the range is built around two main platforms.



### Acuity Select

The most versatile Acuity Select with up to 8 color channels, including white and varnish options, suitable for a wide range of creative print applications.



### Acuity Select HS

The most productive Acuity with up to 6 color channels, including white and varnish options, suitable for printers demanding a faster production machine.



#### ^ Dedicated rigid media handling

Acuity Select printers are designed for flexibility - a full size vacuum table can handle almost any sheet material. It secures rigid and flexible media and holds it perfectly flat for consistent, high quality print across every sheet.

#### ^ Roll media option

A compact roll-to-roll unit extends the versatility of Acuity Select printers. High quality images can be printed on roll media which look great even at close viewing distances.





museum graphics



window graphics



varnish effects



industrial keypads



spot varnishing



package proofing



day/night backlit displays



clear film window graphics

## Create it all with Acuity Select + Uvijet inks

With outstanding image quality and excellent adhesion to a broad range of materials you can produce an amazing variety of printed products for distance and close-viewing.

With an Acuity Select and Uvijet UV ink technology you can:

- ▶ Produce point of sale graphics, indoor signage, industrial graphics and product decoration, printing direct to rigid media
- ▶ Print on PVC, polycarbonate, styrene, acrylic, paper, board, wood, aluminum composite and many other materials
- ▶ Create proofs for a customer which are identical to the production run
- ▶ Print stunning color images: greyscale print heads vary dot size to produce high definition and smooth graduations (in skin tones for example). Uvijet UV inks produce vibrant images and enable you to match a wide range of brand and spot colors
- ▶ Use varnish to add impact using a spot or flood varnish with uniform finish (6 and 8 channel models only)
- ▶ Use white ink to produce images on transparent or colored materials
- ▶ Print color-white-color layers in one pass for two-sided images on transparent materials
- ▶ Print stunning backlit images direct to transparent media
- ▶ Optional ionizing bar to reduce the effects of static on some synthetic materials
- ▶ Excellent image quality uniformity through full print-bed mapping
- ▶ Double strike white capability for extra-high opacity and ultra smooth whites
- ▶ Two additional cyan and magenta color channels maintain excellent image quality at high print speeds (Acuity Select 8 channel or Select HS 6 channel models only)





close view signage



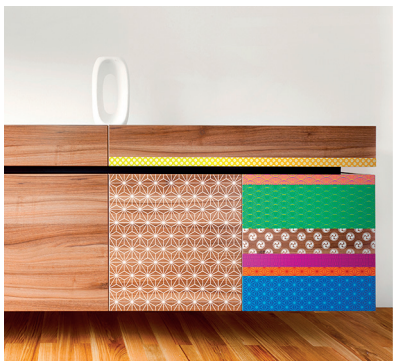
short-term outdoor signage



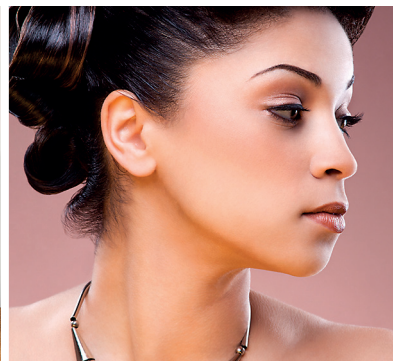
pop-up and roll-up displays



interior decoration



furniture decoration



cosmetics retail graphics



transparent reverse prints



wood prints



architectural decoration



### UV inks engineered by Fujifilm

A wide format inkjet printer is only as good as the ink that fuels it. Manufactured at Fujifilm's award-winning\* production facility in the UK, the company's industry-leading Uvijet ink incorporates unique Micro-V ultrafine dispersion technology to maximize pigment loading - delivering strong, vibrant, lightfast colors with superior color gamut.

With variable drop-size printheads and highly pigmented inks, Acuity Select printers lay down a thin ink film to minimize production costs.

\* Fujifilm's ink manufacturing plant in Broadstairs, UK, won the "Best Process Plant" award in the UK Best Factory Awards 2011.



special effect materials



object decoration



art presentation



industrial applications



## Designed for your production environment

Space isn't a problem. Acuity Select printers are built to fit into the tightest production spaces and their open design give you flexibility in the way you work with media in your workspace:

- ▶ Compact footprint and accessible working zones
- ▶ Dedicated flatbed design
- ▶ Available in two bed sizes
- ▶ Set up rigid materials while printing on the roll unit
- ▶ Quick change between rigid and flexible media jobs

### Zoned vacuum flatbed

The vacuum table is dedicated to rigid media handling. It is a robust worksurface which holds materials perfectly flat for printing with pin-point precision even if you want to print the same sheet more than once.

- ▶ Edge to edge printing
- ▶ Print over the same sheet multiple times with perfect registration
- ▶ 6 dedicated vacuum zones tailored to common media sizes reduces the amount of bed masking required
- ▶ Adjustable vacuum strength to provide optimum handling for different materials
- ▶ Simple switching between print modes and materials



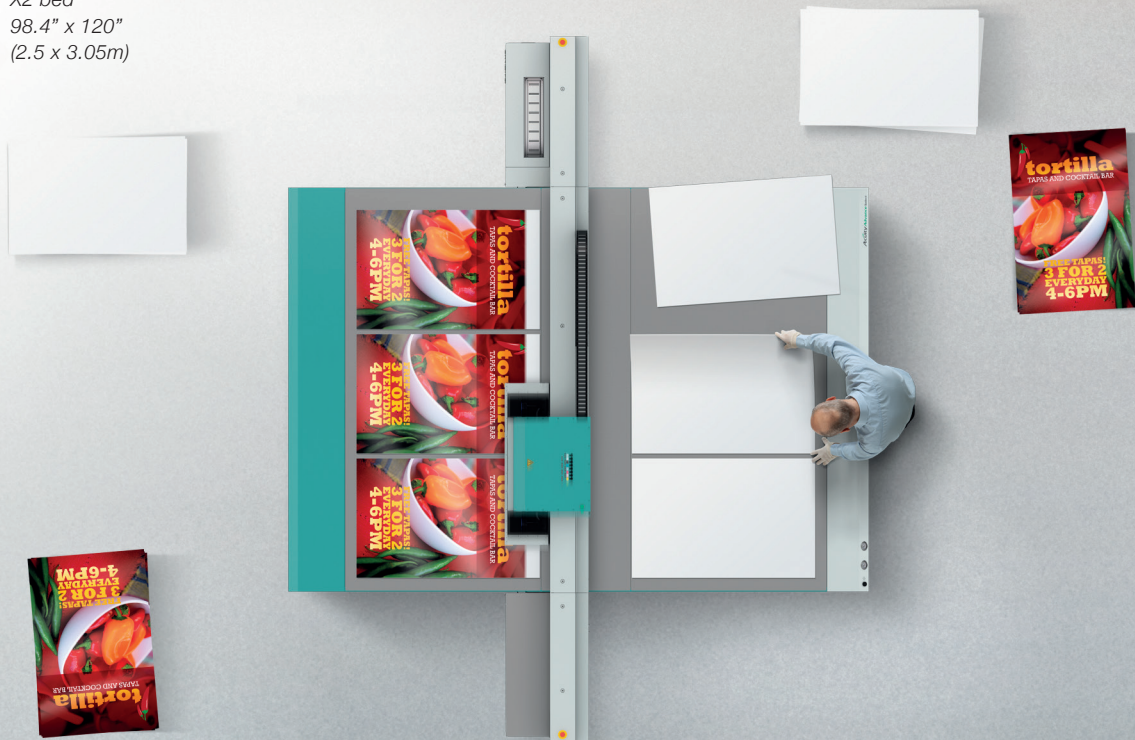
Standard bed  
49.2" x 98.4"  
(1.25 x 2.5m)



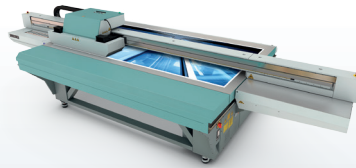
X2 bed  
98.4" x 120"  
(2.5 x 3.05m)

### Non-stop production with X2

The double size print bed on X2 models has dual registration points which enable you to print at one end whilst setting up at the other, for uninterrupted production. It also enables you to print large images up to 98.4" x 120" (2.5 x 3.05m).

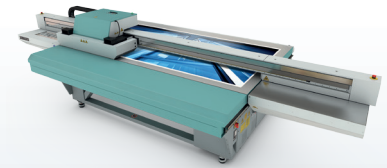


## Acuity Select series overview



### Acuity Select

The most *popular* Acuity Select with up to 8 color channels



### Acuity Select HS

The more *productive* Acuity with up to 6 color channels

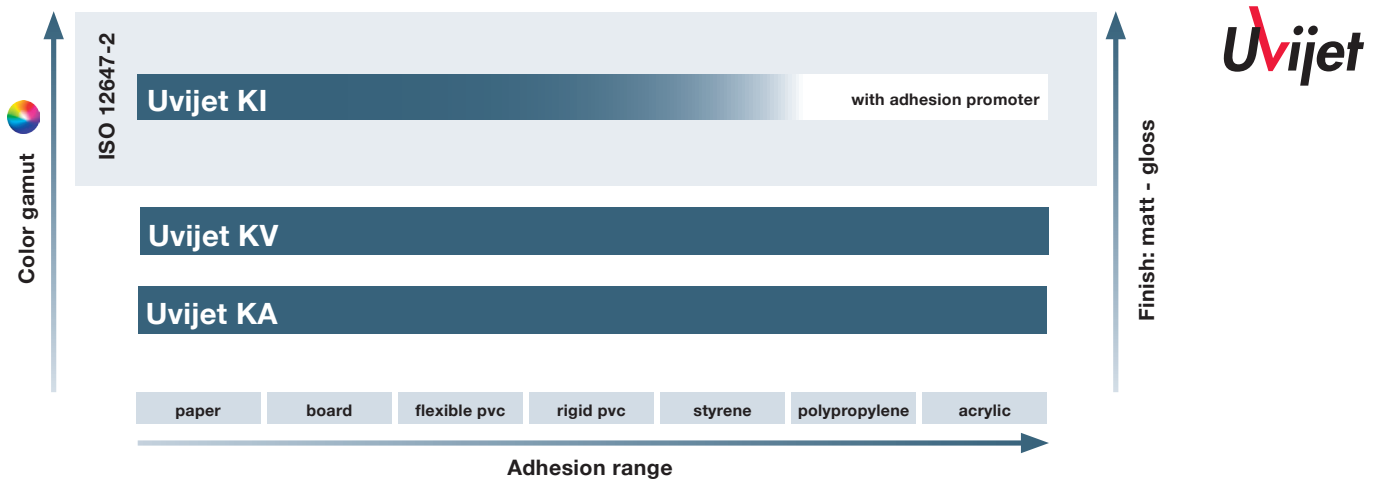
	4 channel	6 channel	8 channel	4 channel	6 channel
Maximum print speed (ft <sup>2</sup> /hr)	368	368	368	696	696
Image quality	★★★★★	★★★★★	★★★★★	★★★★	★★★★
Double bed X2 version	●	●	●	●	●
Roll media option	●	●	●	●	●
Modular upgrade path	●	●		●	
Vacuum zones	6*	6*	6*	6*	6*
Full-bed mapping	●	●	●	●	●
Varnish option		●	●		●
White ink option		●	●		●
Double white option		●	●		●
Enhanced productivity modes			●		●

\* 7 zones on X2 models including central zone

**Acuity Select**

**Acuity Select HS**

## A guide to Uvijet inks for Acuity Select printers



**Uvijet**