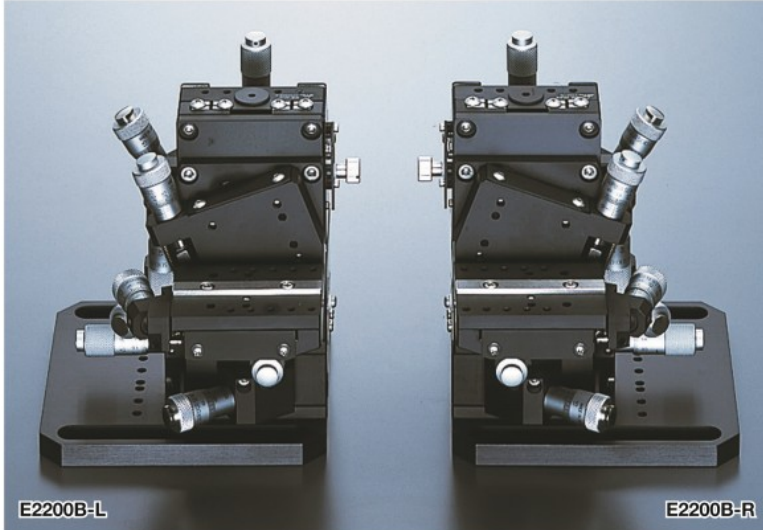
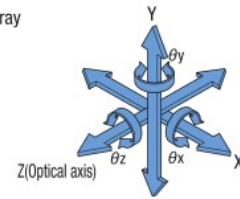


Manual Stage Alignment Unit (6-axis): E2200B

CAD
2D

RoHS

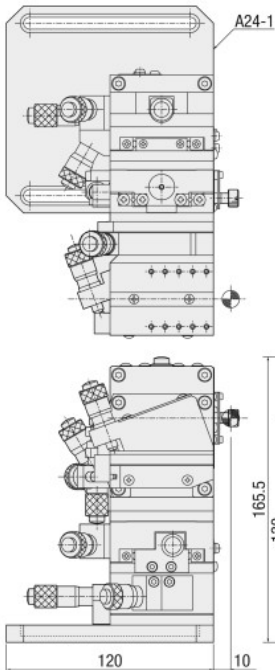
- 2200 series is 6-axis unit, which consist of the high resolution manual stage, tilt stage and goniometer stage.
- This is the most effective unit for multi core device alignment, which need rotation control of optical axis such as fiber array and an optical waveguide.
- Available an inner-tilt type. Please contact us for detail.



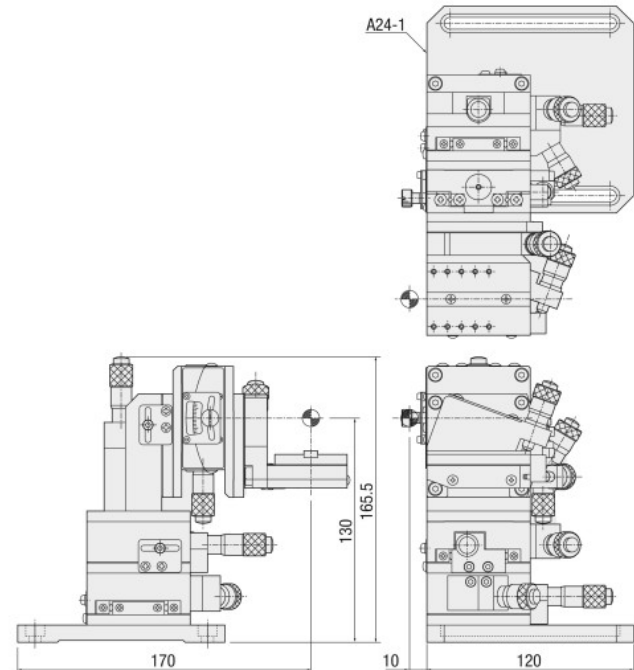
- Available an unit-package for splitter alignment.
- Prepare the measurement equipment (CSM) which is enabled facing and GAP adjustment.
- ▶ P.4-068 Waveguide manual alignment package (E8203B)
- ▶ P.4-040 Contact sensing meter(CMS)

Dimensional outline drawings

E2200B-L



E2200B-R

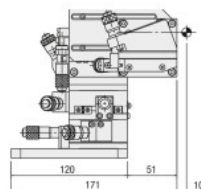


SPEC							
		X	Y	Z	θ_x	θ_y	θ_z
L	E2200B-L	B10-60LN	B30-60LK	B10-60RN	B51-60LN	B58-60UC	
R	E2200B-R	B10-60RN	B30-60RK	B10-60LN	B51-60RN	B58-60UCR	
Travel distance		Coarse motion : $\pm 6.5\text{mm}$ Fine motion : $\pm 0.3\text{mm}$			$\pm 2.5^\circ$		$\pm 4^\circ$
Resolution		Coarse : $10\mu\text{m}/\text{scale}$ Fine : $0.5\mu\text{m}/\text{scale}$			$29.3''/\text{scale}$	$27.8''/\text{scale}$	$33''/\text{scale}$
Optical axis height		130mm					

Model/Option

E2200 W B- L R

L : Left type, R : Right type
Blank : Normal, W : Over hang type
Unit base model number



E2200WB-L
Available over hang type

Accessory: Installation screws (Hexagon socket head 4 of M6-12)

Optical fiber alignment

Guidance

WG
alignment

LD/PD
alignment

Alignment
components

Manual
alignment unit

Motorized
alignment unit

Device unit

Fiber holders

Device holders

Adaptors

Contact
sensing meter

Accessories
for alignment

Stereomicroscope

Lens tube

Monitoring
unit

CCD
camera

Monitor

Lighting

UV equipment

Pump

Probe

Alignment
system

Alignment
controller

WG
alignment

LD/PD
alignment