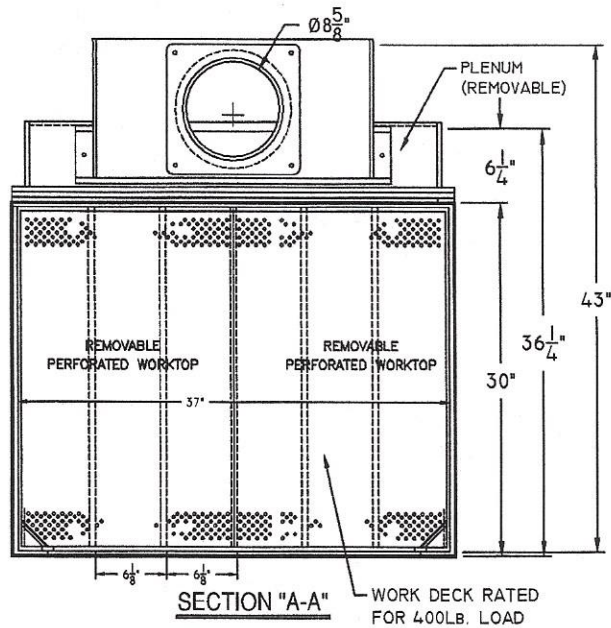




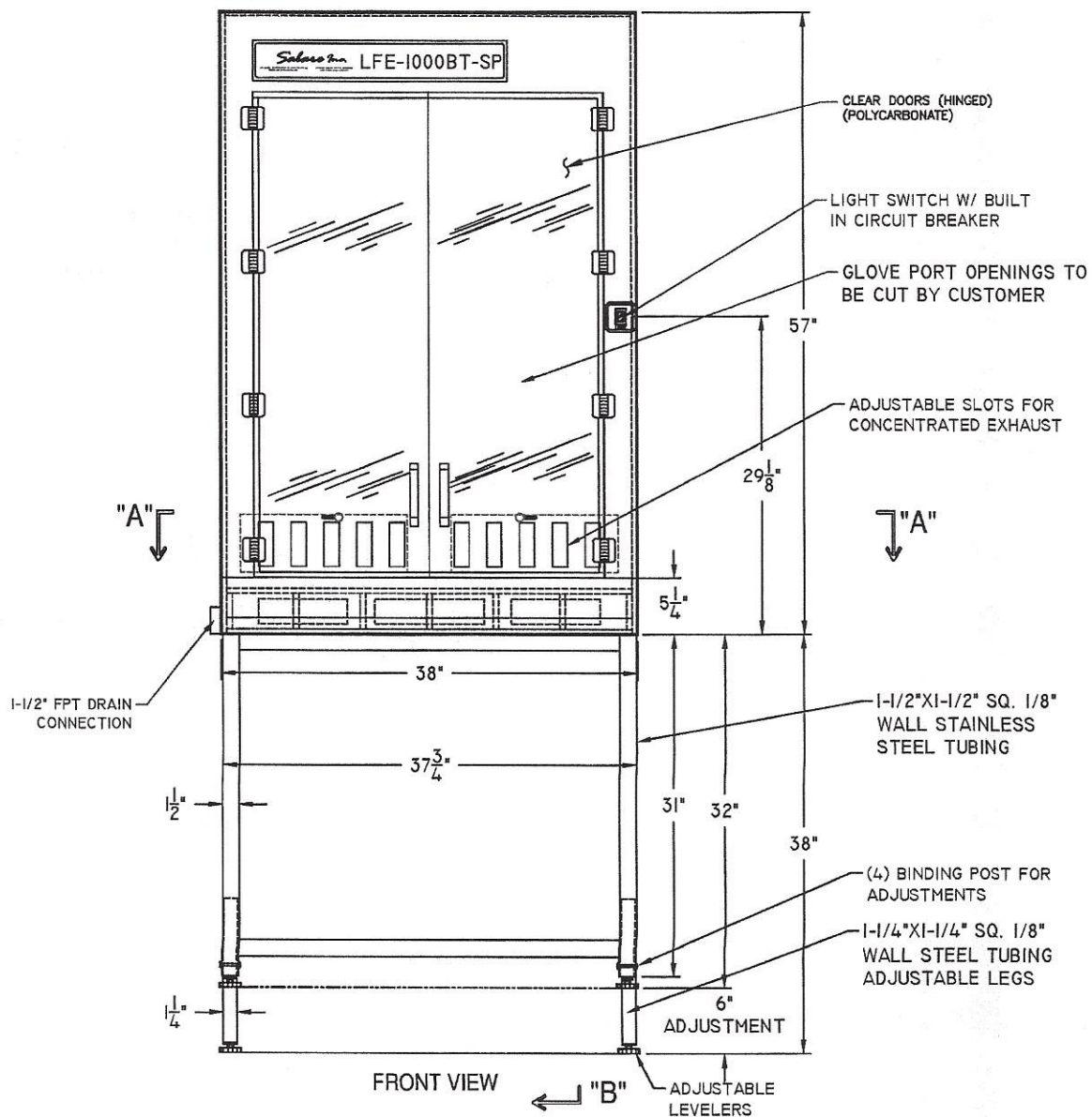
P.O. Box 583 -- Henderson, NC 27536
Tel: 800-293-1004
252-431-1208
Fax: 252-430-0025
Web: www.salareinc.com

LFE-1000BT
Special Customized
Fire Retardant
Polypropylene
Bench-Top Laminar Flow
Total Exhaust Fume Hood

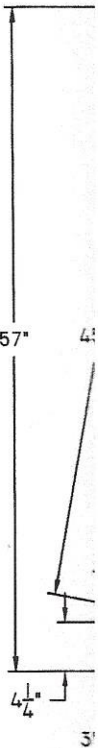
OPERATION & SAFETY MANUAL



← "B"



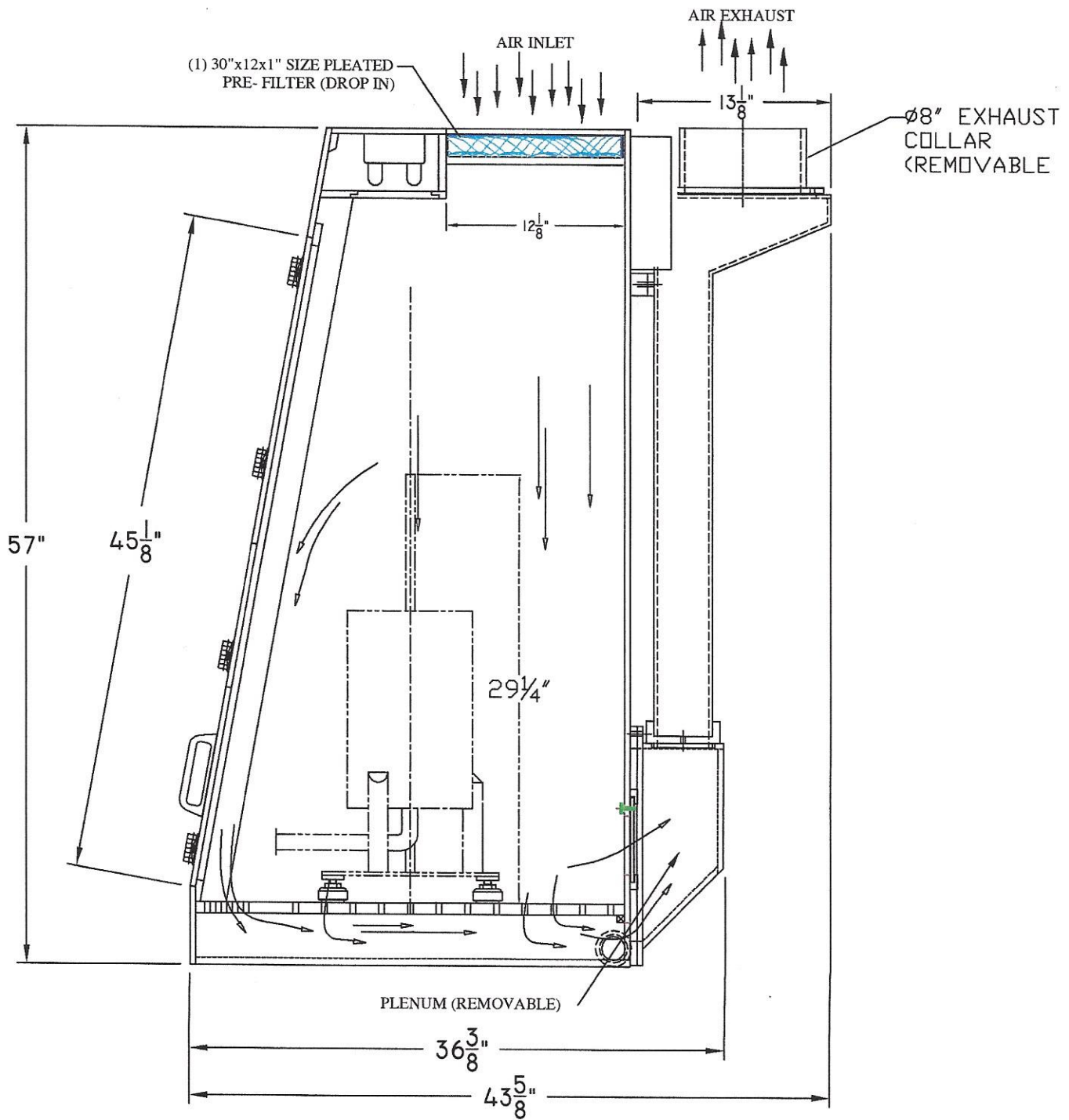
FLUORE
FIXT
LAMPS (



LFE-1000-SP

Bench Top Model

AIR FLOW DIAGRAM

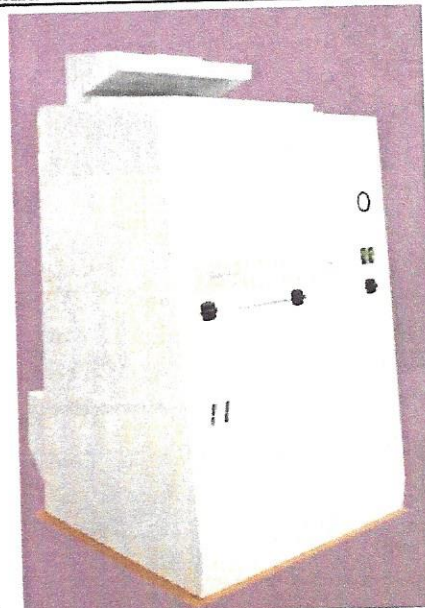


LFE-1000BT FR Special Configuration w/o inner fan**Nominal 3-Foot, Counter Top FM4910 Compliant Laminar Flow and Total Exhaust Work Station****Special Features include:**

- **No inner fan for supply air**
- **Size altered see below**
- **Add full length clear doors in place of sash**-Doors to be made of clear polycarbonate and hinged at the sides to swing completely out of the way for full access to the interior.
- **Add glove port openings in clear doors** -Glove ports will be sized to receive customer-supplied gloves.

Standard Features include:

- Constructed of FM 4910 Compliant all white ****CP7D** non-corrosive stress-relieved polypropylene or Flametec PVC, all heat-seam welded and tested.
- Ergonomic sloping front for easy access and extended reach.
- The worktop is constructed from ½-inch thick polypropylene, segmented for easy access and cleaning.
- The furthestmost front portion of the worktop is heavily perforated at the front to allow for some inward flow of room air ensuring operator protection fumes are drawn downward and back to be Exhausted by way of the exhaust stack and through an exhaust collar.
- A standard 1-inch raised front lip prevents any spillage out through the front of the station.
- Incorporated is a fluorescent light fixture, in a fume tight enclosure with all plastic hardware that illuminates the entire worktop.
- The building exhaust system draws room air in through top located 90% pleated pre-filters, into its positive plenum, showering clean air over the worktop.
- Configured for 120 VAC, 60 Hz
- Interior dimensions: 37 inches wide x 28 5/8 inches deep x 48 inches high.
- Exterior dimensions: 38 inches wide x 30 inches deep x 57 inches high (at customer's request)
- Shipped assembled, fully tested and ready to use.

**Work deck upgrade to 400-pound load capacity for the above hood****Stand with Adjustable legs for the above hood**

- 1½" x 1½" structural steel all enamel powder coated as one weldment.
- Adjustable Legs at 1.5" increments supplied with adjustable polypropylene levelers.
- Adjusts from 32" to 38" in height

****CP7-D Polypropylene –The process of making the polypropylene flame retardant reduces its ability to resist chemicals—wipe spills immediately****Polypropylene FR - Flametec™ CP7-D -FM 4910**

Flametec™ CP7-D is a proprietary designation for a flame retardant polypropylene formulation. CP7-D represent our version of polypropylene sheet whose flame retardant characteristics meet or exceed the most rigorous FMRC 4910 testing standards for most aspects of flame retardation, self-extinguishing characteristics and burnthrough. In addition, CP7-D also meets or exceeds test standards for low smoke generation and minimal toxic by-products. CP7-D is a filled PP sheet material, therefore, chemical compatibility should be verified for each application.

FEATURES AND BENEFITS**Flametec CP7-D Offers:**

- Impact Strength - Flexibility and strength of designs vs. other FRPP products.
- Weldability - Easy to fabricate with conventional welding equipment.
- Economics - An economical alternative for fire safe construction.
- Fire Safe - Listed in accordance to FMRC 4910, fire safe materials for clean room construction.
- Extruded Sheet - Offers the best gauge consistency, surface and tolerances.