

## SPINCOATERS

# Model 100 Spinner

The Cee® Model 100 high precision spinner is fully programmable and user friendly. It features accuracy and repeatability which eliminates processing variability from critical experiments. The convenient bench-top design allows for this unit to be portable and easy to use.

### SPECIFICATIONS

Spin Range: 0-6,000 rpm

Acceleration: 0-30,000  
rpm/sec. unloaded

Time: 0-999 sec/step

Prog. Steps: 10 steps/  
program

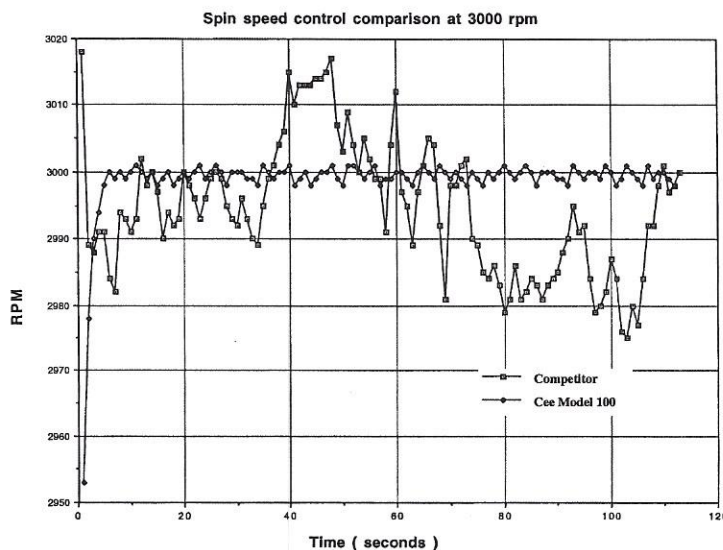
Repeatability:  $\pm 5$  rpm

Resolution: 1 rpm

Max. Plate Size: 200mm  
round or 6" square

Options:

- Auto Dispense
- Back Side Rinse
- Centering Device
- Captive Spin Chuck
- Programmable Exhaust



*Cost Effective Equipment*  
A Division of Brewer Science, Inc.

2401 Brewer Drive • Rolla, Missouri 65401  
(573) 364-0300 • Fax: (573) 364-9513  
[www.brewerscience.com/cee](http://www.brewerscience.com/cee)

## PROGRAMMABILITY

- Ten user process programs stored in battery backed memory
- Ten discrete process steps
- Acceleration from 0-30,000 rpm/sec in 1 rpm/sec increments
- Step time from 0 to 999 seconds in 1 second increments

## PRECISION

- All digital motor control system
- Accuracy better than  $\pm 1$  rpm and repeatability within  $\pm 5$  rpm
- Reproducible results, substrate after substrate, day after day and year after year

## RELIABILITY

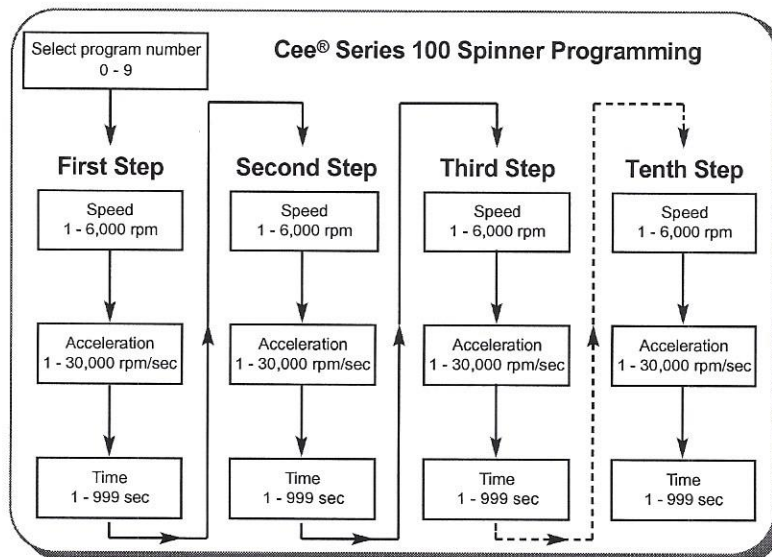
- Indirect drive systems protect the motor from accidental contact with process chemicals, cleaners, etc.
- Extremely high reliability and up-time

## BOWL DESIGN

- Constructed from stainless steel
- Optional polyethylene liners available
- Drain and exhaust ports located in the bottom of the bowl
- Capable of processing up to 200mm round and 6" square substrates

## UPWARD COMPATIBILITY

- Processes and parameters are fully compatible with Cee® Automated systems.



## DIMENSIONS

- Machine Weight: 40 lbs.
- Shipping Weight: 105 lbs.
- Cabinet Dimensions:  
24" L x 13" W x 13" H

## UTILITIES

- Power Requirements  
115 Volts AC  
800 Watts
- Drain Port: 3/4" OD
- Exhaust Port: 1" OD
- Recommended Utilities  
Vacuum: 25" Hg  
Exhaust: 50 cfm @ .2" wg
- Auto-Dispense Requirements  
N<sub>2</sub> or CDA: 70 psi



2401 Brewer Drive • Rolla, Missouri 65401  
(573) 364-0300 • Fax: (573) 364-9513  
[www.brewerscience.com/cee](http://www.brewerscience.com/cee)



## OPTIONS

# Auto-Dispense Option

Cee® has developed four options for automatic dispense of substrate coating materials.

Any of Cee®'s Auto-Dispense options are available on Models 100, 3000, 4000 and 6000 series. Up to 4 dispense systems can be added each system.

Cee® can also interface with most industry dispense pumps and control systems.



### OTHER OPTIONS:

- BSR
- EBR
- Bowl Rinse

### AUTO-DISPENSE OPTION COMPARISON

	<b>Syringe</b> <30ml or 50ml	<b>Cartridge</b> <360ml	<b>Pressure Can</b> Different Sizes 1 gallon standard	<b>Pump</b> li/gal.
Volume				
Drive	Pneumatic	Pneumatic	Pneumatic	Pump
Suckback	Yes	Yes	Yes	Yes
Programmability	Yes	Yes	Yes	Yes
Material Usage	Small	Medium	Med./Large	Med./Large



2401 Brewer Drive • Rolla, Missouri 65401  
(573) 364-0300 • Fax: (573) 364-9513  
[www.brewerscience.com/cee](http://www.brewerscience.com/cee)

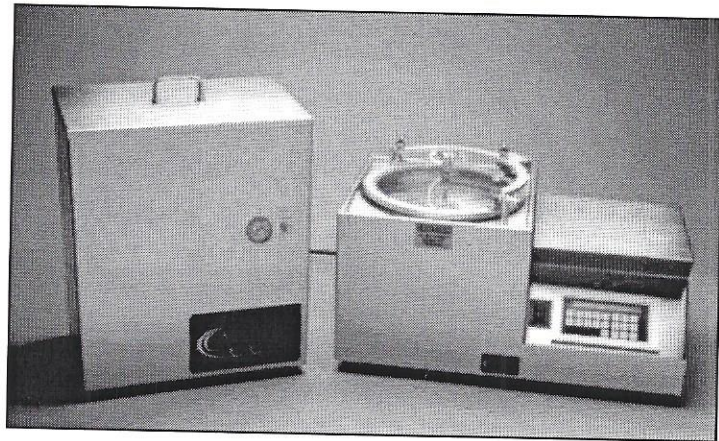


## Pump Dispense Option

### MILLIPORE™ PUMP

#### Features:

- Draws resin material directly from bottle. No reservoirs to fill or clean.
- Waferguard® Teflon Pump—Sophisticated pump has no moving parts and incorporates a 16 stack 0.2µm filter.
- Programmable Suckback System—Eliminates dripping from the dispense nozzles.
- Standard pump supports fluid viscosities of up to 400cps and volumes from 0.5-25mL (optional: High Viscosity 400cps-13,000cps).



This dispense option combines the popular Waferguard® pump system with the programmability and ease of use of the Cee® Spin/coater line.

The pump is located in a separate cabinet designed to sit on the floor under the machine or in a

utility chase. The pump cabinet can be exhausted and provides a tilt-base bottle support to allow operation to near the last drop of bottles up to 1-gallon size.

All operation is programmable, including pump suckback and refill parameters. All power to

the dispense cabinet is pneumatic and there is no electricity used in the cabinet, thus eliminating possible safety hazards.

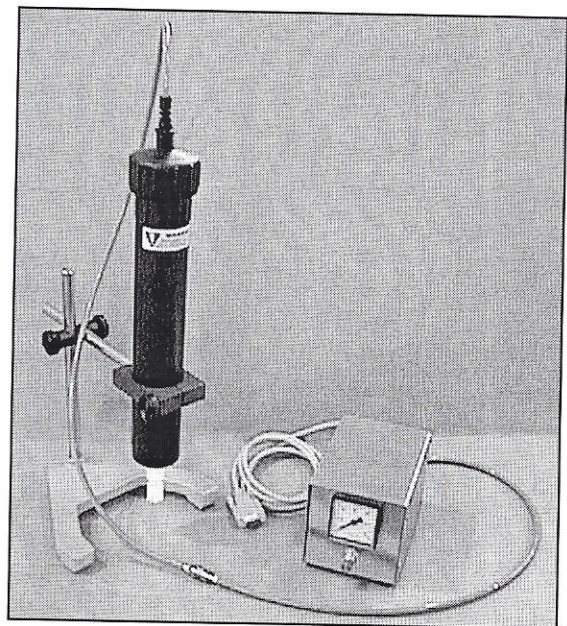
Connections are made to the spinner itself so there are no additional utilities needed.

## Cartridge Dispense Option

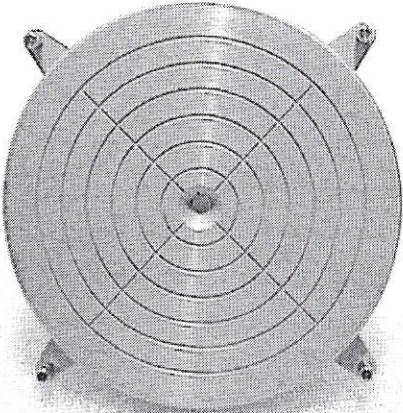
#### Features:

- Medium—Up to 360mL can be loaded into a single cartridge. For higher use materials, this reduces the preparation time needed for operation.
- Disposable Reservoir—With the cartridge system, the reservoir itself is disposable. If desired, it can also be cleaned and reused. To provide repeatable control of the dispense process with the larger volume of the cartridge, separate dispense control valves are employed. These components must be cleaned and/or purged when changing dispense fluids.
- Adjustable Suckback—The sophisticated dispense control valve allows adjustment of the suckback stroke at the end of the dispense cycle.

As with the syringe system, the cartridge dispense assembly is self-contained. The cartridges are mounted on a rack near the spin bowl. A separate assembly of dispense nozzles are attached to the spin bowl exhaust lid.



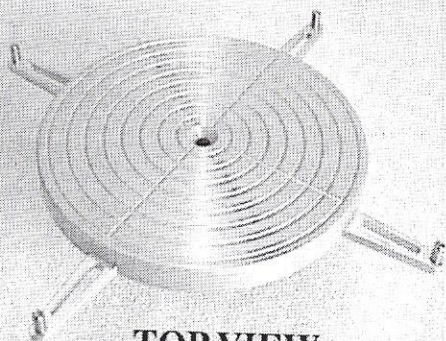
# 4.0" Square Chuck



TOP VIEW



# 6.0" Square Chuck



TOP VIEW