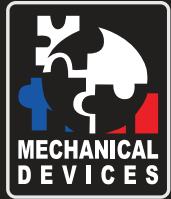


Flex TC[®] Economical - Thermal Forcing System. Compact, Precise & Reliable.



Flex TC Bench-top

-55°C - 155°C
-32°C @ 20W



Flex TC's advanced thermal head simulates exceptional temperature environments on the IC device.

The pneumatically driven thermal head makes direct contact with the IC device, providing great power handling and precise temperature control.

With state of the art design and technology, MD units stimulate the DUT to the desired temperature precisely and consistently via direct contact with a thermal head's tip.

MD thermal control units were designed with high efficiency and flexibility in mind, allowing for:

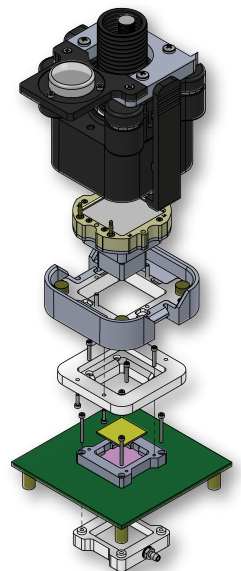
- Customization to suit different package and interface variations.
- Thermal forcing across a wide range of device sizes and types, whether socketed or soldered to the board.

Available Options:

- Clip-on actuator
- Manual actuator
- Toggle clamp
- Boom stand
- Enclosures
- Customized fixtures

Applications:

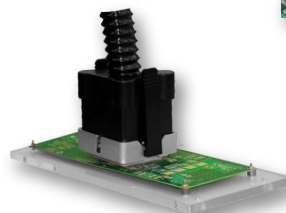
- ATE, SLT and bench
- High reliability testing
- Thermal stream/chamber/chiller replacement
- OEM integrations



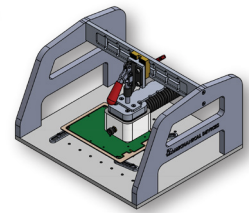
Right angle actuator head

Features:

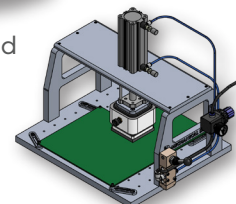
- Temperature range -55°C to +155°C
- Cooling power -40°C @ 21W (T_c)
- Temperature stability 0.2°C
- T_j and T_c control
- Self-contained liquid free operation
- Quiet, compact and portable
- Adapt to most packages and sockets
- Condensation FREE
- Maintenance FREE
- Remotely controlled via an ethernet
- Fully programmable for automation
- Environmentally friendly operation



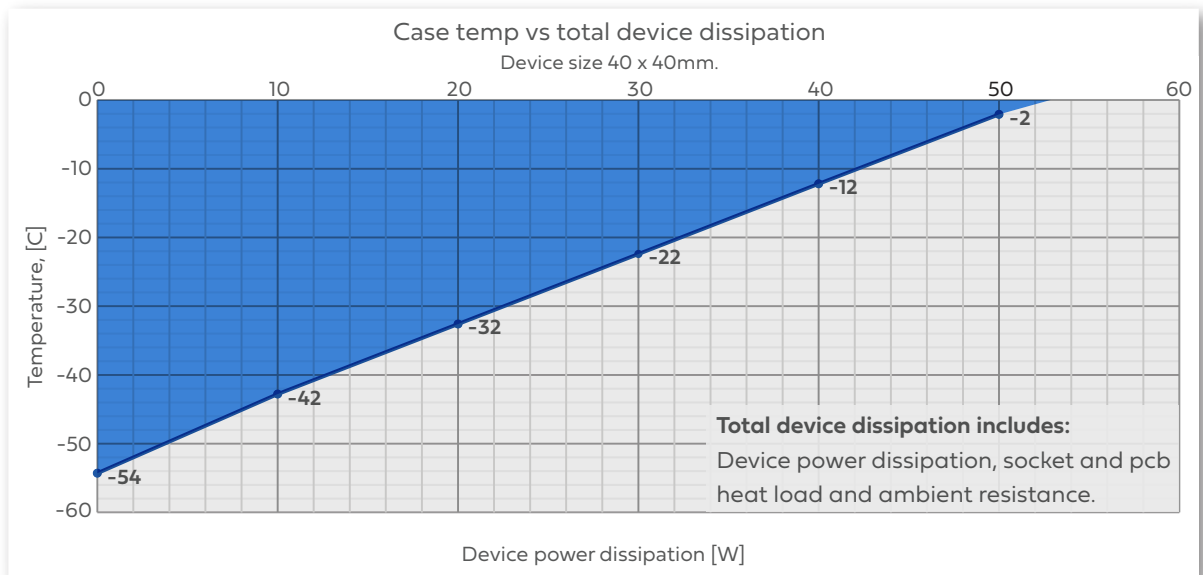
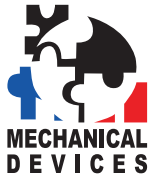
Axial actuator head



Toggle clamp unit



Manual actuator



System Specifications:

Operating

Temperature range	-55°C to +155°C
Temperature accuracy	±0.2°C
Transition rates	Up to 50°C/min
Temperature sensor types	PT100 thermistor K-type thermocouple
Actuation type	Pneumatic clip-on actuator
Actuation force	Up to 70 Kg

Facilities

Power	100V-240V AC 50/60Hz, 6A max
CDA	<0.5cfm @ 90PSI -55°C dew point
Operating temperature	-10°C to 30°C
Plug	C14

Mechanical Data

System size (WxHxL)	320mm x 220mm x 420mm
System weight	22 Kg
Thermal head (mm)	73 x 43 x 73
Controller to TH distance	~2 meter (6.5ft)

Data Communication

Ethernet TCP/IP	RJ-45
USB	Type B
Touch screen display	7" LCD

