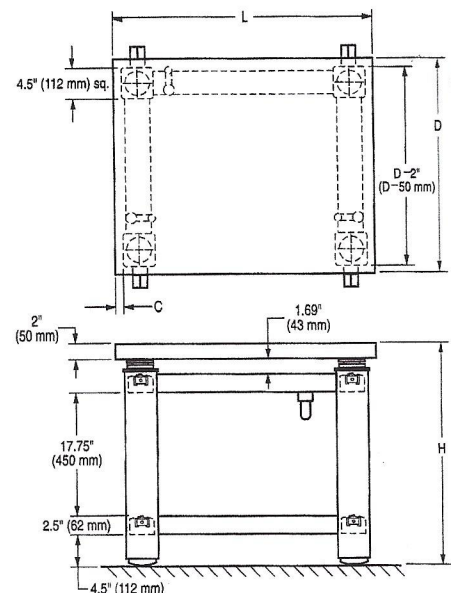


63-600 SERIES

ClassOne Workstations



The all stainless steel TMC ClassOne Workstation is a high-performance, pneumatic vibration isolation table designed from the floor up for maximum cleanroom compatibility. Isolation is provided by the same Gimbal Piston element that provides unsurpassed performance in isolating optical tables, electron microscopes, precision balances, and scanning-tunneling microscopes.

The standard table top is a highly damped, stainless steel laminate with a powder-coated underside. We now also offer a version of our top made with electropolished stainless steel top, side, and bottom surfaces.

Designed to be easily cleaned, the table has no dust-collecting grooves or ledges. All horizontal surfaces are crowned. In addition, the glossy,

smooth, electropolished stainless steel surface shows any contaminants.

The elimination of weld beads allows for easy wipe-down.

There are no outgassing components. All air used to support the table is appropriately vented.

The ClassOne Workstation is alcohol-wiped with a lint-free cloth and is double-wrapped in plastic at the factory prior to shipping.

How to Order

The basic table includes a front support bar. Options include shelves, rear support bar (required to mount shelves) and casters. The shelves include a pattern of 0.4 in. (10 mm) holes on 1 in. centers. The accessories available with the 63-600 Series ClassOne Workstation are specified separately.

GENERAL SPECIFICATIONS

Isolator natural frequency:

High Input Specifications

Vertical natural frequency 1.0 Hz

Horizontal natural frequency 1.2 Hz

Low Input Specifications

Vertical natural frequency 1.5-1.9 Hz

Horizontal natural frequency 1.7-2.2 Hz

Isolation efficiency @ 5 Hz:

Vertical: 60-95%

Horizontal: 30-80%

Isolation efficiency @ 10 Hz:

Vertical: 80-97%

Horizontal: 60-94%

Gross load capacity:

1,400 lbs (640 kg) at 80 psi

Net load capacity:

350 lbs (160 kg)

Finish: Electropolished stainless steel frame, stainless steel top (with or without electropolish)

Facilities required:

80 psi nitrogen or air

Table Ordering Chart

Table Model		L	D	H	C
Complete Table and Armrest with Stainless Steel Top	Complete Table and Armrest with Electropolished Stainless Steel Top				
63-631	63-635	35" (875 mm)	30" (750 mm)	30" (750 mm)	1/2" (13 mm)
63-641	63-645	47" (1175 mm)	30" (750 mm)	30" (750 mm)	6 1/2" (163 mm)
63-661	63-665	47" (1175 mm)	36" (900 mm)	30" (750 mm)	2" (50 mm)
63-671	63-675	60" (1500 mm)	36" (900 mm)	30" (750 mm)	8 1/2" (213 mm)
Accessory Model	Description				
81-302-05	Rear support bar & mounting clamps	35" (875 mm)			
81-302-06	Rear support bar & mounting clamps	47" (1175 mm)			
81-302-07	Rear support bar & mounting clamps	60" (1500 mm)			