

Equipment List: Exhibit AItem #

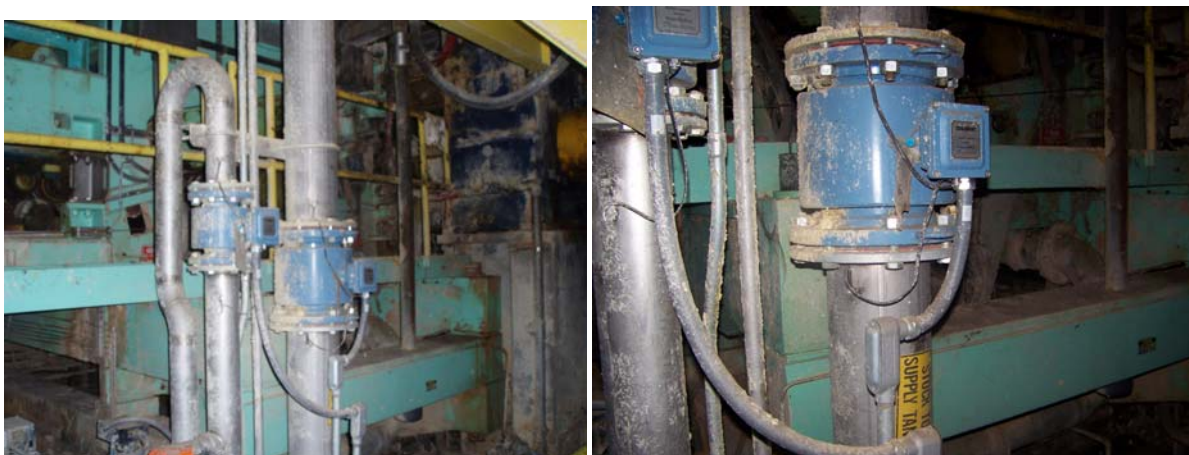
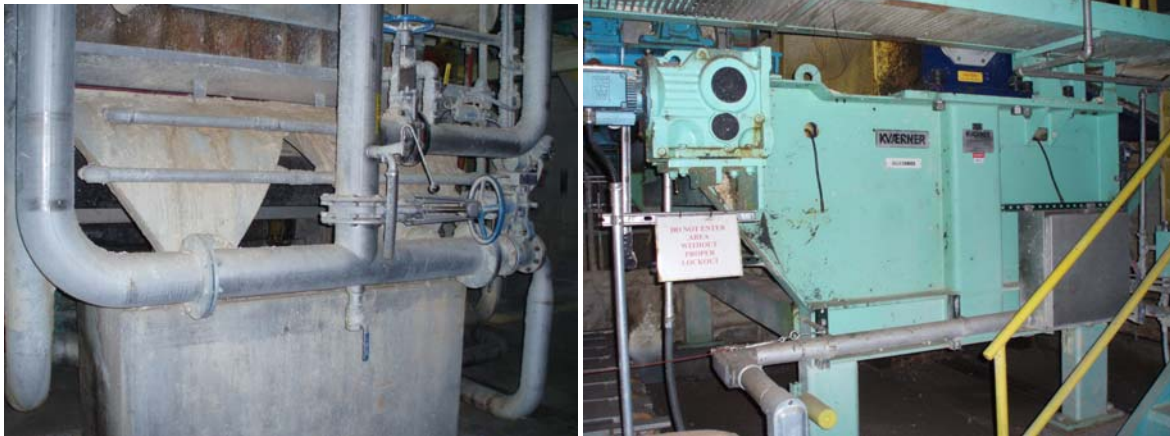
1. Kvaerner/ Hymac, Andritz rebuilt Wet Lap Machine, with pneumatic control panel & instrumentation tubing, switches & components that are with the machine.
2. Blower & ducting for vacuum transfer system above stacker
3. Drive motors & reducers for the driven sections of the Wet Lap Machine
4. Pumps & Agitator at White Water Chest & Pulper
5. Stock flow control valves and flow meters
6. U-tube piping and stock supply to headbox piping
7. Hydraulic system
8. Hood, Ducts & Roof Fan
9. Monorails and Chain Hoists
10. Spare rolls & fabrics
11. 480v Motor Control Centers: MCC 79SB1-1 Sections 1 through 12
12. PLC racks (1 thru 6, in 3 cabinets) & power supply cabinet
13. PLC Program
14. VFD Drive Isolation transformer & PF correction capacitor for Wet Lap
15. Variable Frequency Drive Control Center for Wet Lap
16. 480V switches mounted on wall across from the machine
17. 480V lighting switches mounted on drive side of machine
18. Scale on & off machine
19. Bale marking equipment
20. Air receiver tank
21. Documentation (upon sale agreement) - hardcopy and electronic (if available)

Disassembly, marking/tagging & storage

- Disassembly of the Wet Lap Machine keeping instrumentation intact as much as possible.
- Work with our representative to document and tag equipment.
- Storage of equipment - details to be worked out.

See attached representative pictures for additional clarification.

Item 1: Wet Lap Machine with control panel, instrumentation ... etc. several representative pictures



Item 2: Blower & Duct for vacuum transfer system



Item 3: Drive motors and Reducers for Wet Lap Machine



Item 4: Pumps & Agitator at White Water Chest & Pulper



Item 5: Stock flow control valves and flow meters



Item 6: U-tube piping and stock supply to headbox piping



Item 7: Hydraulic system



Item 8: Hood, Ducts & Roof Fan



Item 9: Monorails and Chain Hoists



Item 10: Spare rolls & fabrics



Item 11: 480v Motor Control Centers: MCC 79SB1-1 Sections 1 through 12



Item 12: PLC racks (1 thru 6, in 3 cabinets) & power supply cabinet

Rack 1,2 &3

Rack 4&5



Rack 6

Power supply cabinet



Item 13: PLC Program.. no picture

Item 14: VFD Drive Isolation transformer & PF correction capacitor for Wet Lap
Drive Isolation Transformer

PF Correction Caps



Item 15: Variable Frequency Drive Control Center for Wet Lap



Item 16: 480V switches mounted on wall across from the machine



Item 17: 480V lighting switches mounted on drive side of machine



Item 18: Scale on & off machine



Item 19: Bale marking equipment



Item 20: Air receiver tank



Item 21: Documentation: no picture