

Pump Number	Pump Size	Test/Serial Number	Equipment Number	Service/ Application	Rated	Comments
3	CL-2002	89T4396	587	#1 PM K-Press Touch Roll	80-85%	Position 1, right side drive end discharge, driven by a Reliance motor 100 hp, 1785 rpm

This pump was repaired by ECM in October of 2013. The body and cones are stainless steel clad. The body is equipped with lobe purge tubing. The rotor shrouds have been stainless steel rung. The rotor taper clearances are excessive at the tip and the tapers are slightly worn and eroded. Monitor wear with future visits.



Drive end Rotor shroud clearance is good



Drive end rotor taper slightly worn eroded.



Drive end rotor taper clearance is good.



Idle end Rotor shroud clearance is good.



Idle end rotor taper slightly worn eroded.



Idle end rotor taper clearance is good.

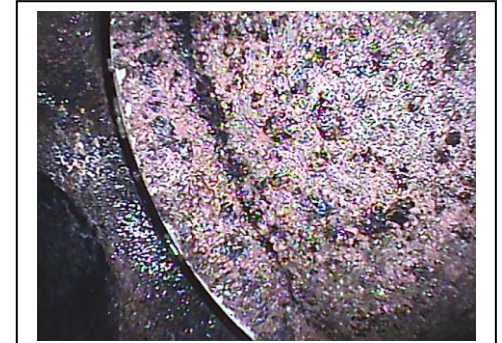
Pump Number	Pump Size	Test/Serial Number	Equipment Number	Service/ Application	Rated	Comments
3 continued						



Outer Drive end Rotor Blades in good condition.



Outer Idle end Rotor Blades in good condition.



Drive end rotor taper clearance at the small diameter is excessive.



Idle end rotor taper clearance at the small diameter is very excessive.