



**GLOBEPACK**  
EQUIPMENT



• • • • •

# NORDEN 700 REFURBISHMENT PROCESS

Step by Step





# Machine Arrival – Strip and Clean

## MACHINE AUDIT, STRIP DOWN & INITIAL CLEANING

Before any work begins, the Norden 700 undergoes a detailed audit by our engineering team. Each component is assessed for wear, function, and potential upgrade opportunities. This audit allows us to build a clear refurbishment plan tailored to the specific condition of the machine.



1

### Top Half Disassembly:

- Strip-down of the top section
- Orientation, cleaning, heat, sealing, trimming, and eject stations dismantled and inspected



2

### Bottom Half Disassembly:

- Strip-down of the lower frame
- Both structural columns removed
- Filling column dismantled, cleaned, and inspected
- Sealing column dismantled and assessed for wear
- Main camshaft removed, cleaned, and inspected



3

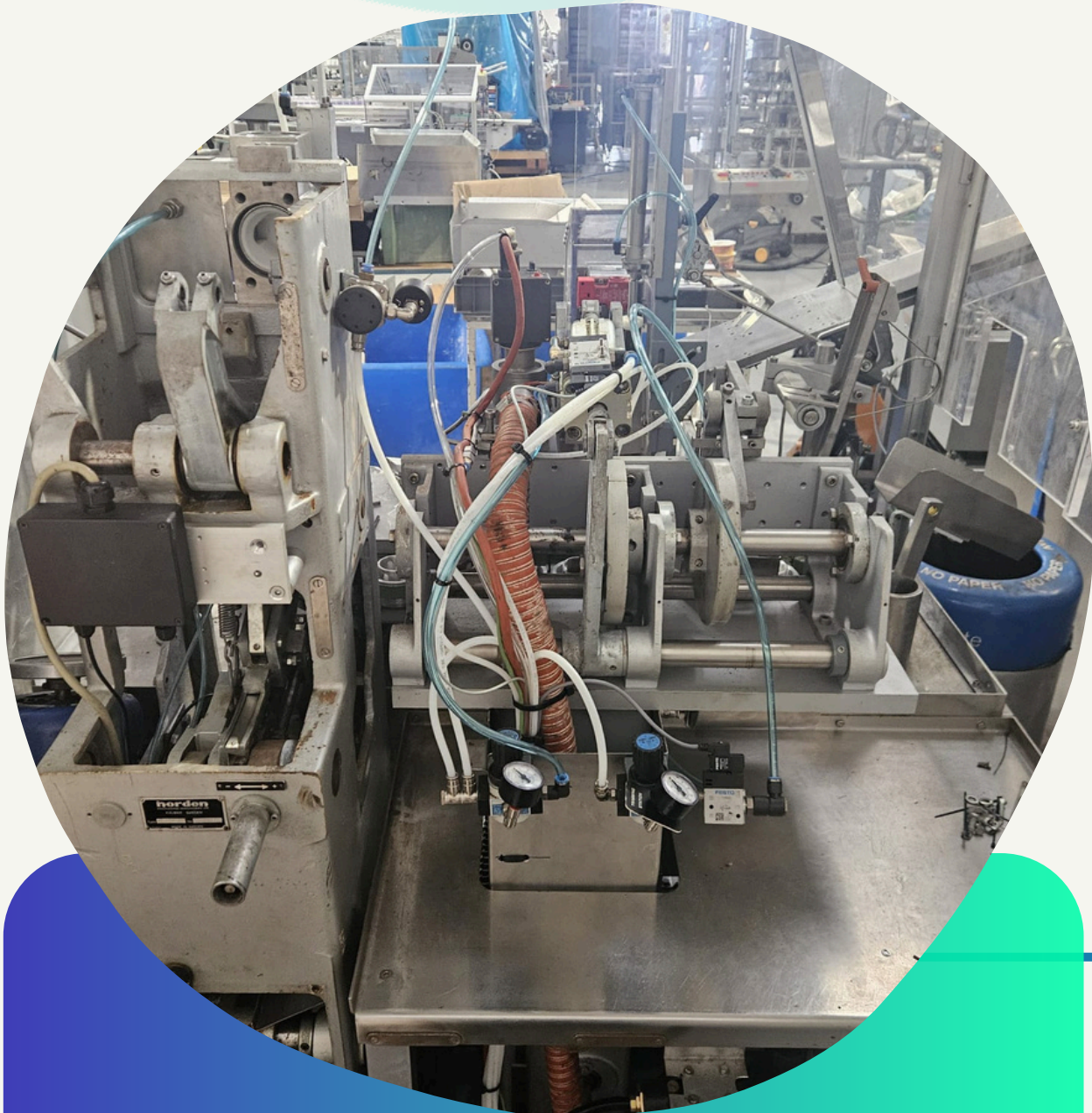
### Cleaning and Surface Restoration:

- Intensive degreasing and debris removal
- Painting and refinishing of the bottom half frame
- Top half is also thoroughly cleaned



# Mechanical Rebuild

With components cleaned and assessed, the mechanical rebuild of the Norden 700 begins in two main phases:



## Top Half Rebuild

- Tube holder conveyor rebuilt with new bearings
- Trimming, sealing, and heating stations rebuilt and refitted to sealing column
- Filling head rebuilt and refitted to filling column
- Orientation station rebuilt with new bearings and belts
- Tube cleaning and eject stations rebuilt and refitted
- Infeed station rebuilt with new bushes and remanufactured parts

4

## Bottom Half Rebuild

- Main camshaft and belt drive refitted with new bearings
- Sealing and filling columns rebuilt with new bushes and bearings
- Vacuum pumps rebuilt with new seals and bearings
- Cam followers replaced with new bushes
- New chain drive, air handlers, and water fittings installed
- Entire bottom half fully restored

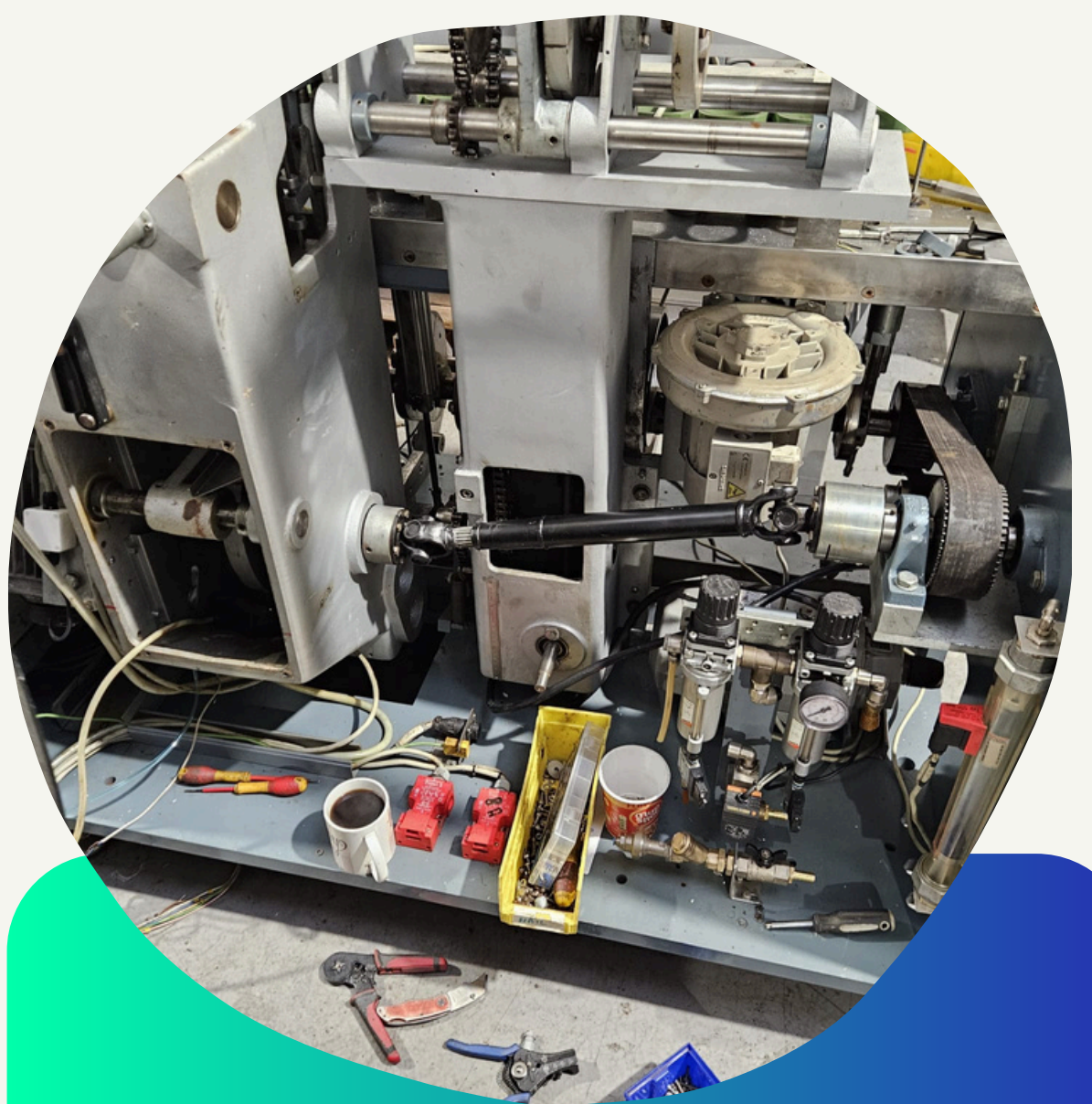
5

6



## Final Mechanical Details

- Pneumatic pipework and water lines completely renewed
- All Perspex safety guards and stainless steel guards refitted
- Mechanical refurbishment completed in full





# Electrical Work

Electrical systems are modernised to ensure long-term reliability, efficiency, and operator safety. Our electrical refurbishment process follows strict standards and includes detailed inspections, component upgrades, and reconfiguration for optimal performance.



## Rewiring & Integration

- The machine is then fully rewired using modern cable management systems and new aluminium connection boxes, improving both safety and accessibility.
- Our engineers ensure seamless integration with mechanical and pneumatic systems, verifying connections between sensors, actuators, and drives.

7



## Electrical Fault Finding

- The main control panel is carefully dismantled, cleaned, and inspected for wear, corrosion, and outdated components.
- All electrical cables, connectors, and components are tested for integrity and replaced where necessary.

8



## Electrical Testing

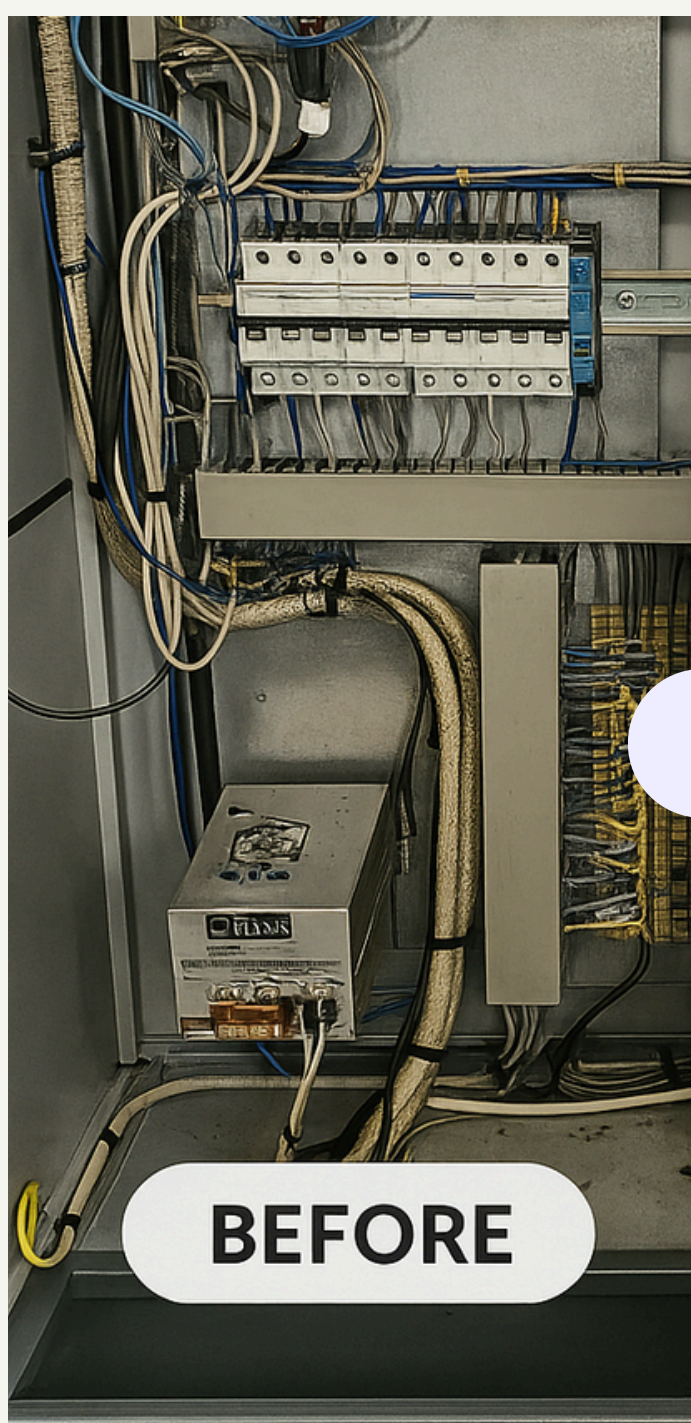
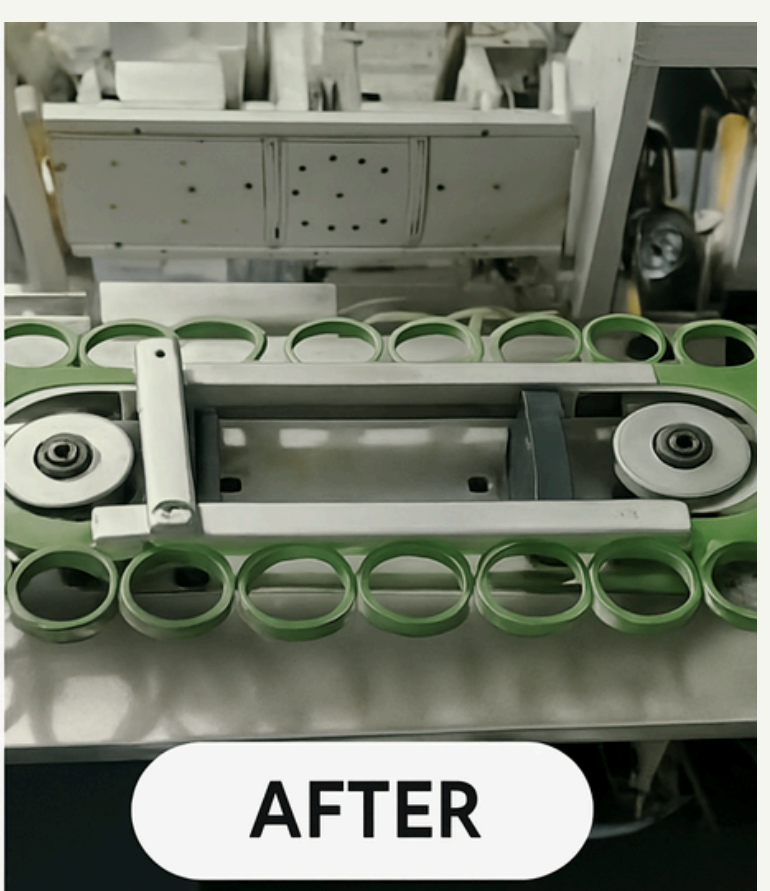
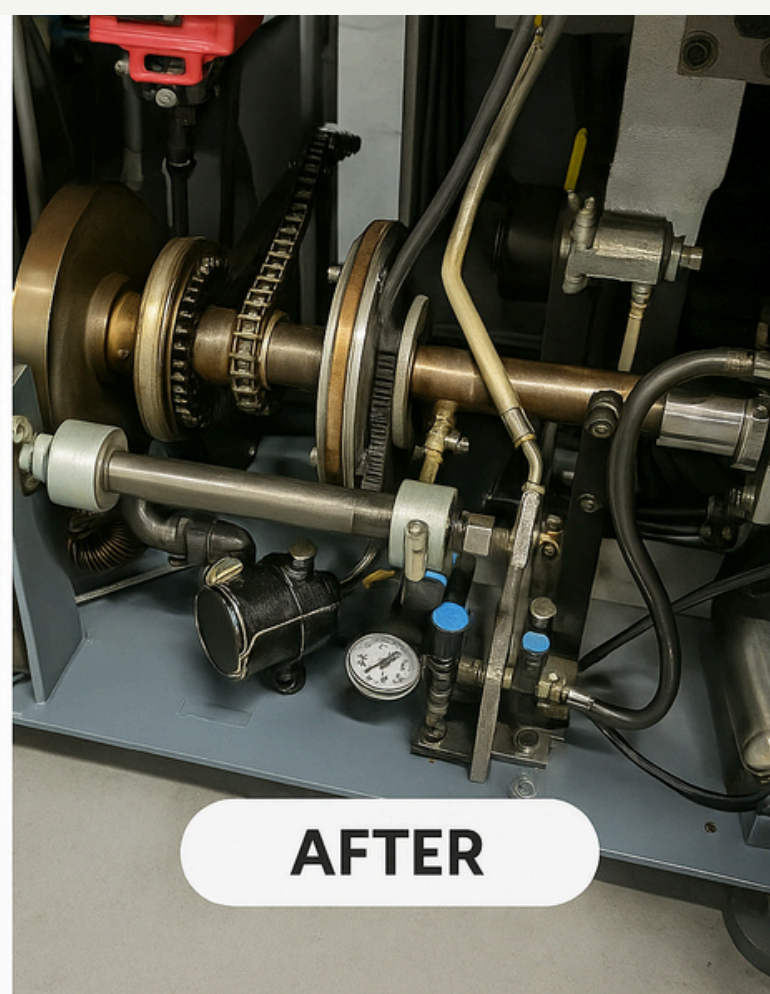
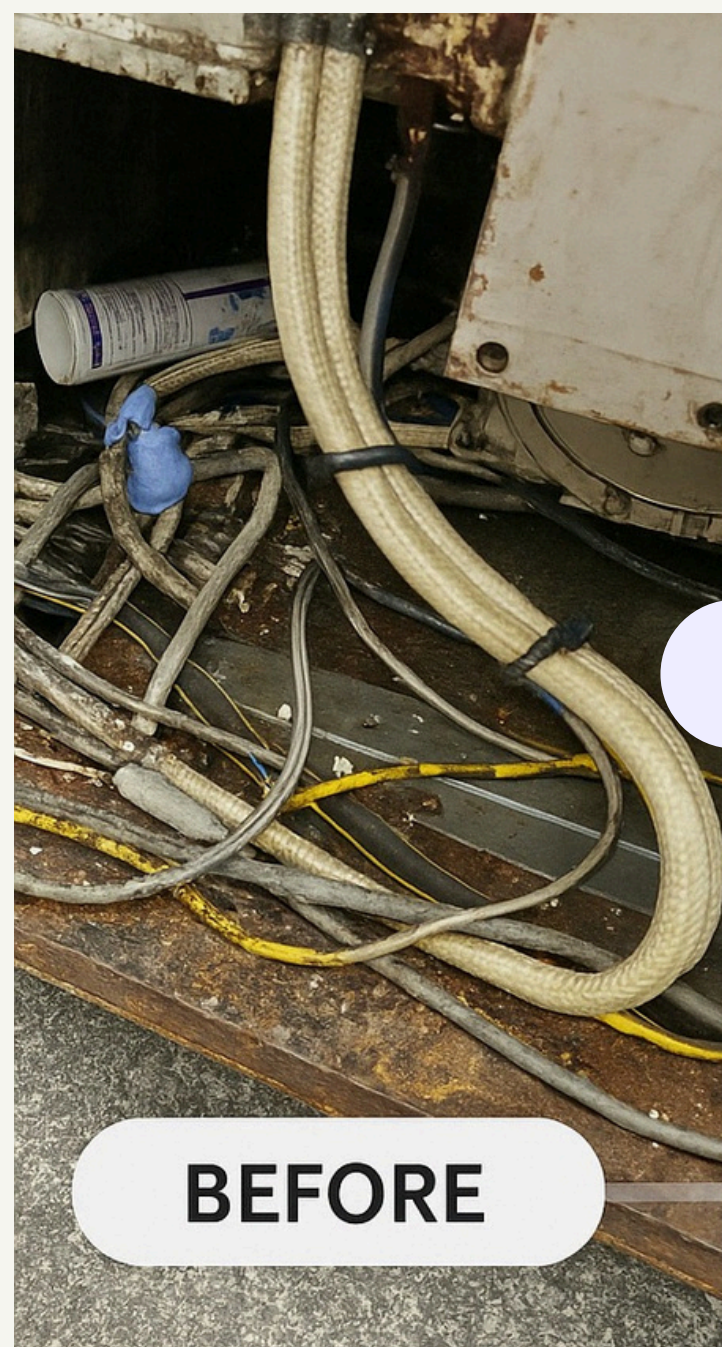
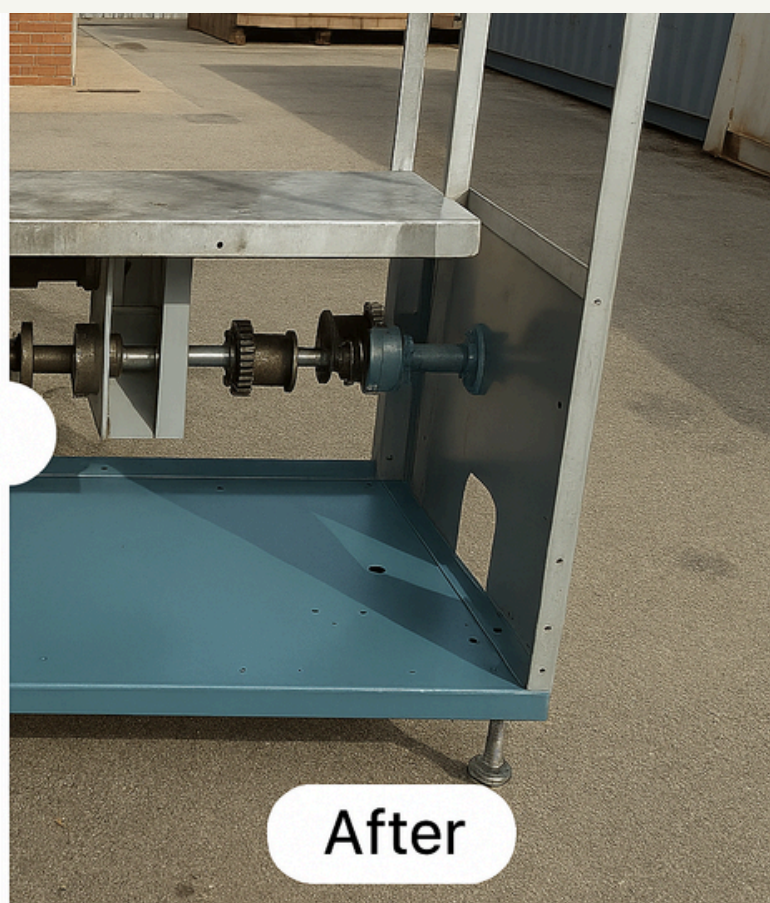
- Once rewiring is complete, the system undergoes final testing, including continuity checks, fault diagnostics, and safety verification to ensure every component operates flawlessly.



# Completion

10

- ✓ Mechanical and Electrical refurbishment complete:
- ✓ Rigorous testing and final inspection carried out
- ✓ All stations checked for functionality and alignment
- ✓ Machine polished and prepared for dispatch
- ✓ The Norden 700 is now fully refurbished, compliant, and production-ready.





INTEGRITY  
COLLABORATION  
INNOVATION  
POSITIVITY  
LOYALTY



Unit 8 Ripley Close, Normanton Industrial Estate, Normanton  
West Yorkshire, United Kingdom, WF6 1TB  
+44 (0)1344 891379  
service@globepackequipment.com  
[www.GLOBEPACKEQUIPMENT.COM](http://www.GLOBEPACKEQUIPMENT.COM)