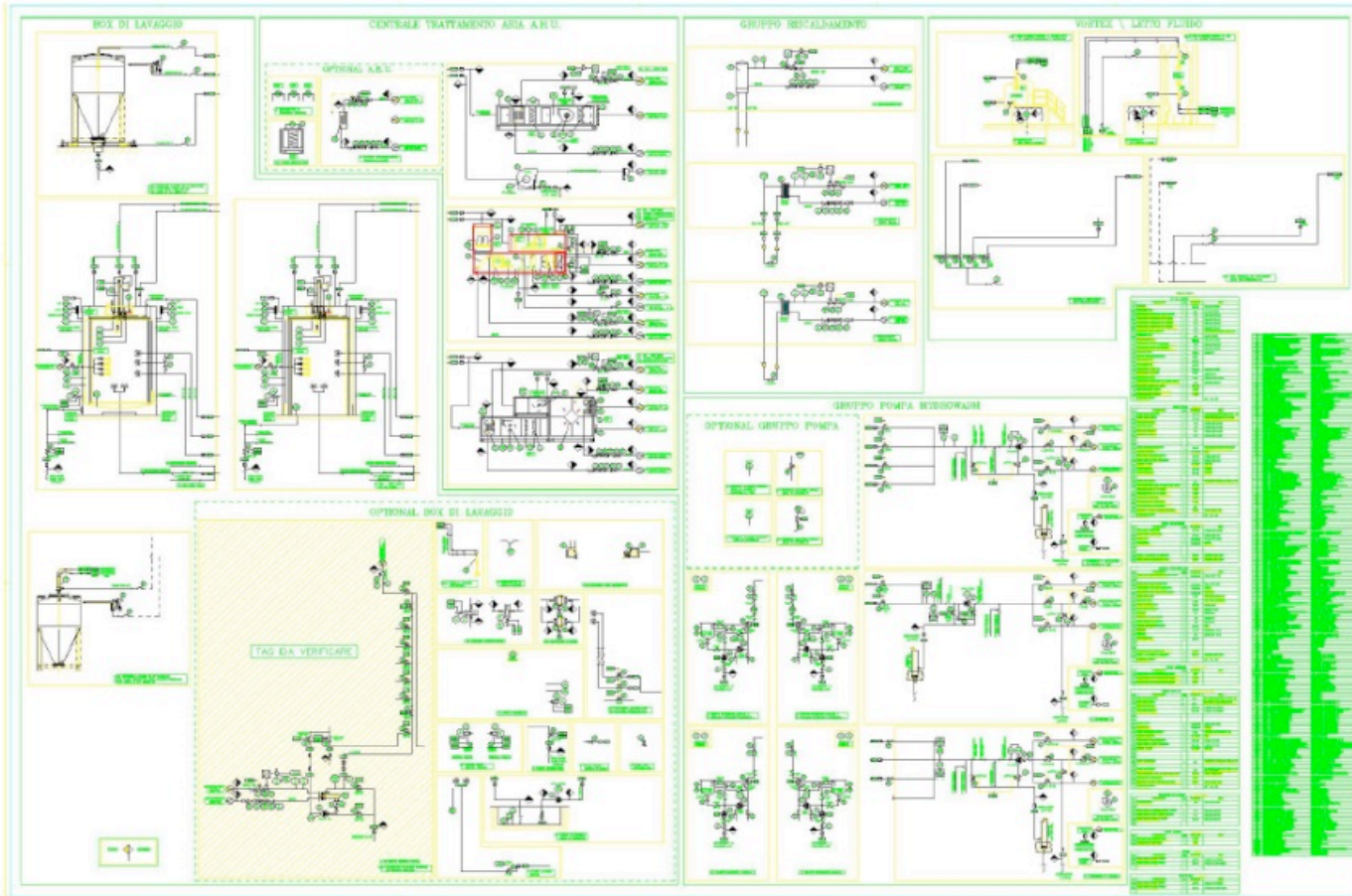


PHARMA HYDRO SYSTEM

Modular Washing Systems

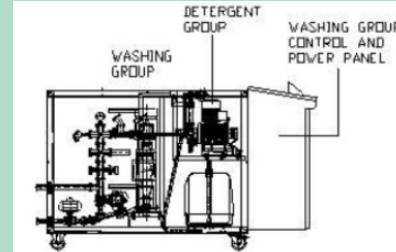


MODULAR WASHING SYSTEMS



MOBILE OR FIXED TYPE PUMP GROUPS

- 2 or 3 Different types of water for washing;
- Up to 3 types of detergents;
- Setting % of detergent;
- Low or high pressure;
- Water heating by steam or electric;
- Control of the temperature, pressure & flow;
- Multiple exits for the water ;
- Control by Siemens or Allen Bradley technologies.



SEMI – AUTOMATIC STATIONS

- Modular systems according to requirements;
- Modular automation level;
- Hydrokinetic washing nozzles for the internal part of Bins;
- External washing by manual lance.
- Washing water to be wasted or re-circulated



OTHER STAND- ALONE SOLUTIONS

- Lifting/lowering of the washing head by means of lifting column;
- Dedicated Bin parking stations in washing area, with washing and drying heads wall type;



COMPLETELY AUTOMATIC WASHING CABINS

- Mono block structure in AISI 316
- Single or double door.
- Double cabin1 for washing and the other for drying
- Washing ramps along the side of the main body.
- Discharge of washing water 4'' with possible re-circualtion system

Sliding doors



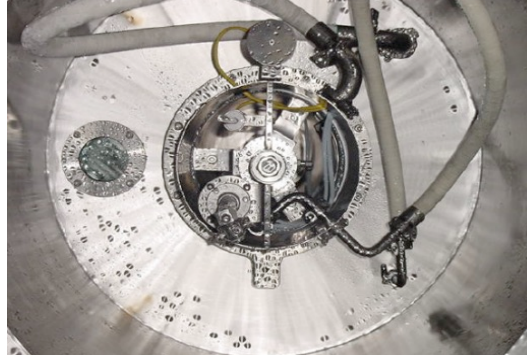
AUTOMATIC STATIONS

- Internal part completely mirror polished, for the complete evacuation of the washing water.
- Possibility of washing various types of Bins and accessories with dedicated racks.



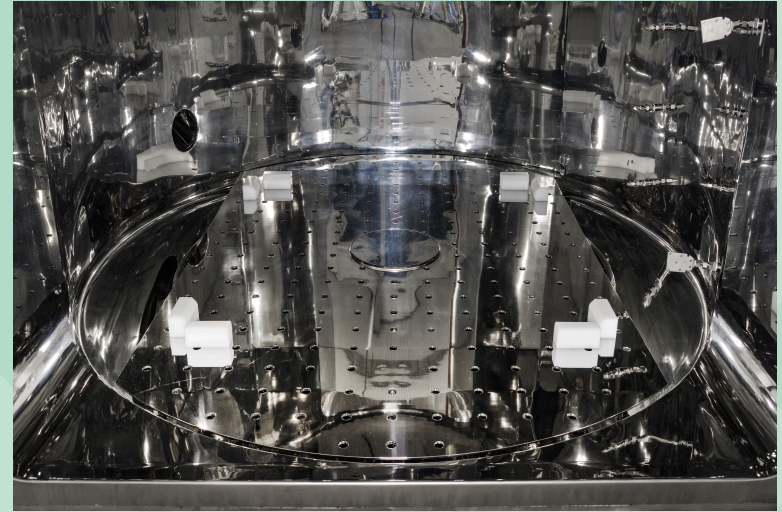
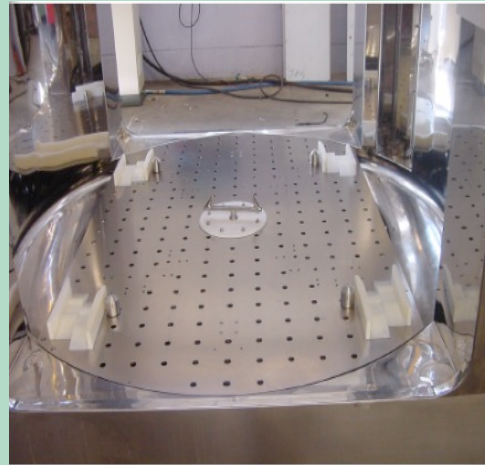
INTERNAL WASHING GROUP

- Telescopic upper pipe for the raising lowering of the rotating head;
- Conveying of Hot air for drying.
- Lid presence and Bin height sensors



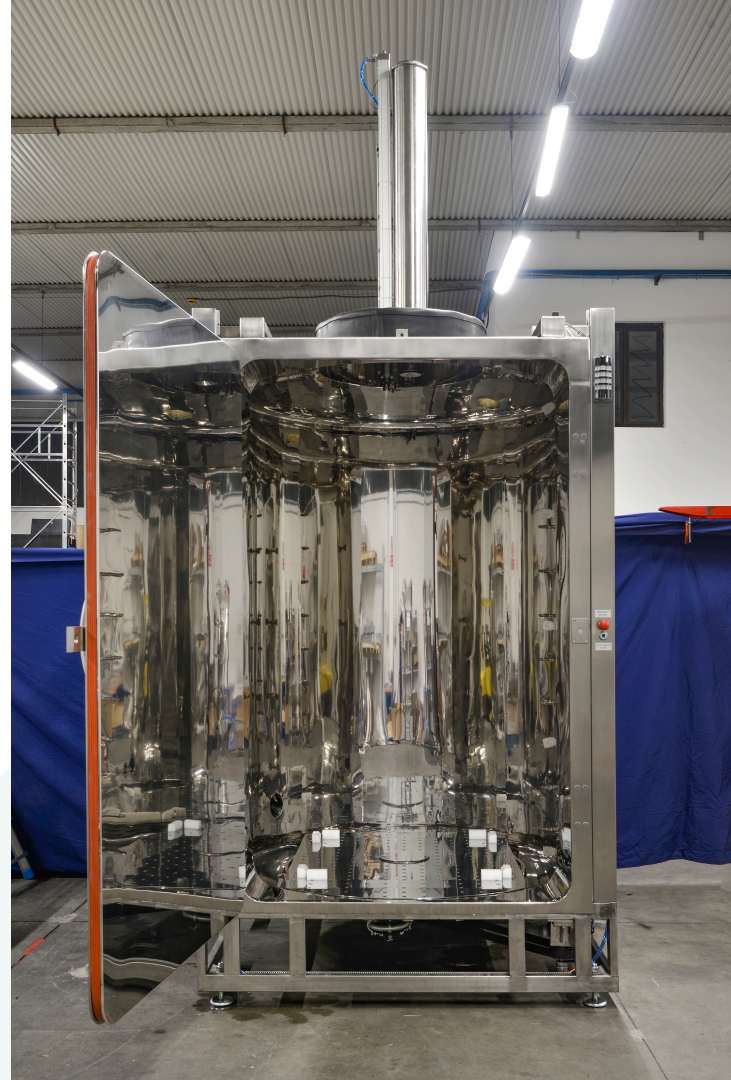
ROTATING PLATFORM FOR EXTERNAL WASHING

- Rotating platform for full coverage of Bins.
- Dedicated nozzles for washing the bottom butterfly valve.
- Bin positioning guides for wheels or static feet.



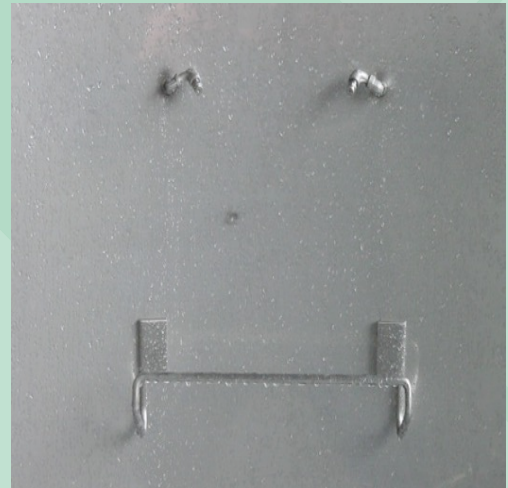
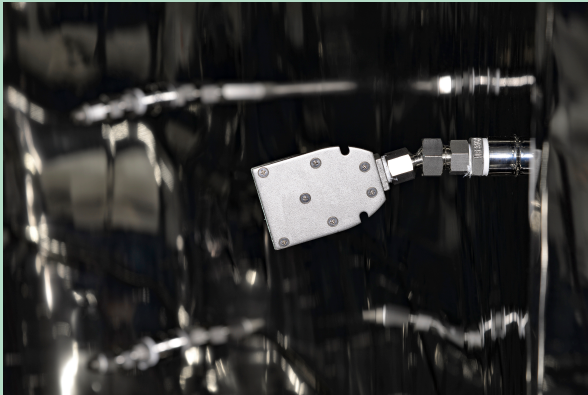
INTERNAL CABIN

- Cylindrical geemteric Box;
- 2B or compeltely mirror polished surfaces;
- Emergency push button internally;



ADJUSTABLE NOZZLES

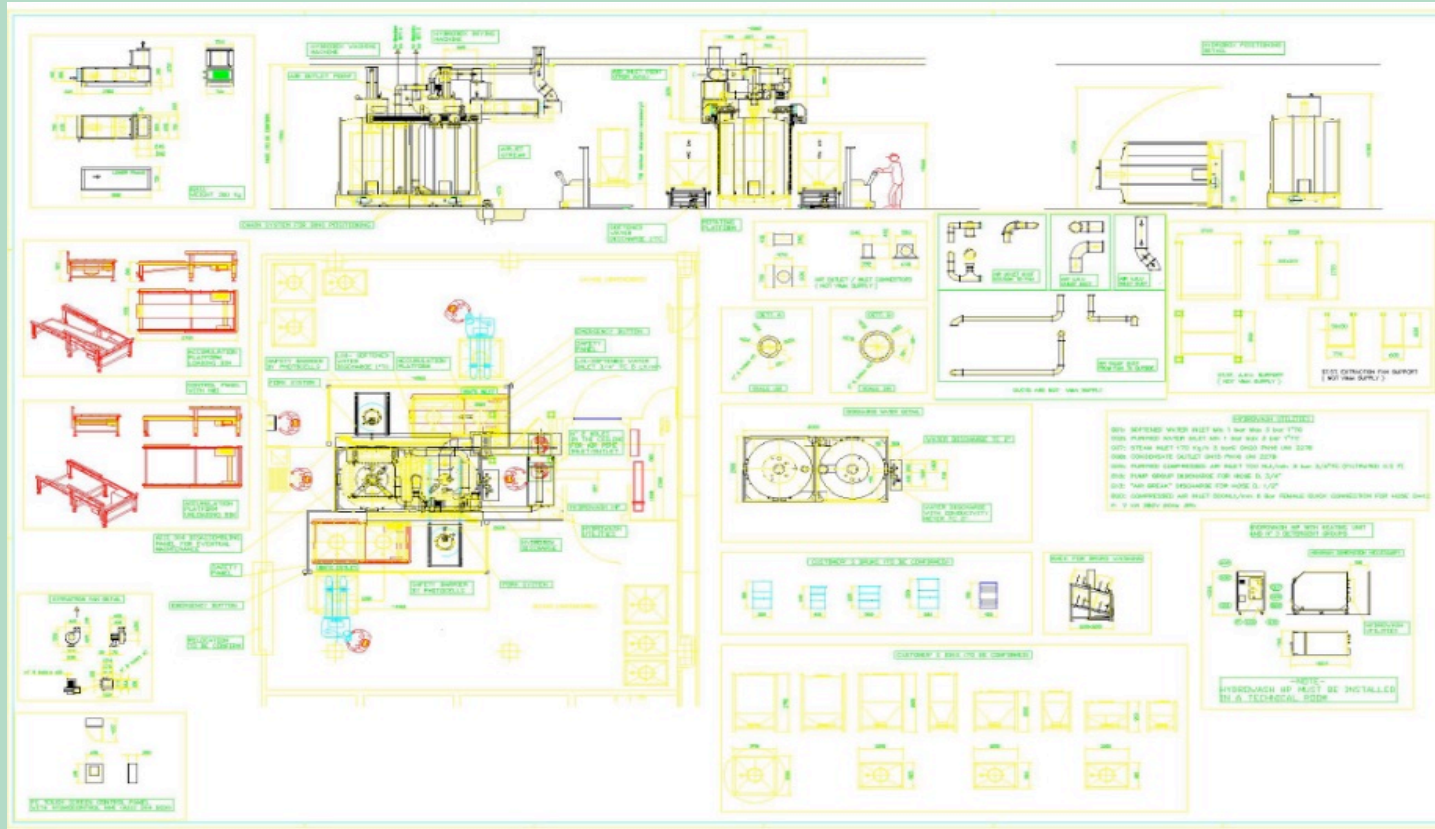
- Adjustable type wash nozzle ramps;
- Strategic positioning to cover all surfaces;
- Jet blade nozzles full cone type according to the parts to be washed;



DRYING GROUP

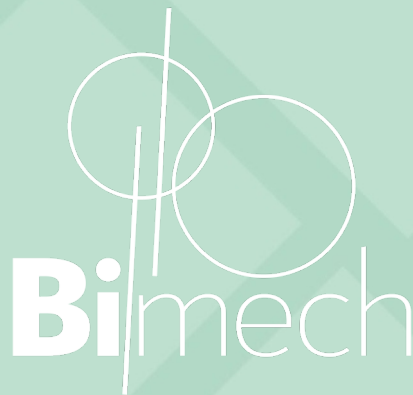
- Drying groups in technical Area;
- Dedicated control panels;
- Machine configuration according to environmental and climate where the machine will be used;
- Filters controlled by differential pressure switches;
- Grade of filtration G4, F9,H14
- Heating battery Steam/electric, dehumidifying, anti-Freeze and re-circulation;







Omp
MECCANICA CT S.p.A.



OMP S.p.A Società soggetta a direzione e coordinamento della Meccanica CT s.r.l.

Sede Legale Via Di Pietro Adalgiso, 1 – 66100 Chieti (CH)
www.gruppoot.com
C.F. - P.IVA 0243736 0692
e-mail: info@ompspa.eu
Cap. Soc. Euro 800.000,00 i.v. - C.C.I.A.A. CHIETI REA n.178909

Sede Operativa Divisione 1

Via Di Pietro Adalgiso, 1 66100 Chieti (CH)
Tel. +39 0871.565624
Fax. +39 0871.551110

Sede Operativa Divisione 2 & Bimech S.r.l.

Nucleo industriale PRT, C.da Saletti, 66020 Paglieta (CH)
Tel. +39 0871.565624
Fax. +39 0871.551110