

SPECIFICATIONS



1.8 MW 2022 New Caterpillar 3516B HD Diesel Generator Sets

1.8 MW 2022 New Caterpillar 3516B HD Diesel Generator Sets

Description

This diesel generator set is a high-capacity power generation unit designed for continuous duty and standby applications. Built with a heavy-duty engine platform, this generator set delivers reliable performance, fuel efficiency, and durability, making it suitable for industrial operations, utilities, and large-scale facilities. Its advanced engineering ensures stable electrical output and extended operational life under demanding conditions. This generator set is engineered to perform efficiently in both prime and standby power roles, offering flexibility for a wide range of applications.

KEY FEATURES:

- 1.8 MW rated electrical output
- Suitable for continuous, prime, and standby power applications
- Designed for integration into multi-unit installations

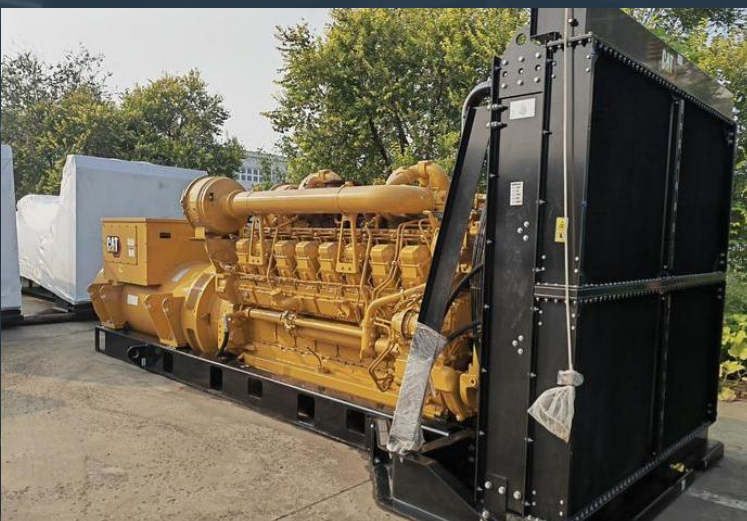
ADVANTAGES

- High fuel efficiency reduces operating costs and improves lifecycle economics
- Scalable power solution, easily combined with other units for larger installations
- Reliable heavy-duty design ensures consistent operation in demanding environments

Manufacturer	Caterpillar
Model	3516H-HD
Year	2022
Condition	New
Location	Asia
Qty Available	5 Units
Category	Diesel Generators
Subcategory	1 – 9 MW
Stock Number	USP010346
Wattage	1.8 MW
Hours	Zero
Frequency	50 Hz
Fuel Type	Diesel
Voltage	10500 Volts
Balance of Plant Available? (BOP)	-



Asset Photos



d with excellence
& extreme ownership



www.uspeglobal.com | Info@uspeglobal.com

Images may be representative, and actuals can be supplied upon request.