

SPECIFICATIONS



2 MW 2010 Used Caterpillar XQ2000 Diesel Power Modules Generator Sets

2 MW 2010 Used Caterpillar XQ2000 Diesel Power Modules Generator Sets

Description

This is a containerized diesel generator power module designed for continuous or standby power applications. The unit is based on the Cat 3516B-HD diesel engine coupled with a high-capacity alternator, delivering up to 2,000 kW (2 MW) of electrical output at standard site conditions. It is engineered as a mobile, self-contained power module, housed in a sound-attenuated 40-foot ISO container for ease of transport, installation, and operation. Its robust design makes it suitable for demanding environments, including utilities, mining, oil & gas, construction, and large-scale standby power projects.

KEY FEATURES:

- **Power Output:** ~2,000 kW (2 MW) at 60 Hz
- **Fuel:** Diesel, optimized for efficiency and reliability.
- **Applications:** Utilities, data centers, mining, oil & gas, emergency standby, and construction projects.

ADVANTAGES:

- **Mobile & Ready-to-Deploy:** Factory-packaged ISO container allows quick transportation and installation.
- **Flexible Operation:** Can operate as a single unit or in parallel with multiple sets for higher capacity.

Manufacturer	Caterpillar
Model	XQ2000
Year	2010
Condition	Used
Location	North America
Qty Available	2 Units
Category	Diesel Generators
Subcategory	1 – 9 MW
Stock Number	USP010675
Wattage	2 MW
Hours	4000; 3500
Frequency	60 Hz
Fuel Type	Diesel
Voltage	480 Volts
Balance of Plant Available? (BOP)	-



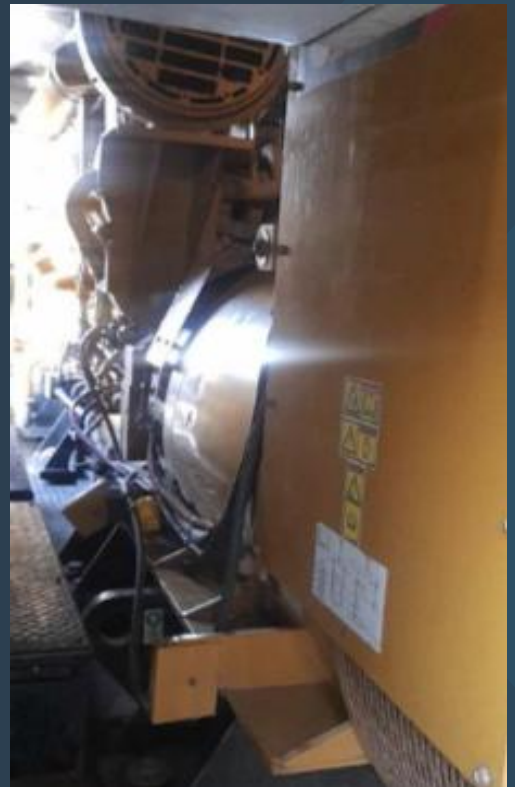
Asset Photos



www.uspeglobal.com | Info@uspeglobal.com

Images may be representative, and actuals can be supplied upon request.

Asset Photos



www.uspeglobal.com | Info@uspeglobal.com

Images may be representative, and actuals can be supplied upon request.