

SPECIFICATIONS



Harnessing Energy for Life

2.3 MW 2012 Used Niigata NGT3A-S Natural Gas Turbines

2.3 MW 2012 Used Niigata NGT3A-S Natural Gas Turbines

Description

This is a compact industrial gas turbine engineered for reliable and efficient power generation. Manufactured in 2012 and rated at 2.3 MW, this natural gas–fueled unit is designed for continuous-duty, standby, or peaking applications in industrial, commercial, and utility sectors. Its lightweight, modular construction and robust design allow for quick installation, ease of maintenance, and high operational availability. With low emissions and efficient fuel consumption, the unit is well-suited for facilities seeking dependable small to mid-scale power generation with reduced environmental impact.

KEY FEATURES:

- Rated output: 2.3 MW
- Compact and modular turbine design
- Suitable for continuous-duty, standby, or peaking operations

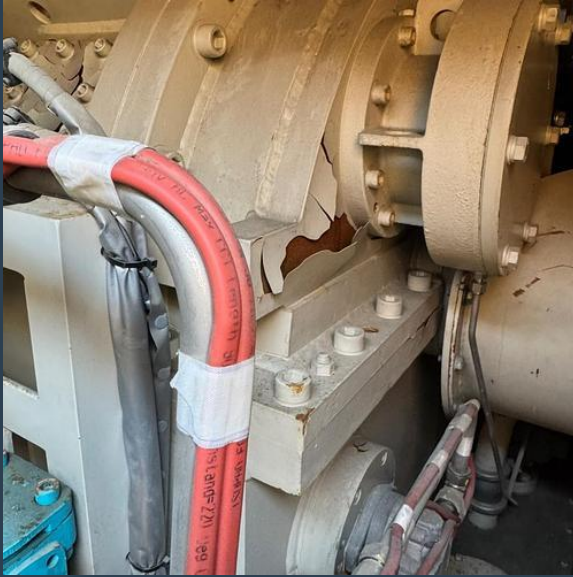
ADVANTAGES :

- High operational efficiency with low fuel consumption
- Environmentally friendly performance with reduced NOx and CO₂ emissions
- Quick installation and commissioning due to compact footprint

Manufacturer	Niigata
Model	NGT3A-S
Year	2012
Condition	Used
Location	Asia
Qty Available	1 Unit
Category	Natural Gas Turbines
Subcategory	1 – 9 MW
Stock Number	USP010807
Wattage	2.3 MW
Hours	300
Frequency	-
Fuel Type	Natural Gas
Voltage	-
Balance of Plant Available? (BOP)	-



Asset Photos



speed with excellence
& extreme ownership



www.uspeglobal.com | Info@uspeglobal.com

Images may be representative, and actuals can be supplied upon request.