

# SPECIFICATIONS



## 1.4 MW 2022 New Mitsubishi S12R-PTA Diesel Generator Sets

# 1.4 MW 2022 New Mitsubishi S12R-PTA Diesel Generator Sets

## Description

This diesel generator set is a robust, high-performance power solution rated at 1.4 MW for prime or standby applications. Powered by the Mitsubishi S12R series 12-cylinder, turbocharged, aftercooled diesel engine, it is engineered for dependable operation, fuel efficiency, and long service life. This generator set is ideal for industrial facilities, commercial complexes, mining operations, and utility backup systems, offering reliable power even under demanding environmental conditions. Delivered as a complete package, it includes the engine, high-efficiency alternator, cooling system, control panel, and all necessary auxiliaries for straightforward installation and commissioning.

### KEY FEATURES:

- **Rated output:** 1.4 MW prime/continuous power
- **Efficiency:** Optimized combustion system for reduced fuel consumption
- **Emissions compliance:** Meets applicable standards depending on configuration

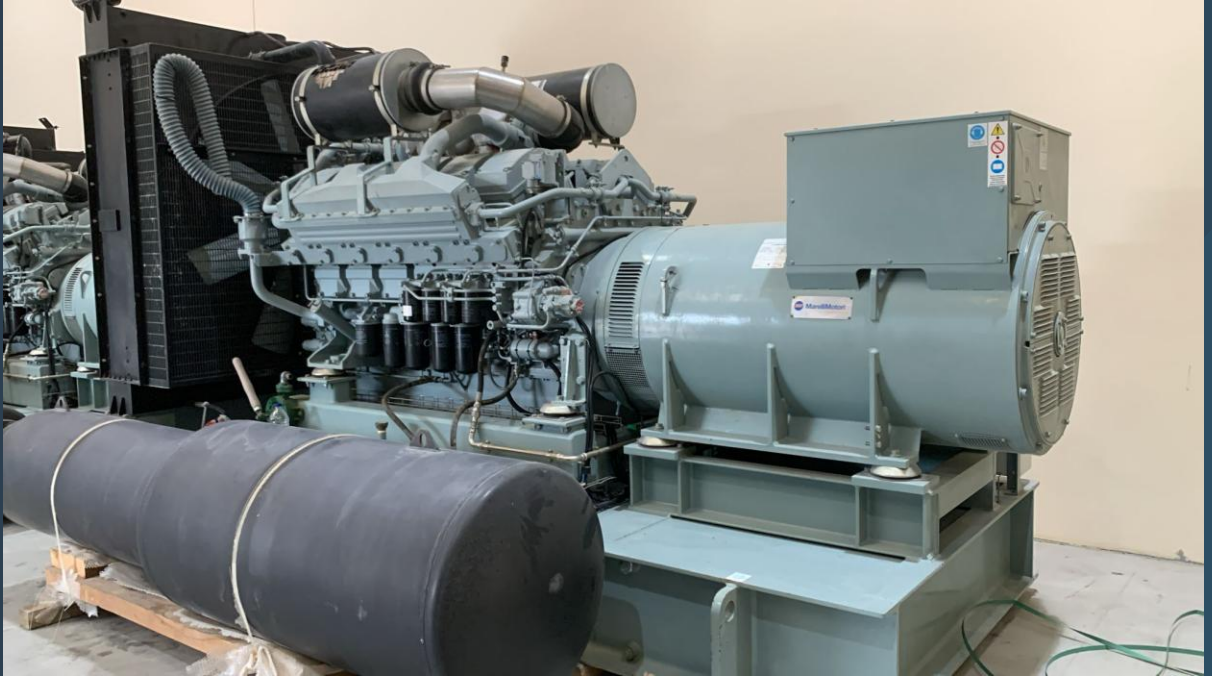
### ADVANTAGES:

- **High power density:** Delivers substantial output from a compact design
- **Versatile operation:** Suitable for continuous duty, prime power, or standby applications
- **Complete solution:** Supplied with all major auxiliaries for quick setup and commissioning

Manufacturer	Mitsubishi
Model	S12R-PTA
Year	2022
Condition	New
Location	Asia
Qty Available	1 Unit
Category	Diesel Generators
Subcategory	1 -9 MW
Stock Number	USP010822
Wattage	1.4 MW
Hours	Zero
Frequency	50 Hz
Fuel Type	Diesel
Voltage	380 Volts
Balance of Plant Available? (BOP)	-



# Asset Photos





# Asset Photos

