

SPECIFICATIONS



Harnessing Energy for Life

4.6 MW 2009 New Caterpillar 3616 Diesel Generator Sets

4.6 MW 2009 New Caterpillar 3616 Diesel Generator Sets

Description

The diesel generator sets are heavy-duty power generation units engineered for reliable continuous and standby operation. Built with the Caterpillar 3616 engine, a 16-cylinder, turbocharged, aftercooled diesel engine, these generator sets are designed to deliver 4.6 MW of dependable electrical power. Manufactured in 2009 and in new condition, they are suitable for industrial facilities, utilities, and large-scale power projects requiring high output and robust performance. This series is known for long service life, durability, and efficient operation under demanding conditions.

KEY FEATURES:

- Rated output: 4.6 MW
- Designed for continuous, standby, or prime power applications
- Heavy-duty, high-capacity diesel engine for demanding environments

ADVANTAGES:

- High power output suited for large industrial and utility applications
- Durable engine design ensures long service life and reduced downtime
- Flexibility for continuous, standby, or emergency power needs

Manufacturer	Caterpillar
Model	3616
Year	2009
Condition	New
Location	Asia
Qty Available	8 Units
Category	Diesel Generators
Subcategory	1 – 9 MW
Stock Number	USP010746
Wattage	4.6 MW
Hours	Zero
Frequency	50/60 Hz
Fuel Type	Diesel
Voltage	11000 Volts
Balance of Plant Available? (BOP)	-



Asset Photos



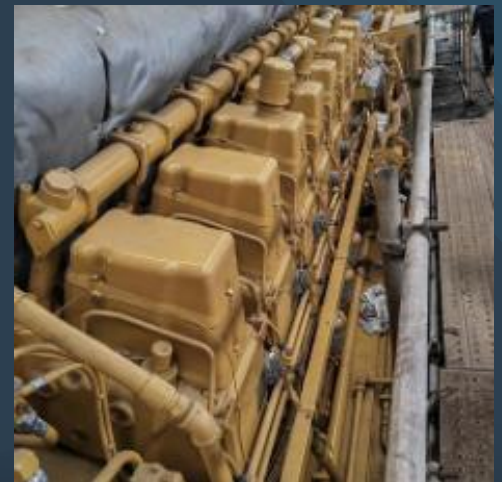
speed with excellence
& extreme ownership



www.uspeglobal.com | Info@uspeglobal.com

Images may be representative, and actuals can be supplied upon request.

Asset Photos



speed with excellence
& extreme ownership



www.uspeglobal.com | Info@uspeglobal.com

Images may be representative, and actuals can be supplied upon request.