

SPECIFICATIONS



Harnessing Energy for Life

17 MW 2001 Used Wartsila 18V34SG Natural Gas Power Plant

17 MW 2001 Used Wartsila 18V34SG Natural Gas Power Plant

Description

This natural gas power plant is a medium-speed power generation facility designed for continuous and base-load applications. Powered by the proven 18-cylinder 34SG engine platform, this plant delivers reliable and efficient electrical output while utilizing natural gas as its primary fuel, offering lower emissions and improved environmental performance compared to traditional liquid-fuel-based systems.

The plant has an established operational history and remains a robust solution for industrial facilities, utilities, or independent power producers seeking dependable and economical electricity production. Supplied as a complete power plant, it includes the main engine-generator unit along with auxiliary and balance-of-plant systems, allowing straightforward integration into existing infrastructure or operation as a stand-alone facility.

KEY FEATURES:

- 17 MW total electrical output
- Complete plant configuration with auxiliary systems included
- Designed for continuous duty and base-load applications

ADVANTAGES

- Reliable engine design ensures long-term, stable operation under varying load conditions
- Complete plant delivery minimizes the need for additional equipment procurement

Manufacturer	Wartsila
Model	18V34SG
Year	2001
Condition	Used
Location	Asia
Qty Available	3 Units
Category	Natural Gas Generators
Subcategory	10 – 99 MW
Stock Number	USP010347
Wattage	17 MW
Hours	84000; 85000; 70000
Frequency	50 Hz
Fuel Type	Natural Gas
Voltage	11000 Volts
Balance of Plant Available? (BOP)	-



Asset Photos



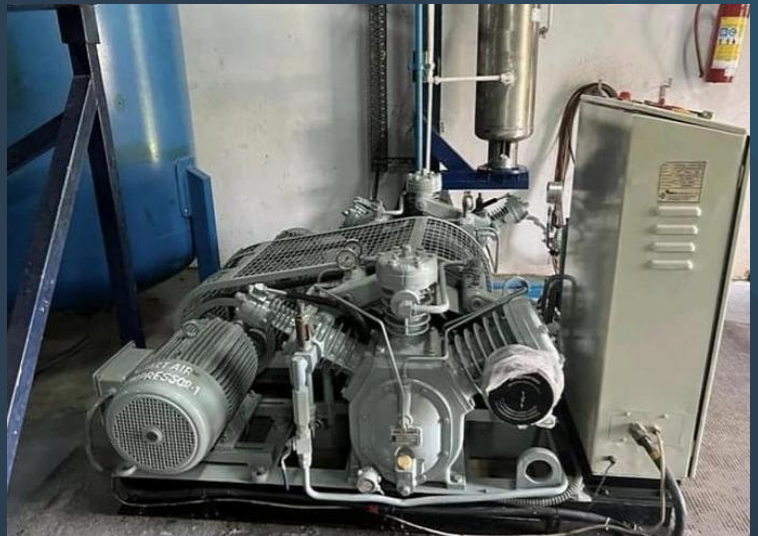
with excellence
& extreme ownership



www.uspeglobal.com | Info@uspeglobal.com

Images may be representative, and actuals can be supplied upon request.

Asset Photos



ed with excellence
& extreme ownership



www.uspeglobal.com | Info@uspeglobal.com

Images may be representative, and actuals can be supplied upon request.