

# SPECIFICATIONS



## 45 MW 2020 Used Siemens SGT-700 DLE Natural Gas Combined Cycle Power Plant

# 45 MW 2020 Used Siemens SGT-700 DLE Natural Gas Combined Cycle Power Plant

## Description

This is a natural gas–fired combined cycle power plant commissioned in 2020, configured around an industrial gas turbine with a Dry Low Emission (DLE) combustion system and a heat recovery steam cycle. The plant integrates a gas turbine generator, heat recovery steam generator (HRSG), and steam turbine generator to convert exhaust heat into additional electrical output, resulting in higher overall plant efficiency compared to simple-cycle operation. The DLE system enables low NOx emissions without the need for post-combustion treatment, supporting compliance with modern environmental standards.

The combined cycle configuration is designed for high-efficiency base-load and mid-merit operation, with the flexibility to respond to grid demand variations. As a modern used asset, the plant offers near-new performance, strong reliability, and optimized fuel utilization.

### KEY FEATURES:

- Net plant output: ~45 MW
- Combined cycle configuration (gas turbine + HRSG + steam turbine)
- Dry Low Emission (DLE) combustion system

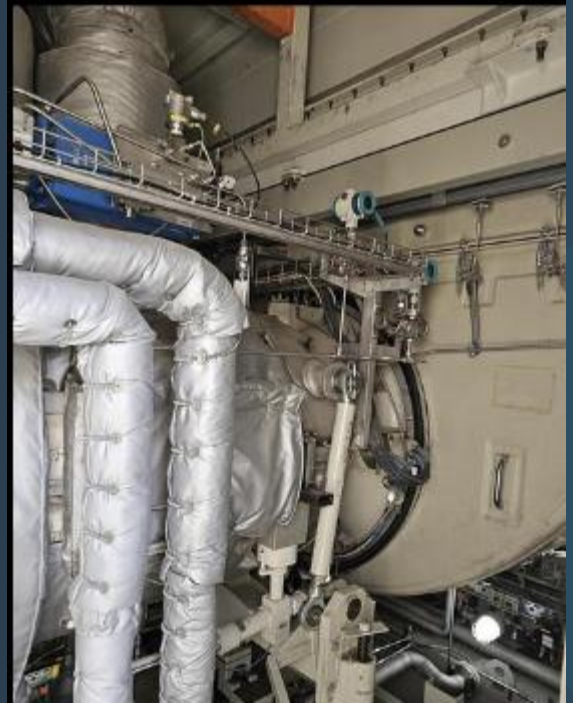
### ADVANTAGES

- Low emissions profile without secondary emissions control systems
- Stable and reliable output for grid or industrial supply
- Near-new asset with long remaining operational life

Manufacturer	Siemens
Model	SGT-700 DLE
Year	2020
Condition	Used
Location	China
Qty Available	2 Units
Category	Natural Gas Turbines
Subcategory	10 - 99 MW
Stock Number	USP010722
Wattage	31.6 MW
Hours	201
Frequency	50 Hz
Fuel Type	Natural Gas
Voltage	10500 volts
Balance of Plant Available? (BOP)	



# Asset Photos



# Asset Photos

