

SPECIFICATIONS



2 MW 2014 Used Kipor KD16V117ZLCR Diesel Generators Power Plant

2 MW 2014 Used Kipor KD16V117ZLCR Diesel Generators Power Plant

Description

This power plant consists of used diesel generator sets manufactured in 2014, each powered by a 16-cylinder, turbocharged, liquid-cooled engine model KD16V117ZLCR. The units are designed for reliable continuous or standby power generation in industrial, commercial, or utility applications. Featuring robust construction and efficient performance, these medium-speed diesel generators deliver approximately 2 MW of electrical output per unit.

KEY FEATURES:

- **Diesel-fueled**, turbocharged and aftercooled engine
- **2014 year of manufacture** – low-hour, used condition
- Rated output, **2 MW per unit**

ADVANTAGES

- Designed for **continuous or standby duty** operation
- Scalable installation suitable for parallel operation or expansion
- Ideal for regions with limited grid access or as backup generation for critical operations

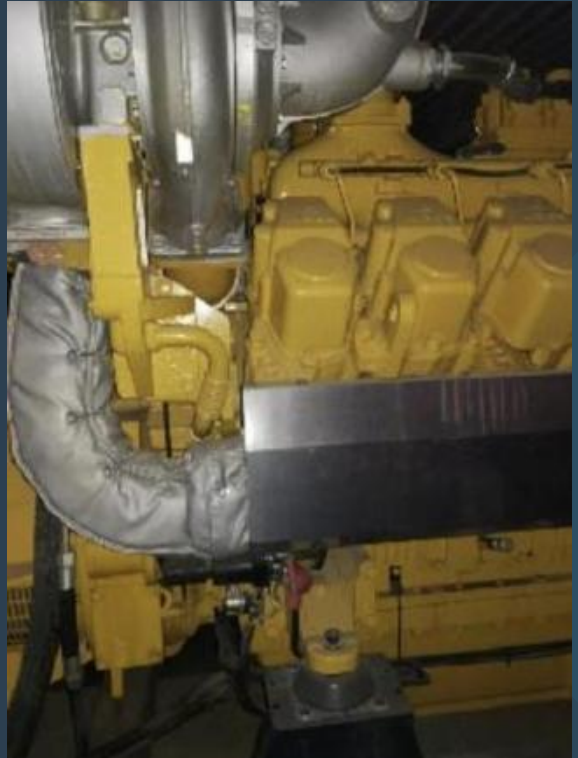
Manufacturer	Kipor
Model	KD16V117ZLCR
Year	2014
Condition	Used
Location	Asia
Qty Available	20 Units
Category	Diesel Generators
Subcategory	1 – 9 MW
Stock Number	USP010276
Wattage	2 MW per unit
Hours	50 hours
Frequency	50 Hz
Fuel Type	Diesel
Voltage	10500 Volts
Balance of Plant Available? (BOP)	-



Asset Photos



Asset Photos



www.uspeglobal.com | Info@uspeglobal.com

Images may be representative, and actuals can be supplied upon request.