

# SPECIFICATIONS



## 14 MW 2007 Used MTU 16V4000 Diesel Generator Sets

# 14 MW 2007 Used MTU 16V4000 Diesel Generator Sets

## Description

The diesel generator set is a high-output, industrial-grade power generation unit. The 2007-built units, rated at a combined capacity of 14 MW, are based on the MTU Series 4000 engine platform—renowned for its reliability, efficiency, and long service life in demanding applications.

Each generator set is powered by the 16V4000 engine, a 16-cylinder, turbocharged, and aftercooled V-type diesel engine designed for continuous power generation. The units are coupled to a high-efficiency synchronous alternator, delivering stable output suitable for prime power, continuous duty, or standby applications.

### KEY FEATURES:

- **Total Power Output:** ~14 MW (multiple units combined).
- **Alternator:** High-efficiency synchronous generator for reliable power delivery.
- **Applications:** Suitable for continuous base load, standby, or emergency power.

### ADVANTAGES:

- **High Power Density:** Compact design with high output, ideal for large-scale power generation within a limited footprint.
- **Fuel Efficiency:** Optimized combustion system ensures lower fuel consumption and reduced operating costs.

Manufacturer	MTU
Model	16V4000
Year	2007
Condition	Used
Location	North America
Qty Available	7 Units
Category	Diesel Generators
Subcategory	10 – 99 MW
Stock Number	USP010671
Wattage	14 MW (2 MW per unit)
Hours	1200
Frequency	60 Hz
Fuel Type	Diesel
Voltage	13800 Volts
Balance of Plant Available? (BOP)	-



# Asset Photos

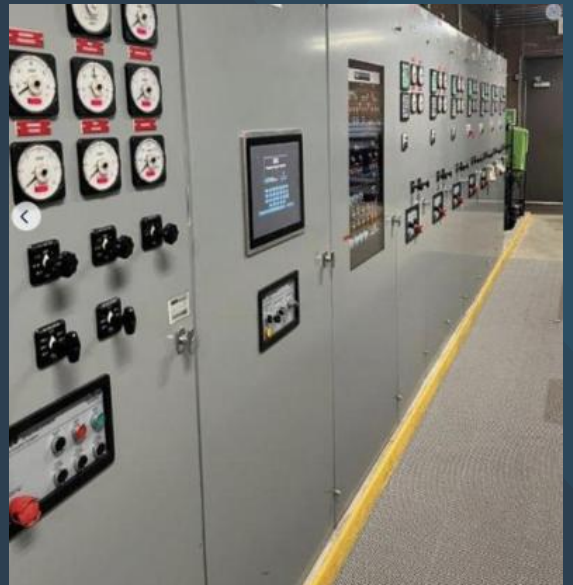
---



[www.uspeglobal.com](http://www.uspeglobal.com) | [Info@uspeglobal.com](mailto:Info@uspeglobal.com)

*Images may be representative, and actuals can be supplied upon request.*

# Asset Photos



speed with excellence  
& extreme ownership



[www.uspeglobal.com](http://www.uspeglobal.com) | [Info@uspeglobal.com](mailto:Info@uspeglobal.com)

*Images may be representative, and actuals can be supplied upon request.*