

SPECIFICATIONS



1 MW 2005 Used Jenbacher J320 Natural Gas Generator Set

1 MW 2005 Used Jenbacher J320 Natural Gas Generator Set

Description

This generator set is a robust power solution designed for continuous and standby duty applications. Built on the proven J320 engine platform, it delivers reliable electrical output with strong performance under varying load conditions. With its durable mechanical design and efficient diesel operation, the unit is suitable for industrial facilities, utilities, and large-scale commercial applications.

The generator is engineered for long service intervals and dependable operation, supported by an established service and spare parts network. Its design emphasizes stable voltage and frequency control, making it appropriate for critical power needs as well as general industrial use.

KEY FEATURES:

- Rated output: 1 MW
- Heavy-duty alternator for reliable power delivery
- Designed for continuous and standby duty operations

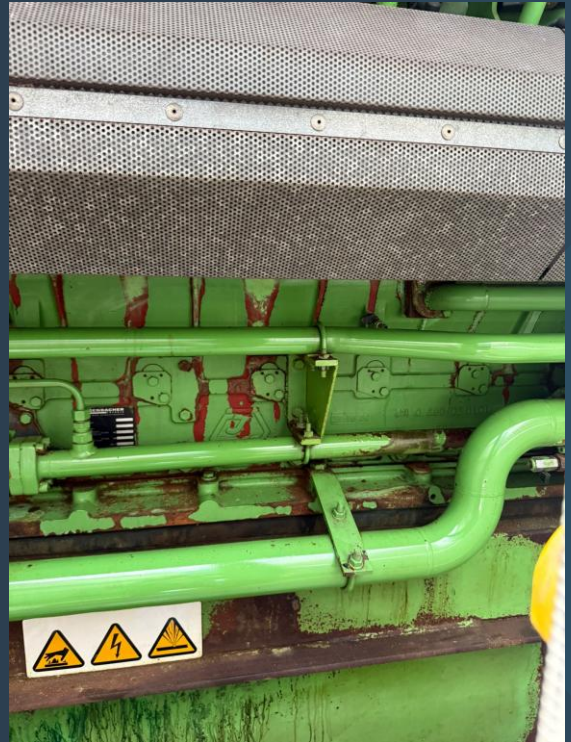
ADVANTAGES

- Flexible use across industrial, utility, and commercial sectors
- Durable construction suited for demanding operating environments
- Strong fuel efficiency for cost-effective power generation

Manufacturer	Jenbacher
Model	J320
Year	2005
Condition	Used
Location	Asia
Qty Available	1 Unit
Category	Natural Gas Generators
Subcategory	1 – 9 MW
Stock Number	USP010866
Wattage	1 MW
Hours	30,000
Frequency	50 Hz
Fuel Type	Natural Gas
Voltage	400 Volts
Balance of Plant Available? (BOP)	-



Asset Photos



Asset Photos

