

SPECIFICATIONS



Harnessing Energy for Life

7.9 MW 2021 New Solar Taurus 70 Natural Gas Generator Set

7.9 MW 2021 New Solar Taurus 70 Natural Gas Generator Set

Description

This generator set represents a modern, high-performance power generation solution. The unit is engineered to deliver reliable, continuous electricity while maintaining excellent fuel efficiency and low environmental emissions. Its advanced gas turbine design combines proven mechanical robustness with a compact footprint, providing flexibility for integration into a wide range of operational environments.

The package is optimized for natural gas combustion, delivering a clean, efficient energy output that supports compliance with modern emissions standards. Its combination of high-power density, fuel efficiency, and low emissions makes it suitable for applications where reliability, environmental performance, and operational flexibility are critical.

KEY FEATURES:

- **Rated Output:** 7.9 MW
- **Low Emissions:** Designed for reduced NOx and CO emissions in line with modern environmental requirements when operated on natural gas.
- **Modular Package:** Factory-assembled skid for simplified installation and commissioning.

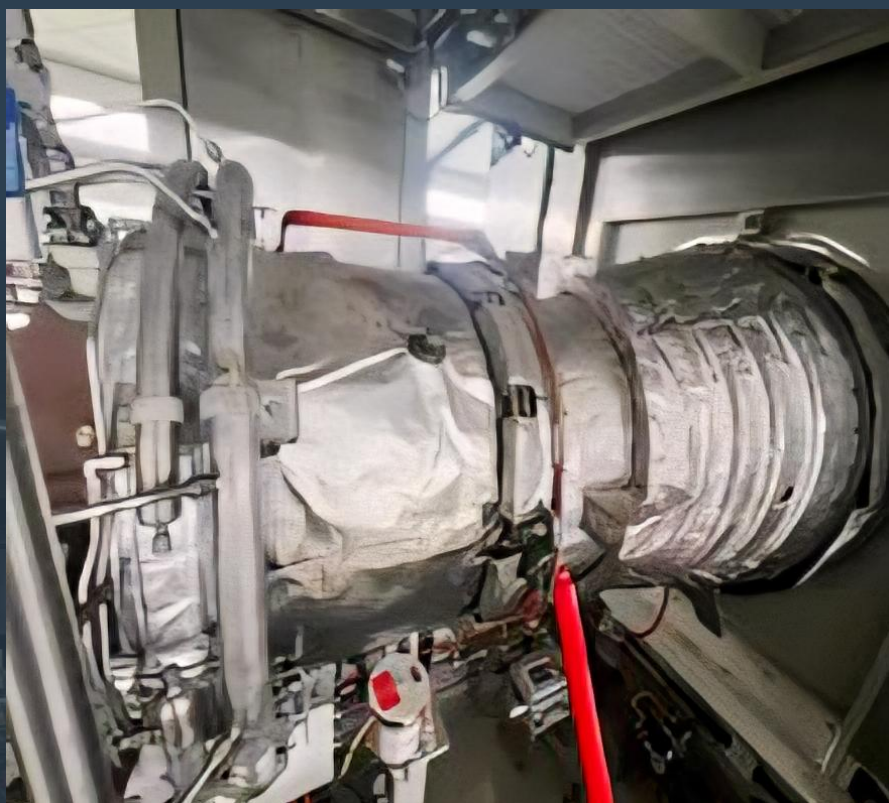
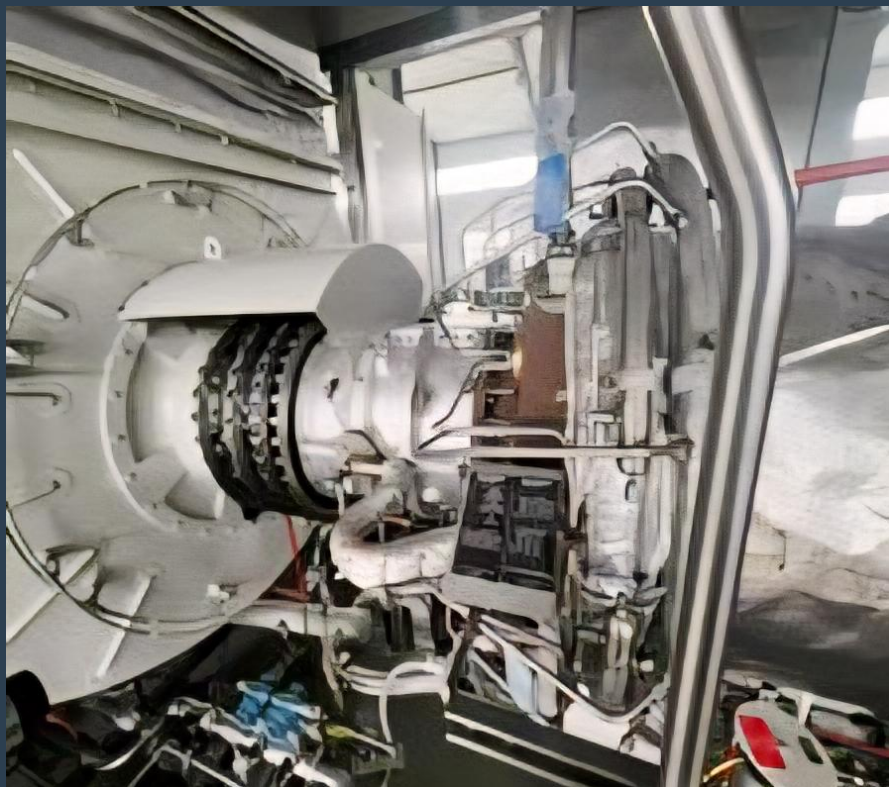
ADVANTAGES

- **Fuel Flexibility (Natural Gas Focus):** Optimized for natural gas with lower fuel costs and cleaner combustion compared to liquid fuels.
- **Environmental Performance:** Reduced emissions footprint supports compliance with regional air quality standards and can integrate with emissions monitoring programs.

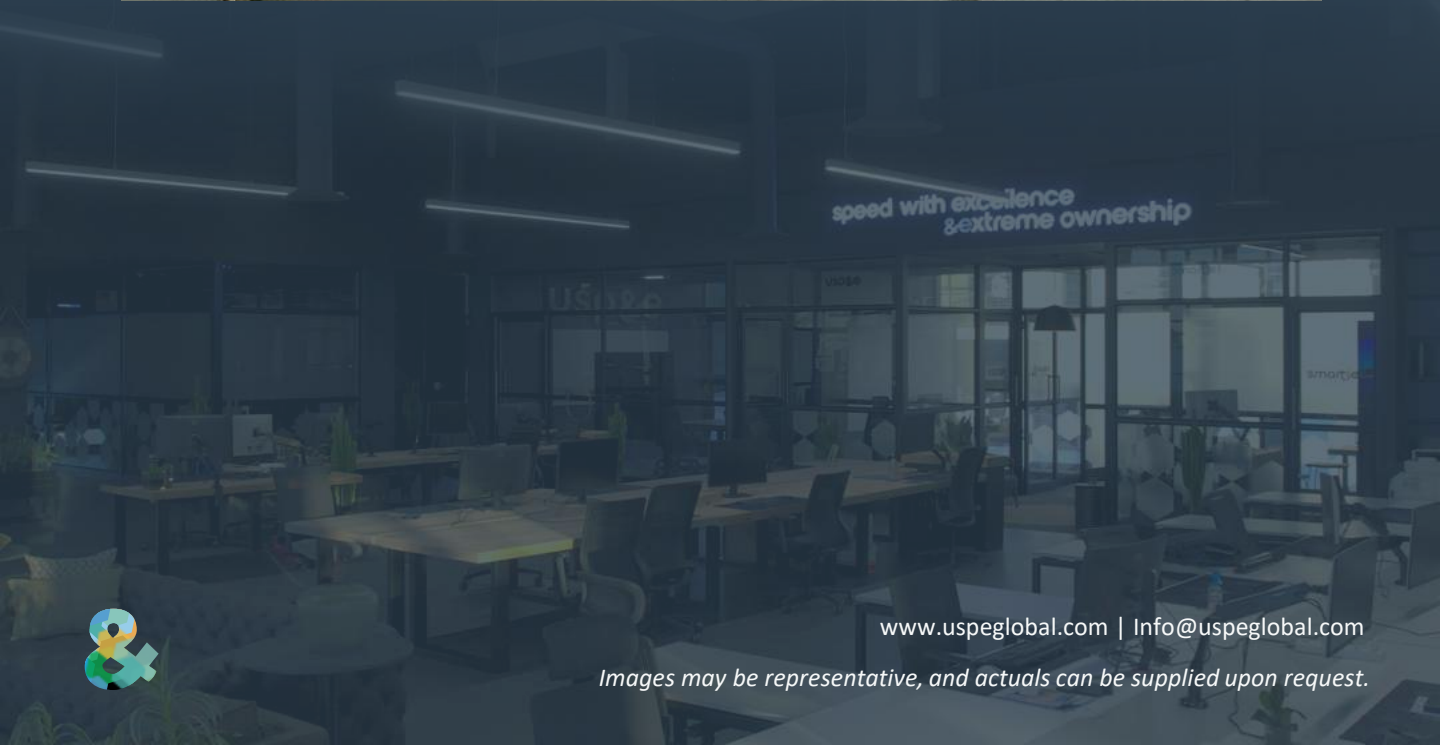
Manufacturer	Solar Taurus
Model	T70
Year	2021
Condition	New (Unused)
Location	Asia
Qty Available	1 Unit
Category	Natura Gas Generators
Subcategory	1 – 9 MW
Stock Number	USP010947
Wattage	7.9 MW
Hours	Zero
Frequency	50 Hz
Fuel Type	Natural Gas
Voltage	10500 Volts
Balance of Plant Available? (BOP)	-



Asset Photos



Asset Photos



www.uspeglobal.com | Info@uspeglobal.com

Images may be representative, and actuals can be supplied upon request.