

SPECIFICATIONS



3.5 MW 1998 Used Mitsubishi Steam Turbine Generator Set

3.5 MW 1998 Used Mitsubishi Steam Turbine Generator Set

Description

This used steam turbine generator from 1998 delivers proven industrial power generation performance for facilities requiring reliable cogeneration and combined heat and power (CHP) solutions. This pre-owned Mitsubishi turbine generator set offers cost-effective electricity production for manufacturing plants, process industries, and independent power producers seeking surplus steam turbine generators or refurbished power generation equipment.

Ideal for waste heat recovery systems, boiler integration, and process steam applications, this second-hand turbine generator enables facilities to optimize energy efficiency while reducing operational costs. As used power plant equipment, this system provides turnkey capability at significantly lower capital investment compared to new installations.

KEY FEATURES:

- 3.5 MW electrical output capacity for medium-scale industrial applications
- Steam turbine prime mover with generator coupling for efficient energy conversion
- Compatible with various steam conditions and industrial process requirements

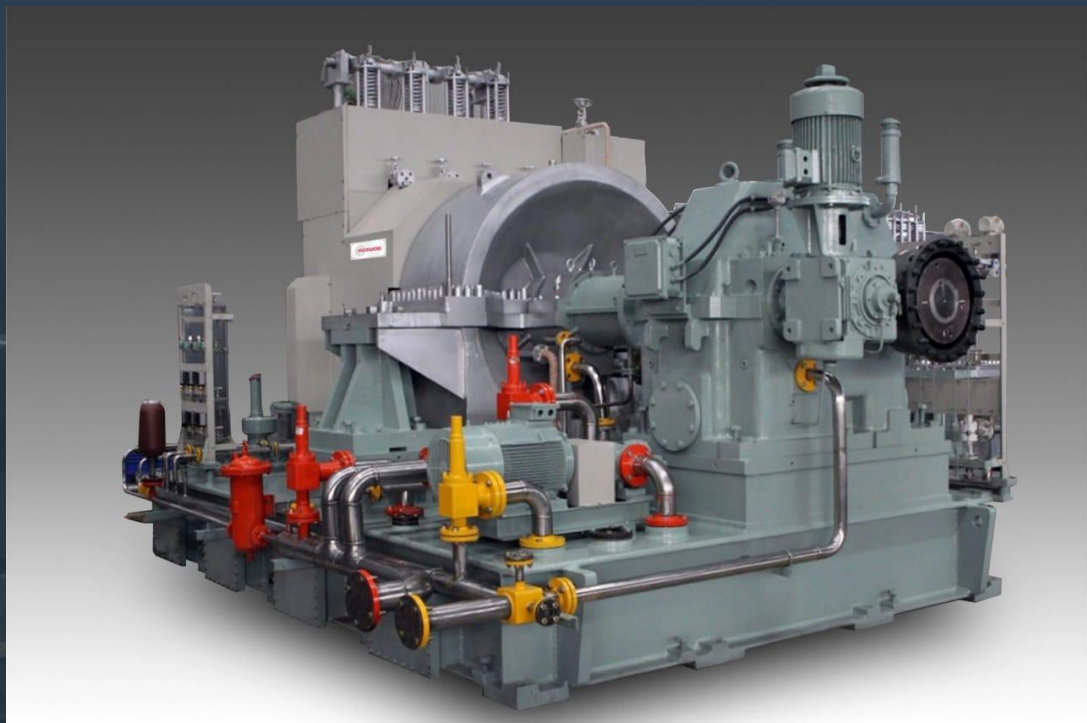
ADVANTAGES

- Significant capital cost savings compared to new equipment procurement
- Improves facility energy efficiency and carbon footprint
- Excellent for power generation projects with limited budgets

Manufacturer	Mitsubishi
Model	Steam Turbine
Year	1998
Condition	Used
Location	Asia
Qty Available	1 Unit
Category	Steam
Subcategory	1 – 9 MW
Stock Number	USP010964
Wattage	3.5 MW
Hours	NA
Frequency	60 Hz
Fuel Type	NA
Voltage	11000 Volts
Balance of Plant Available? (BOP)	-



Asset Photos



www.uspeglobal.com | Info@uspeglobal.com

Images may be representative, and actuals can be supplied upon request.