

# SPECIFICATIONS



43 MW 1994 Used GE LM 6000  
PA Natural Gas Power Plant  
Generator Sets

# 43 MW 1994 Used GE LM 6000 PA Natural Gas Power Plant Generator Sets

## Description

This power plant features a 1994 GE LM6000 PA aeroderivative gas turbine generator set, designed for high efficiency and fast start-up operations. Fueled by natural gas, the LM6000 PA is known for its reliable performance in both peaking and base-load power generation applications. The unit is well-suited for industrial and utility-scale use, offering modular design and operational flexibility.

### KEY FEATURES:

- **Dry Low Emission (DLE) Combustion:** Minimizes NOx and CO emissions without water injection
- **Fuel Flexibility:** Primarily designed for natural gas, with variants supporting dual fuel or water/steam injection for enhanced output or emission control

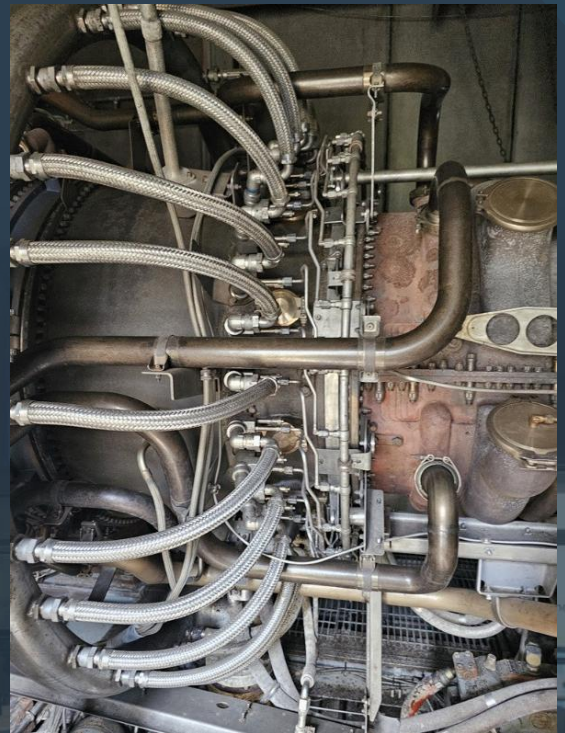
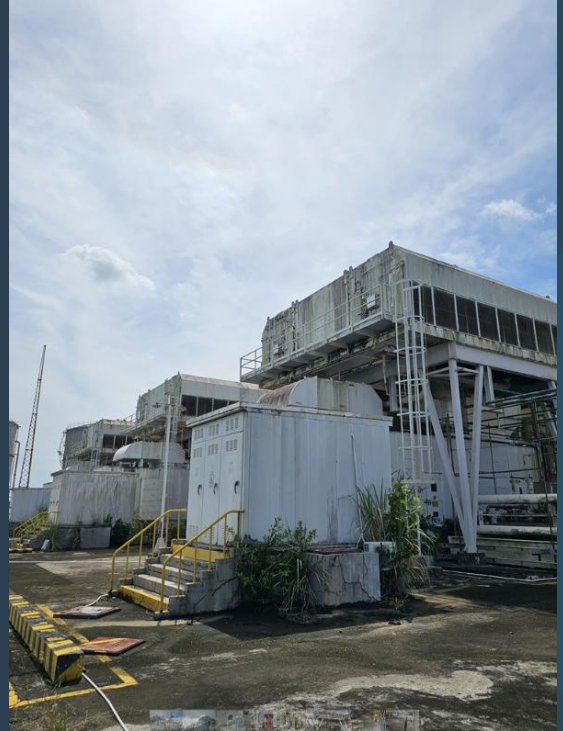
### ADVANTAGES:

- **Compact Footprint:** Compact, modular packaging allows quick site installation and easier maintenance
- **Scalable Upgrades:** Optional enhancements like SPRINT intercooling, steam injection, or conversion from PA to PC/PG variants can boost power, efficiency and emissions performance.

Manufacturer	General Electric
Model	LM6000 PA
Year	1994
Condition	Used
Location	Asia
Qty Available	3
Category	Natural Gas Turbines
Subcategory	10 – 99 MW
Stock Number	#USP010551
Wattage	43 MW
Hours	16000
Frequency	50 Hz
Fuel Type	Natural Gas
Voltage	11500
Balance of Plant Available? (BOP)	-

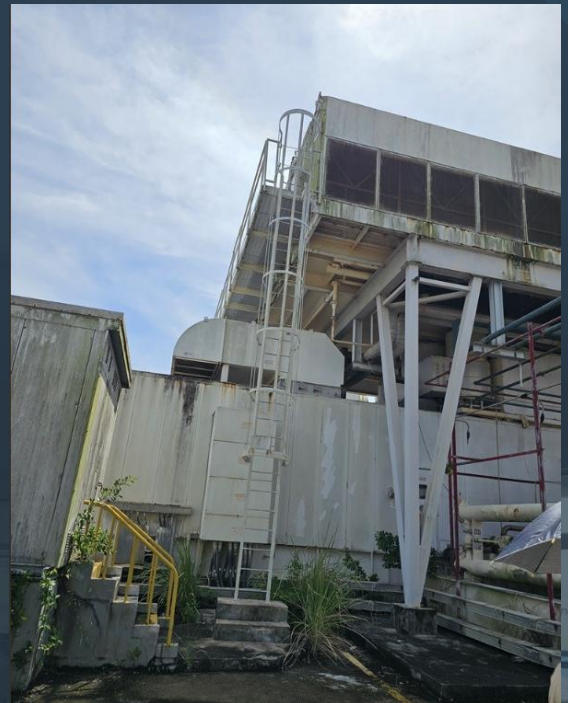


# Asset Photos – 1<sup>st</sup> Unit





# Asset Photos – 2<sup>nd</sup> Unit





# Asset Photos – 3<sup>rd</sup> Unit

---

