

# SPECIFICATIONS



## 5.6 MW 2012 New Solar Taurus T60 Natural Gas Generator Sets

# 5.6 MW 2012 New Solar Taurus T60 Natural Gas Generator Sets

## Description

This 5.6 MW 2012 Solar Taurus T60 natural gas generator set is a high-capacity, industrial-grade power generation solution designed for reliable continuous or standby operations. Engineered for efficiency and durability, it is suitable for large-scale industrial facilities, utilities, and mission-critical applications where stable and consistent power output is essential. With modern natural gas technology, the unit offers cleaner emissions and lower operational costs compared to traditional diesel generators. As a 2012 unit, it combines proven turbine technology with minimal wear for a dependable, long-term energy solution.

### KEY FEATURES:

- Rated Power Output: 5.6 MW
- Compact footprint suitable for installation in turbine halls or industrial plants
- Designed for continuous or standby operation

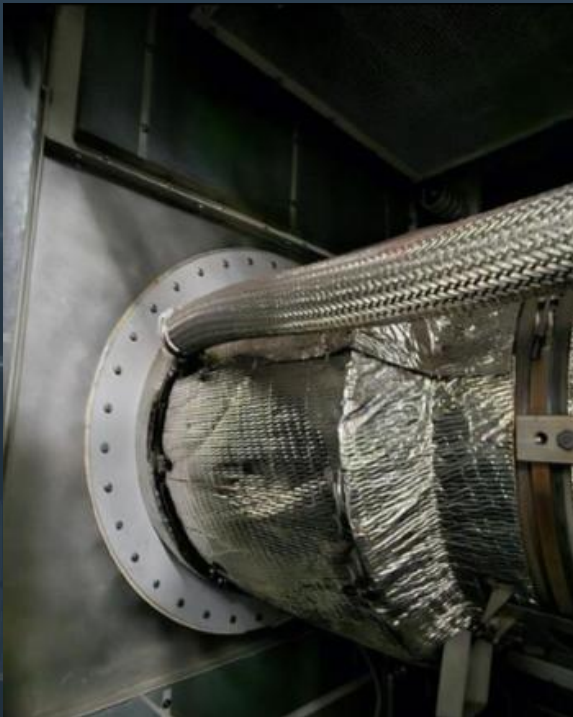
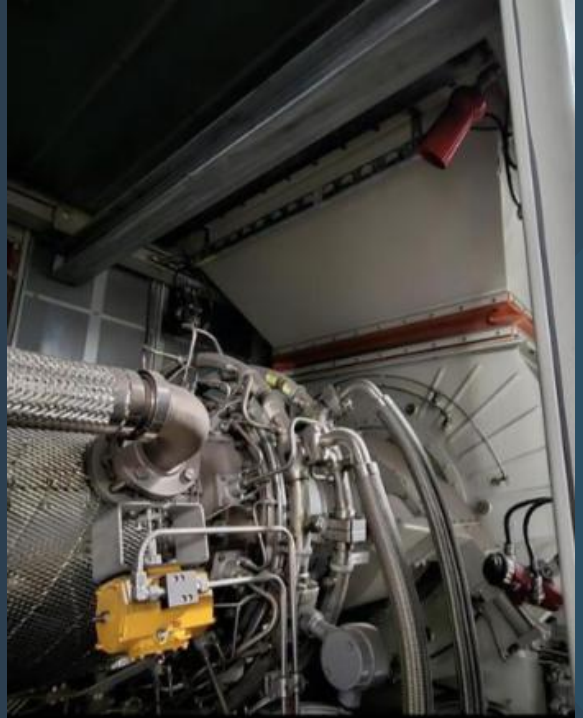
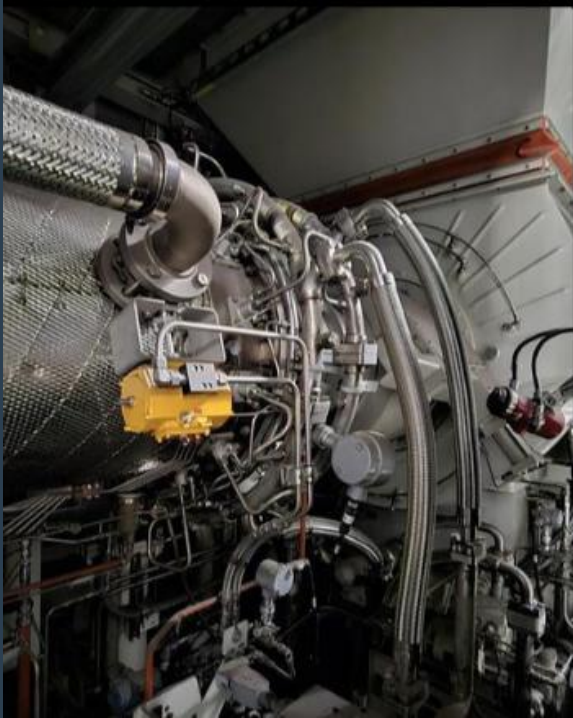
### ADVANTAGES

- Cleaner fuel operation reduces emissions and environmental impact
- Flexible deployment for base-load, peak-load, or emergency standby power
- Large-capacity output supports industrial or utility-scale power needs

Manufacturer	Solar
Model	Taurus 60
Year	2012
Condition	New
Location	Asia
Qty Available	2 Units
Category	Natural Gas Turbines
Subcategory	1 – 9 MW
Stock Number	USP010677
Wattage	5.6 MW
Hours	Zero
Frequency	50 Hz
Fuel Type	Natural Gas
Voltage	11000 Volts
Balance of Plant Available? (BOP)	-



# Asset Photos





# Asset Photos

