

# SPECIFICATIONS



## 15 MW 2017 Used Siemens SGT-400DLE Natural Gas Turbine Generator Sets

# 15 MW 2017 Used Siemens SGT-400DLE Natural Gas Turbine Generator Sets

## Description

This gas turbine generator set is an advanced industrial turbined engineered for efficient, low-emission power generation. The unit is equipped with a dual-shaft configuration, with Dry Low Emission (DLE) combustion system, achieving low NOx levels without the need for water or steam injection. Originally designed for continuous-duty or peak applications, the unit is well-suited for industrial facilities, utilities, or oil and gas installations requiring dependable distributed generation.

### KEY FEATURES:

- Fuel: Natural gas (primary), dual-fuel capable (optional configuration)
- Configuration: Dual-shaft for mechanical drive or power generation
- Frequency: 50 Hz or 60 Hz (configurable)

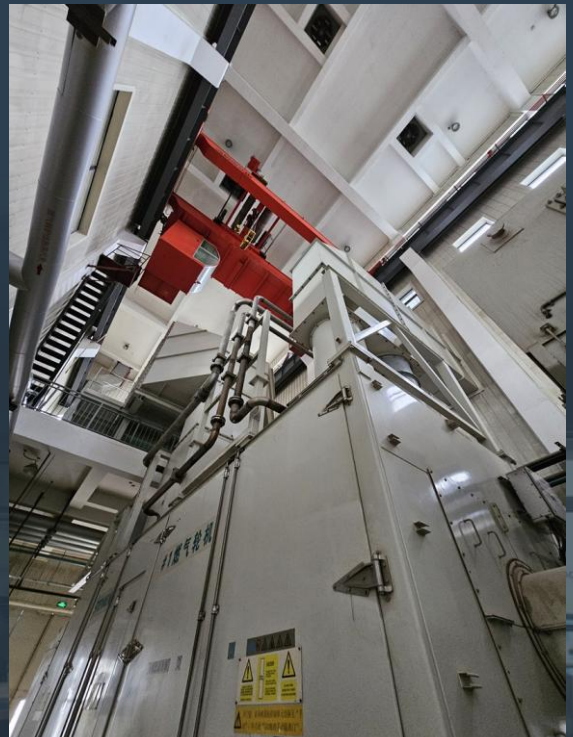
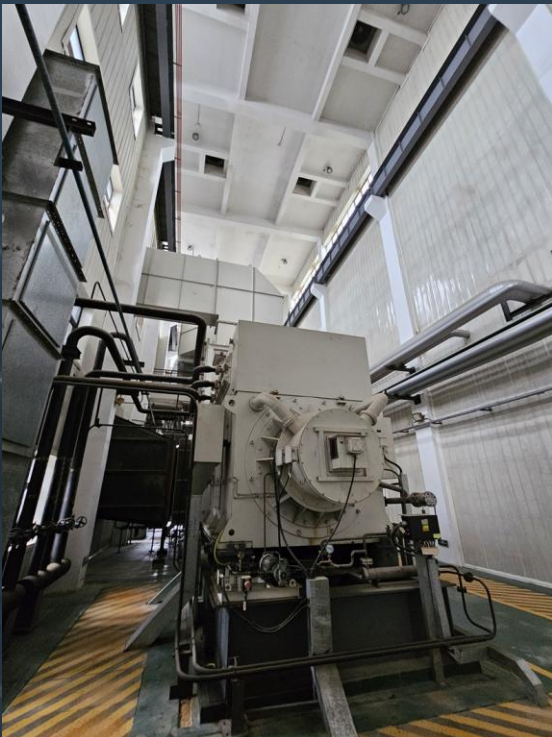
### ADVANTAGES:

- Proven efficiency and high availability in industrial environments
- Compact footprint and modular design ease installation and relocation
- Designed for fast start and cycling operations

Manufacturer	Siemens
Model	SGT-400DLE
Year	2017
Condition	Used
Location	Asia
Qty Available	2 Units
Category	Natural Gas Turbines
Subcategory	10 – 99 MW
Stock Number	USP010796
Wattage	15 MW
Hours	18000; 17000
Frequency	50 Hz
Fuel Type	Natural Gas
Voltage	10500
Balance of Plant Available? (BOP)	-



# Asset Photos



# Asset Photos

---

