

# SPECIFICATIONS



## 4.3 MW 2025 New MWM TCG2032V16 Natural Gas Generator Set

# 4.3 MW 2025 New MWM TCG2032V16 Natural Gas Generator Set

## Description

This natural gas generator set is a high-performance unit engineered for efficient, reliable, and environmentally friendly power generation. Built on MWM's long-standing expertise in gas engine technology, this generator is designed for continuous duty applications such as utilities, industrial facilities, and combined heat and power (CHP) plants. It delivers excellent electrical efficiency while maintaining low emissions, making it well-suited for both independent power production and grid support operations.

### KEY FEATURES:

- Rated electrical output of 4.3 MW
- Designed for continuous duty and baseload operation
- Modular configuration for flexible installation

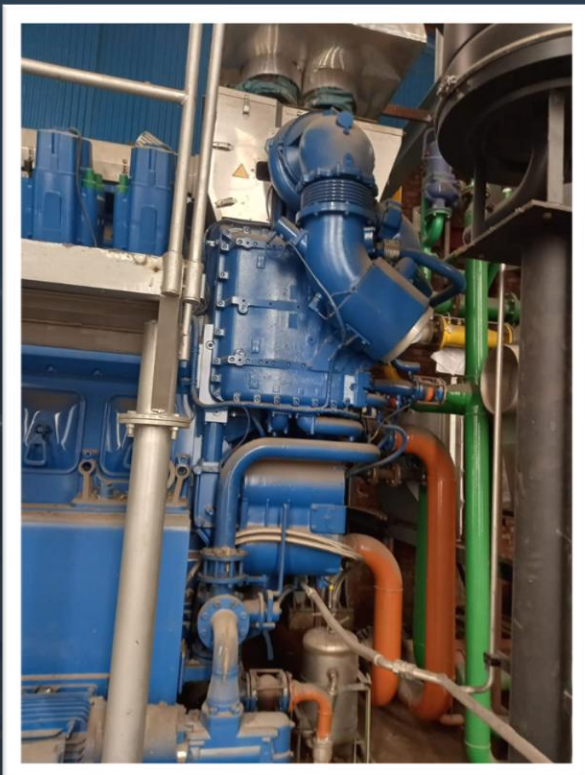
### ADVANTAGES

- Lower emissions profile supports regulatory compliance and sustainability goals
- Versatile design suitable for grid support, industrial, and CHP applications

Manufacturer	MWM
Model	TCG2032V16
Year	2022
Condition	New
Location	Asia
Qty Available	1 Unit
Category	Natural Gas Generators
Subcategory	1 – 9 MW
Stock Number	USP010859
Wattage	4.3 MW
Hours	Zero
Frequency	50 Hz
Fuel Type	Natural Gas
Voltage	11000 Volts
Balance of Plant Available? (BOP)	-



# Asset Photos



speed with excellence  
& extreme ownership



[www.uspeglobal.com](http://www.uspeglobal.com) | [Info@uspeglobal.com](mailto:Info@uspeglobal.com)

*Images may be representative, and actuals can be supplied upon request.*

# Asset Photos

---

