

# SPECIFICATIONS



Harnessing Energy for Life

## 1.5 MW 2016 New Caterpillar 3516C-HD Diesel Generator Set

# 1.5 MW 2016 New Caterpillar 3516C-HD Diesel Generator Set

## Description

This 1.5 MW diesel generator set, manufactured in 2016, is a new, unused unit designed for reliable prime or standby power applications in industrial, commercial, and utility environments. Built for continuous operation and robust performance, the unit is water-cooled and delivers stable electrical output at 60 Hz, 690 V, making it suitable for integration into existing power systems or as a standalone solution.

### KEY FEATURES:

- **Electrical Output:** 1.5 MW at 60 Hz, 690 V
- **Prime Power Configuration:** Designed for continuous-duty applications with high reliability.
- **Flexible Deployment:** Suitable for industrial, commercial, or utility applications.

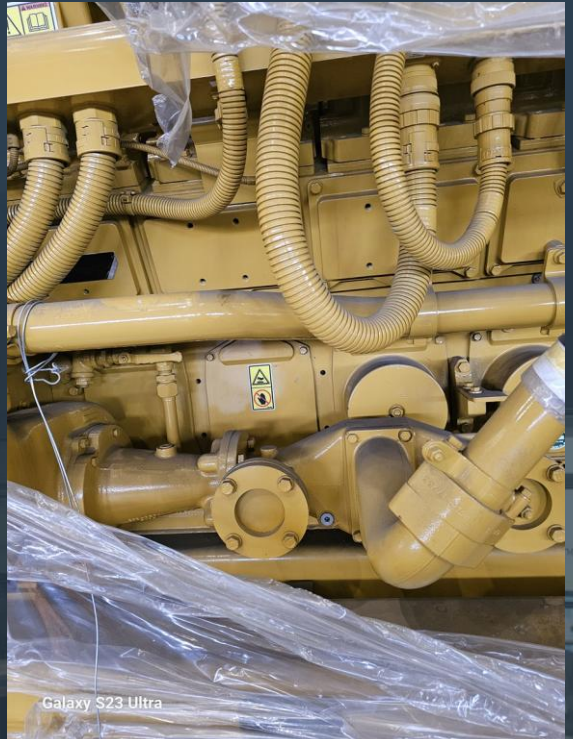
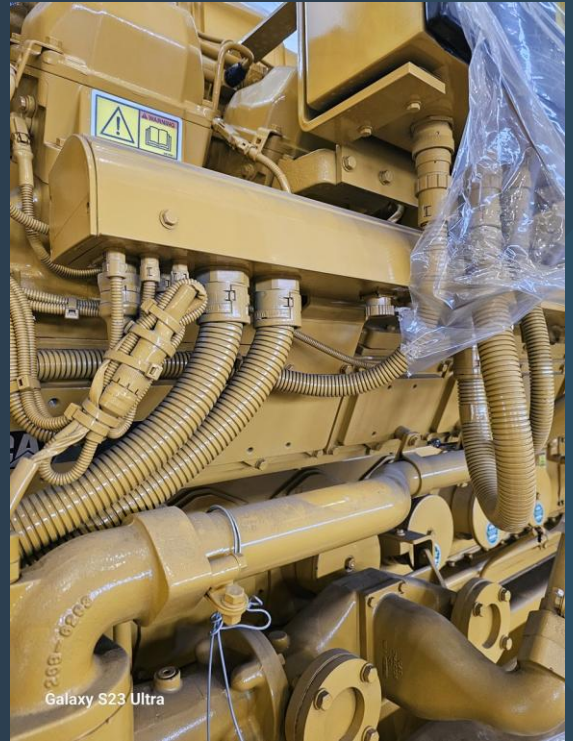
### ADVANTAGES

- **High Reliability:** Proven medium-speed design ensures long-term dependable operation.
- **Rapid Installation:** Compact design allows straightforward integration or site deployment.

Manufacturer	Caterpillar
Model	3516C-HD
Year	2016
Condition	New (Unused)
Location	Asia
Qty Available	5 Units
Category	Diesel Generators
Subcategory	1 – 9 MW
Stock Number	USP010937
Wattage	1.5 MW
Hours	Zero
Frequency	60 Hz
Fuel Type	Diesel
Voltage	690 Volts
Balance of Plant Available? (BOP)	-

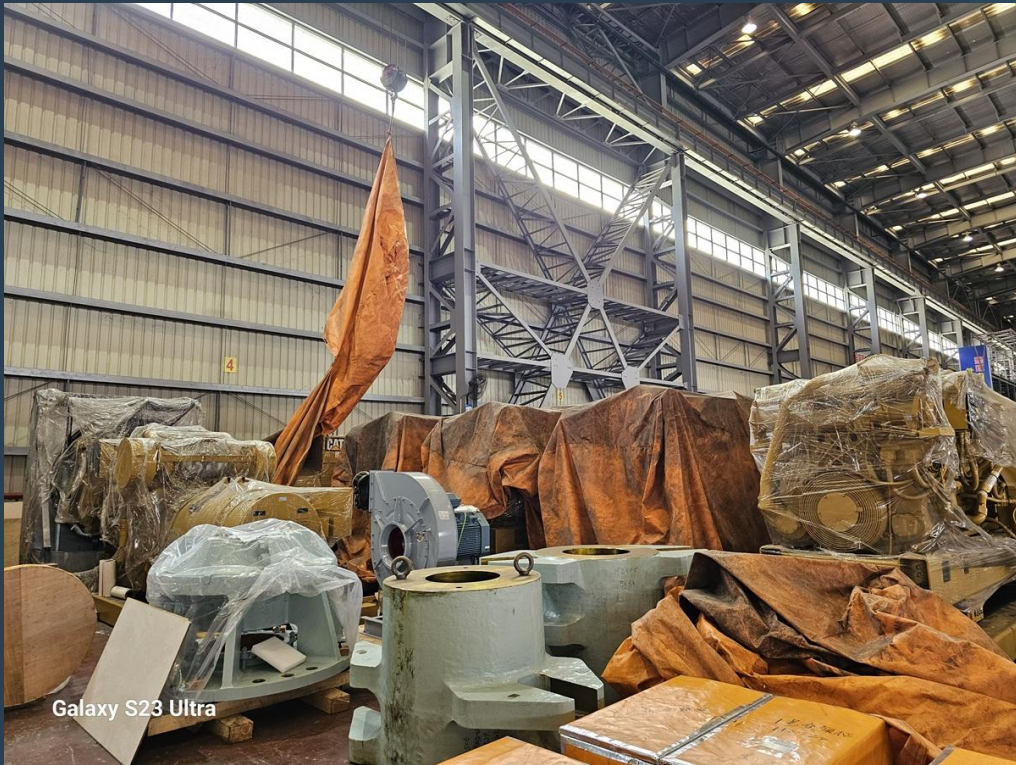


# Asset Photos





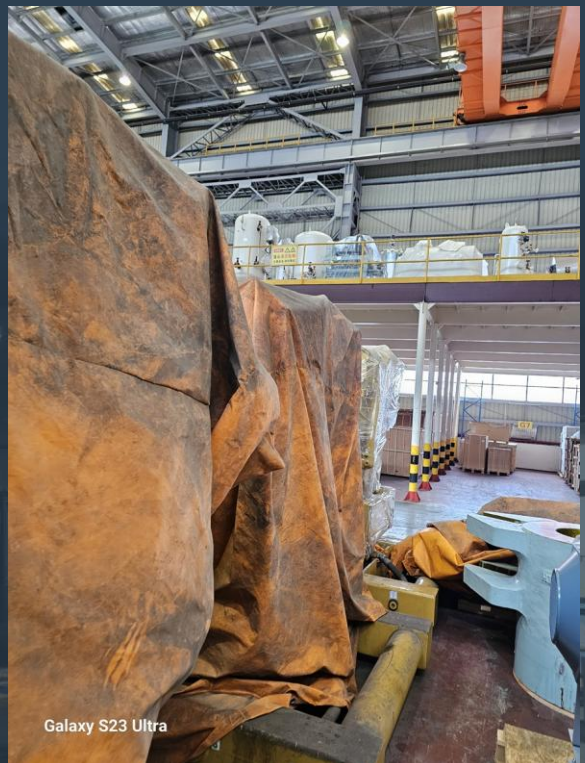
# Asset Photos



Galaxy S23 Ultra



Galaxy S23 Ultra



Galaxy S23 Ultra

