

15 MW 2018 New Kawasaki MIT-26 HFO/Diesel/Natural Gas
Turbine Power Plant



Harnessing Energy for Life

Description & Additional Notes

EXCLUSIVELY FROM USP&E!

USP&E is selling: 15 MW 2018 New Kawasaki MIT-26 HFO/Diesel/Natural Gas Turbine Power Plant

50 Hz; 1500 RPM; 6600 Volts; Phase 3

Units available: 3x

**Note that price is for the FULL PLANT!

Includes HFO Gas Turbine Engine Generator Sets!

If you are like us, you read every day about how thousands of fast growth companies struggle to find energy generation that is affordable, reliable and available for immediate shipping and installation on a turnkey basis from a company that really understands the complexities of integration of balance of plant and other site infrastructure.

At USP&E, we have been in business now for over 20 years and have offices in 9 countries. But more importantly, WE ARE OBSESSED WITH EACH CLIENTS JOURNEY TO ENERGY SUSTAINABILITY & RELIABILITY AND ARE DRIVEN TO GUIDE EACH CLIENT TO SUCCESSFUL INTEGRATION OF THE BEST IN CLASS TECHNOLOGIES.

This is important and a huge differentiating factor for our clients because USP&E isn't the hero of our story, you are. We will do everything possible to make sure you are successful, and we have over 20 years of satisfied clients and meaningful, long-term client engagements that prove this out. The potential delays related to permitting, land access, shipping, etc must be dealt with head-on and with urgency. We have helped hundreds of companies like yours for over 20 years.



Harnessing Energy for Life



Harnessing Energy for Life

Description & Additional Notes

The process is really simple:

1. Quick, 30 min Engineering/Design Meeting so we Can understand Your project goals, timelines and budgets. ✓
2. Scope of work and supply to match our plants to what you need. ✓
3. Work together to finalise commercial and technical aspects into a contract and move forward with the project. ✓

Please remember, USP&E is not just an equipment broker. We are a GUIDE to energy project excellence. We offer full Engineering, Procurement, Construction and long-term O&M in over 190 countries around the world in order to make sure our client projects are a RESOUNDING success.

Some of the companies we are currently working with include the City of Neom, Barrick Gold, SPACE-X, Firefinch Gold, Kurdistan MOE, Ivanhoe Mining, Boogertman Partners, and Molo Graphite.

At USP&E, we understand how most companies struggle to find energy generation that is affordable, reliable and available for immediate shipping and installation on a turnkey basis. Your partner must be a company that really understands the complexities of integration of balance of plant and other site infrastructure, and not just be a broker. Ideally, your partner offers complete O&M and warranty support services. This is what we have been doing for over 20 years.



Harnessing Energy for Life

Gas Turbine Engines (3 UNITS)

Kawasaki Heavy Industries, Ltd

- Model MIT-26
- Rated output 4347 KW 40 ° C
- Rotational speed 22000/1500 min-1
- Month of production 2018-2
- Kawasaki Heavy Industries, Ltd.
-

Hitachi

- Decelerator
- Model MPG160-23
- Reduction ratio 14.618
- Transmission power 4800KW
- Output rotational speed 1500 min-1
- Rated output 4000kW
- Voltage 6600v
- Frequency 50Hz
- gas turbine MIT-26
- Generator TAKL-SCKE
- Manufacturing date 2018-3
- Current 438A
- Number of phases 3 ϕ
- Height 3800 × width 3500 × depth 8500

Transformers (2 Units)

- Load tap switching transformer
- Standard JEC-220-2014
- Phase number 3
- Rated frequency 50Hz
- Cooling method ONAN / ONAF
- Rated Capacity (KVA) Primary 20000/22000 Secondary 20000/22000
- Rated voltage (V) primary 66000 secondary 6600
- Rated current (A) primary 175/192 secondary 1750/1925
- Test voltage value (KV) primary L1 350 AC 140 secondary L1 60 AC22
- Temperature rise limit
- Number of turns 65K Oil 60K
- 23T each in weight



Harnessing Energy for Life

More Information On The HFO Plant

- The key points of the gas turbine that drives the generator are as follows.
-
- (1)format Simple release cycle 1 axis type
- (2)Construction Consists of a centrifugal two-stage compressor, an axial flow four-stage turbine, a single-tube can combustor and a reduction gear
- (3)Output 4,347kw(40°C)
- (4)Rotational speed Turbine main shaft 22,000min⁻¹
- Output axis 1,500min⁻¹
- (5)Reduction gear Planetary + Parallel gear reducer
- (6)Starter motor Electric type
- (7)Fuel controller Electric type A heavy oil No. 1 (JIS K 2205)
- (8)Fuel used Oil type: Synthetic base oil (AERO SHELL ASTO-500)
- (9)Used lubricating oil Oil amount: 240L

Fuel property limit conditions

- It is usually available if you want a representative of A heavy oil to the supplier you plan to purchase
-
- 1. Dynamic viscosity (50 ° C): 2.0 to 2.8 mm² / s
- 2. Sulfur content: 0.5% wt or less
- 3. 10% residual oil residual carbon content: 0.55% wt or less
- 4. Density (15 ° C): 865 kg / mm³ or less



Harnessing Energy for Life

More Information On The HFO Plant

- The main points of the alternator are as follows.
- Format Protective type, free air flow type (IP22)
- Construction Horizontal axis type, rotating field type
- Rated capacity 5000kv
- Rated output 4000kw
- Rated voltage 6,600V
- Rated current 437A(reference)
- Rated power factor 0.8(delay)
- Rated continuous Continuous
- Frequency 50Hz



Harnessing Energy for Life

Specifications



Manufacturer	Kawasaki
Model	MIT-26
Year	2018
Condition	New
Location	Eastern Asia
Price	\$3,680,000
Category	HFO/Diesel/Natural Gas Generators
Subcategories	<ul style="list-style-type: none">• 10 - 99 MW
Stock Number	USP010208
Wattage	15 MW
Hours	Zero
Frequency	50 Hz
Fuel type	HFO
Voltage	6600
Balance of Plant Available? (BOP)	-

Asset Images



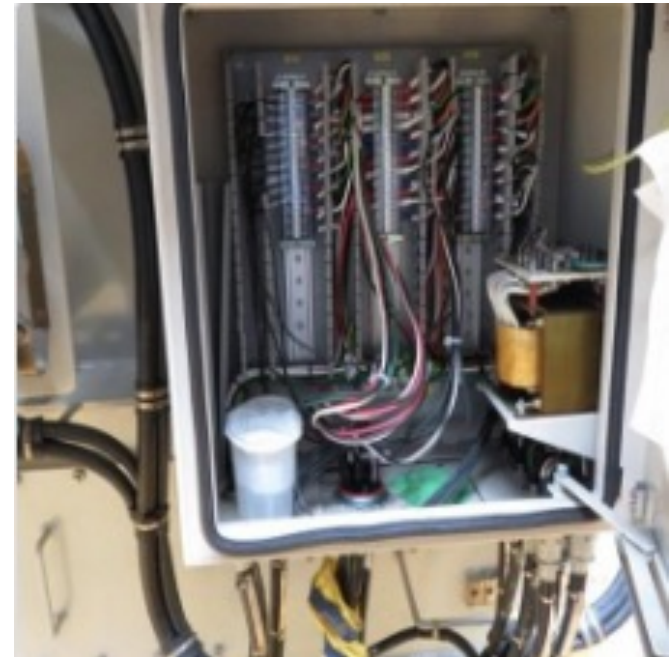
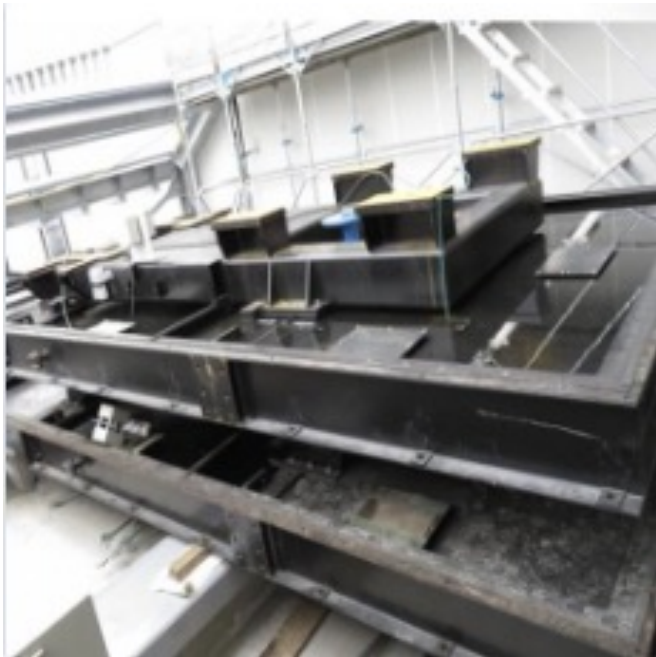
- Images may be representative, and actuals can be supplied upon request.

Asset Images



• Images may be representative, and actuals can be supplied upon request.

Asset Images



- Images may be representative, and actuals can be supplied upon request.

Asset Images



- Images may be representative, and actuals can be supplied upon request.

USp&e

Harnessing Energy for Life