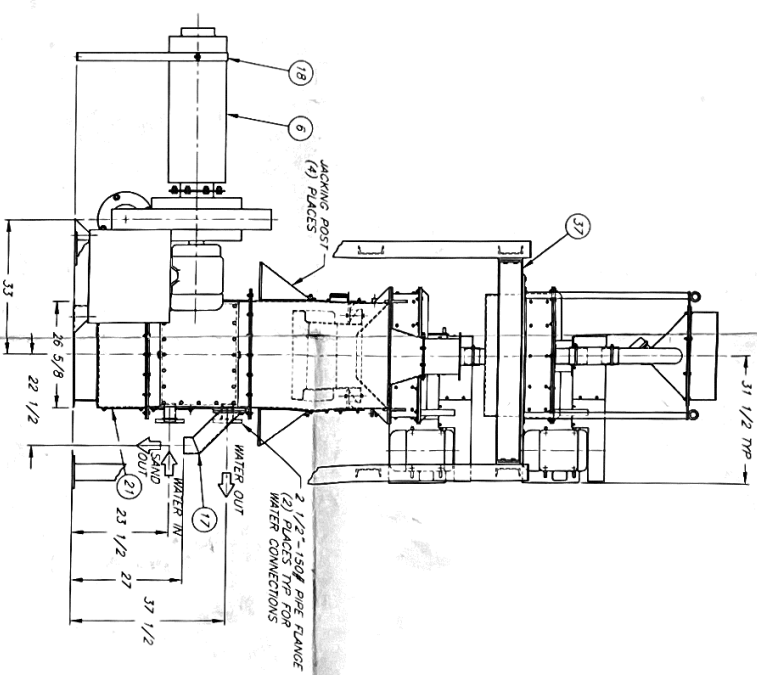
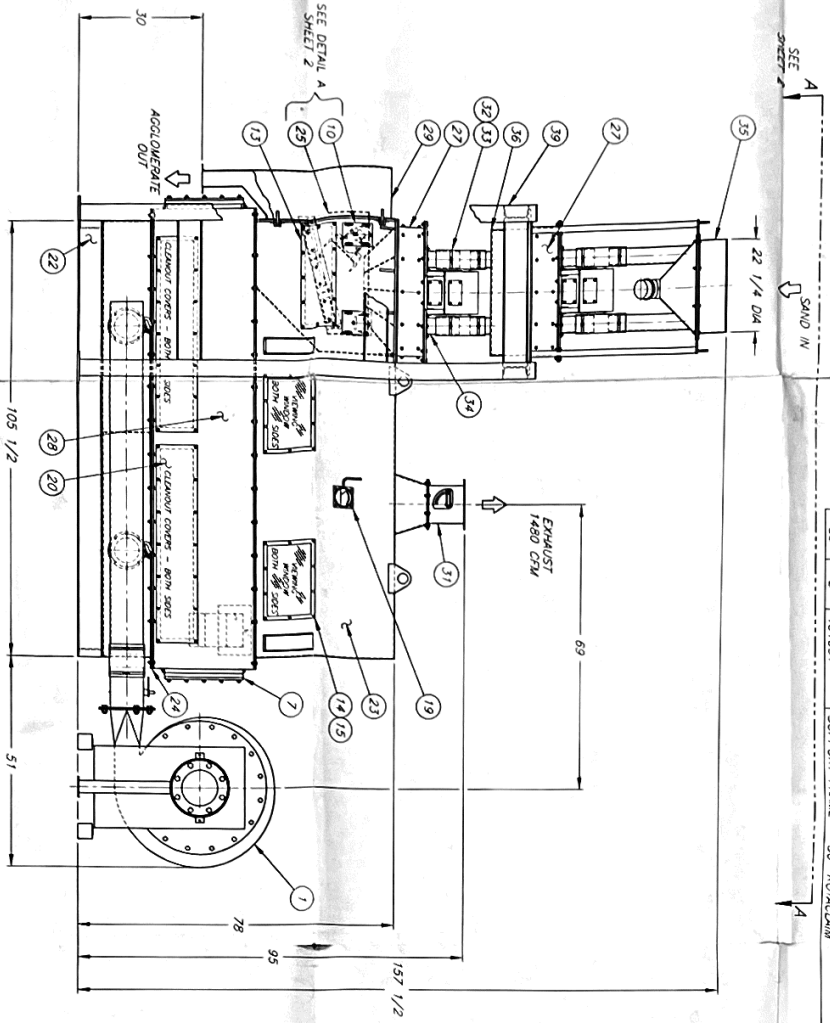


ITEM	QTY	PART NO.	DESCRIPTION
1	1	100208	PRESSURE BLOWER
2	1	100331	ELECTRIC VIBRATOR
3	2	13266-1	HOSE CLAMP - 2" - 1 1/2"
4	12 FT	13881-EPDM	CROWN BAR RUBBER-EPDM
5	4	14119-3	MARSHWELLLOW SPRING
6	1	14296-2	SILENCER-SIZE B
7	2	200349	GASKET
8	1	21828-11	SPARGER SCREEN
9	1	21922-7	FLEXIBLE CONNECTOR - 8" 10 x 8"
10	4	22018	LOCATING PIN BRACKET
11	8	22018-1	LOCATING PIN
12	6	22023	BALL CLAMP
13	2	22084-1	ACCESS COVER
14	2	22085-1	WINDOW
15	4	22085-1	WINDOW FRAME
16	1	300241	MANIFOLD
17	1	300245	SAND DISCHARGE TUBE
18	1	31930-10	SILENCER SUPPORT
19	1	31930	VACUUM GAUGE ASSY

ITEM	QTY	PART NO.	DESCRIPTION
20	4	32957	CLEAN OUT COVER
21	2	32958	CLEAN OUT COVER
22	1	400357	LOWER BODY
23	1	400358	PLENUM
24	1	400361	JET PLATE (see Drawing PD-9975)
25	1	400419	SPARGER SCREEN
26	1	400700	8" SINGLE FLANGE BUTTERFLY VALVE
27	2	400665	30" ROUND ROTACUAM ASSY - 60 Hz
28	1	400972	HEAT EXCHANGER
29	1	400982	AGGLOMERATE DOOR
30	2	400983	6" DOUBLE FLANGE BUTTERFLY VALVE
31	1	400984	9" DOUBLE FLANGE BUTTERFLY VALVE
32	4	13266-2	HOSE CLAMP - 2" - 1 1/2"
33	2	21922-8	FLEXIBLE CONNECTOR - 4" 10 x 12
34	2	22942	HOPPER ANLET TUBE
35	1	400986	HOPPER ASSY - 30" ROTACUAM
36	1	43283-1	SURGE HOPPER - 30" ROTACUAM
37	2	300352	PLATE SUPPORT - 30" ROTACUAM
38	2	300353	MOONING PLATE - 30" ROTACUAM
39	2	401001	SUPPORT FRAME - 30" ROTACUAM



NOTES: ALL DIMENSIONS ARE IN INCHES

REVISIONS	DATE	BY	APP

Dependable Foundry Equipment Company
Redford-Carver Foundry Products Company

REDFORD-CARVER

10000
10000

No warranty, including the principle of design, is made by the manufacturer of this equipment. The user is advised that it is not to be used for any purpose other than that for which it was designed. The manufacturer is not responsible for any damage to property or equipment caused by the use of this equipment in any manner other than that for which it was designed.

LOCAL TOLERANCES UNLESS OTHERWISE SPECIFIED	SCALE 1/16" = 1"
DIMENSIONS ± 1/64"	DRAWN & APPROVED ASSIGNED: L. HANSEN DATE: 7-7-98
POSITIONS ± 1/32"	
DIAMETERS ± 0.005"	
ANGLES ± 0.05°	

DESCRIPTION: COOLER-CLASSIFIER ASSEMBLY - C/C 2

DWG NO: 400981

SHT 1 OF 2