

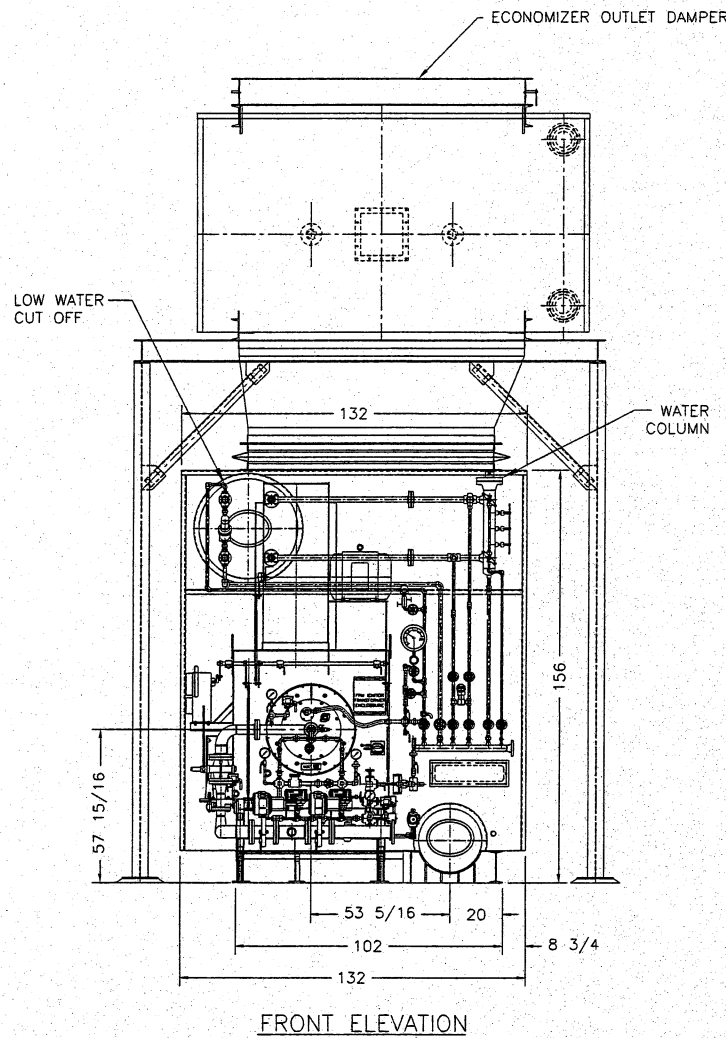
BOILER DATA

MODEL NO. 75-DS-300
 STEAM CAPACITY 75,000 LBS/HR.
 DESIGN PRESSURE 300 PSIG
 OPERATING PRESSURE 250 PSIG
 FUEL NATURAL GAS/ NO.2 FUEL OIL
 FEEDWATER TEMP 212° F

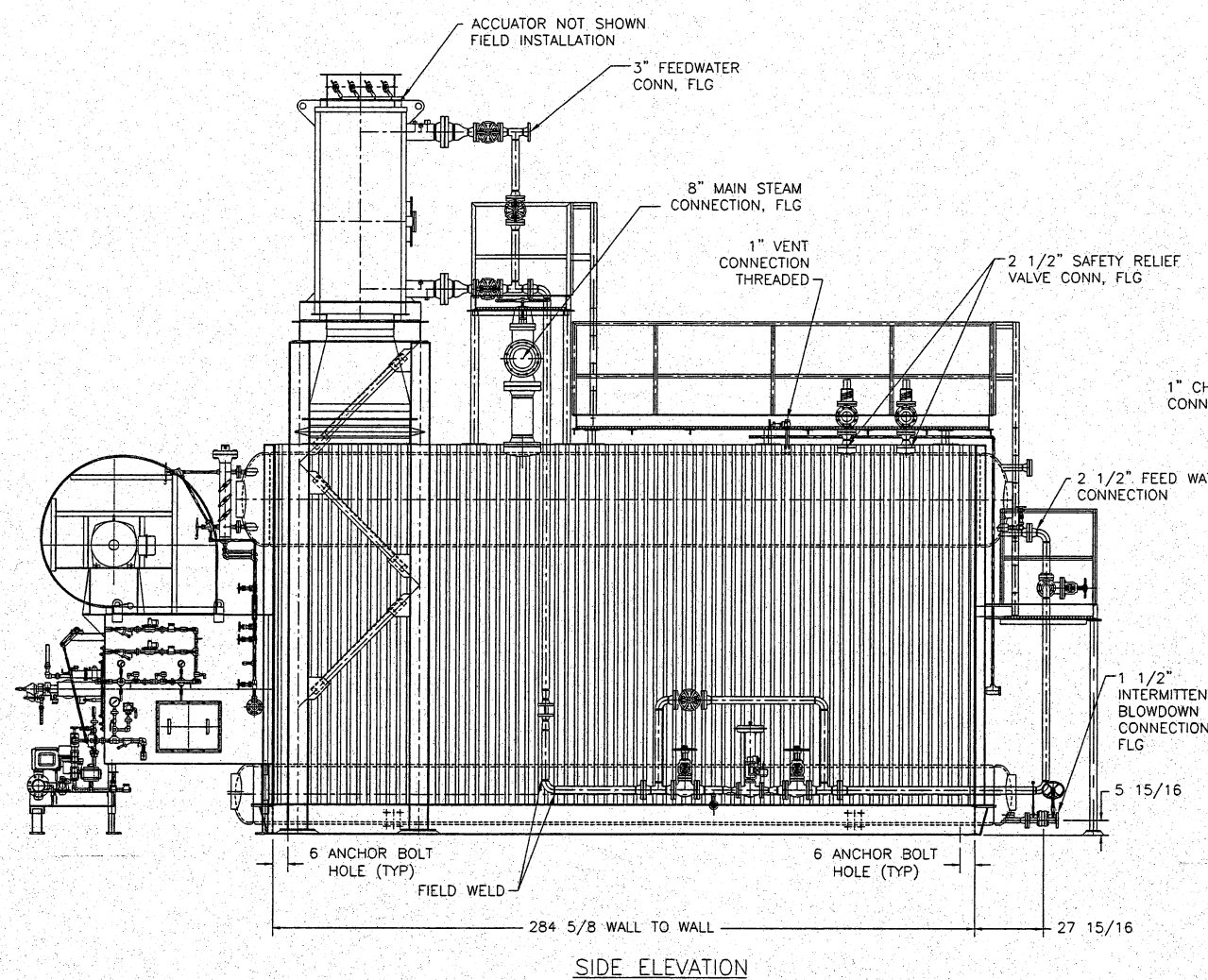
ASME HEATING SURFACE
 RADIANT: 725 SQ. FT
 CONVECTION: 5,048 SQ. FT
 TOTAL: 5,733 SQ. FT
 FURNACE VOLUME: 1,116 CU. FT

NOTES:

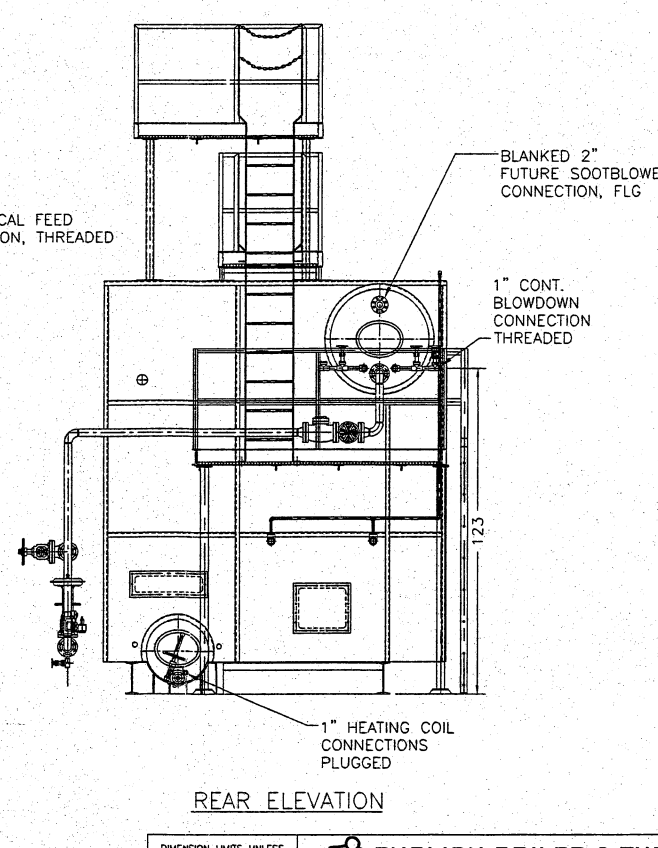
- DESIGN AND FABRICATED ACCORDING TO ASME BOILER AND PRESSURE VESSEL CODE, SECTION I, 2007 EDITION.
- SEE DRAWING 28-020-104 FOR PIPING & INSTRUMENTATION DETAILS.
- SEE DRAWING 28-020-105 FOR FOUNDATION & LOADING DETAILS
- 1 1/2" GROUTING RECOMMENDED UNDER ALL SUPPORT STEEL COLUMNS, TYP.



FRONT ELEVATION



SIDE ELEVATION



REAR ELEVATION

ENGLISH BOILER & TUBE, INC.
 2890 SEVEN HILLS BLVD. - RICHMOND, VA. 23231

DRAWING NAME: GENERAL ARRANGEMENT BOILER #2

CONTRACTOR: ALTIVITY PACKAGING

SCALE: 3/8" = 1'

DATE: 5/1/08

SIZE: 75-DS-300

DRAWING NUMBER: 28-020-101 #2

REV. # 5

REVISION #	DRAWN	CHECK	APPROVED	REVISION #	TITLE CHANGE	DRAWN	CHECK	APPROVED	REVISION #	TITLE CHANGE	DRAWN	CHECK	APPROVED	REVISION #	TITLE CHANGE	DRAWN	CHECK	APPROVED	REVISION #	TITLE CHANGE	
	CCB			5		CCB			3	ADDED ECONOMIZER DAMPER	CCB			1	GENERAL REVISION	CCB					
									4	REVISED TOP PLATFORM	CCB			2	GENERAL REVISION	SI					