



EQUIPMENT SHOWCASE

FEATURED LISTING:
WEINIG HYDROMAT MOULDER

#20169A

MARCH 2024



PHONE: (636) 916-5200
FAX: (636) 925-2877
TOLL FREE: (888) 916-5200
CELL: (314) 580-4245
marc@industrialcapitalgroup.com
www.industrialcapitalgroup.com

INDUSTRIAL CAPITAL
FINANCING AVAILABLE
GROUP, LLC
COMMERCIAL FINANCE / EQUIPMENT LEASING
214 ELM ST SUITE 103
WASHINGTON, MO 63090
MARC J. BOYER - PRESIDENT

YOUR FIRST SOURCE FOR SAWMILL EQUIPMENT!
Showcase Equipment | 260-633-4047 | sales@ShowcaseEquipment.us

#9085



#9126



#3072



#7108

SEE INSIDE FOR FULL EQUIPMENT LINEUP

#2088

“Marching into progress, sawmill crew, feeling the thrill! Is it time to upgrade, or get a new mill? Share your sawdust dreams, let innovation fill!”



Rymin Simon



Sawmill Sam

“As you progress, explore new layouts and modernized equipment for enhanced efficiency. Consider upgrades and rebuilt equipment to innovate your sawmill operations.”

CHECK OUT OUR PREMIUM PAGE SECTION!



Upcoming Auctions



February 14/IronRing Online & phone bidding only



March 14/Appalachian Equipment Auction Jonesville, NC/Bid Book Deadline-February 20



February 23/Michiana Equipment Auction Middlebury, IN



March 20/IronRing Online & phone bidding only/Bid Book Deadline-February 27

Accepting
Consignments!

March 22/Lake Erie Equipment Auction Middlefield, OH/Bid Book Deadline-February 27

Accepting
Consignments!

May 24/Green Tree Hardwoods Marion, MI/Bid Book Deadline-May 7

Accepting
Consignments!

Sell with Bright Star to enjoy:

1. Award-winning marketing, including the exclusive Bid Book
2. Absolute Integrity
3. Easy Process

Our Guarantee:

If you don't think we did everything in our power to achieve market value for your equipment, you pay NO commission.

Thinking of selling your sawmill?

- Call Eugene - 574-622-8953

Consigning to IronRing?

- Call Myron - 574-742-4546



Lumber Tiger Resaw -
Sold for \$135,000

Formerly Kurtz Sawmill -
1.25.24



2019 Woodpecker
Junior Nailing Machine
with Stacker -
Sold for \$70,000

January IronRing-
1.17.24

BRIGHT STAR

— AUCTIONS —



AC32100007 574.825.0704

See brightstarauctions.com for more information...

Table of Contents	Page #
Band Sawmills	4
Circle Sawmills	4,5
Band Resaws	5,6
Gang Saws	6
Edgers	6-8
Debarkers	8,9
Chippers ~ Hogs ~ Grinders	9-11
Log Turners	11
Decks ~ Conveyors ~ Log Troughs ~ Carts	11-19
Blowers ~ Sawdust Removal ~ Cyclones ~ Barn Sweeps	19-22
Drying ~ Heating	22
Power Units ~ Gensets ~ Motors	22,23
Loaders ~ Forklifts ~ Skidsteers ~ Trailers ~ Excavating Equipment	23
Pallet Manufacturing ~ Dedusters	23
Sharpening	24
Chopsaws ~ End Trimmers	24,25
Air Compressors ~ Hydraulic Units	25-29
Scagg Mills	29
Miscellaneous	29-32

**Your Business
would look
good here!**

**Starting
at \$400 today**

**Beat the deadline!
March 1st**

Gaylord (advertising) - 574.536.1646

**WE WANT TO
HEAR FROM YOU!**

We're changing our name from



TO

???

**HOW YOU
CAN VOTE**

VISIT OUR BOOTH IN
MT. HOPE SHOWCASE
#1308-1310

WE NEED YOUR INPUT! Please stop by our booth Feb. 15-17 to vote for your favorite. Our new name will be featured in the April 2024 catalog.



1049 **\$40,000.00**
SALEM BAND HEADRIG
 6', top wheel is 1 1/2" thick, steel slat
 off-bearing belt, air-strain, this unit is in
 good working condition
260-633-4047



1050 **\$15,000.00**
SALEM BAND HEADRIG
 6', top wheel is 1" thick, air strain, was used
 for a line-bar resaw, good working condition
260-633-4047



**EQUIPMENT
 SHOWCASE**



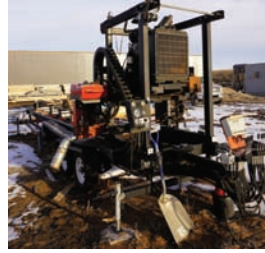
1125A **\$30,000. OBO**
LT40 WOOD - MIZER BANDMILL
 2007 around 8100 hr. 38 hp Kohler gas engine,
 SUPER HYD. Accu- setworks, 1 1/2" bands,
 22" x 18' long cutting capacity, trailer package
717 283 8313



**EQUIPMENT
 SHOWCASE**



1129A **\$17500. OBO**
SMICKSBURG UPRIGHT BANDMILL
 30" heavy duty band wheels, 2" band, / RH, 4 HB,
 14' handset Frick carriage, 40' track, 3 hand dogs,
 <all steel> band sharpener - setter & roller w/ a
 honda gas motor, < in good running condition >
330 390 9657



1130A **\$45,000.00**
TIMBERKING 2200 BANDMILL
 2011, 4500 hr., 60 hp. John Deere diesel, hydraulic, log lift,
 computerized setworks, new belt & blades, lot of bearings
 are replaced, 20-30 blades need to be sharpened, Cat Claw
 band sharpener & setter, (by Cooks) is cutting logs
719 989 8850



1131A **\$25,000.00**
POTABLE COOKS MP32 BANDMILL
 2010, 24"x 18' log capacity, 29 hp Kohler
 engine, hydraulic, (no log turner) manual
 setworks, in good condition
765 344 1134



2052 **\$20,000.00**
RENCO CIRCLE MILL
 LH, 4 HB, opens to 36 in, carriage is 20 ft.
 in length, electric setworks, includes track/
 frame, husk, driver, etc. good condition
260-633-4047



2062 **\$15,000.00**
CARRIAGE
 Cleereman 3 head-block, 36" carriage,
 no set-works, good condition
260-633-4047



2063 **\$35,000.00**
CIRCLE MILL
 Cleereman 3 head-block, 36" carriage, Timber
 Tiger electric set-works, includes track/ drive/
 60" husk/ cab and all controls,
 in good working condition
260-633-4047



2065 **\$7,500.00**
TRACK- FRAME
 carriage track/ frame for HMC model;
 AC-40 carriage, good condition
260-633-4047



**Call or Email
 Gaylord Yoder for details
 574-536-1646
 ads@showcaseequipment.us**



2068
CIRCLE MILL
 Hurdle 3 head-block carriage, includes
 complete mill package, track/frame/ drive/
 cab and all controls, good working condition
260-633-4047



2072 **\$10,000.00**
MEADOWS MILL
 Meadows 4 headblock carriage,
 Model; #3 DELUXE,
 good working condition
 260-633-4047



2076 **\$22,500.00**
CIRCLE MILL
 Cleereman 3 head-block, Model;36, SN;
 115, air set-works, includes track-frame and
 cable drum, working condition
 260-633-4047



2078 **\$42,500.00**
CLEEREMAN 4 HB MILL
 Cleereman 4 head block , Model 40, air over air
 setworks, includes cab/track-frame/ carriage drive
 and all controls, in good working condition
 260-633-4047



2080 **\$37,500.00**
HMC 4 HEAD BLOCK CARRIAGE
 includes carriage track & frame, AC carriage
 drive, Mellott Operator cab, electric setworks,
 this mill is in good operating condition. Mod
 #AC40BD, Serial #565-94
 260-633-4047



2083
CLEEREMAN 363+CARRIAGE
 SN: 36-307, MN: 36, 3 head block, air
 dogs, tapers, setworks, 16' long, 50" wide
 center to center wheels
 260-633-4047



2086 **\$12,500.00**
CIRCLE SAWMILL
 Frick 4 head-block carriage, only 2 head-blocks
 have dogs, electric set-works, includes husk,
 track/ frame, drive and all controls,
 good working condition
 260-633-4047



2087 **\$17,500.00**
HMC 4 HEAD BLOCK CARRIAGE
 HMC HC-40, serial #330-1982, 4 head-block carriage,
 electric set-works, air powered dogs, 40' long track,
 was used with band head, includes cab, controls and log turner,
 complete unit ready to operate and in good condition
 260-633-4047



2088 **\$37,500.00**
CLEEREMAN CARRIAGE
 Cleereman 3 head-block carriage, Silva-Tech
 computerized set-works, 48' long track, includes
 cab and all controls, good working condition
 260-633-4047



2089 **\$17,500.00**
CIRCLE MILL
 HMC AC-40 4 head-block carriage, Silva-Tech set-works
 with spare parts, air dogs, husk has 48" dia bottom blade and
 36" dia top saw, includes complete mill package including
 42" chain log turner and nose skids, working condition
 260-633-4047



2090 **\$7,500.00**
CIRCLE SAW HUSK
 Circle saw husk, used with a Corinth mill,
 56" bottom blade-36" dia top blade, 150 hp 1180
 rpm's electric drive, air clutch for top saw,
 off-bearing belt, excellent condition
 260-633-4047



2087A **CALL FOR PRICING**
A COMPLETE HELLE CIRCLE MILL
 4 HB carriage, RH, vertical edger, log deck w/stop &
 unloaders, green chain, rollcase, hydraulic unit, cab,
 80' barn sweep, you have free load out, call for more
 details, she is ready to load
 315 815 4241



3069 **\$95,000.00**
BREWCO RESAW
 The Wolf Model; B-1600, SN; BBH0479, includes
 complete run-around system and all controls, price
 includes complete rebuild, call for customizing
 options, nice heavy duty unit
 260-633-4047



3072 **\$55,000.00**
5 HEAD RESAW
 Baker 5 head resaw, electric drive, includes return belt and turn tables on both ends, good working condition
260-633-4047



3078 **\$16,625.00**
RESAW
260-633-4047



3079 **\$20,750.00**
BAND RESAW
 single head resaw, 6" x12" cutting capacity, 28" dia band wheels, fast precision adjustment w/ mechanical counter, electric drive with VFD for feed belt, plug/play ready heavy duty construction, has return belt, BRAND NEW!
260-633-4047



3080 **\$27,500.00**
RESAW
 Pendu single head resaw, 16" wide capacity, 40 hp electric drive, 36" dia wheels, very good condition
260-633-4047



3081 **\$8,500.00**
RESAW RUN-AROUND
 Morgan complete run-around system for single head resaw, 8' wide x 25' long over-all, 14" wide rollers, hyd drive, hoses will need to be replaced, working condition
260-633-4047



3082 **\$11,500.00**
RESAW
 Baker single head resaw, has tilting infeed belt w/ digital display, electric drive, includes spare parts/ blades, excellent condition
260-633-4047



3077A **\$42000. OBO**
BBR-O 3 HEAD BAKER RESAW
 sn# 97-2137, 28" band wheels, 12" cutting width, manual up & down, airbag blade tention, air cylinder press rollers, lineshaft ready, return belt hyd. driven, there are electric motor available
765 855 2848



3079A **\$5,000.00**
SINGLE HEAD MORGAN RESAW
 this is an older machine but works good, reg. rubber feed belt, all manual, lineshaft ready, a RETURN belt
812 592 4398



3080A **\$14,000.00**
2 HEAD MORGAN RESAW
 all manual, a reg. rubber feed belt, lineshaft ready, (no return belt) in good condition
812 592 4398



4026
CORLEY GANG EDGER
 8" capacity, includes infeed/outfeed, electric drive, THIS UNIT NEEDS TO BE REBUILT, CALL FOR OPTIONS!!
260-633-4047



4035 **\$15,000.00**
GANG SAW
 Morgan single arbor gang saw, capacity 12" wide x 5 1/2" thick, 75 hp electric drive on arbor, feed rolls are hyd drive, includes spare spacers, good condition and ready to work
260-633-4047



5086 **\$8,500.00**
MEADOWS EDGER
 4"x36" capacity, 2 blades, 1 movable, blade moves with hyd. includes infeed and 11' long tailing belt, good working condition
260-633-4047



5089 **\$15,000.00**
SHURMAN GANG EDGER
 6"x42" wide overall, includes infeed and outfeed rollers, working condition
 260-633-4047



5090 **\$30,000.00**
FRONTLINE EDGER
 4"x36" capacity, Hyd. motor on the drive, set up for a tailing belt, excellent condition
 260-633-4047



5093 **\$8,500.00**
BREWCO EDGER
 8"x20" wide capacity, set up with stationary blades, 50 hp. electric drive, includes infeed rollers, good condition
 260-633-4047



5097 **\$7,500.00**
VERTICAL EDGER
 3 blades, 2 movable, 50hp electric drive, 6" capacity, good condition
 260-633-4047



5100 **\$3,500.00**
VERTICAL EDGER
 2 blades, hyd. cylinder for blade movement, in good condition
 260-633-4047



5103 **\$75,000.00**
TIERNEY GANG SAW/EDGER
 6" capacity gang edger, partially rebuilt, call to customize to your specs
 260-633-4047



5107 **\$12,500.00**
VERTICAL EDGER
 3 blades, 6" capacity, electric drive, good condition
 260-633-4047



5111 **\$15,000.00**
CORNELL EDGER
 6" x 42" capacity, MN: HE42, SN: 703-10-81, single arbor, (4) 19" saws, 2 movable blades, 8" infeed, 8' powered outfeed, electric drive, comes w/ spare spacers, saws and laser lights
 260-633-4047



5112 **\$52,500.00**
CORNELL GANG EDGER
 6" x36" capacity, infeed/outfeed, 1 movable blade, this unit is completely rebuilt and ready for production comes with a 6 month warranty , LIKE NEW CONDITION
 260-633-4047



5114 **\$9,500.00**
COOK EDGER
 Model:36EZTD, SN: 42, 5" x 21' tailing belt outfeed, 38" x 9' infeed rolls, 6" x 36" infeed cap, control panel, manual blade set, (2) 20" blades both are adjustable, electric drive, good heavy duty older unit
 260-633-4047



5115 **\$7,500.00**
MEADOWS EDGER
 Meadows 4" x 36" capacity edger, infeed/outfeed, this edger is in good condition and ready for production
 260-633-4047



5116 **\$12,500.00**
BOARD EDGER
 Cornell 4" thick x 27" wide capacity, 1 stationary-1 movable blade, includes infeed, this edger is in good working condition
 260-633-4047



5118 **\$10,000.00**
EDGER
 4" x 30" wide capacity, 2 movable blades, includes BRAND NEW ARBOR, very good condition
260-633-4047



5119 **\$7,500.00**
EDGER
 Edmiston 4" thick x 28" wide capacity, 2 movable blades, includes infeed/outfeed, hyd movable blades, good working condition
260-633-4047



5120 **\$10,500.00**
VERTICAL EDGER
 Miner 3 blade vertical edger, 50 hp electric drive, self-contained hyd unit, includes various spare parts, very good condition
260-633-4047



5082A **\$8,500.00**
BE - 0 BAKER EDGER
 3 1/2 x 20" opening, 2 split blades 1 movable, hyd. power infeed & outfeed belts, 5' in & 5' out, hyd pump & tank, lineshaft ready, excellent condition
608 375 2430



6024 **\$25,000.00**
HMC DEBARKER
 Rosser head, slant track, hyd. drive on the head, in working condition, CALL FOR REBUILDING OPTIONS ON THIS MACHINE
260-633-4047



6025 **\$70,000.00**
NICHOLSON DEBARKER
 27" 6 arm, includes lots of new parts, Good Working Condition
260-633-4047



6030 **\$25,000.00**
HMC DEBARKER
 rosser head, slant track, working condition
260-633-4047



6031 **\$30,000.00**
HMC DEBARKER
 rosser head style, all hyd. drive, 36" dia. log capacity x 12' long, very good condition
260-633-4047



6033 **\$25,000.00**
RING DEBARKER
 Alco ring type debarker, electric drive, working condition
260-633-4047



6036 **\$25,000.00**
HMC DEBARKER
 rosserhead style, in working condition
260-633-4047



6042 **\$22,500.00**
RING DEBARKER
 Valone Kone ring debarker, electric drive, includes infeed/outfeed, working condition
260-633-4047



6043 **\$22,500.00**
DEBARKER
 Morbark 628 debarker, electric drive, includes operator cab and all controls, very good condition
260-633-4047



6044 **\$32,500.00**
DEBARKER
 Mellott roller-head debarker, electric drive, hyd cylinder for head up-down, recently in production and in good operating condition
260-633-4047



Sell your equipment fast for cash!
 Call or Email
Gaylord Yoder for details
574-536-1646
ads@showcaseequipment.us



7085 **\$6,500.00**
FULGHUM SHAKER SCREEN
 5' X 5' screen, electric drive, very good working condition
260-633-4047



7093 **\$10,000.00**
FULGHUM SHAKER SCREEN
 8' x 8' screen, electric drive, includes the chip cyclone, good condition
260-633-4047



7094 **\$6,500.00**
FULGHUM SHAKER SCREEN
 8' X 8' screen, electric drive, working condition, CALL FOR REBUILDING OPTIONS
260-633-4047



7107 **\$15,000.00**
JEFFREY HAMMER MILL
 hammer hog, top feed, good working condition
260-633-4047



7108 **\$47,500.00**
ROTOCHOPPER SM24E WASTE GRINDER
 waste grinder, 24" wide infeed belt, 125 hp electric drive, good working condition
260-633-4047



7109 **\$12,500.00**
PRECISION CHIPPER
 48" dia. 6 knife wheel with 3 blocked, bottom discharge, good condition
260-633-4047



7111 **\$17,500.00**
PRECISION CHIPPER
 66" dia. 6 knife, side/bottom discharge, good working condition
260-633-4047



7115
CHIPPER
 Precision 58" dia, 6 knives, should be rebuilt, call for options
260-633-4047



7119 **\$15,000.00**
CHIPPER
 60" dia, 4 Knives, top discharge, good working condition
260-633-4047



7120 **\$12,500.00**
SHAKER SCREEN
 Model: 8X8 screen, SN: FIR-953, includes 6' cyclone w/pipe to chipper, good condition
260-633-4047



7121 **\$10,000.00**
GRINDER
 Cresswood style, 4" thick x 32" wide capacity, electric drive on feed rolls, complete unit ready for production
260-633-4047



7127 **\$15,000.00**
FULGHUM CHIPPER
 Fulghum 6 knife, 60" dia, top discharge, includes new knives, knife holders, and anvils in very good condition
260-633-4047



7130 **\$17,500.00**
MONTGOMERY WASTE GRINDER
 26" top feed waste grinder, bottom discharge, good condition and ready for production
260-633-4047



7133 **\$4,500.00**
WASTE GRINDER
 Jay-Bee hammer mill/ waste grinder, 13" x 19" inlet size, no power, good condition
260-633-4047



7134 **\$5,500.00**
WASTE GRINDER
 Roberts hammer mill/ waste grinder, top feed, 60 hp electric drive, 3600 rpm's, good working condition
260-633-4047



7135 **\$17,500.00**
MORBARK CHIPPER/ SYSTEM
 Morbark 48" dia 3 knife chipper, Fulghum 5' x 5' shaker screen w/ cyclone, electric drive on shaker, complete package and in good working condition
260-633-4047



7137 **\$12,500.00**
CHIPPER
 Precision 48" dia chipper, 6 knife- 3 are blocked, top discharge, working condition
260-633-4047



7138 **\$15,000.00**
CHIPPER
 Fulghum 6 knife chipper, 60" dia, top discharge, working condition
260-633-4047



7140 **\$15,000.00**
CHIP-PAC
 Morbark 48" dia chipper, complete chip-pac, shows some wear but in working condition
260-633-4047

Sell your equipment fast for cash!

Call or Email
 Gaylord Yoder for details
 574-536-1646
 ads@showcaseequipment.us



7142 **\$49,500.00**
CHIPPER
 Precision 58" dia chipper, 6 knives w/ 3 blocked, before and after pics, COMPLETELY REBUILT AND COMES WITH A WARRANTY!
260-633-4047



7143 **\$5,250.00**
SHAKER SCREEN
 Morbark shaker screen for a 58" dia chipper, good working condition
260-633-4047



7065A **\$2250. OBO SHARPENER / \$12000. OBO CHIPPER**
BC1000 XL VERMEER CHIPPER / BMS 250 WOOD-MIZER SHARPENER & SETTER
 12" Vermeer chipper w/ a Cummins diesel to power in very good condition, / the Wood-Mizer band sharpener & setter w/ electric motor & serval grinding stone in very good condition, call for this
610 273 7826



8026 **\$4,500.00**
MELLOTT LOG TURNER
 48 in. Hyd. drive, GOOD CONDITION
260-633-4047



8027 **\$6,500.00**
CORLEY BAR TURNER
 48" bar turner, very condition
260-633-4047



8034 **\$4,000.00**
SERING BAR TURNER
 48" long, bar type, good condition
260-633-4047



8047 **\$6,250.00**
LOG TURNER
 48" chain turner, hyd drive, good condition
260-633-4047



8049 **\$2,750.00**
LOG TURNER
 36" chain turner, hyd drive, good condition
260-633-4047



8051 **\$2,250.00**
LOG TURNER
 Meadows 42" log turner, hyd drive, working condition
260-633-4047



8052 **\$2,750.00**
LOG TURNER
 Meadows 36" chain type log turner, hyd drive, working condition
260-633-4047



9001 **\$3,000.00**
VIBRATING CONVEYOR
 Webster 24" wide pan, 10' drive section, good condition
260-633-4047



9007 **\$7,500.00**
BELT CONVEYOR
 26" wide x 95' long, approx 6" sides, electric drive, good condition
260-633-4047



9009 **\$12,000.00**
VIBRATING CONVEYOR
 35' long, 18" pan, 8" sides, electric drive, includes chipper feed chute, good condition
260-633-4047



9012 **\$1,750.00**
BELT CONVEYOR
 20" wide x 20' long, 7" sides, electric drive, working condition
260-633-4047



9018 **\$4,000.00**
TRANSFER DECK
 5 strand, 13' wide x 18' 6" long, H78 chain, electric drive, air cylinders on pop up board stop, good condition
260-633-4047



9020 **\$8,500.00**
UNSCRAMBLER
 4 strand, 33" slats on each strand, electric drive, unit is 80" tall, good condition
260-633-4047



9023 **\$14,500.00**
VIBRATING CONVEYOR
 Synco Shear, SN:C2521-1, balanced vibrating conveyor, electric drive, 20" pan x 47' long, 14" tall sides, includes fiberglass section and chipper infeed, good condition
260-633-4047



9024 **\$6,500.00**
CHAIN CONVEYOR
 15" ladder back chain, 24" pan, 16" sides, 32" x 53' electric drive, good condition
260-633-4047



9025 **\$8,500.00**
PADDLE CHAIN CONVEYOR
 3" x 13" paddles, 16" pan, 15" sides, electric drive, 20" x 68' long, good condition
260-633-4047



9026 **\$4,500.00**
VIBRATING CONVEYOR
 Fulghum, 18" wide x 14' long, 9" sides, good condition
260-633-4047



9031 **\$7,000.00**
TRANSFER DECK
 3 strand transfer deck, 11' 6" wide x 28' long, electric drive, H-78 chain, good condition
260-633-4047



9034 **\$6,750.00**
ROLLCASE
 Rollcase 26" wide x 45' long, electric drive, good heavy duty unit
260-633-4047



9042 **\$3,500.00**
TRANSFER DECK
 4 strand transfer deck, was used as incline deck, 12' wide x 12' 6" long, electric drive, 81X type chain with lugs, good condition
260-633-4047



9043 **\$5,000.00**
TRANSFER DECK
 5 strand transfer deck, 12' 6" wide x 24' 6" long, electric drive, chains have rollers on top, good condition
260-633-4047



9050 **\$1,250.00**
BELT CONVEYOR
 47" wide x 8' 6" long, cleated belt, was used on incline, good condition
260-633-4047



9054 **\$6,000.00**
TRANSFER DECK
 3 strand transfer deck, 11' wide x 27' 6" long, electric drive, 81X chain, good condition
260-633-4047



9055 **\$12,500.00**
TILT HOIST
 3 arm tilt hoist, arms made for 48" packs, electric drive, includes 3 strand 11' x 27'6" infeed deck w/ 81x chain very good condition
260-633-4047



9057 **\$12,500.00**
GREEN CHAIN
 3 strand green chain, 8' wide x 101' log, electric drive, 81X type chain, good condition
260-633-4047



9059 **\$300.00**
LUMBER CARTS
 42"-49" wide x 7'-12' long, assorted styles and sizes, good condition, (price is per piece), 34 available
260-633-4047



9063 **\$12,500.00**
LOG TROUGH
 30' long, 12" wide ladderback chain, electric gear box drive, 1 set of log kickers, good condition
260-633-4047



Call or Email
Gaylord Yoder for details
574-536-1646
ads@showcaseequipment.us



9065 **\$12,500.00**
VIBRATING CONVEYOR
 Progress 24" wide pan x 35' long, 9" sides, good condition
260-633-4047



9066 **\$15,000.00**
VIBRATING CONVEYOR
 Mellott 24" wide pan x 50' long, 8" sides, includes sawdust section and chipper mouth, hyd drive, good working condition
260-633-4047



9067 **\$3,750.00**
BELT CONVEYOR
 24" wide x 13' long, was used as drop belt, heavy duty and in good condition
260-633-4047



9070 **\$1,250.00**
ROLL CASE
 20" wide x 13' long, heavy duty 6" dia rollers, dead rollers, good condition
260-633-4047



9071 **\$2,500.00**
BARN SWEEP DRIVE
 Cornell style barn sweep drive, hyd drive, includes some chain, good condition
260-633-4047



9072 **\$8,500.00**
BELT CONVEYOR
 concave belt, 24" wide x 40' long, hyd drive, includes all new rollers in belt, excellent condition
260-633-4047



9073 **\$6,000.00**
BELT CONVEYOR
 26" wide x 40' long, approx 8" sides, hyd drive, excellent condition
260-633-4047



9075 **\$800.00**
TAILING BELT
 6" wide x 20' long, was used for tailing belt, good condition
 260-633-4047



9078 **\$13,000.00**
VIBRATING CONVEYOR
 Morbark 17" wide pan x 37' long, 6" tall sides, has fines section, chipper infeed spout, good condition
 260-633-4047



9080 **\$4,500.00**
ROLL CASE/ TRANSFER
 roll case with transfer, 26" wide x 11' long, 5 strand pop-up transfer, all mechanical and line shaft ready, like new condition
 260-633-4047



9084 **\$12,500.00**
VIBRATING CONVEYOR
 Webster 34" wide pan x 35' long, 10" sides, electric drive, good condition
 260-633-4047



9085 **\$24,500.00**
LOG DECK
 3 strand 10' wide X 20' long log deck, Tulsa Winch electric drive, H-78 chain, heavy duty built, BRAND NEW!
 260-633-4047



9086 **\$23,000.00**
GREEN CHAIN
 3 strand 10' wide x 30' long green chain, Tulsa Winch drive, C-55 rooftop chain, heavy duty built, BRAND NEW IN STOCK AND READY TO SHIP
 260-633-4047



9087 **\$17,500.00**
LOG TROUGH
 55' long, 12" pan width, electric drive, good working condition
 260-633-4047



9088 **\$3,000.00**
ROLL CASE
 24" wide x 20' long, 7" dia rolls, no drive, good condition
 260-633-4047



9090 **\$12,500.00**
LOG TROUGH
 40' long, 110 ladder-back chain, 14" wide, s- style drive, no power, good working condition
 260-633-4047



9091 **\$12,500.00**
GREEN CHAIN
 3 strand, 9'6" wide x 101' long, electric drive, 8X chain, very good condition
 260-633-4047



9092 **\$8,500.00**
LOG DECK
 5 strand HEAVY DUTY log deck, 38' long, electric drive, approx 20' wide, includes stop-load, good working condition
 260-633-4047



9093 **\$9,500.00**
GREEN CHAIN
 5 strand green chain, 10' 6" wide x 50' long, 81X chain, electric drive, excellent condition
 260-633-4047



9094 **\$3,500.00**

TRANSFER DECK

6 strand transfer deck, 13' wide x 10' long, 81X chain, electric drive, good condition
260-633-4047



9095 **\$4,500.00**

TRANSFER DECK

2 strand transfer deck, 5' wide x 23' long, 81XH chain, BRAND NEW DRIVE SHAFT/ SPROCKETS, very good condition
260-633-4047



9096 **\$3,750.00**

TRANSFER DECK

2 strand transfer deck, 3' wide x 25' long, electric drive, 81X chain, good condition
260-633-4047



9097 **\$9,500.00**

TRANSFER DECK

5 strand transfer deck, 25' long, custom width (call with your needs), S- style drive electric powered, BRAND NEW DRIVE SHAFT/ CHAINS, excellent condition
260-633-4047



9098 **\$400.00**

INFEED SPOUT

various chipper infeed spouts for vibrating conveyors, call with your needs, \$400 each
260-633-4047



9100 **\$4,000.00**

VIBRATING CONVEYOR

Mellott drive section for vibrating conveyor, 17" wide pan x 10' long, good working condition
260-633-4047



9101 **\$12,000.00**

VIBRATING CONVEYOR

Precision vibrating conveyor, 18" wide pan x 30' long, 12" tall sides, BRAND NEW fiberglass paddles, excellent condition
260-633-4047



A customer called and wanted advice to sell his complete circle mill setup. Ad Sales: "Well, it could be advertised in our catalog, then it will be on our website also." His reply, "I had it on two different websites and didn't get much response." Customer took Ad Sales advice to enter it on our website and 16 days later a happy customer called it SOLD!



9105 **\$3,750.00**

ROLL CASE

Mellott roll case 30" wide x 18' long, rolls are 8" dia, heavy duty and in excellent condition
260-633-4047



9107 **\$6,000.00**

LOG DECK

4 strand log deck, 13' wide x 21' long, electric drive, good condition
260-633-4047



9108 **\$15,000.00**

STEP FEEDER

step feeder for feeding debarker, 20' wide capacity, 5 steps, electric drive, good working condition
260-633-4047



**EQUIPMENT
SHOWCASE**



9109 **\$4,000.00**

WASTE CONVEYOR

paddle style waste conveyor, 24" wide x 62' long, approx 4" sides, electric drive, good working condition
260-633-4047



9111 **\$10,000.00**

LOG TROUGH

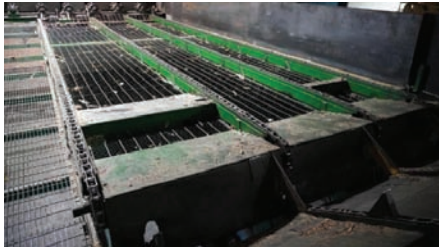
36" wide over-all 19' long, electric drive, good working condition
260-633-4047



9112 **\$10,000.00**

HOURLASS ROLL CASE

24" wide x 31' long, has one set of log kickers, electric drive, very good condition
260-633-4047



9113 **\$5,750.00**

TRANSFER DECK

4 strand transfer deck, 10' wide x 26' long, 81XH chain, electric drive, good condition
260-633-4047



9114 **\$2,750.00**

TRANSFER DECK W/ LUGS

4 strand transfer deck used as an incline deck for logs, 8' 6" x 8' 6", electric drive, good condition
260-633-4047



9115 **\$9,500.00**

GREEN CHAIN

4 strand green chain, 7" 6" wide x 53' long, 81X chain, electric drive, good condition
260-633-4047



9117 **\$4,500.00**

TRANSFER DECK

3 strand green chain, 40" wide x 18' long, C-55 rooftop chain, electric drive, used for pallet cut-stock, very good condition
260-633-4047



9118 **\$3,500.00**

BELT CONVEYOR

7' wide x 7' long, hyd drive, very good condition
260-633-4047



9119 **\$12,000.00**

VIBRATING CONVEYOR

Jeffrey vibrating conveyor, 18" wide pan x 36' long, 6" tall sides, electric drive, good working condition
260-633-4047



9121 **\$8,500.00**

UNSCRAMBLER

Irvington-Moore 7 strand unscrambler, 75" tall, includes even-end rollers, electric drive, good working condition
260-633-4047



9122 **\$5,000.00**

ROLL CASE

Mellott roll case, 24" wide x 32' long, good condition
260-633-4047



9123 **\$3,500.00**

POP-UP TRANSFER

Mellott pop-up transfer, 3 strands, 11' wide x 5' long, hyd drive, working condition
260-633-4047



9124 **\$3,500.00**
TRANSFER DECK
 2 strand transfer deck, 50" wide x 40' long,
 electric drive, very good condition
260-633-4047



9125 **\$2,500.00**
TRANSFER DECK
 roll case with transfer, 24" wide x 12' long roll
 case, 3 strand pop-up transfer deck 10' 6" wide x
 5' long, electric drive, working condition
260-633-4047



9126 **\$18,500.00**
VIBRATING CONVEYOR
 Mellott 24" wide pan x 62' long, sawdust
 screen section, 8" tall sides, electric drive,
 good working condition
260-633-4047



9127 **\$6,500.00**
ROLL CASE
 24" wide x 32' long, 10" dia rollers, spiral
 rolls on one end, electric drive, heavy duty
 and in very good condition
260-633-4047



9129 **\$10,750.00**
SUPREME MFG ROLLCASE
 20" wide x 20' long, 6" dia rolls, 1 7/16" dia
 shafts, electric drive, BRAND NEW!!
260-633-4047



9130 **\$1,280.00**
LUMBER CARTS
 Supreme Mfg lumber carts, 42" wide x 92"
 long, heavy duty casters, 4 stake pockets,
 includes 2 stakes, BRAND NEW!!
260-633-4047



9131 **\$7,000.00**
GREEN CHAIN
 3 strand green chain, 9'6" wide x 40' long,
 C-55 rooftop chain, good working condition
260-633-4047



9132 **\$6,500.00**
WASTE CONVEYOR
 24" wide pan x 73' long, electric drive,
 ladder-back chain, working condition
260-633-4047



9133 **\$7,500.00**
CHIP DRAG
 18" wide paddles x 35' long,
 heavy duty built, excellent condition
260-633-4047



9134 **\$10,500.00**
WASTE CONVEYOR
 used for chips, 18" wide paddles x 58' long,
 electric drive, heavy duty built and in
 excellent condition
260-633-4047



9135 **\$3,750.00**
WASTE CONVEYOR
 used for chips, 18" wide paddles x 12' long,
 electric drive, heavy duty built and in
 excellent condition
260-633-4047



9136 **\$12,500.00**
LOG DECK
 Mellott 4 strand log deck, 10' wide x 23'
 long, Tulsa-Winch electric drive, stop-load,
 excellent condition
260-633-4047



9137 **\$12,500.00**
GREEN CHAIN
 Mellott 3 strand green chain, 10' wide x 40' long, Tulsa-Winch electric drive, C-55 rooftop chain, excellent condition
260-633-4047



9138 **\$250.00**
DEAD ROLLERS
 16" wide x 10' long, rolls are 2 1/2" dia, good condition, price is per piece, up to 5 available
260-633-4047



9647 **\$12,000.00**
ROLL CASE
 90" wide x 28' long, electric drive, heavy duty and in good condition
260-633-4047



9664 **\$3,000.00**
TRANSFER DECK
 4 strand, 10' wide x 11 1/2' long, electric drive, H-78 chain, good condition
260-633-4047



9687 **\$2,750.00**
TRANSFER DECK
 7 strand, 12 1/2' wide x 7' long, 81X chain, electric drive, good condition
260-633-4047



9698 **\$8,500.00**
MORRIS UNSCRAMBLER
 Morris 6 strand, 14' long, electric drive, good working condition
260-633-4047



9771 **\$4,500.00**
TRANSFER DECK
 4 strand, 11' wide x 22' long, H-78 chain, good condition
260-633-4047



9823 **\$3,500.00**
PENDU ROLL CASE
 24" wide x 27' long, hyd. drive, heavy duty, in good condition
260-633-4047



**EQUIPMENT
SHOWCASE**



9850 **\$15,000.00**
LOG TROUGH
 chain is 11" wide, trough is 38' long, electric gear box drive, 1 set of kickers, heavy duty and in good condition
260-633-4047



9852 **\$3,500.00**
WASTE CONVEYOR
 ladderback chain, 18" wide pan x 33' long, 12" sides, electric gear box drive, was used on incline, good condition
260-633-4047



9854 **\$5,500.00**
ROLL CASE
 30"W x 38'L, includes several cant stops and kickers, good condition
260-633-4047



9920 **\$5,500.00**
TILT HOIST
 3 strand, 10' wide, working condition
260-633-4047



9921 **UNSCRAMLER** **\$5,500.00**
5 strand, 7' tall x 13' wide,
working condition
260-633-4047



9970 **BELT CONVEYOR** **\$2,500.00**
18" wide x 18' long, hyd drive,
approx 4" sides, good condition
260-633-4047



9983 **VIBRATING CONVEYOR** **\$9,500.00**
30' L, hyd drive, 17" pan, 4" sides,
good condition
260-633-4047



9985 **VIBRATING CONVEYOR** **\$30,000.00**
93' long, electric drive, 9" tapered sides, 18" pan
at bottom, 26" at top, includes chipper infeed and
fiberglass sections, good working condition
260-633-4047



9988 **HONEYVILLE AUGER** **\$1,850.00**
1-9 S 05662, 10" x 15', painted,
HD flighting, hydraulic drive,
in very good condition
260-633-4047



9996 **WASTE CONVEYOR** **\$4,500.00**
36" wide x 28' long, steel slat conveyor for
slabs etc., very good condition
260-633-4047



9997 **LOG TROUGH** **\$12,500.00**
50"x 22' overall, air cylinder log clamp
down, electric drive, WR124 chain w/cleats,
air cylinder on loader
260-633-4047



10129 **AIR LOCK** **\$3,250.00**
"electric drive, various sizes, good
condition, prices vary from \$2000 -\$4000."
260-633-4047



10211 **MORBARK CHIP BLOWER** **\$3,000.00**
30 in. dia. 15 HP. electric motor, includes
mounting plate and pipe,
VERY GOOD CONDITION
260-633-4047



10270 **DUST BLOWER** **\$1,500.00**
48" dia. 12" inlet / 12" outlet,
in good condition
260-633-4047



10275 **AIR LOCK** **\$3,500.00**
Koger-Air, 14" dia inlet/outlet,
electric drive, very good condition
260-633-4047



10276 **BAG HOUSE** **\$3,500.00**
Honeyville bag house, includes filters,
very good condition
260-633-4047



10291 **\$2,750.00**
MORBARK CHIP BLOWER
40" dia. 30 HP. electric drive,
good condition
260-633-4047



10295 **\$1,750.00**
DUST BLOWER
General Mfg. 48" dia, 15" inlet,
40 hp electric power, good condition
260-633-4047



10296 **\$1,500.00**
DUST BLOWER
Bailey Mfg. 50" dia, 17" inlet, no power,
good condition
260-633-4047



10302 **\$750.00**
DIVERTER
diverter for chip loading system,
good condition, 1 available
260-633-4047



10306 **\$150.00**
EXHAUST FANS
16" dia, electric drive, good condition,
3 available
260-633-4047



10307 **\$3,500.00**
DUST CYCLONE
8' dia. x 14' tall, in good working condition
260-633-4047



10309 **\$3,500.00**
BAG HOUSE SYSTEM
approx 8' x8', includes blower and
numerous pipes, good condition
260-633-4047



10317 **\$1,500.00**
DUST AUGER
12' x 2' infeed, 4" auger, electric drive,
includes 4" pipe auger, electric drive
260-633-4047



10323 **\$5,500.00**
BARN SWEEP
Hyd drive, 44"W x41'L ,16" paddles,
good working condition
260-633-4047



10327 **\$4,500.00**
CHIP BLOWER
48" blower w/3 truck loading chutes,
good condition
260-633-4047

Sell your
equipment
fast for cash!

Call or Email
Gaylord Yoder for details
574-536-1646
ads@showcaseequipment.us



10330 **\$2,950.00**
CHIP BLOWER
Morbark 48" dia, 16" x 16" outlet, includes
single loading chute, good condition
260-633-4047



10335 **\$1,500.00**
EXHAUST BLOWER
 Twin City 40" dia exhaust fan, 125hp electric motor, 16" inlet-16" outlet, good condition
260-633-4047



10337 **\$1,500.00**
AIR LOCK
 Rees air lock, 16" inlet/outlet, electric drive, good working condition
260-633-4047



10341 **\$3,000.00**
DUST BLOWER
 Aerovent dust blower, 48" dia, 20" inlet- 18" outlet, electric drive, good condition
260-633-4047



10342 **\$1,500.00**
CYCLONE
 dust cyclone 20" dia x 5' tall, 6" inlet, electric drive, includes bag house, good working condition
260-633-4047



10345 **\$2,250.00**
CHIP CYCLONE
 Precision chip cyclone, used with 58" dia chipper, good condition
260-633-4047



10346 **\$2,500.00**
DUST BLOWER
 Koger dust blower, 38" dia, top discharge, 18" inlet/ 16" outlet, good condition
260-633-4047



10347 **\$1,750.00**
DUST BLOWER
 36" dia dust blower, 18" inlet/ 16" outlet, good condition
260-633-4047



10348 **\$2,750.00**
DUST BLOWER
 48" dia dust blower, 18" inlet/ 15" outlet, good condition
260-633-4047



10349 **\$2,500.00**
DUST BLOWER
 48" dia blower, 17" inlet/ 16"outlet, 40 hp electric power, good condition
260-633-4047



10350 **\$2,000.00**
CHIP BLOWER
 Fulghum chip blower, outlet 14" x 16", good condition
260-633-4047



10351 **\$3,000.00**
CHIP BLOWER
 36" dia chip blower, single chip loading chute, outlet 12" x 14", good working condition
260-633-4047



10352 **\$3,250.00**
CHIP BLOWER
 Morbark 24" dia chip blower, electric drive, very good condition
260-633-4047



10353 **\$2,200.00**
CHIP LOADING DIVERTER
 2 way chip diverter, good condition
 260-633-4047



10354 **\$2,000.00**
CHIP CYCLONE
 approx 6' dia x 8' tall, 15" inlet size,
 good condition
 260-633-4047



**EQUIPMENT
 SHOWCASE**



10355 **\$850.00**
AIR LOCK
 13" inlet/outlet, gear box drive,
 good condition
 260-633-4047



10356 **\$5,500.00**
DUST BLOWER
 Whirlwind SW-20 blower, 20" inlet/
 18" outlet, blower band is AR-400 steel,
 60 hp electric drive, like new condition
 260-633-4047



10357 **\$2,750.00**
DUST BLOWER
 Murphy Rodgers dust blower, 20" inlet/
 15" x 19" outlet, no power,
 working condition
 260-633-4047



10048A **\$2250. OBO**
18" PENDU DUST BLOWER
 with a electric motor, in very good condition
 301 616 1871



11010 **\$5,000.00**
DIP TANK
 5' x 5' x 20' long, bare tank, no mast etc,
 good condition
 260-633-4047



11011 **\$10,000.00**
DIP TANK
 8' wide x 17' long, electric drive,
 complete unit ready to go
 260-633-4047



12172 **\$2,250.00**
ELECTRIC MOTOR
 150hp, 1775rpm, 4445T frame,
 working condition
 260-633-4047



12173
ELECTRIC MOTORS
 lots of electric motors from 1hp to 300hp ,
 call with your needs,
 prices range from \$10-\$15 per hp
 260-633-4047



**EQUIPMENT
 SHOWCASE**



12174 **\$6,500.00**
DIESEL POWER UNIT
 671 Detroit power unit, was used to run
 sawmill, 12,757 hours showing,
 good operating condition
 260-633-4047



12176 **\$2,750.00**
ELECTRIC MOTOR
 Toshiba 3 phase, 150 hp, TEFC, 890 rpm's,
 505UZ frame, very good condition
 260-633-4047



12135A \$35,000. OBO
DETROIT 60 SERIES DIESEL SKID W/600 GAL. HYD.TANK
 Detroit 12.7L 475 HP. w/clutch & hyd. pumps, 40 KW belt drive generator, a good well-maintained hard working unit still in operation, all hyd. lines & pumps go along, consider selling as a package deal w/ the Weing molder available by June 2024
570 758 2597



12136A \$8500. OBO
855 BLOCK CUMMINS DIESEL POWER UNIT
 290 hp, turbo, 2 7/16" stub shaft. Single 14 clutch, IN GOOD condition, was used on the mill
660 280 5110



12137A \$5,000.00
471 DETROIT POWER UNIT
 HEY only 2800 hr. 180hp @ 1200RPM, 210hp @ 1600RPM, 14"- 9 groove pulley. Rockwell clutch, a nice smooth running engine < look @ the hours >
812 592 4398



13110 \$25,000.00
PRENTICE D280E KNUCKLEBOOM
 Cummins 5.9 diesel engine, CTR Delimber mounted on trailer, 48" max continuous grapple, has hookups for bucksaw, pilot joystick controls, starts and runs good, woods/road ready
260-633-4047



13372A \$32,900.00
329E JOHN DEERE TRACK LOADER
 2014, 3350 hr. 83hp Yanmar diesel, cab w/heat only, EH controls, lspd, 15" tracks, 84" BOCE bucket, good condition,
 check APEX MACHINERY LLC
315 536 3229



13373A \$67,500.00
SVL 97-2 KUBOTA TRACK LOADER
 2021, ONLY 425 hr. CAH, Hi-Flow, hyd. coupler, zig zag track, 84" tooth bucket, this machine is is ready for work, financing available check
 APEX Machinery LLC
315 536 3229



13374A \$45,000.00
244K JOHN DEERE WHEEL LOADER CAH
 2018,7300 hr. hyd coupler, 96"bucket, very good condition, ready for work,
 check APEX MACHINERY LLC
315 536 3229



14056 \$10,000.00
SIZER
 Brewco Model; BR-413, 14" wide x 6" tall capacity, 40hp electric drive,
 good condition
260-633-4047



14063 \$6,500.00
PENDU BOARD STACKER
 hyd drive, includes control panel,
 good condition
260-633-4047



14067 \$5,500.00
DEDUSTER
 Model: 450 LBD, SN: 23719L, 8" width capacity, electric drive, good condition
260-633-4047



14068 \$4,750.00
NOTCHER
 MMT Single head notcher, electric drive,
 indexable head, good condition
260-633-4047



14071 \$6,500.00
DEDUSTER
 Go-Fast deduster, electric drive, 6" wide capacity, includes Brand New brushes,
 very good condition
260-633-4047



15071 **\$1,500.00**
SURFACE GRINDER
 electric drive, working condition
 260-633-4047



15077 **\$600.00**
JOCKEY GRINDER
 MN: 97H, Milwaukee drill powered
 260-633-4047



15078 **\$6,500.00**
BAND SAW SHARPENER
 Armstrong, Model #6 RH, SN: 16154, electric drive, includes extra grinding wheels and all clamps and strands, Armstrong #58-B filling clamp, working condition
 260-633-4047



15079 **\$3,750.00**
BAND SHARPENER
 Armstrong, Model #6 RH, electric drive, no clamp or stands
 260-633-4047



15080 **\$4,500.00**
KNIFE GRINDER
 Hanchett, size 60-MG, electric drive, 8' 4" long bed, working condition
 260-633-4047



15081 **\$3,750.00**
KNIFE GRINDER
 Newman G-123, SN: 12528, electric drive, 32" long bed, working condition
 260-633-4047



15084 **\$750.00**
GUIDE DRESSER
 Brewco EZ Guide Shaper, electric drive, set up for guides for a Brewco B-1600, excellent condition
 260-633-4047



17066 **\$7,500.00**
TRIM SAW
 double end trim saw, electric drive, good working condition
 260-633-4047



17071 **\$17,500.00**
TRIMMER
 Multi - head trimmer, 7 saws, 6" capacity up to 20' long, electric drive, good condition
 260-633-4047



17079 **\$5,000.00**
TRIM SAW
 double end trim, 22" blades, electric drive, 16' long capacity, good condition
 260-633-4047



17084 **\$18,500.00**
TRIM SAW
 Hemco drop saw trimmer, 16' long capacity, includes infeed and waste conveyor, all controls included, good working condition
 260-633-4047



17094 **\$8,625.00**
CHOP SAW
 Pro-Cut chop saw, up-cut style, 7" x9" cutting capacity, 22" dia blade, includes 8' infeed/outfeed, 4 flip stops, BRAND NEW, buy this one or order one to your specs
 260-633-4047



17095 **\$7,000.00**

CHOP SAW

Morgan chop saw, line shaft ready, 22" dia blade, includes 1 extra blade 10' infeed/ 5' outfeed, good condition and ready to work
260-633-4047



17097 **\$1,750.00**

CHOP SAW

Industrial up-cut chop saw, 10 hp electric drive, air blade controls, good working condition
260-633-4047



17098 **\$27,500.00**

CHOP SAW

Baker triple select cut-off saw, 3 blades, electric drive,
260-633-4047



Call or Email
Gaylord Yoder for details
574-536-1646
ads@showcaseequipment.us



17100 **\$4,000.00**

CHOP SAW

Morgan style chop saw, line-shaft ready, 6' infeed/6' outfeed, working condition
260-633-4047



17101 **\$7,500.00**

TRIM SAW

Cornell double-end trim saw, 24" dia blades, 16' long capacity, electric power, includes waste conveyor
260-633-4047



**EQUIPMENT
SHOWCASE**



17102 **\$7,500.00**

TRIM SAW

9- head drop-saw trimmer, 24" dia blades, air cylinders on heads, electric powered, includes controls, working condition
260-633-4047



17043A **\$65,000.00**

NEW BUCK SAW

new in 2023, hydraulic, bundle capacity 48" x 48" x 16' long, still in operation, here she is same as new
231 689 5170



18080 **\$2,500.00**

MELLOTT HYDRAULIC UNIT

with a 15 HP electric drive,
VERY good condition
260-633-4047



18088 **\$1,500.00**

**INGERSOLL-RAND
AIR COMPRESSOR**

7 1/2 HP. electric motor, 200 gal. vertical tank, good condition
260-633-4047



18093 **\$1,800.00**

HYDRAULIC POWER PACK

5 HP. electric motor, has cooling radiator, tank heater, good working condition
260-633-4047



18096 **\$1,500.00**

HYDRAULIC POWER UNIT

20 HP. electric motor, 2 stage vane type pump, GOOD working condition
260-633-4047



18110 **\$2,500.00**
HYDRAULIC UNIT
 15 HP. electric drive, 2 pumps, several electric valves, good working condition
 260-633-4047



18121 **\$2,500.00**
HYD. UNIT
 10 Hp. electric power, 80 gal. tank, good condition
 260-633-4047



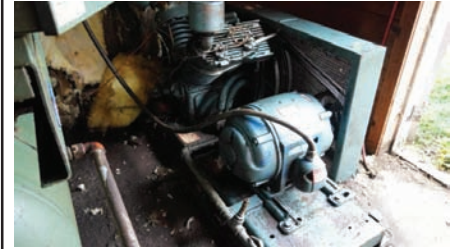
18153 **\$3,500.00**
HYD. UNIT
 GS hyd. unit, 25 HP. electric drive, 2 pump sections, one is a pressure compensated, very good condition
 260-633-4047



18159 **\$4,500.00**
SULLAIR AIR DRYER
 Sullair air dryer, 500CFM, 3 phase, 460 volts, refrigerant type, excellent condition
 260-633-4047



18166 **\$12,500.00**
CARRIAGE DRIVE
 Tyrone SMA-270, 125hp electric drive, includes hyd unit and cable drum, good condition
 260-633-4047



18168 **\$1,500.00**
AIR COMPRESSOR
 20 HP electric drive, working condition
 260-633-4047



18176 **\$2,500.00**
AIR COMPRESSOR
 30 hp electric drive, approx 70 gal horizontal tank, good condition
 260-633-4047



18178 **\$2,500.00**
HYD UNIT
 15 hp, electric powered, vane type pump, very good condition
 260-633-4047



18184 **\$2,000.00**
HYD UNIT
 pressure comp pump, has reservoir and cooling radiator
 260-633-4047



18185 **\$2,500.00**
AIR DRYER
 Arrow Pneumatics model; B-225-2, 230 volts, 225 scfm's, working condition
 260-633-4047



18186 **\$4,500.00**
HYDRAULIC PACK
 30 HP electric motor w/double pump direct mounter, approx. 100 gal tank, lots of electric control valves, oil cooler, electric control box
 260-633-4047



18189 **\$1,500.00**
CURTIS AIR COMPRESSOR
 80 gallon upright tank w/5hp motor, good condition
 260-633-4047



18191 **CARRIAGE DRIVE** **\$2,500.00**
75hp electric, double pilot pump, directional valve
260-633-4047



18193 **AIRTECK CT400 AIR DRYER** **\$1,750.00**
Air-Tek refrigerated air dryer, 400 CFM, 2hp, 460 volts, excellent condition
260-633-4047



18194 **DELTECH FLEX SERIES** **\$1,750.00**
Del-Tech air dryer, refrigerated air dryer, SCFM:300, 460volts, excellent condition
260-633-4047



18195 **LINE SHAFT** **\$750.00**
Hyd tank, and hyd pumps - 3 hyd pumps
260-633-4047



18197 **CARRIAGE FEED & DRIVE** **\$7,500.00**
Tyrone Berry SN: A2850, Model:SMA-225, spool of 3/4" steel cable, 60hp electric motor, hyd tank, good working condition
260-633-4047



Call or Email
Gaylord Yoder for details
574-536-1646
ads@showcaseequipment.us



18199 **HYD UNIT** **\$3,750.00**
40 hp electric, approx 150 gal capacity tank, PVR50 hyd pump, includes all valves attached, very good condition
260-633-4047



18200 **CARRIAGE DRIVE** **\$3,500.00**
40 hp electric drive, approx 125 gal reservoir, includes cable drum and motors, good condition
260-633-4047



18206 **HYD UNIT** **\$2,750.00**
10 hp electric drive, approx 160 gal tank, pressure comp pump, good working condition
260-633-4047



18207 **CARRIAGE DRIVE** **\$6,500.00**
Tyrone-Berry feed, SMA-285 carriage feed, includes cable drum and hyd unit, good working condition
260-633-4047



18208 **CARRIAGE DRIVE** **\$1,750.00**
Tyrone Berry carriage drive, cooling radiator, no power
260-633-4047



18209 **CARRIAGE DRIVE** **\$1,750.00**
Tyrone Berry carriage drive, cooling radiator, working condition
260-633-4047



18210 **\$1,750.00**
HYD UNIT
 used on Fulghum rosser-head debarker,
 15 hp electric drive, 2 stage vane type pump,
 approx 45 gal tank, working condition
260-633-4047



18211 **\$1,000.00**
HYD UNIT
 20 hp electric drive, pressure comp pump,
 approx 80 gal tank, good condition
260-633-4047



18213 **\$1,750.00**
HYD UNIT
 5 hp electric drive, pressure comp pump,
 cooling radiator, approx 30 gal capacity
 tank, good condition
260-633-4047



18214 **\$1,200.00**
HYD RESERVOIR
 several outlets, approx 140 gal capacity,
 excellent condition
260-633-4047



18215 **\$1,500.00**
HYD UNIT
 15 hp electric motor, vane type pump,
 approx 80 gal capacity reservoir,
 good working condition
260-633-4047



18216 **\$300.00**
HYD RESERVOIR
 approx 35 gal capacity, good condition
260-633-4047



18217 **\$800.00**
HYD POWER PACK
 2 hp electric power, enclosed pump unit,
 approx 20 gal capacity, good condition
260-633-4047



18218 **\$1,000.00**
HYD POWER UNIT
 7 1/2 hp electric power, vane type pump,
 good condition
260-633-4047



18219 **\$750.00**
HYD RESERVOIR
 approx 175 gal capacity, good condition
260-633-4047



18220 **\$2,000.00**
HYD POWER UNIT
 25 hp electric power, pressure comp pump,
 approx 85 gal capacity, good condition
260-633-4047



18221 **\$1,250.00**
HYD POWER UNIT
 30 hp electric power, pressure comp pump,
 approx 50 gal capacity, good condition
260-633-4047



18223 **\$1,750.00**
HYD POWER UNIT
 7 1/2 hp electric power, enclosed pump unit,
 includes large control panel,
 approx 50 gal capacity, good condition
260-633-4047



18224 **\$1,750.00**
HYD POWER UNIT
 15 hp electric power, vane type pump, includes 4 electric valves, approx 60 gal capacity, very good condition
260-633-4047



18225 **\$2,750.00**
AIR COMPRESSOR
 Kaeser screw compressor, approx 15 hp, working condition
260-633-4047



18226 **\$2,750.00**
AIR DRYER
 SMC air dryer, single phase 220 volts, air flow; 5200 l/min, working condition
260-633-4047



18227 **\$3,200.00**
AIR COMPRESSOR
 piston type compressor, 3 stage, 25 hp electric motor, approx 80 gal horizontal tank, working condition
260-633-4047



18228 **\$3,750.00**
AIR COMPRESSOR
 Comp-Air screw compressor, 25 hp electric power, 6678 hrs., approx 110 CFM, excellent condition
260-633-4047



18229 **\$4,000.00**
AIR COMPRESSOR
 Ingersoll-Rand Pac-Air screw compressor, 125 hp electric motor, not tested but appears good
260-633-4047



18230 **\$4,500.00**
AIR COMPRESSOR
 Ingersoll-Rand screw compressor, 50 hp electric power, approx 225 CFM, good operating condition
260-633-4047



18232 **\$1,500.00**
AIR COMPRESSOR
 Ingersoll-Rand screw compressor, 25 hp electric used to power, 24520 hrs, compressor unit only, line shaft ready, working condition
260-633-4047



18233 **\$4,750.00**
AIR COMPRESSOR
 Quincy screw compressor, 100 hp electric power, 66,000 hrs, good working condition
260-633-4047



19008 **\$75,000.00**
SCRAGG MILL
 Fast Line scragg mill, similar to "Big Jake", twin blades 56" dia, electric drive, includes off-bearer belts, price includes controls and machine gone through shop, ready for production
260-633-4047



19009 **\$57,500.00**
SCRAGG MILL
 Industries PHL log length scragg mill, 48" dia blades, electric drive, log turners, 2 slab drop belts, all electrical and controls included, this machine was recently in production and is in very good condition
260-633-4047



20150 **\$3,000.00**
PHASE CONVERTER
 rotary 230 volt, 25 HP phase converter, excellent condition
260-633-4047



20173 **\$2,000.00**
TIRE CHAINS
 Bear Claw style, made for 18.4 x 26 tires,
 good condition, total of 4
260-633-4047



20202 **\$4,500.00**
DELIMBER
 CTR de-limber, 36" chain-saw bar,
 good working condition
260-633-4047



20233 **\$2,500.00**
ELECTRICAL
 Cutler Hammer 400 amp motor control
 center, includes various disconnects and
 starters, good condition
260-633-4047



20235 **\$3,000.00**
OPERATOR CAB
 5' x 6' cab, good condition
260-633-4047



20255 **\$7,500.00**
CARRIAGE DRIVE
 HMC Model; 1DC, AC carriage drive,
 complete unit ready to work
260-633-4047



20269 **\$2,250.00**
TIRE CHAINS
 skidder tire chains, made for 18.4 x 26 tires,
 bear paw style, excellent condition
260-633-4047



20270 **\$5,200.00**
METAL DETECTOR
 MDI whole log metal detector, capacity is
 30" wide x 28" tall, includes controls,
 very good condition
260-633-4047



20271 **\$5,000.00**
OPERATOR CAB
 approx 5'x5', comes with BRAND NEW
 glass, in good condition
260-633-4047



20274 **\$10,000.00**
METAL DETECTOR
 18"W belt 22" opening 15' long 74" high,
 excellent condition
260-633-4047



20275 **\$4,000.00**
PLANETGEAR GEARBOX
 43.78 - 1 ratio NEW
260-633-4047



20278 **\$2,750.00**
OPERATOR CAB
 4'x5'
260-633-4047



20279 **\$3,500.00**
STEEL FLATBED FOR TRUCK
 8'x21' w/56" tall headache rack, includes
 misc. straps and ratchets
260-633-4047



20280 **MUD SAW** **\$1,500.00**
 3/4" x 8" cutter, 6' arm, hyd drive,
 good working condition
260-633-4047



20281 **SAWYERS CAB** **\$4,750.00**
 55" x 100" x 7' tall, has AC unit, is insulated,
 does not include any controls, includes all new
 glass and air ride seat, and is in good condition
260-633-4047



20282 **CARRIAGE DRIVE** **\$7,500.00**
 Jacobson AC/DC, control box w/250A, 600 VAC
 460V transformer, 125hp electric motor w/blower
 motor, includes conduit from boxes to equipment
260-633-4047



20284 **FIBERGLASS SECTIONS** **\$750.00**
 several sections of fiberglass vibrating
 conveyor sections, various sizes, call with
 your needs, price is per piece
260-633-4047



20286 **BABBIT MELTING POT** **\$900.00**
 Babbitt melting pot and propane burner,
 includes ladle, jig and extra babbitt,
 good condition
260-633-4047



20288 **MUD SAW** **\$650.00**
 hyd drive, arm is 6' 6" long, carbide teeth,
 good working condition
260-633-4047



20289 **METAL DETECTOR** **\$7,500.00**
 MDI metal detector, built for planer,
 includes all controls,
NEW, NEVER INSTALLED!
260-633-4047



20298 **STRAPPING TOOL** **\$550.00**
 manual seal-less strapping tool, similar to
 Fromm, will do banding from 1/2" up to
 3/4" wide, **BRAND NEW IN STOCK!**
260-633-4047



20299 **OPERATOR CAB** **\$4,500.00**
 Fast-Line sawyer/ operator cab, 5' x 10' x 6'
 tall, nice large size, good condition
260-633-4047



20300 **OPERATOR CAB** **\$5,500.00**
 Operator/ sawyer cab, 4'6" wide x 13' long
 x 7' tall, includes air-ride seat,
 good condition
260-633-4047



20301 **OPERATOR CAB** **\$4,000.00**
 Operator/ sawyer cab, 4' x 5' x 8' tall,
 good condition
260-633-4047



20306 **GRAPPLE FORKS** **\$4,000.00**
 73" wide overall, pin-on style,
 good working condition
260-633-4047



20139A CALL FOR PRICING
WOOD-PRO 430 FIREWOOD PROCESSOR
 35 hp Vanguard gas engine, 12' conveyor, 14' log trough, 23" log dia. 6 way splitter, joystick controls, 3 strand log deck, hyd. Lift
610 593 6112



20151A \$27000. OBO
DOUCET FLOORING BOARD END MATCHER
 21" s strand deck, 2 notcher heads, electrical drive some air, 1 head is a matcher & 1 is a groover, 220 V 3 ph. 10' dia. turning table included, in good working condition
785 761 6282



Call or Email
Gaylord Yoder for details
574-536-1646
ads@showcaseequipment.us



20169A \$100,000. OBO
2008 WEINIG HYDROMAT H-2000 5-HEAD HI-SPEED MOLDING
 feed speed of up to 330 linear ft/min. 5 head (originally 7 head). Standard 9" wide, Hyd.- power feed rollers & heads, auto waxilt oiler, includes feed rollers, tooling, spare parts, as well as hydraulics, Well maintained machine, stillin operation, check it out, available by June 2024
570 758 2597



EQUIPMENT SHOWCASE



20170A \$1,000.00
FRICK MANUAL NETWORKS
 works good (here is a buy)
608 375 2430



20171A \$2500. OBO
70' CONVEYOR BELT
 39" WIDE, no motor or gearbox, manufactured by Martins Manufacturing, in good condition
484 335 2657



20172A TAPER BOARD \$900. OBO
2- PADDLE CONVEYOR \$1000. OBO
22'X 20"W TAPER BOARD CONVEYOR, 10'&22'X 13"W PADDLE CONVEYORS
 taper board conveyor, 3/4 hp motor, 240V 3 PH, brackets included to suspend from the ceiling, paddle conveyors 3/4 hp motor, 240V 3 PH, in good condition
484 335 2657

BANDSAW BLADES

©2020 Wood-Mizer LLC

All Sizes Available!

TOP PERFORMING, economical blades for all primary & secondary wood processing. Welded to your lengths! We also offer expert sharpening services, plus...
Gang • Edger • Scragg • Trim • Split • Strob
and just about any Custom Saws you need to keep you cutting longer...
for less. Ask about FREE Shipping!

Call Marvin Miller for a quote
231-924-5953 (fax) 231-924-6186 / 11606 Erickyard Road • Holton, MI 49425

I always arrive late at the office, but I make up for it by leaving early. ~ Charles Lamb



PROCUT CHOP SAWS

HEAVY-DUTY UP CUT



- 3" HD Built Rollers with 1" Pillow Black Bearings (8' Infeed / 8' Outfeed)
- Convenient Manual Hand-Powered Blade Operate
- 22" Blade with Dust Collection System
- 7"x9" Cutting Capacity
- (4) Flip Stops
- (3) V-Belt Drive

**Foot
Operated
Kick Out**



**Air
Stops**



**Air
Kick Off**



**Air
Shield
on
Blade**



Air Flipper and Clamp



**Air
Control
Panel**



**Knee Bump
Drive on Rolls**



**SE SHOWCASE
EQUIPMENT LLC**

260-633-4047

206 Vine Street • Wolcottville, IN 46795

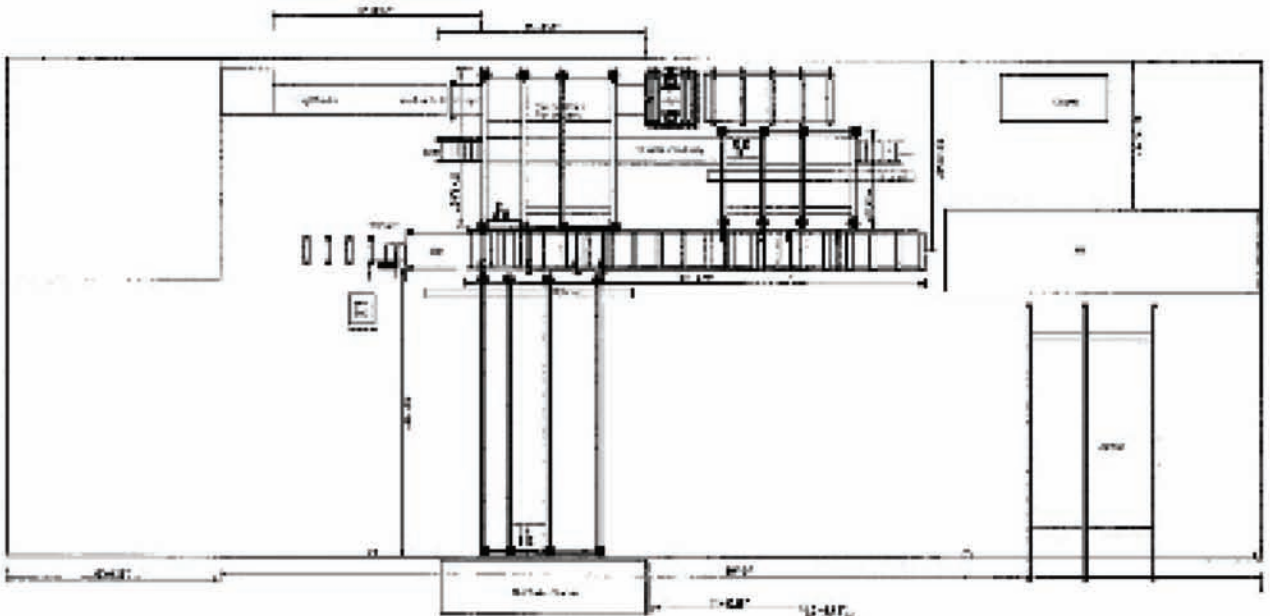


With decades of experience in the sawmill industry, we help sawmills set up for success.

RETOOLING YOUR SAWMILL?

Let us help with the following:

- ✓ New mill design and layout
- ✓ Trade-ins for used equipment
- ✓ Consultation on setup and efficiency
- ✓ One package equipment price for all
- ✓ Choose your favorite brands of equipment
- ✓ Existing mill upgrade



Call John Yoder: 260-633-4047 x5
jy@showcaseequipment.us

206 E Vine St., Wolcottville, IN 46795
ShowcaseEquipment.us



ShowcaseEquipment.us

DON'T KNOW WHERE TO START?

We provide complete sawmill setups with layouts and prints.



Wooster, OH



Loganville, WI



Wooster, OH

TESTIMONIAL:

"Showcase Equipment delivered on its promise of excellence with the 'Showcase Rebuilt' Mellott debarker we procured. Not only did it come with a warranty, but the pricing was remarkably competitive compared to the new alternatives. The availability of the equipment precisely when needed has fortified our trust in Showcase."

SINCERELY PLEASED CUSTOMERS AT EMLENTON PA

Turn your equipment into **cash** quickly and **ADVERTISE** your product with *Showcase Equipment*.

Sell Equipment

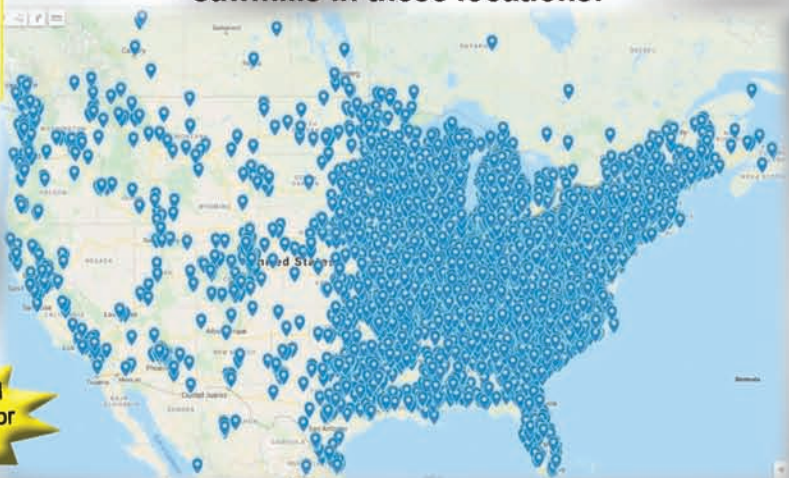
This service is very simple and very straightforward: Your equipment is advertised as an Equipment Listing that includes a photo, price, good description, and your primary contact in Equipment Showcase **Nationwide** in print, on ShowcaseEquipment.us, Machinio.com as well as LumbermenOnline at a low cost.

Display Ads

Equipment Showcase is sent to our dynamic mailing list of over 36,000+ equipment buyers on a rotating basis. The mailing list is comprised of people wanting our catalog by giving us their address. It is mailed free to all subscribers.

Please try to have your ads to Gaylord by the deadlines listed below.

Equipment Showcase goes to equipment buyers and sawmills in these locations!



Issue	Mailing Date	Deadline
March	Mid- February	January 26
April	Mid-March	March 1
May	Mid-April	March 29

Now offering additional digital marketing. Call for details.



Equipment Listing Ads

	Base Price
1 item	\$250.00
3 items	\$225.00
6 items	\$200.00
12 items	\$190.00

Display ads (camera ready)

	1 mon.	3 mon.	Dimensions
1/8 page	\$225	\$175 ea.	3 5/16 x 2 1/2
1/4 page	\$400	\$325 ea.	3 5/16 x 4 7/8
1/2 page	\$650	\$500 ea.	7 5/16 x 4 7/8
full page	\$1100	\$900 ea.	7 5/16 x 9 13/16
premium page	\$1400	\$1100ea.	7 5/16 x 9 13/16
2-page spread	\$2200.00		

Go to ShowcaseEquipment.us for much, much more...



SHOWCASE EQUIPMENT LLC

Call Gaylord:

260.633.4047

Or Email: ads@showcaseequipment.us

Showcase Equipment's staff has decades of experience in the sawmill and forestry industry, and is committed to providing excellent customer service and support.



REBUILT? REDEFINED.

The Showcase Rebuilt Difference

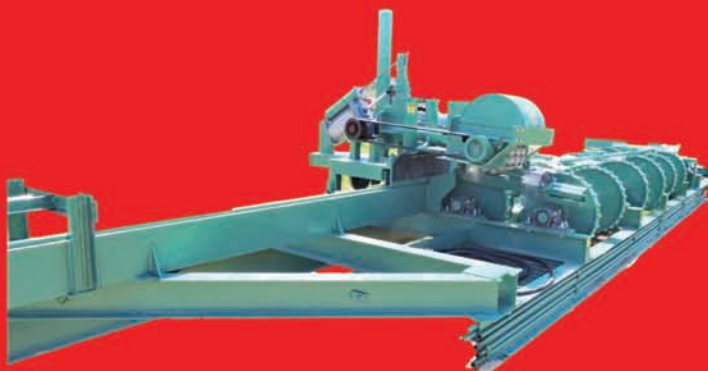
In the sawmill machinery industry, not all rebuilds are equal. Showcase Rebuilt stands out with uncompromising, high-quality, warranted rebuilds. We rebuild your favorite brands of equipment and focus on making our Showcase Rebuilt equipment to consistently match- and occasionally surpass- new equipment. As our customers will attest, durability is just as robust as new equipment, providing long-term reliability.

Each machine we refurbish comes with a strong warranty, offering confidence in its performance. Our customers say that our rebuilt machines are as good as new, but more affordable. Choosing Showcase Rebuilt also means avoiding the long wait times associated with new equipment. With Showcase Rebuilt, you get exceptional quality, better prices, and quick access, ensuring your operations run smoothly.

TESTIMONIAL:

"Our experience with Showcase Equipment's 'Showcase Rebuilt' HMC debarker has been exceptional. True to their word, the equipment was exactly as described, accompanied by a warranty for added peace of mind. The cost savings compared to a new purchase were significant, and the prompt availability further solidified our satisfaction at GK Sawmill-MO."

HIGHLY SATISFIED CUSTOMERS AT GK SAWMILL-MO.



COMPARATIVE ANALYSIS

New Equipment vs. Showcase Rebuilt Equipment





SUPREME

MFG



From one piece, to a complete set-up!

- Log Decks
- Rollcases
- Transfer/Green Chains
- Belt Conveyors
- Lumber Carts

We have standard sizes in stock for immediate shipment!

Top Quality, Great Value

Custom sizes available on all equipment!

To place an order or more info contact John:
Ph: 260.633.4047 ext 5 Email: jy@showcaseequipment.us
206 Vine St, Wolcottville, IN 46795



Log Decks - in stock



**Lumber Carts -
in stock**



Rollcases - in stock



Greenchains - in stock

To place an order or more info contact John:
Ph: 260.633.4047 ext 5 Email: jy@showcaseequipment.us
206 Vine St, Wolcottville, IN 46795



SHOWCASE
SHIPPING



**Need trucks?
Let us help!**



*Hot Shot • Flat Bed • RGN
Step Deck • Conestoga*



*Full load • Partial Load
LTL • Oversized*



As a licensed and insured broker, Showcase Shipping handles all the logistics for Showcase Equipment and for anyone else who needs freight shipping.

Contact Benny for a free estimate!

br@showcaseequipment.us

260.599.8397

MC: 1446797

USDOT: 3915661

We'll get it there from anywhere!

Trojan TRACKS **BRIDGESTONE** **camoplast solideal** **TNT**

PROWLER EXT Pattern
SUMMIT SUPPLY ZigZag Pattern

TNT MANY MORE ATTACHMENTS AND TRACKS AVAILABLE

C Pattern Multi Bar Pattern
BD Pattern Block Pattern

GRAPPLE AUGER
LOADER BUCKET
BALE SQUEEZER
ROTARY TILLER CID: HEAVY DUTY PALLET FORKS
CID: BRUSH CUTTER

JOE TRACK SALES
467 Narrow Way RD, Jonesville VA 24263
Ph: 606-206-0503
Fax: 606-262-3560
Email: tracksales@upwardprint.com
We accept major credit cards.

VISA MasterCard DISCOVER

Save money!

Time is money, having the proper equipment to finish the job faster will keep you a cut above the competition!

A.G. Trucut, LLC
40045 Dorn Road,
Centerville, PA 16405
716-499-6698

Financing Available - 513-293-4480

Why Quiet Kut?

The Quiet Kut Grinders is an Extremely Heavy-Duty machine with solid 1/2" Thick Plasma Cut Mainframe. With Plasma and Laser cut parts, it's well put together to last for years

The Quiet Kut Grinders is designed to grind slab wood, edgings, floor sweepings, bark, re-saw trash, and waste in general from sawmills, furniture and pallet facilities. These grinders are an excellent addition to any sawmill operations because of its ability to affordably convert waste products that originally were going in the landfill or being burned into a valuable, useable bedding. This bedding is highly popular for dairy and equine bedding applications because of its high absorbability.

Available Grinder Power Components:

- Electric Powered Infeed - Mechanical Powered Infeed
- Hydraulic Powered Infeed

Available Grinder Sizes:
(Base Model Pricing)

- 8" (KD) Kiln Dried Quiet Kut Grinder
- 12" Quiet Kut Grinder
- 16" Quiet Kut Grinder
- 20" Quiet Kut Grinder
- 24" Quiet Kut Grinder

Patent Pending

Optional Component:
50HP Electric W/ Soft Start

AG Tru Cut
814-694-2192
Office Hours: Monday to Friday - 8:00AM - 3:30PM
Address: 40045 Dorn Rd. Centerville PA -16404

Owner - Steven Troyer | Sales - Cameron Saxton | Parts - Noah Byler |
Office Manager - Cameron Saxton

LYNX LXD/1000T SKIDSTEER

Mini Skidsteer with a 12 month or a 1000 hr. warranty

Smooth joystick operation

25 hp Kubota Diesel

1000 lb. lift capacity

41" from the outside-to the outside of the tracks.

Call for prices - Possible discount available

Free delivery within 250 miles

Burkholder Farm Supply
53435 St. Hwy. V
Knox City, MO. 63446
PH: 660.346.1723

AC Accu-Cut EDGER

A Cut Beyond

Up your **PRODUCTION** with an **ACCU-CUT**

Accu-Cut Board Edger features: Now improved! With auto tracking feed belt system, plus heavier shaft and bearings throughout the whole machine! Mechanical feed option comes with improved on-the-go speed adjustment giving you a whopping 100-300" feet per minute feed speed.



Financing available for this machine for as low as \$2.00 per hour. CALL TODAY TO LEARN HOW

Don't forget, this machine is totally customized with many bolt-on options such as:

- Blower System
- Laser Lights
- Hydraulic Options
- Power options & much, much more.

BUILT JUST FOR YOU!

We specialize in a heavy duty machine with many bolt-on options.



6586 DECKERVILLE ROAD • DECKER, MI 48426 • 989.872.2391 or 517.852.2115

**DJM
SALES**
LLC

Belts! Belts! Belts!

All Types of Conveyor Belting

Large Inventory
Most Belts
Ship in 24 hrs!

Specializing in Sawmill & Wood Industry Belting

- Resaw Belting
- Wide Belt Sander Belts
- High Speed Belts
- Nylon Core Belts
- Aggregate Belting
- Food Grade Belts
- Grain Belts
- Baler Belts
- Merger Belts
- Potato Belts
- All Types of Agricultural Belts
- Flexco Lacing & Lacers
- Harness Shop Belting



We also offer: Custom Cleating • Endless Vulcanized Belts • Cut Parts • Custom Fabrication & More

Not sure what you have? Give us a Call!

Prompt Service – Competitive Pricing

All Products for Belt Drive Systems

We Strive to Sell Only #1 Quality Belting!

15736 Burton Windsor Rd. Middlefield, OH 44062
1-440-632-3427 • 1-440-632-0299 • 1-440-632-0617



We Ship UPS & Truck Freight Daily

Industry's Most Trusted Source



Ben Jones Machinery

Div. of Dickert Enterprises, Inc.
Industry's Most Trusted Source

260-239-8686

Wes Graber, Sales

wgrab@benjones.com



Financing Available!



Main Office: 800-241-8983

Don't See What You're Looking for Here? Search our Complete Inventory at www.benjones.com



USA

EAGLE CLAWS



OHIO

~9/32" available now~





~5/16" coming soon~





\$398 PER BOX

Showcase Equipment: 260.633.4047



ECHO Enterprise

2001 County Rd. 137 Hector, NY 14841

**Manufacturing • Welding
Saw Mills • Equipment**

Andy M Stoltzfus

315-694-8141

Sawmill Bandwheels

- Machined from A36 Steel Plate.
- Much longer crown life.
- Little or no blade breakage with 40" diameter wheels.
- Drive wheel heavier than idler wheel to eliminate blade deflection when starting into logs at a higher feed rate.
- Heavier wheels for better blade speed consistency.
- Spin balanced for zero vibration.
- Extremely precise rooftop crown.
- Get it on our 45HD mills.
- Perfect Upgrade for your Timber Buddy Sawmill



Very Heavy Duty!

40" Bandwheels 2" Blade
6" x 8" Main Beams Custom Lengths

Call for a free Brochure



ECHO Enterprise

2001 County Rd 137 Hector, NY 14841 Ph. 315-694-8141

Bandwheel dia. / Center bushing Type / Blade crown

Part # Example: **40 | 2 | 2**

Part #	Description	Price
40J3	Bandwheel Set	\$7,600.00
40J2	Bandwheel Set	\$7,000.00
30E3	Bandwheel Set	\$5,200.00
30E2	Bandwheel Set	\$4,800.00
30E1 1/2	Bandwheel Set	\$4,800.00
26E2	Bandwheel Set	\$4,700.00
26E1 1/2	Bandwheel Set	\$4,700.00

www.exporichmond.com

MEADOW EVENT PARK • DOSWELL, VA

300 exhibitors to see indoors and outdoors at the largest expo of its kind on the East Coast! Come see the latest and greatest in forestry equipment up close and personal at our **NEW VENUE!** Featuring the loader comp, live demos, educational classes, food trucks, and much more.

(804) 737-5625 • info@exporichmond.com



APRIL 12-13-2024

Fun for the entire family!

REGISTRATION NOW OPEN!

Sponsored by Virginia Forest Products Association & The Cooperative Extension Service at Virginia Tech

LET YOUR IMAGINATION BE OUR CHALLENGE

Custom Built
Machinery
To Fit Your Needs!



Stave Saw



Mechanical Truss Press



Brubacher Band Saw Blade Sharpener



Truss Saw



Brubacher Band Saw Blade Roller



All-Mechanical Grade Resaw with Hand Set Works and Board Separator Built to Fit Your Needs



Slab Saw



Brubacher Band Saw Blade Setter

Hershberger 
MANUFACTURING & SALES

7690 Banks Road • Gainesville, New York 14066
Call 585.567.4341 between 9:00 to 9:30 AM

Delivery Of All Machinery Is Available

Line Laser Solutions

- Headsaws
- Portable Bandmills
- Straightline Rip
- Edgers
- Metal Shears
- Any marking you need!

Available in

- Green
- Red
- 30mw
- 120mw
- 120v AC
- 12v DC
- Battery adaptors

MX
Complete setup Kit \$129

Ultimate
Complete setup Kit \$269

Call for more info!!
606-278-2014
1143 Evergreen Rd.
Falkville AL 35622

Hidalgo LASERS

Jones Saw Tools

Circle Saw Grinders
Cordless, AC & Air
Slasher Saw Grinders
Cordless Slasher
Chain Sharpeners
Headsaws Edger Blades
Carbide Bits Shanks
Diamond & Grit Wheels
Saw Wrenches & Pins
Tooth Stops Tooth Rests
Guide Pin Bar Stock

Model 6P Air Grinder

\$520
w/ Grit Wheel

\$630
with
Diamond Wheel

AC, Air or Flex-Shaft.

Jones Saw Tools Model 7C

Cordless Circle Saw Grinder

\$460
w/Grit Wheel
for steel bits.

\$540 w/Diamond Wheel
for carbide bits.
Sharpens Headsaws & Edgers.

Drill not included.
Powered by customer's
own cordless drill.

Cordless drill
package with
Drill, Battery
& Charger.
\$120

812-354-6981
cynthiajj1@gmail.com

FORKLIFTS FOR SALE

Service, Parts and Rentals

This is just a partial listing. Call for full list.

	<p>CAT DP50N1 11,000 lb. cap. 2018 Diesel 2,737 hrs.</p> <p>\$48,900 UNIT #3139</p>		<p>Toyota 8FG45U 10,000 lb. cap. 2016 LPG 6,398 hrs.</p> <p><small>Price does not include LPG tank</small></p> <p>\$44,900 UNIT #3120</p>		<p>CAT DP40N1 8,000 lb. cap. 2015 Diesel 2,832 hrs.</p> <p>\$42,900 UNIT #3165</p>
	<p>Toyota 8FGU30 6,000 lb. cap. 2017 Dual Fuel 1,171 hrs.</p> <p>\$34,700 UNIT #3145</p>		<p>Unicarriers PFD60M5 6,000 lb. cap. 2018 Diesel 4,499 hrs.</p> <p>\$27,900 UNIT #3118</p>		<p>Toyota 8FGU25 5,000 lb. cap. 2011 LPG 4,509 hrs.</p> <p><small>Price does not include LPG tank</small></p> <p>\$23,900 UNIT #3114</p>
	<p>Mitsubishi FG15K 3,000 lb. cap. 2001 LPG 3,036 hrs.</p> <p>\$14,700 UNIT #3095</p>		<p>Nissan KUHGO2A30V 6,000 lb. cap. 1994 LPG 10,432 hrs.</p> <p>\$12,900 UNIT #3151</p>	<div style="border: 1px solid black; padding: 10px; margin-bottom: 10px;">  <p>ITS INDUSTRIAL TECH SERVICE LLC CUSTOMER FOCUSED</p> </div> <p>Formerly Parke County Diesel LLC</p> <p>Shipping Available 6064 N 350 E - Marshall, IN 47859 765.597.2473 Financing Options Available</p>	

WHEELS BUILT TO ROLL

Available in Steel and Rubber Cleats



Wheel Loaders • Construction Forklifts

Designed to handle the extreme ruggedness of the sawmill & logging industry. long-lasting durability



IN STOCK SIZES

Tire Size	Actual Size
36 x 12-20	12" x 36"
33 x 12-20	12" x 33"
31 x 10-16	10" x 31"
30 x 10-16	10" x 30"
26 x 9-16	8" x 26"



Skid Loaders • Farm Forklifts

Designed to eliminate tire problems, this extreme-duty, flat-proof design holds up in the toughest conditions. 3x more wearable rubber than pneumatic tires.



Large Tractors • Compact Tractors

Designed to offer best-in-class grip and durability. Completely round to minimize wear.

JS WELDING
717-803-3635

KEIM HYDRAULICS LLC

- Custom Power Units
- Pump Motor & Cylinder Repair
- Shop Installations
- Hydraulics & Air Systems



FAST PIPE
BY RAPID RISE

Royal
OIL CO.

Parker

18748 200th St. • Bloomfield, IA 52537
Ph: 641-208-5346 • 641-664-KEIM

5 Reasons why customers choose landstar



1. Reliable Capacity
2. Safe Operations
3. Cargo Security Experience
4. Unique Business Model
5. Sustainable Business Practices



We specialize in transportation logistics

- Truckload & LTL
- Heavy & Specialized
- Emergency / Expedited
- Rail Intermodal
- Air & Ocean freight forwarding



Uniquely designed to deliver exceptional logistics solutions. The Landstar network is unmatched in the industry.

LANDSTAR
Agent



Nathaniel Stoltzfus
Phone: 570.660.4246
Email: nathaniel.stoltzfus@landstarmail.com
Website: <http://www.agencymhp.com/>

ARE YOU LOOKING FOR A BETTER PARTS SOURCE?

- ◆ We are a smaller family owned business, and therefore take more care and interest in you.
- ◆ Personable service: we help you solve your problems.
- ◆ We have a huge inventory.
- ◆ Most orders ship the same day.
- ◆ 3 easy ways to buy from us: phone orders, mail-in orders, walk-ins, we're here for you.

- ◆ Belts
- ◆ Pulleys
- ◆ Bearings
- ◆ Sprockets
- ◆ Roller Chain
- ◆ Couplings
- ◆ Oil Seals
- ◆ Gearboxes



Mechanical Drive Solutions
 Exceptional Service, Friendly, Helpful
 N8102 Swamp Road
 Manawa, WI 54949

Call 920-244-7370 to place your order today.



Your Education Doesn't Have To Wait

NHLA's educational programming is developed specifically for the hardwood industry. We offer programs to propel your individual career as well as programs that will contribute to the overall success and profitability of your company.

IF YOU ARE UNSURE OF YOUR NEXT STEPS, CONSIDER THE CHOICES AT THE NHLA INSPECTOR TRAINING SCHOOL.

INTRO TO HARDWOOD LUMBER GRADING

When: March 20-22
 Where: Memphis, TN | NHLA Headquarters

Intro class to gain a basic understanding of the NHLA hardwood lumber grading rules and how the rules affect the value of lumber.

SPC: HARDWOOD STATISTICAL PROCESS CONTROL COURSE

When: April 1-4
 Where: Memphis, TN | NHLA Headquarters

Join us for a comprehensive 3-day course designed to empower your team with the essential steps to implement your own Yield Improvement program. Learn statistical process control techniques tailored to the hardwood sawmill environment, a proven methodology developed by our expert, Chief Inspector Dana Spessert.

ITS ONLINE TRAINING PROGRAM MODULE 1

When: April 8-19
 Where: Memphis, TN | NHLA Headquarters

Two weeks of hands-on training.
 Module 2: Online study
 Module 3: Three weeks hands-on training and final testing at NHLA headquarters.

To enroll and learn more please visit www.nhla.com/education.
 Have questions? Call Geoff Webb at 484-695-9029 or email g.webb@nhla.com.

- Carriage & Hex Bolts • Nuts & Washers
- Screws • Lags • Tapcons • Screws

PINE VALLEY BOLTS

UPS AND MAIL SHIPPING AVAILABLE

No catalog available
We can ship UPS or mail

OVER 100 FISKARS ITEMS AVAILABLE

Prices subject to change without notice

Black Hatchets & Axes

- 14" hatchet - \$25.00
- 28" ax - \$50.35
- 36" ax - \$59.65

Orange Hatchets & Axes

- x 7 hatchet - \$33.05
- x 11 hatchet - \$35.50
- x 15 ax - \$40.00
- x 25 ax - \$49.75
- x 27 ax - \$65.05

Tin Snips

- Offset Right Cut - \$17.25
- Offset Left Cut - \$17.25
- Straight Cut - \$15.00
- Right Cut - \$14.50
- Left Cut - \$15.00
- Bull Dog - \$15.50

1/4" Quick Links \$0.60



Glider

Blue • Green

\$62.75 (with bracket \$92.25)



Bolt Cutters
36" - \$130.00
30" - \$66.00
24" - \$57.75
14" - \$31.50

Price: \$22.25



Price: \$10.75

Price: \$25.00



Baby Swing Seat
Green • Blue
\$31.00



Belt Swings
Yellow • Green • Blue
\$9.50

S.S. Swing Hangers

\$6.25



Glider Hanger

Green • Blue

\$39.75



Tire Swing Swivels

\$14.75



1/4 x 3 1/4 Pear Shaped Quick Links

\$0.70

Swing Springs

\$6.00



6" & 4" Swivel bolts

\$2.75



Two & Four Swing Hangers

\$7.50

3/16" S.S. Chain

\$2.85 per foot



3/16" Zinc Chain

\$0.90 per foot



Tire Swings

Green • Blue

\$46.75



2" Swivel Lags

\$1.75



54" Coated Chain

Yellow • Green • Blue

\$14.75



Bucket Swings

Green • Blue

\$39.00



Cant Hook

- XCH060 - \$135.75
- CH048 - \$106.50
- CH042 - \$103.00
- CH036 - \$96.75
- CH030 - \$89.75
- CH024 - \$85.50

Log Peaveys

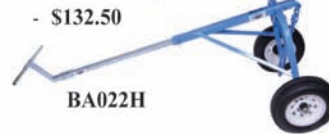
- XPV60 - \$135.75
- PV048 - \$106.50
- PV042 - \$103.00
- PV036 - \$96.75

Mill Specials

- MS036 - \$101.50
- MS030 - \$95.25
- MS024 - \$87.50

Log Carrier

LC054 - \$132.50



Hookaroons

- HR036 - \$61.00
- HR030 - \$56.00

Log Scale

- LS136H - \$58.75
- LS136 - \$47.75

16" and 25" Tong

- TS25R - \$154.75
- TS16S - \$109.25

Cant Hook Jack

ULS006 - \$37.75

Replacement Hooks

- RH001 - \$30.00
- RH002 - \$37.75

Replacement Tips

- RPV01 - \$16.75
- RTH02 - \$16.00
- RTH01 - \$13.50

5195 Kinsman Rd. • Middlefield, OH 44062 | 440-693-4232

EXHAUST GAS HEAT EXCHANGERS



Exhaust to Water Heat Exchanger

- Recover wasted exhaust heat
- All stainless construction
- Pressure tested

We are Looking for Dealers

Dealers

Leid Diesel Service Thorp, WI 715-669-3799	401 Engine Millersburg, OH 330-763-1441	Gen Tech Generators LLC Ephrata, PA 717-656-4853
Leid Diesel Service Sheridan, MI 616-754-5871	Troyer Engine Fresno, OH 330-897-2805	

STAINLESS STEEL FUEL TANKS

No rust in your fuel

Dealers

Timberview Sales Drakesville, IA 641-722-3100	Pine Valley Bolts Middlefield, OH 440-693-4232
Sheetz Marketing Coshocton, OH 740-622-9063	East Brook Tarp Shop 888 Bowden Rd New Castle, PA



SUPERIOR METALWORKS

CUSTOM FABRICATION IN STAINLESS STEEL & CARBON STEEL
5673 COUNTY ROAD 59, MILLERSBURG, OHIO 44654
superiormetalworks@upwardmail.com

Call for Brochure & Prices — Ph: 330-674-3358 Fax: 330-674-3359

WHEN CONSISTENCY MATTERS...



...DEPEND ON:

ASK FOR
YOUR FREE
BROCHURE

In todays markets it all comes down to consistency, accuracy & efficiency We'll help you get that. Call us today, we can help you and WOOD love to

XP-380 Sawmill
fully hydraulic
high production
starting at:
\$64,900.00

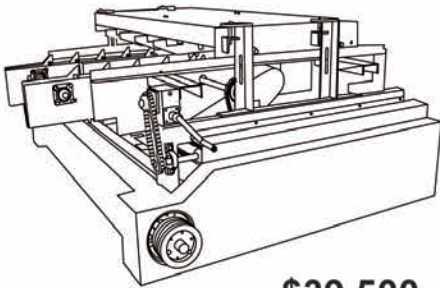
MP-362
Production manual
pushmill
starting at:
\$16,500.00

MP-360
Manual hobby
pushmill
starting at:
\$11,800.00

Timber Buddy LLC
5571 State Route 414
Romulus, NY 14541
Call us today:
607-882-3010

Heavy Duty Double Head Stringer Notcher

Lineshaft
Ready



\$39,500

"We can do more production
with less labor with an
Evergreen notcher than any
other notcher we have used."
- A Happy Customer

Next unit available by February 15

- ◆ Over 3000 stringers per hour.
- ◆ Easy to use handcrank Head Adjustment to save time.
- ◆ Capacity: 32" to 84" stringer length.
- ◆ Notch depth is easy to adjust from 0" - 1 3/4" deep.
- ◆ This unit is built from heavy wall steel to stand up in harsh conditions and last a long time.
- ◆ Premium quality indexable spiral heads.
- ◆ Premium quality bearings on all high speed shafts.
- ◆ Premium quality roller chain feed.
- ◆ Add value to your product.
- ◆ Shielded for your safety.
- ◆ Machine dimensions: L. 121"x W. 112" x H. 52"
- ◆ Machine weight: Approximately 4,800 lbs.

*Write us for a
FREE catalog!*

*These notchers are operating in several states.
Ask to see one in operation.*

We also offer:

- ◆ Belts
- ◆ Pulleys
- ◆ Bearings
- ◆ Clutches
- ◆ Gearboxes
- ◆ Drive Design
- ◆ Extensive Inventory
- ◆ Daily Shipping
- ◆ In-house Machining



Evergreen Sales & Service
Machining & Power Transmission
S1106 County D
Cashton, WI 54619

Board Edger
Custom Built to your needs

Standard Features:

- *36" wide Flat Belt Fee
- *3 - 5 1/2 overhead rolls
- *16" carbide tip
- * Split blades on 2 1/4 shaft
- * 4" or 8" drop deck
- * Sliding drop deck table

Adjustable speed feed rolls (optional)

Also available in 30" wide

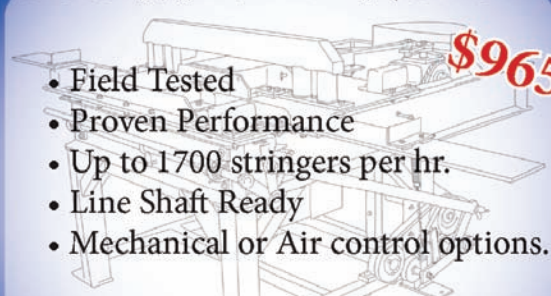
Weavers's Edger MFG
6610 140th Ave
Stanwood, MI 49336



Ivan Mast
434-404-1694
www.mastequipment.com
South Boston, VA



WOOD MASTER NOTCHERS



\$9650

- Field Tested
- Proven Performance
- Up to 1700 stringers per hr.
- Line Shaft Ready
- Mechanical or Air control options.

Weaver Machine Shop
13150 7 Mile Rd, Stanwood, MI 49346

HEAVY DUTY FLOATING LOGGING FORKS

Compact Skid Loader Logging Forks



Down position



Up position

- WEIGHS #1030**
- 2⁵/₁₆" BALL**
- CHAIN HOOK**
- D-RING**
- FLOATING FORKS**
- FORK RATING #12,000**
- 6" WIDE FORKS**
- 4 GREASE POINTS**



10668 CR 16
Middlebury, IN 46540
Ph: 574-825-4856
Fax: 574-825-1617



**Need a little help with
your worn out parts?**



**CALL OR STOP IN AND SEE
HOW WE CAN HELP YOU**

HERSHEY MACHINE LLC

5502 SR 557
Millersburg, OH 44654

Phone: 330-674-2972
Fax: 330-674-2973
Email: sales@hersheymachine.com

Same Day Delivery... Order before 9:00 Receive the Same Day!

COMING IN 2024!

Expanded Line of Services to Better Serve You

-  PTO Forecart Sales & Service
-  Sawmilling / Millwright Services
-  Diesel Skid Units & Hydraulic Setups
-  Heavy Equipment & Diesel Engine Repair
-  Machinery Conversions
-  Custom Fabrication & Designing

Call for more information!

231-734-9745



SW35
Arabian Series



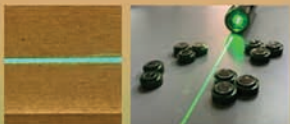
**STOLTZFUS
WELDING**
Sears, MI 49679

UMBERLINE LASER, INC.

Designed & Manufactured in the USA Since 1985

- All Lasers Have a 24 Month Warranty
- All Lasers are Fully Rebuildable.
- 24 Hour Sales & Rebuild Fulfilment.
- Low Voltage AC & DC Power Options.

- Minimize Downtime with Lasers & Hardware Built for the Toughest Mill Environments.
- Equal Intensity Line Options for Red & Green Available in multiple fan angles.



Lasers & Hardware Built for Industry

- Primary & Secondary Wood Processing
- Portable Sawmills
- Bridge Saws
- Robotics & Machine Vision
- Safety Lines for OSHA compliance.

RED Lasers in:
5, 10, 15, 20 & 30mW
GREEN Lasers in:
5, 10, 30 & 50mW



- Moveable Edger Assemblies.
- Gang Ripsaw Racks in three rail configurations..
- Stationary Mounting Hardware.

sales@lumberlinelaser.com | toll free 855-686-3077 | www.lumberlinelaser.com



**Call Myron:
574.742.4546**

Deadline to consign for the
March IronRing auction is
February 27th.

**Online &
Phone Bidding
Only!**

Seller: Various Consignors



**February 14th
9 AM EST**

**Late Model
Equipment!**



2018 Volvo EC480EL Excavator
Fort Wayne, IN



2017 Doosan DL220 Wheel Loader
Belleville, PA



2022 New Holland Work Master 105
Tractor - Goshen, IN



Caterpillar D8T Dozer
Morgantown, WV



2022 Bobcat T76 Skid Steer
Spring Valley, MN



2022 Cat 239D3 Skid Steer
Millington, MI



2022 Takeuchi TL8R-2 Skid Steer
Middlefield, OH



2023 Lynx LXD-1000T Mini Skid
Steer - Canfield, OH



2017 Dieci I9.44C Telehandler
North Tonawanda, NY



1999 MC American Eagle Forklift
Belleville, PA



TCM FG25T6 Forklift
Lancaster, PA



2011 Hitachi ZX650LC-3
Excavator - Lake Lynn, PA



2021 John Deere 50G Excavator
Millington, MI



2013 John Deere 848H Dual Arch
Grapple Skidder - Middlebury, IN



2007 John Deere 548GIII Grapple
Skidder - Panama, NY



2012 Komatsu XT445L-2 Track
Cutter - Canfield, OH



2004 Peterson Pacific 4710B Track
Horizontal Grinder - Freehold, NJ



2022 Bandit 90XP Wood Chipper
Millington, MI

**Quality
Equipment!**



2015 Volvo VNM Semi Truck
Wawaka, IN



2012 Mack GU813 Truck
Bristol, IN



2007 International 4300 Flatbed
Truck - Wirtz, VA



New 2023 Timber Buddy XP 380
Bandmill - Romulus, NY



2008 Iveco 12.9L Genset
Belleville, PA

**Much
More!**

BRIGHT STAR
AUCTIONS



2022 Wood-Mizer LT50 Portable Bandmill
Loogootee, IN



Frick TD-01C Timber Tiger
Carriage - Belleville, PA



AC32100007 574.825.0704

13% online buyer's premium. Payment:
Cash, check, credit card, wire transfer.

**Bid
Your
Way!**

- Online Bidding: brightstarauctions.com
- Phone Bidding: Call 574.825.0704 to receive a FREE Bright Star Bid Book.



Call Zak:
260.221.2628
or Bronson:
574.210.3721

Michiana Equipment Auction



February 23rd - 9 AM EST

Ring 1 - 9 AM
Ring 2 - 10 AM

No Minimums!
No Reserves!

Still Accepting
Consignments!



2018 New Holland C232 Skid Steer



Allis Chalmers ACPL-70-24 Forklift



2014 Takeuchi TW40 Wheel Loader



2016 Case 321F Wheel Loader



Bomag Tandem Smooth Drum Roller



2017 Wood-Mizer LT28 Portable Bandmill



5) New 40' High Cube Multi-Door Shipping Containers



New Bastone Mobile Expandable Prefab House



2001 GMC C7500 Truck



Clark GCS25MB Forklift

BRIGHT STAR
AUCTIONS

Consign Now!



Lots of New Skid Steer Attachments!



2019 Utility Trailer



Komatsu 200 Excavator



AC32100007 574.825.0704

10% onsite buyer's premium. Payment:
Cash, check, credit card, wire transfer.

Bid

Live Onsite: 11751 CR 12 Middlebury, IN 46540

Your Way!

Online Bidding: brightstarauctions.com

Phone Bidding: Call 574.825.0704 to receive a FREE Bright Star Bid Book.



SELL YOUR EQUIPMENT

36,000+

Copies mailed
nation wide
(on rotating basis).

Increasing daily!

FAST!

ADVERTISING
DEADLINE: WEDNESDAY
MARCH 1ST

Equipment Listing Ads

	Base Price
1 item	\$250.00
3 items	\$225.00
6 items	\$200.00
12 items	\$190.00

Display ads (camera ready)

	Base Price	Dimensions
1/8 page	\$225.00	3 5/16 x 2 1/2
1/4 page	\$400.00	3 5/16 x 4 7/8
1/2 page	\$650.00	7 5/16 x 4 7/8
full page	\$1100.00	7 5/16 x 9 13/16
premium page	\$1200	7 5/16 x 9 13/16
2-page spread	\$2000.00	



**EQUIPMENT
SHOWCASE**

Call or Email
Gaylord for details:
574-536-1646

ads@showcaseequipment.us

**Call Eugene:
574.622.8953**

Consign now to the March Appalachian auction! Pictures show some exciting early consignments with much more equipment expected to come in. Free advertising to a global audience!

**No
Minimums!
No Reserves!**

Seller: Various Consignors



Appalachian Equipment Auction

**March 14th
9 AM EST**

**Don't Wait!
Call Eugene
TODAY!**



2023 International HX620 SFA Truck



2024 International HX520 SFA Truck



2013 John Deere 750K LGP Dozer



2017 Cat D6T LGP Dozer



2007 John Deere
750J LT Dozer



Morooka Tracked Off
Road Truck



John Deere 772CH Series II
Motor Grader



2014 John Deere 848H
Log Skidder



2014 Cat 545C Log Skidder



2012 Cat 545C Log Skidder



2013 Cat 545C Log Skidder



2015 John Deere 245G
LC Track Cutter



Cat 320D FM Track Cutter



Cat 320D FM Track Cutter



2014 Cat 559C
Knuckleboom



2022 International HX520
SFA Semi Truck



1991 Chevrolet C70
Kodiak Fuel Truck



2022 International
HX520 SFA Truck



2014 International
DuraStar 4300 SBA Truck



2022 Chevrolet 2500 HD
Service Truck



2016 Chevrolet 2500 HD
Service Truck

**Quality Equipment
Already Consigned!**

**Featuring the
S&W Logging
Liquidation!**



2022 McLendon Log
Trailer



2023 Pitts Log Trailer



2023 Pitts Log Trailer



2022 McLendon Log
Trailer



2018 McLendon Log
Trailer



2019 Talbert Log Trailer

**Quality Consignments
Wanted of Construction,
Excavating, Forestry, Trucks
& Trailers!**



2015 Felling FT12EW Car Hauler



2020 Kauffman Lo-Boy Trailer

BRIGHT STAR
AUCTIONS



AC32100007 574.825.0704

10% onsite buyer's premium. Payment: Cash, check, credit card, wire transfer.

**Bid
Your
Way!**

Live Onsite: Jonesville, NC

Online Bidding: brightstarauctions.com

Phone Bidding: Call 574.825.0704 to receive a FREE Bright Star Bid Book.



Showcase Equipment

206 Vine St
Wolcottville IN 46795

Attention Sawmill Owners: Are you feeling the pinch of the current market downturn? Need to tighten the belt and create some cash? Let us help you turn your sawmill equipment into immediate cash! Whether you're retooling, retiring, or rethinking your business, we provide a hassle-free way to liquidate your assets at the best value. **Make the 'Bright' Choice Today!"**

574.900.2292



IronRing - 1/17/24

Everything went extremely well. We would highly recommend using Bright Star Auctions to anyone who needed an auction company's services. From the diligent work provided by the Kittrells to the day of the event, everything was as seamless as possible. All in all, we give this experience an A++. We wish all Bright Star and the companies with which you affiliate nothing but success going forward. *Owens Lumber Company, Inc.*

Sell with Bright Star to enjoy:

1. Award-winning marketing (*including the exclusive Bid Book*)
2. Absolute integrity
3. Easy Process

Ready to sell?
We're ready to help!
574.900.2292



Michiana Equipment Auction - Middlebury, IN - 12/29/23

Bright Star Guarantee - *If you don't think that we did everything in our power to achieve market value for your equipment, you pay NO commission.*

BRIGHT STAR
AUCTIONS

BRIGHT STAR
AUCTIONS

BRIGHT STAR
AUCTIONS