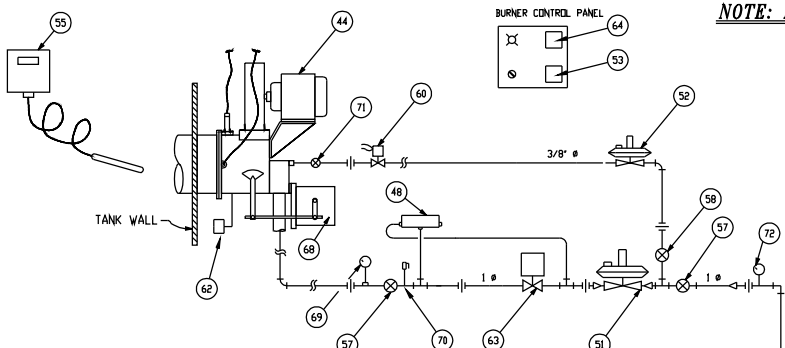
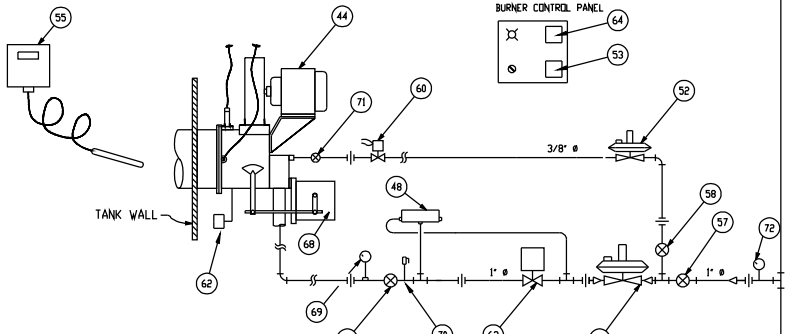


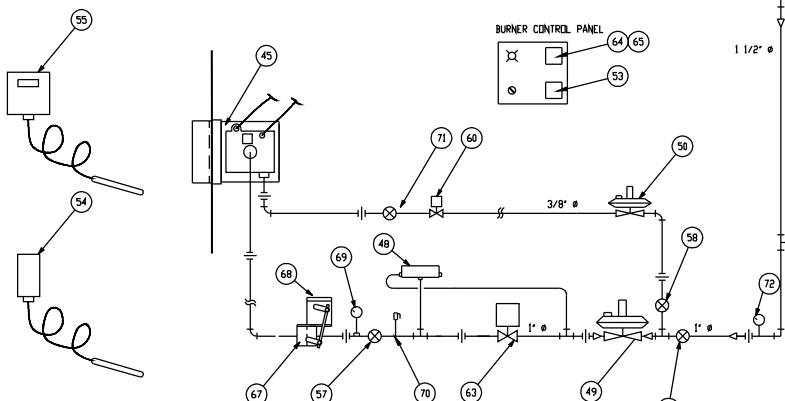
NOTE: DO NOT USE CLOSE NIPPLES



F.M. TUBE-O-FLAME BURNER (GAS)

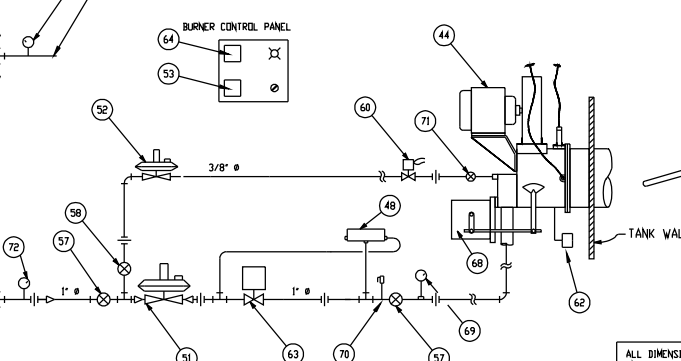


F.M. TUBE-O-FLAME BURNER (GAS)



F.M. AIR HEAT BURNER (GAS)

NATURAL GAS SUPPLY @ 1 PSI
2" NPT INLET
2900 CUBIC FT/HR



F.M. TUBE-O-FLAME BURNER (GAS)

ITEM	SUB	QTY	UM	DESCRIPTION
44	B	3	EA	"MAXON" #27798, BURNER, 6-08 TUBE-O-FLAME BURNER ASSEMBLY, 800.00 BTUH CAPACITY, 1/3 HP, 3450 RPM, FR. #48, 480V-3PH-60HZ MOTOR
44	B	0		NDT USED
44	C	1	EA	"MAXON" #19680, CB&L ASSEMBLY FOR HONEYWELL ELECTRIC CONTROL MOTORS
44	D	1	EA	"MAXON" #16476, MOUNTING RING #16476
45		1	EA	"MAXON" #33802, BURNER, MX-5P MAXIFLEX BURNER ASSEMBLY, 500,000 BTUH CAPACITY, ASS'Y 1/3" HP MOTOR 230/460V/3/60
45	A	0		NDT USED
45	B	1	EA	"MAXON" #34077, MOUNTING PLATE SET (FOR MAXI-FLEX MX-5P)
46		4	EA	"MAXON" #18117, FLAME ROD #18117
47		8	EA	"MAXON" #18722, BOOT, SPARK PLUG,
48		4	EA	"ANTUNES" #HLGP-A, PRESSURE SWITCH MODEL A SERIES, 2-16" WC HI, 1-6" WC LOW
49		1	EA	"EQUIMETER" #143-80-1, GAS REGULATOR, 3/4" NPT CONN, 1 PSI INLET PRESSURE, 3 1/2" TO 6 1/2" W.C. OUTLET PRESSURE DRIFICE=5/8" DIA, 500 CFH, NATURAL GAS
50		1	EA	"EQUIMETER" #043-180-, GAS REGULATOR, 3/8" NPT CONN, 1 PSI INLET PRESSURE, 3 1/2-6-1/2" W.C. OUTLET, 50 CFH, C/W 1/4" DIA DRIFICE
51		3	EA	"EQUIMETER" #122-6, GAS REGULATOR, 3/4" NPT CONN, 1 PSI INLET PRESSURE 3 - 6" W.C. OUTLET PRESSURE, 800 SCFH, NATURAL GAS, RED SPRING
52		3	EA	"EQUIMETER" #043-180, GAS REGULATOR, 3/8" NPT CONN, 1 PSI INLET PRESSURE, 3 1/2-6-1/2" W.C. OUTLET, 80 CFH, C/W 1/4" DIA DRIFICE
53		4	EA	"DONGAN" #A06SA6, IGNITION TRANSFORMER, PRIMARY = 110 V, 60 HZ; SECONDARY = 6000 V

ITEM	SUB	QTY	UM	DESCRIPTION
54		1	EA	"PARTLOW" #NS00056-104-53-10-20, HIGH LIMIT SWITCH, HI-TEMP CUT-OUT, 143 SLOTTED PIPE HOLDER
55		4	EA	"PARTLOW" #LF030-104-51-10-20, TEMPERATURE CONTROL, C/W DIAL #006-017-19
55	A	1	EA	"PARTLOW" #63701003, WELL, STN. STL.
56		5	EA	"PARTLOW" #1431H, PARTLOW 3/8" DIA. SLOTTED PIPE HOLDER
57		8	EA	COCK, GAS 1" 15 PSI # 52-404-01,
58		4	EA	COCK, GAS 3/8" 15 PSI #52-402-01,
59		4	EA	COCK, DRIFICE 3/8" M TO F INLINE
60		4	EA	"ASCO" #8210G74, SOLENOID VALVE, 3/8" NPT, 2 WAY, N.C., BRASS BODY, 110 VDC
61		3	EA	"WATLOW" #8-36-11-1MA, LOW LEVEL CUT OUT SWITCH, 110/1/60, 1" NPT
62		6	EA	"ANTUNES" #JD-2(B), AIR FLOW SWITCH, (.07"- 1.7" W.C.), BLUE SPRING
63		4	NDN	"KJTI" #4630-4, WVDLE 210/6, GAS SAFETY SHUT-OFF VALVE, 1" NPT
63	A	1	EA	"KJTI" #46000-8, CPI, SWITCH
64		3	EA	"ECLIPSE" #VVF560533XA, FLAME MONITOR, NO PURGE CONTROL
65		1	EA	"ECLIPSE" #VVF560523XA, FLAME MONITOR, 90 SEC. PURGE TIMER CONTROL
66		4	EA	"ECLIPSE" #5602-10, BASE
67		1	EA	"ECLIPSE" #500917, 3BV-A, GAS BUTTERFLY VALVE, 3/4" NPT, FULL PORT
67	A	1	EA	"ECLIPSE" #500928, MOTOR MOUNTING BASE & LINKAGE
67	B	0		NDT USED
68		4	EA	"KJTI" #43033-4, EMP 453-4, CONTROL MOTOR, 4-20 MA, 90 DEG STROKE, 40 SECOND TIMING, 220 LB-IN TORQUE
69		4	EA	"MARSHALLTOWN" #G24500-15, GAUGE, G24500-15,
70		4	EA	COCK, GAS 1/4" 2 PSI, USE UP THEN USE 15 PSI COCK, DO NOT REORDER
71		4	EA	COCK, PET 1/4"
72		5	EA	"MARSHALLTOWN" #G22685, PRESSURE GAUGE, 0-3 PSI RANGE, 1/4" NPT

ALL DIMENSIONS ARE IN INCHES UNLESS OTHERWISE SPECIFIED.
UNLESS NOTED OTHERWISE, THE FOLLOWING TOLERANCES SHOULD BE USED FOR ALL CAE RANSCHOFF, INC. FABRICATION

DECIMALS	FRACTIONS 1/16
1 PLACE ±.1	2 PLACES ±.01
3 PLACES ±.001	ANGULAR ±1/2°
4 PLACES ±.0005	

NO.	DATE	INIT.	REVISION DESCRIPTION

CAE CAE Ranschoff

DRAWN BY	DATE	CUSTOMER	TITLE
PAK	10/97	TOLEDO TECHNOLOGIES	24" WIDE CONVEYOR
CHECKED BY	DATE	DRAWING SCALE	SHEET
		1/1	11 OF
PLOT SCALE	DATE	ANGULAR	DRAWING NO.
1/1		±1/2°	318011

THIS DRAWING AND ALL INFORMATION THEREON IS THE PROPERTY OF CAE RANSCHOFF, INC. AND IS CONFIDENTIAL AND MUST NOT BE MADE PUBLIC OR COPIED UNLESS AUTHORIZED BY THEM AND IS SUBJECT TO RETURN UPON DEMAND.