

Barnstead Mega-Pure Glass Stills

Barnstead Mega-Pure Glass Stills effectively remove inorganic solids, organics with boiling points higher than water, bacteria, and pyrogens. The stills are constructed of non-leaching components to ensure high purity water.

Product features

- Contact with only glass, quartz and Teflon™ components ensures ultimate purity and eliminates cross-contamination
- Choice of three production capacities
- Units are easily wall-mounted or bench-mounted
- Vertical condenser design provides maximum purity
- High temperature cutoff shuts down the still if the temperature is too high, preventing heating element burnout
- Quick release cover provides easy cleaning access
- Connection to Automatic Collection System (ACS) allows 24-hour automatic system operation
- Push-button system start with feed water solenoid valve

Barnstead MegaPure-1 Glass Stills

- Compact, easy-to-use 1 L/hr glass still available with or without a storage bottle

Barnstead MegaPure-3A and 6A Glass Stills

- Ideal for larger volume demands with storage and options



Quick look comparison

	MegaPure-1	MegaPure-3A	MegaPure-6A
System features	Compact, easy-to-use	Stills for larger volume demands	
Product water capacity, L/hr	1	3	6
Cooling water capacity, L/hr	11.3	30.3	53
Number of heaters	1	1	2
Resistivity at 25°C, MΩ.cm	1–10	1–10	1–10

Applications include

Routine lab work

- Rinsing lab glassware
- Supplying autoclaves and ultrapure water systems
- Preparing and diluting buffers, reagents, and media

Glass stills ideal for biological applications

Product accessories

Automatic Collection System (ACS)

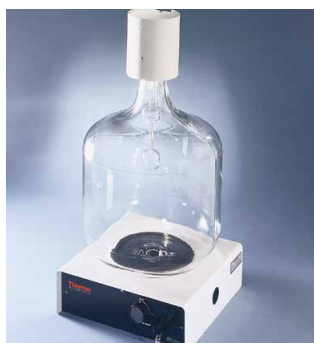
- All glass system designed to collect water from the Barnstead Mega-Pure Glass Stills and control their operation
- Generous 45 L capacity
- Easy wall- or bench-mount
- Preset to shut off the power to the heaters and the water supply to the still after the bottle has collected approximately 45 L
- The system will automatically restart the still and refill the collection system when the purified water supply has been depleted to approximately 38 L

Pretreatment for hard water

- Allows for pretreating feed water to Barnstead Mega-Pure Glass Stills
- B-Pure single- or dual-cartridge deionizer reduces scale build up and increases distillate purity
- Greater flexibility in meeting varying feed water qualities
- Purity light measures water quality and indicates when cartridges are exhausted
- Large cartridge capacity for extended cartridge use
- Unit must be wall mounted



Plastic bottle (413964)



Automatic Collection System



Barnstead B-Pure
Cartridge Holder



13 L bottle (413934)

Barnstead Mega-Pure Glass Stills

Product specifications

Inlet water temperature °C (°F)	Vent temperature °C (°F)	Auto drain	Inlet pressure (psig)	Auto start/stop controls
4-37 (39.2-98.6)	85-96.7 (185-206)	No	20-100	Yes

System options ordering information

	Volume output (L/hr)*	Overall dimensions W x H x D in (cm)	Electrical (50/60 Hz)			Cat. No.	
			Volts	Amps	Phase	Unit	6 L bottle included
MegaPure-1**	1.4	18 x 34 x 9.75 (45.7 x 86.4 x 24.8)	120	9	1	A440266	A440267
MegaPure-3A**	3.4	23 x 45 x 12 (58.4 x 114.3 x 30.5)	240	11	1	A440367	–
			208	13	1	A440696	–
MegaPure-6A**	6	23 x 45 x 12 (58.4 x 114.3 x 30.5)	240	21	1	A440518	–
			208	25	1	A440697	–

* Volume Output for 208 V units can be reduced up to 25 % less than specified. **

Required accessories ordering information

Description	Cat. No.
Storage solutions See Storage Options	
MP-1 Flow Meter (Required for MP-1 units only)	440092

Optional accessories ordering information

Description	Cat. No.
Single-cartridge deionizer Single-cartridge deionizer removes inorganic contaminants. Use with adapter kit to connect to Megapure still. Wall mount only. 7 x 24 x 7 in (17.8 x 61 x 17.8 cm)	<ul style="list-style-type: none"> • D4511 Single B-Pure system; • 331040 Adapter Kit; • D0803 High Capacity Cartridge (Recommended)
Double-cartridge deionizer Provides increased capacity to remove inorganic contaminants. Suggested combination— (2) High Capacity cartridges. Use with adapter kit to connect to MegaPure Glass-Still. Wall mount only. 15 x 27 x 7 in (38.1 x 68.65 x 17.8 cm)	<ul style="list-style-type: none"> • D4524 Double B-Pure system with 50 Kohm light; • 331041 Adapter kit; • D0803 High-capacity cartridge (Qty 2 recommended)
Deionization cartridges	High capacity cartridge Used in B-Pure system; removes ionized solids for extended capacity D0803
	Organic removal cartridge Used in B-Pure for organic and chlorine removal D0813
Dual solenoid Required if using service DI or RO as boiler feed water and untreated (tap) cooling water	MP-1 (240 V), MP-3, MP-6A 440236
	MP-1 (120 V) RY798X2A

**  

Ordering information

Storage options		Cat. No.
Storage bottles For manual operation	Plastic bottle, 6 L capacity For use with MegaPure-1 and MegaPure-3A Glass Stills	413964
	Glass bottle, 13 L capacity For use with any Mega-Pure Glass Still	413934
Automatic Collection System (ACS) For use with any Mega-Pure Glass Still Collects up to 45 L of water and controls the still Dimensions: W x H x D 16.25 x 38 x 16.25 in. (41.3 x 96.5 x 41.3 cm)	Automatic Collection System (ACS) unit	B440704
	Flexible tubing adapter kit Needed when the supplied glass tubing is either too long or too short to reach still; flexible tubing is not included. 0.5 in. Teflon tubing able to handle 80-90°C water is recommended	440138
	ACS wall mounting bracket	400634
	Adapter for ACS washer hook-up for glassware washers	440241

