

Large format UV-curable flatbed inkjet printer

JF Series
JF-1610/JF-1631

Mimaki

Direct printing on large, rigid substrates with brilliant color.



White
ink

Clear
Coat

Dynamic Print JF Series

JF-1610

1,600mm×1,016mm
(63"×40")



JF-1631

1,600mm×3,100mm
(63"×122")



High quality, direct digital printing on large uncoated substrates up to

JF series is a large format, UV-curable inkjet printer with the versatility to print on numerous uncoated substrates including corrugated plastics, acrylics and uneven or irregular materials. With a maximum resolution of 1,200 x 1,200 dpi, JF series is suitable for sign and POP display graphics for both long distance and up close viewing. Using the standard white ink, JF series can print bright, vibrant colors even on transparent and colored media. With the newly developed clear coat, you can achieve a high-gloss finish while also improving color-fastness. JF series is equipped with dual UV lamps, enabling high speed, bi-directional printing. It is a dynamic printer with functions that take full advantage of the flatbeds capabilities. With the JF series, new capabilities in flatbed printing are added to the field of large format graphics.

●●●●●●●●
**1,200×
1,200dpi**
●●●●●●●●

1,200 x 1,200dpi with 7 different dot sizez, delivers high quality prints

Smooth gradations can be created even in 4-color mode, producing a non-grainy finish

The highest resolution of 1,200dpi and the variable dot technology (7 different dot sizes) realize near photographic image quality. Even 4-color mode realizes a non-grainy print. With a minimum dot size of 6pl., sharp edges of small texts and smooth skin tones can be created.

With 6 colors plus white and a clear coat, more beautiful, and bright colors can be realized

**JF
Series**

By using white ink, more vivid images and sharper color contrast can be achieved

White
ink

<Sample prints on transparent acrylics>

6 colors only



Without white ink as a basis for overprinting, the colors are not vivid

6 colors + white ink



With the white ink overlay print, the images are bright and vivid

**JF
Series**

By using a clear coat or vanish, you can get a high-glossy finish

Clear
Coat

The beauty of colors is enhanced and color-fastness is also improved

6 colors only



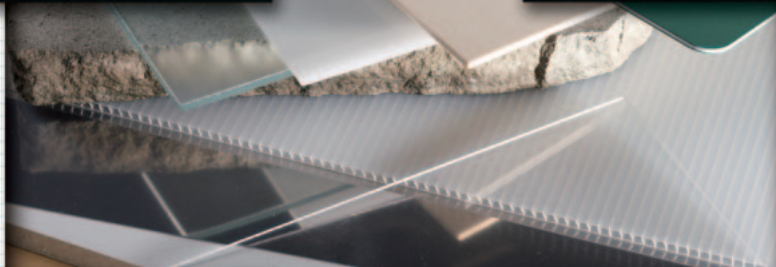
6 colors + Clear Coat



UV-curable ink for a wide variety of materials

With the UV technology, the inks are cured (dried) during print.

Prints can be made on uncoated substrates and the prints can be used immediately.



1.6m x 3.2m (5' x 10'). JF series delivers a new level of productivity.

Superior image quality and printing speeds compared to comparable printers

You can select "high quality printing" or "fast printing" according to your needs



Dual UV lamps

JF series has UV lamps installed on both sides of the carriage, allowing higher production speeds with bi-directional printing. This contributes to the machine's high productivity.



Print speed (600x600dpi & 1,200x1,200dpi, 4-color mode & 6/8-color mode)

		4-color mode (bi-directional)				6/8-color mode (uni-directional)			
		JF-1631		JF-1610		JF-1631		JF-1610	
resolution	pass	m ²	sq.ft	m ²	sq.ft	m ²	sq.ft	m ²	sq.ft
600X 600dpi	4pass Hi	18.4	198	17.5	188	-	-	-	-
	8pass Hi	10.1	109	9.8	105	5.8	62	5.6	60
	16pass Hi	5.2	56	5.0	54	2.7	29	2.6	28
1,200X 1,200dpi	8pass	7.6	82	7.3	79	5.0	54	4.9	53
	16pass Hi	5.1	55	5.0	54	2.7	29	2.5	27

unit:m²/hr.

JF series provides various functions to meet demanding production requirements

The user friendly controls allow you to make full use of the advantages that the flatbed offers



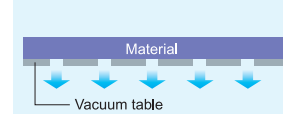
Vacuum table

The vacuum table is divided into six zones. Its activated zones can be set according to the size of materials, thus effectively holding down various sized materials. You can also reverse the air stream to create a blanket of blowing air using the same vacuum holes. As it lifts the substrate, you can move or replace heavy substrate easily and align the position simply and securely.



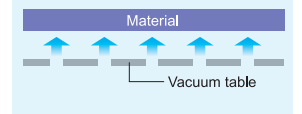
<At the time of vacuum pressure>

The vacuum flatbed with air allows easily misaligned substrates to be fixed securely



<At the time of blowing air>

The substrate is lifted slightly by blowing air, allowing the substrates to be moved easily



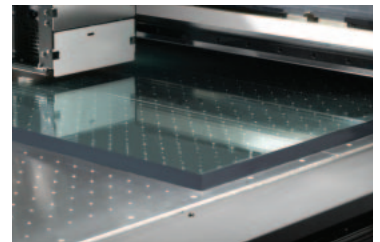
Multiple pre-cut objects can be positioned on the flatbed surface

The materials can be placed independently from each other, enabling accurate positioning of objects. You can print using the entire surface of the flatbed, whether it is one big object or many small objects. Large orders can be handled quickly and efficiently.



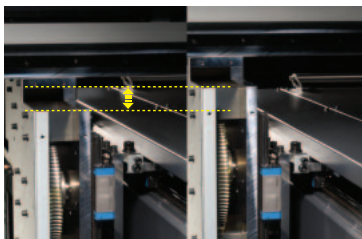
Thick materials

With a maximum printing thickness of 50mm (2"), you can print directly onto thick materials and materials with slightly uneven surfaces.



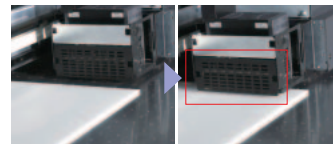
Y-Bar Height-Adjust Mechanism

The electronically controlled Y-Bar Height-Adjust Mechanism allows users to easily adjust the height of the print head for a wide variety of media, thick or thin.



Sensors to prevent head crashes

The jam-detecting sensors prevent head crashes caused by substrates which are bent or warped.



When a material lays flat, the print head moves smoothly.

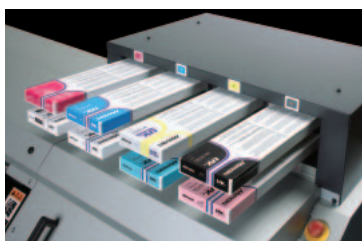


When a material is warped, the print head stops automatically to avoid head damage.



Environment-friendly UV curable ink

Either 8-color or 4-color ink sets can be selected and status of remaining ink is displayed on the operation panel. UV curable ink is free of VOC (Volatile Organic Compounds), is less odorous and thus ensures a cleaner working environment.

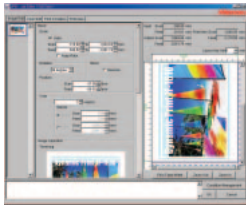


Roll hanger

Roll hanger is equipped to handle flexible or rolled substrates.

*Thin materials, such as paper or film should be tested beforehand, since marks of the place where the vacuum holes are located may remain.

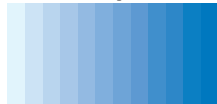




High performance software RIP helps you utilize the various functions of the JF series

- 16 bit rendering eliminates tone jump and produces fine color reproduction.

[8 bit rendering]



[16 bit rendering]



- Different images can be laid out freely on the RIP.
- Versatile editing functions such as tiling, trimming, scaling and rotating are provided.
- Able to network in environments where Windows and Macintosh co-exist.

RasterLink *IP III*

■ Specifications

Item	Specifications	
	JF-1631	JF-1610
Head	Piezo-electric drop on-demand	
Resolution	600 x 600dpi, 1200 x 1200dpi	
Ink	Exclusive UV curable ink (7 colors: Yellow, Magenta, Cyan, Black, Light magenta, Light cyan, White)+Clear	
Ink capacity	400cc /cartridge	
Effective printing area	4-color print mode: 440cc x 2 cartridges /color, 8-color mode: 440cc x 1 cartridge /color	
Perpendicularity	±0.5mm/1,000mm	
Media	size	1,694 x 3,194mm (66.6" x 125.7")
	Thickness	1,694 x 1,080mm (66.6" x 42.5")
	Weight	Less than 50mm (1.96")
Media set device	Air suction by blower	
UV device	Equipped with 2 sets of UV lamp	
Interface	USB2.0	
Applicable standard	VCCI class A, CE Marking, CB Report, UL, RoHS Directive	
Power specifications	AC200/230V±10%, 50/60Hz±1Hz, less than 25A	
Power consumption	Less than 6.0KVA	
Operational environment	Temperature	15°C ~ 30°C (59°F ~ 86°F)
	Humidity	35% ~ 65% Rh
	Accuracy guarantee temperature	18°C ~ 25°C (64°F ~ 77°F)
	Temperature gradient	Less than ±10°C/h (18°F)
Weight	Equivalent to normal office level	
Dimensions (W x D x H)	Less than 1,150kg (2,533lbs.)	Less than 1,050kg (2,313lbs.)

■ Supply items

Product name	Color	Product No.	Remarks
Exclusive UV ink	Cyan	SPC-0371C	1 cartridge: 440 cc (effective volume: 400 cc)
	Magenta	SPC-0371M	
	Yellow	SPC-0404HY	
	Black	SPC-0371K-2	
	Light cyan	SPC-0371Lc	
	Light magenta	SPC-0371Lm	
Clear liquid	White	SPC-0371W-3	
	Clear	SPC-0371CL	

■ Matters to note regarding media and ink

◎ Ink performance of materials

- Post-printing ink property performance (adhesion, weather durability, etc.) varies according to the material.
- If printing materials other than those described are to be used, please test the materials first.
- Adhesion performance differs according to the material. Thus, there are cases in which optimization of ink and anchor coat/overcoat is necessary.

◎ UV lamp

- The lamp is guaranteed by 500 hours.
- The UV lamp illumination level goes down over the time. After 1,000 hours using, the level goes down approximately 30%.

• All trademarks or registered trademarks are the property of their respective owners. • Specifications are subject to change without notice. • Some of the screens and printing samples in this catalog are artificial renderings. • Inkjet printers print using extremely fine dots, so colors may very slightly differ following replacement of the printing heads. Also note that if using multiple printer units, colors may slightly differ among the units due to slight individual differences among the units.

Two sizes are ready according to your applications



MIMAKI ENGINEERING CO., LTD.

TKB Gotenyama Bldg. 5-9-41 Kitashinagawa Shinagawa,
Tokyo 141-0001, Japan Tel: +81-3-5420-8671
trading@mimaki.co.jp www.mimaki.co.jp

MIMAKI USA, INC.

140 Satellite Boulevard NE, Suwanee, Georgia 30024-7128
Atlanta +1-888-530-3988 Boston +1-888-530-3986
Los Angeles +1-888-530-3987 Chicago +1-888-530-3985
www.mimakiusa.com

MIMAKI EUROPE B.V.

Joan Muyskenweg 42-44, 1099CK
Amsterdam, The Netherlands
Tel: +31-20-4627-640
www.mimakieurope.com