



**Technical Details of key Equipment
(Subject to Change) based upon (3) x 750
MW Gas Based Power Plant**

March - 2018

TECHNICAL INFORMATION – KEY EQUIPMENT

SL	DESCRIPTION	UOM	QUANTITY	REMARKS		
1	Gas Turbines and Auxiliaries	Set	6	Complete		
2	HRSg and Auxiliaries	Set	6	Complete		
3	Steam Turbine & Auxiliaries	Set	3	Complete		
4	Condenser & Auxiliaries	Set	3	Complete		
5	Gas insulated Switchyard	Set	14	Complete		
6	Generator Circuit Breaker & Fittings	No.	6	Complete		
7	Generator Transformer	No.	6	Complete		
8	Dry Type transformers	No.	14	Complete		
9	400kV EHV cables	Km	3.5	Cable termination Kit not available		
10	Pre-Fabricated Power House Building Structures (design with 57.5 m/s wind speed)	Ton	12,313	Complete		
11	Gas Turbines Spare parts	Set	1	SL	DESCRIPTION	Quantity
				1	Fuel Nozzle (FN)	1 set
				2	Combustion Liner	1 set
				3	Caps	1 set
				4	Stage 1 bucket (s1b)	1 set
				5	Stage 2 bucket (s2b)	1 set
				6	stage 2 nozzle (s2n)	1 set
				7	Stage 3 bucket (s3b)	1 set
				8	stage 3 nozzle (s3n)	1 set

12	HRSB Spare Parts	Set	1	Complete
13	Air conditioning	Set	1	Partial Supply
14	Ventilation	Set	1	Partial Supply
15	Fire Protection System	Set	1	Complete
16	Compressed Air System	Sets	2	Complete
17	Induced Draft Cooling Tower	Set	3	Complete
18	CW Piping	meter	635	Partial Supply
19	Circulating Water Pumps	No.	6	Complete
20	Pre-treatment Plant	Set	1	Except Shelf life items
21	Chlorination Plant	Set	1	Partial Supply
22	Cooling Water Treatment Plant	Set	1	Complete
23	Effluent Treatment Plant	Set	1	Partial Supply
24	Plate Heat Exchanger	Set	2	Complete
25	Horizontal Pumps	Set	14	Complete
26	Vertical Pumps	Sets	10	Complete
27	Low Pressure Piping	Set	1	Complete

SL	DESCRIPTION	UOM	QUANTITY	REMARKS
28	Butterfly Valves	Set	2	Partial supply
29	Rubber Expansion Joints	Set	2	Complete
30	Stop Log Gates	Set	2	Partial supply
31	Electric Overhead Travelling (EOT) Cranes	No.	4	Complete
32	Misc. Cranes & Hoists	Set	1	Partial supply
33	Fuel Gas Conditioning	Set	1	Partial GT dedicated Fuel Skids are available
34	Service Elevator	No.	1	Complete
35	Instrument Transformer	No.	6	Complete
36	Reactor	Set	1	Complete
37	Start Up Transformer	Set	1	Complete
38	Unit Auxiliary Transformer	No.	4	Complete
39	Wave Trap	No.	4	Complete

40	Lab Instruments	Set	1	Complete
41	Switchyard Equipment	Set	1	Complete
42	Isolated Phase Bus Duct	Set	6	Complete
43	Transmission line Conductors 400 kV	Lot	1	Depending on transmission line distance
44	Electrical BOP Supply	Set	2	Partial Supply
45	HT SWGR	lot	5	Complete
46	Control & Relay Panel	lot	1	Complete
47	LT Cables	lot	2	Depending on layout
48	Aux Transformer (Oil Type)	lot	7	Complete
49	DCS	lot	1	Offered for one Module only, without any upgrade
50	Station C&I	lot	1	Partial Supply

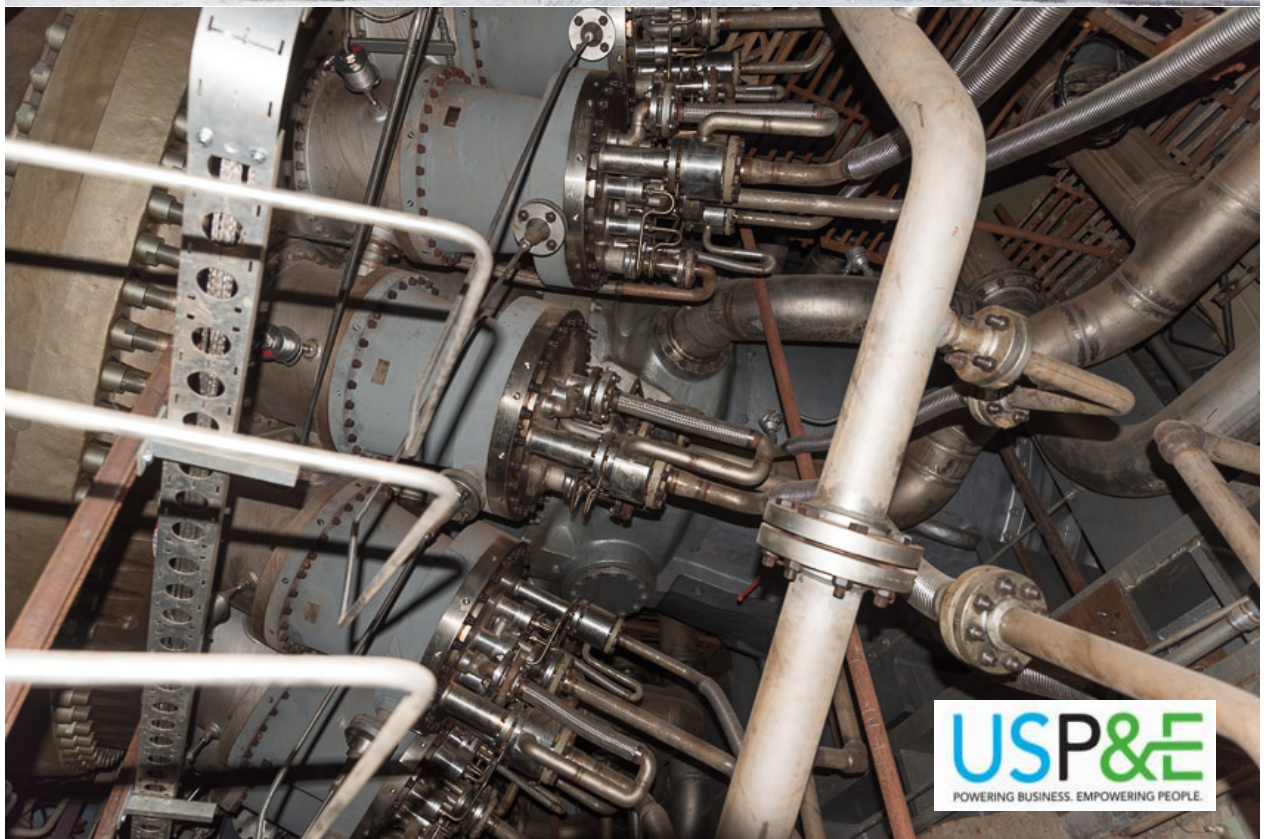
Privileged & Confidential

On-Site Photos of key Equipment



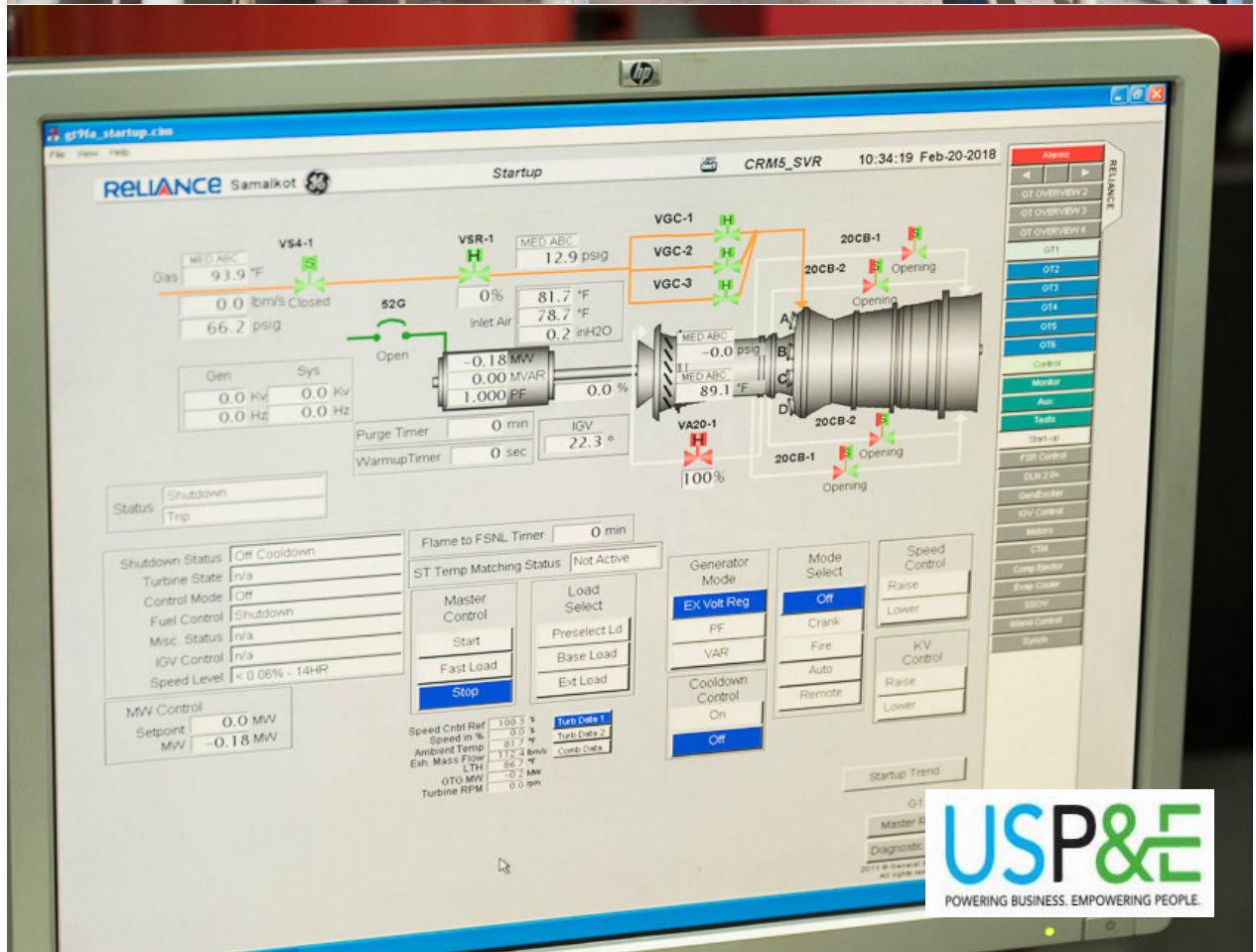








USP&E
POWERING BUSINESS. EMPOWERING PEOPLE.



USP&E
POWERING BUSINESS. EMPOWERING PEOPLE.







