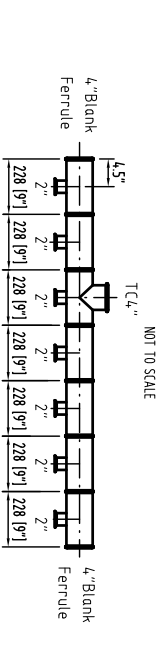
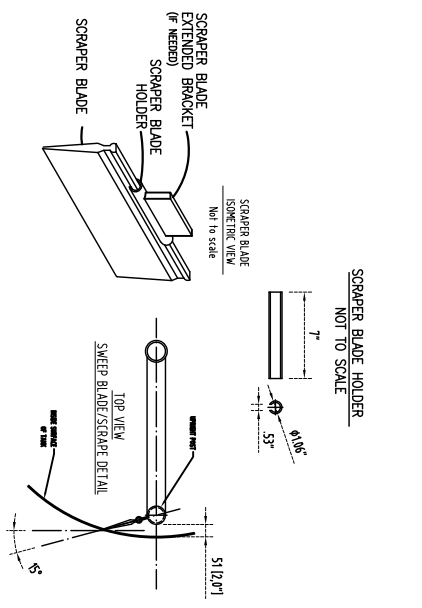
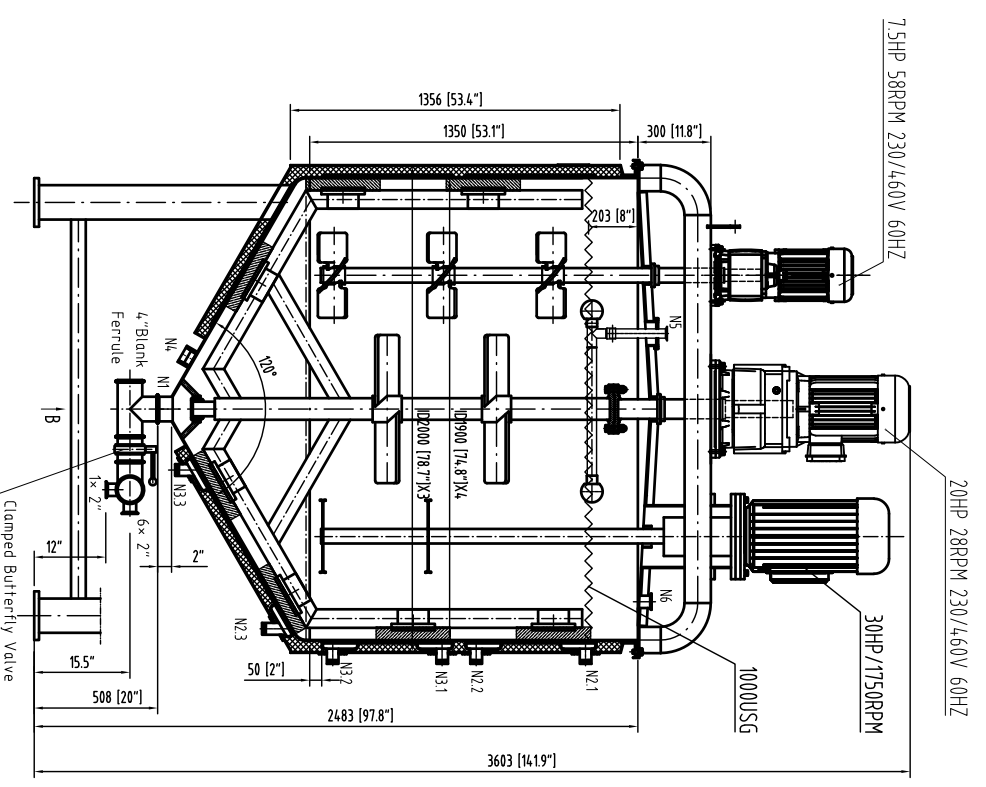
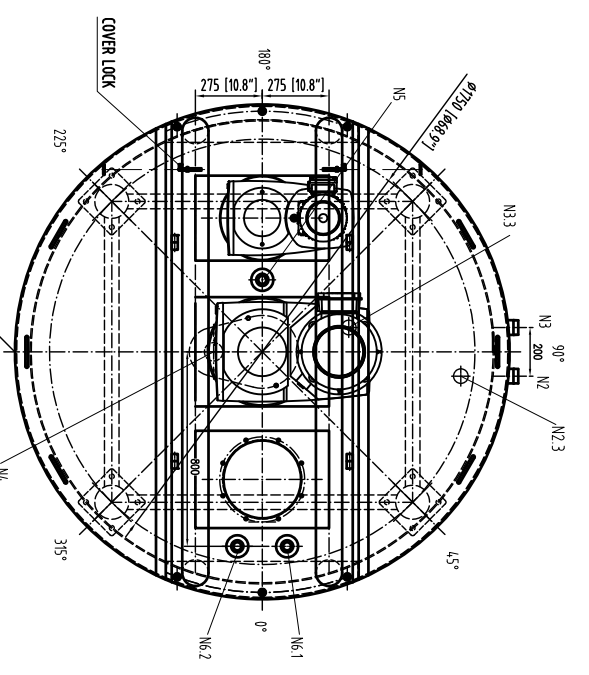


MATERIAL SCHEDULE

| ITEM | QTY. | SIZE/THICK | MATERIAL | DESCRIPTION |
|------|------|------------|----------|---------------|
| 1 | 4 | Ø159x6 | S S 304 | LEG |
| 2 | 2 | 2mm | S S 316L | COVER TOP |
| 3 | 1 | 4mm | S S 316L | SHELL |
| 4 | 1 | 4mm | S S 316L | BOTTOM CONE |
| 5 | 3 | 2mm | S S 304 | JACKET |
| 6 | 1 | 3mm | S S 304 | OUTSIDE SHELL |

NOZZLE SCHEDULE

| ITEM | QTY. | MATERIAL | SIZE | DESCRIPTION |
|------|------|----------|--------------|----------------------------|
| N1 | 1 | 316L SS | 4" TC | OUTLET |
| N2 | 3 | 304 SS | 1.5" NPT | JACKETED INLET |
| N3 | 3 | 304 SS | 1.5" NPT | JACKETED OUTLET |
| N4 | 1 | 316L SS | 1-1/4" UNIC | THERMOWELL |
| N5 | 1 | 316L SS | 1.5" / 3" TC | CP |
| N6 | 2 | 316L SS | 2" TC | Return / Liquid inlet port |



SANITARY QUICK-CONNECT DISTRIBUTION PIPE
NOT TO SCALE

STANDARD INFORMATION & NOTES

| | |
|--|--|
| DESIGN PRESSURE & TEMP: | VESSEL: ATMOSPHERIC @ AMBIENT |
| JACKET: 3PS@90°F | |
| HYDRO TEST AT AMBIENT: | JACKET: 99PS |
| WORKING TEMPERATURE: | JACKET: 300°F |
| SHIP TOLERANCE: ±10% | |
| APPROX. EMPTY WEIGHT: ≈ | |
| FINISH: | INTERIOR: 316L S.S. SURFACES - #4 SANITARY FINISH ISA STANDARD-80 RANGE 23-321 WELDS - GROUND SMOOTH & FLUSH TO #4 SANITARY FINISH ISA STANDARD-80 RANGE 23-321 EXTERIOR: 304 S.S. SURFACES - #4 SANITARY FINISH WELDS: STRIPE BUFFED W/ DISCRINATION REMOVED |
| ASME CERTIFIED YES, WITH U DESIGNATOR, FOR JACKET ONLY | |
| PASSIVATION REQD.: NA | |

SHAANXI HONGDA INDUSTRY CO. LTD

| | | | |
|-------------|----------------------|----------------|---------------|
| PREPARED BY | 1000USG | DRAWING NO. | ZS-11T7-02-HA |
| DRAWN BY | Jacketed Mixing Tank | PRODUCT NUMBER | ZS-11T7-02-HA |
| APPROVED BY | SCALE 1:2 | WEIGHT | TOTAL: 1 |
| | | | PAGE: 1 |

| | | | |
|------|---|-------|---|
| REV | 2 | TOTAL | 1 |
| PAGE | 1 | | |