

MATERIAL SCHEDULE

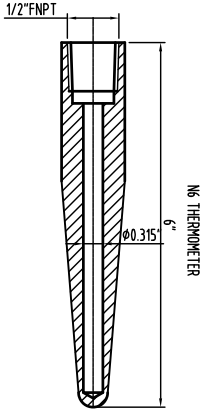
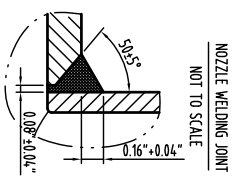
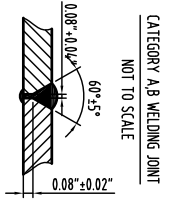
| ITEM | QTY. | SIZE/THICK | MATERIAL | DESCRIPTION |
|------|------|------------|----------|---------------|
| 1 | 1 | 4mm | S.S 316L | DISH TOP |
| 2 | 1 | 4mm | S.S 316L | SHELL |
| 3 | 1 | 4mm | S.S 316L | BOTTOM CONE |
| 4 | 1 | 3mm | S.S 304 | OUTSIDE SHELL |
| 5 | 4 | φ168x6mm | S.S 304 | LEGS |

NOZZLE SCHEDULE

| ITEM | QTY. | MATERIAL | SIZE | DESCRIPTION |
|------|------|----------|---------|-------------|
| N1 | 1 | 316L S.S | 1.5\"/> | |
| N2 | 2 | 316L S.S | 2\"/> | |
| N3 | 2 | 316L S.S | 3\"/> | |
| N4 | 1 | 316L S.S | 24\"/> | |
| N5 | 1 | 316L S.S | 3\"/> | |
| N6 | 1 | 316L S.S | 1/2\"/> | |

STANDARD INFORMATION & NOTES

| | |
|--------------------------|--|
| DESIGN PRESSURE & TEMP.: | VESSEL ATM |
| HYDRO TEST AT AMBIENT: | JACKET MA |
| WORKING TEMPERATURE: | JACKET MA |
| SHIP TOLERANCE: ±1/8" | |
| APPROX. EMPTY WEIGHT: ≈ | |
| FINISH: | INTERIOR: 316L S.S. SURFACES - H4 SANITARY FINISH ISA STANDARD-RA RANGE 23-321 WELDS - GROUND SMOOTH & FLUSH TO H4 SANITARY FINISH (ISA STANDARD-RA RANGE 23-321) EXTERIOR: 304 S.S. SURFACES - H4 SANITARY FINISH WELDS: STRIPE BUFFED W/ DISCRIMINATION REMOVED |
| ASME CERTIFIED MA | |
| PASSIVATION REQ'D: MA | |
| DRIVE: | |



| | | | |
|-------------|-------------|-----------------|---------------|
| PREPARED BY | 2500USG | DRAWING NO. | |
| DRAWN BY | MIXING TANK | PROJECT NUMBER | 26-0618-01-HA |
| APPROVED BY | | GENERAL DRAWING | |
| SCALE | 1:2 | WEIGHT | |
| REV | 0 | TOTAL | 1 |
| | | PAGE | 1 |



1 2 3 4 5 6 7 8 9 10 11 12

H B C D E F G H