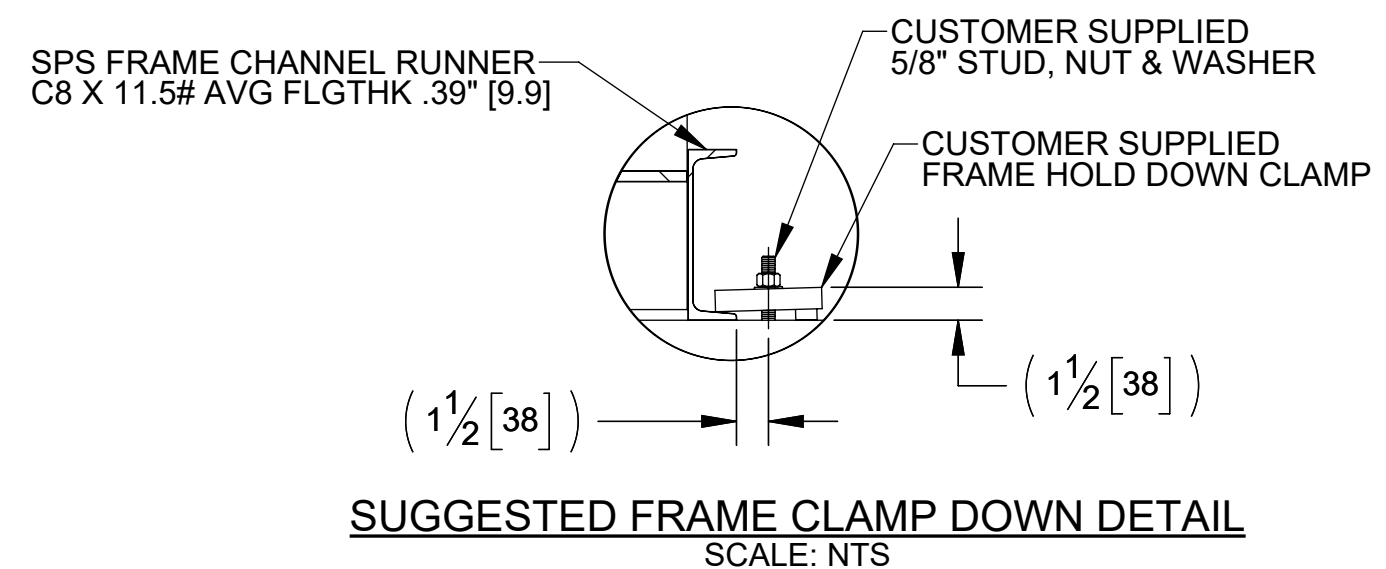
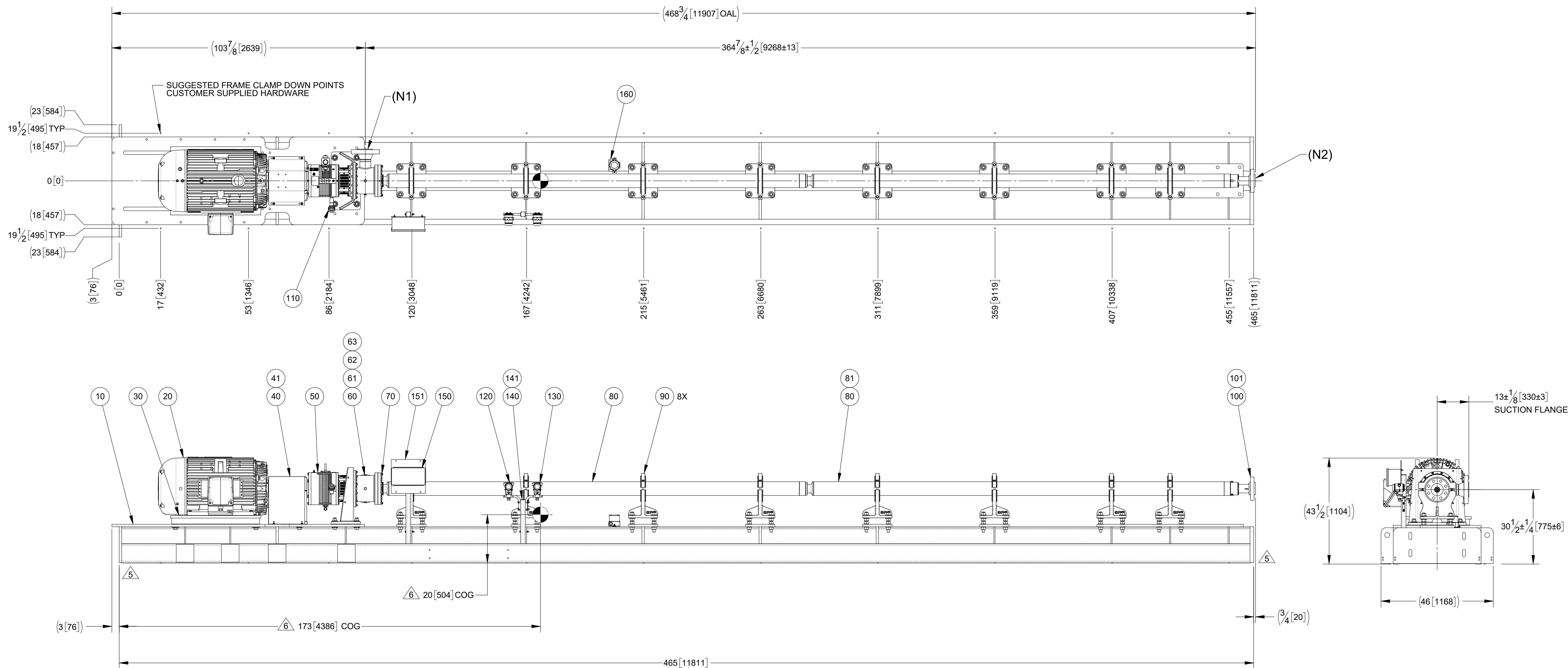


NOTES:

1. SYSTEM WEIGHT: 13000 LBS.
2. SURFACE PUMPING SYSTEM (SPS) MUST BE ASSEMBLED ACCORDING TO WORK INSTRUCTION M5009.
3. SPS MUST HAVE SURFACES PREPARED & PAINTED PER ES-00047, SYSTEM 1, COLOR CODE 10. FOR SURFACE PREPARATION AND PAINTING OF PUMPS, SEE SPS PRODUCT ENGINEER.
4. REFERENCE SEPARATE BILL OF MATERIAL FOR BUBBLE PART NUMBERS & DESCRIPTIONS.
5. GROUNDING SCREW HOLES ARE LOCATED IN THE FRAME ENDPLATES ON BOTH ENDS, BOTH SIDES.
6. CENTER OF GRAVITY (COG) DIMENSIONS ARE ESTIMATED, BASED ON CALCULATED WEIGHTS, & SHOULD BE VERIFIED IN AS-BUILT CONDITION.
7. IT IS RECOMMENDED THAT END USER CONSULT API 686, SPS USER MANUAL AND/OR CIVIL ENGINEER FOR PROPER FOUNDATION DESIGN.
8. AS-BUILT SUCTION ORIENTATION MAY NOT BE REFLECTED.
9. SUCTION FLEX JOINT AND DISCHARGE DROP OUT SPOOL ARE RECOMMENDED FOR INSTALLATION AND MAINTENANCE EASE.



TAG CHART	
UNIT	TAG
1	P-5200A
2	P-5200B



CUSTOMER CONNECTION SCHEDULE*		
SERVICE	DESCRIPTION	MAWP (@ 200 °F / 93 °C)
SUCTION (N1)	4" CL 900 RF WN	1860 PSI
DISCHARGE (N2)	3" CL 900 RF LJ	2035 PSI

* REFERENCE SPS NOZZLE LOAD MATRIX FOR ALLOWABLE NOZZLE LOADS.
* SEE BOM FOR MATERIALS.

MATERIAL	HEAT TREATMENT	COATING	WELDING	REFERENCE	TITLE
A	CN300973	R.LUTT	10/11/2019		ARTIFICIAL LIFT
REV	CHANGE NO	APPROVED	DATE		

MATERIAL NO.		DRAWN		CHECKED		APPROVED		SHEET	
P.OBR	09/19/2019	W.SPAP	10/11/2019	R.LUTT	10/11/2019	1	of	1	D

REFERENCE		TITLE	
SPS 38 BSE+5500 100STG 447TS FM1K		SIZE	DRAWING NUMBER
			500002070H