

Isometric drawing of a chemical processing skid. The skid is mounted on a steel frame and includes the following components:

- ST-2010**: A vertical cylindrical vessel on the left side.
- 24" STACK (SHIP LOOSE)**: A vertical pipe extending from the top of ST-2010.
- 2"-600# PIPE HEADER**: A horizontal pipe connecting the left side of the skid to the main processing area.
- 6"-600# PIPE HEADER**: A horizontal pipe at the bottom left of the skid.
- HTR-1010**: A horizontal cylindrical vessel in the center of the skid.
- PV-1010**: A vertical cylindrical vessel on the right side.
- 30" OD. SEPARATOR (SHIP LOOSE)**: A large spherical separator vessel on the right side.
- SAND SEPARATOR (SHIP LOOSE)**: A smaller spherical separator vessel on the right side.
- (SHIP LOOSE)**: Labels indicating components that are not shipped with the skid.

The drawing includes a North arrow pointing towards the top left. Callouts A through J are used to identify specific components and connections.

GENERAL NOTES:

1. SKID MEMBER
2. APPROX. EM
3. APPROX. WE

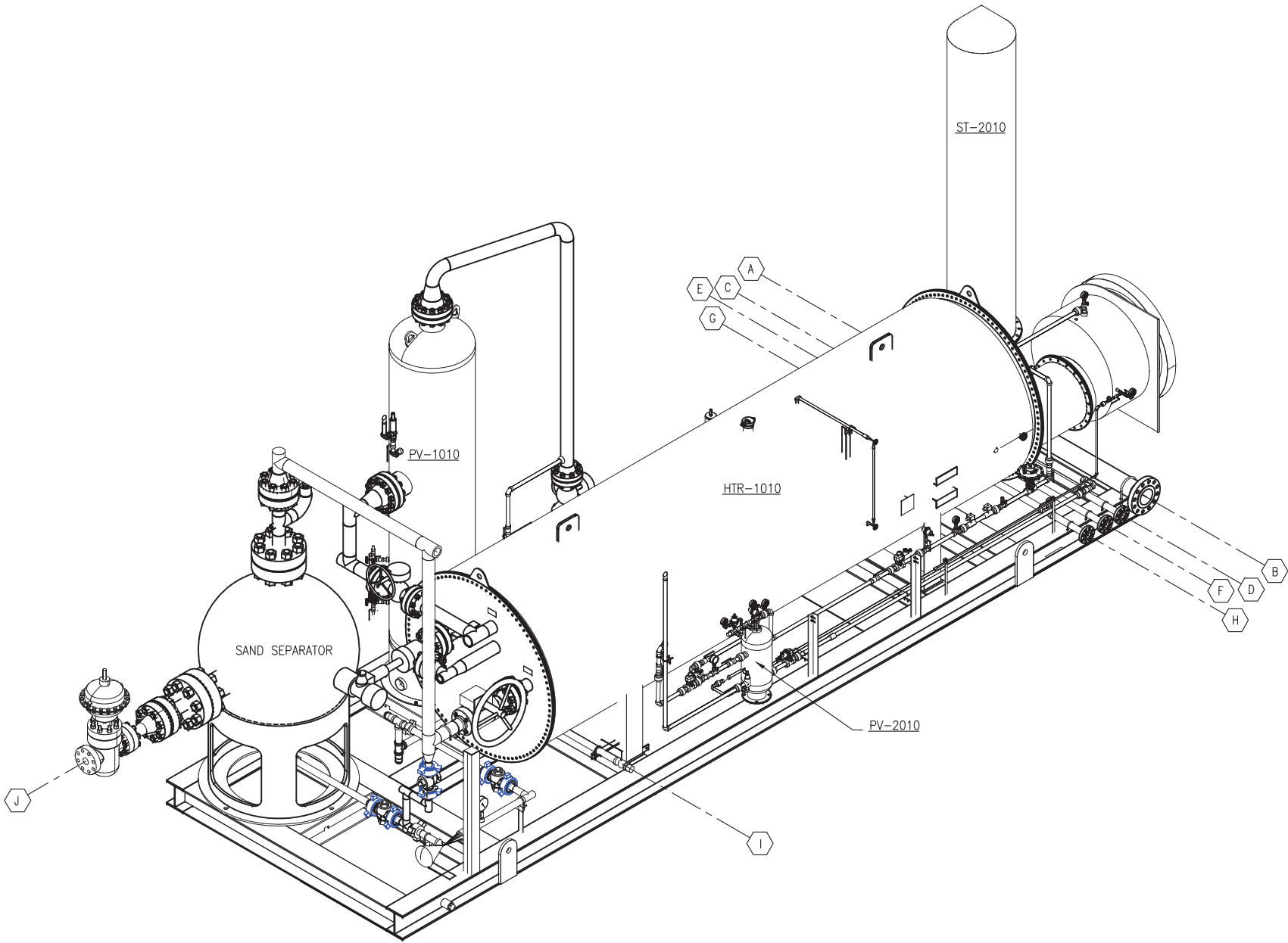
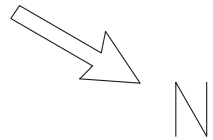
PAINT NOTES:

SW CHEM 400 ENA
COLOR: CARLSBAD

APPROXIMATE SHIPPING DIM

LENGTH	WIDTH
30'-5"	10'-11"

						RICE ENERGY						
						DESIGN BY:	VN	CHK. BY:	EN	APPD. BY:	M	
						DATE:	OCTOBER 31, 2017					
						PART NO:	—		JOB No:	GPURIC0004-0000		
						DRAWING NO.					SHEETS	REV
						GPURIC0004-2-01-01				1 OF 6		1
1	02/01/18	VN	EN	MU	RE-LOCATED PIPE SUPPORT & ADDED PV-1010 LSL							
0	01/05/17	VN	MHS	MU	ISSUED FOR FABRICATION							
REV	DATE	RY	CK	APPD	DESCRIPTION							



NE ISOMETRIC VIEW

CONNECTION SCHEDULE

MK	SIZE	RATING & TYPE	SERVICE
A	6"	600# RF FLANGE	GAS OUTLET HEADER
B	6"	600# RF FLANGE	GAS OUTLET HEADER
C	2"	600# RF FLANGE	GAS SUPPLY HEADER
D	2"	600# RF FLANGE	GAS SUPPLY HEADER
E	2"	600# RF FLANGE	LIQUID OUTLET HEADER
F	2"	600# RF FLANGE	LIQUID OUTLET HEADER
G	2"	600# RF FLANGE	DRAIN HEADER
H	2"	600# RF FLANGE	DRAIN HEADER
I	2"	NPT	HEATER DRAIN
J	3"	3 1/8" 5000# API, RTJ	SAND TRAP INLET

REVISED PRINT
DESTROY ALL OTHERS
02/02/18
Matt Underwood

JOB No: GPURIC0004-0000
THROUGH
GPURIC0013-0000



TITLE: GENERAL ARRANGEMENT
SKID MOUNTED
2.5MM BTU/HR SINGLE GPU
RICE ENERGY

DESIGN BY: VN	CHK. BY: EN	APPD. BY: MU
DATE: OCTOBER 31, 2017		
PART No: -	JOB No: GPURIC0004-0000	
DRAWING NO. GPURIC0004-2-01-02	SHEETS 2 OF 6	REV. 1

REV.	DATE	BY	CK	APPD.	DESCRIPTION
1	02/01/18	VN	EN	MU	RE-LOCATED PIPE SUPPORT & ADDED PV-1010 LSL
0	01/05/17	VN	MHS	MU	ISSUED FOR FABRICATION



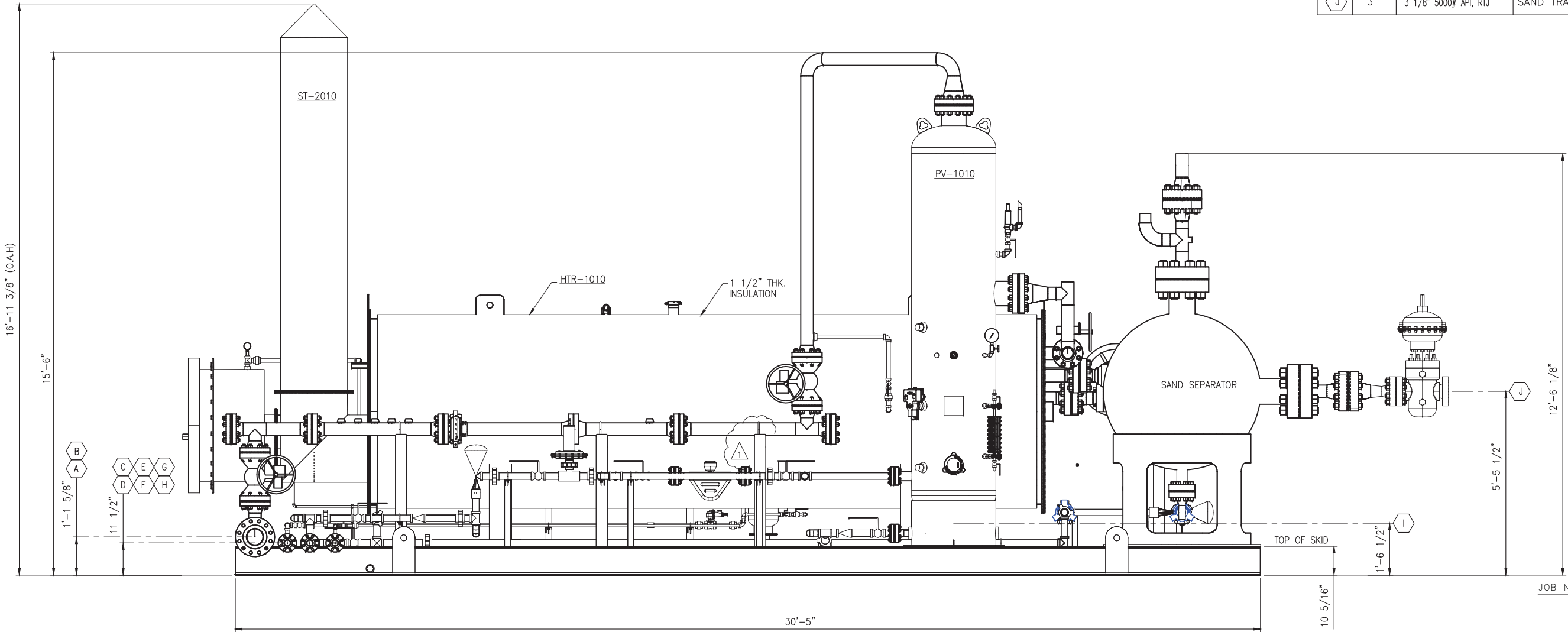
JOB No: GPURIC0004-0000
THROUGH
GPURIC0013-0000

REVISED PRINT
DESTROY ALL OTHERS
02/02/18
Matt Underwood

							2000R D1C/HR SINGLE GFC RICE ENERGY					
							DESIGN BY:	VN	CHK. BY:	EN	APPD. BY:	MU
							DATE: OCTOBER 31, 2017					
							PART No: —		JOB No: GPURIC0004-0000			
							DRAWING NO.				SHEETS	
											REV.	
1	02/01/18	VN	EN	MU	RE-LOCATED PIPE SUPPORT & ADDED PV-1010 LSL							
0	01/05/17	VN	MHS		ISSUED FOR FABRICATION							
REV	DATE	RY	CK	APPD.	DESCRIPTION							
					GPURIC0004-2-01-03				3 OF 6		1	

CONNECTION SCHEDULE


MK	SIZE	RATING & TYPE	SERVICE
A	6"	600# RF FLANGE	GAS OUTLET HEADER
B	6"	600# RF FLANGE	GAS OUTLET HEADER
C	2"	600# RF FLANGE	GAS SUPPLY HEADER
D	2"	600# RF FLANGE	GAS SUPPLY HEADER
E	2"	600# RF FLANGE	LIQUID OUTLET HEADER
F	2"	600# RF FLANGE	LIQUID OUTLET HEADER
G	2"	600# RF FLANGE	DRAIN HEADER
H	2"	600# RF FLANGE	DRAIN HEADER
I	2"	NPT	HEATER DRAIN
J	3"	3 1/8" 5000# API, RTJ	SAND TRAP INLET



ELEVATION VIEW

JOB No: GPURIC0004-0000
THROUGH
GPURIC0013-0000

REVISED PRINT
DESTROY ALL OTHERS
02/02/18
Matt Underwood



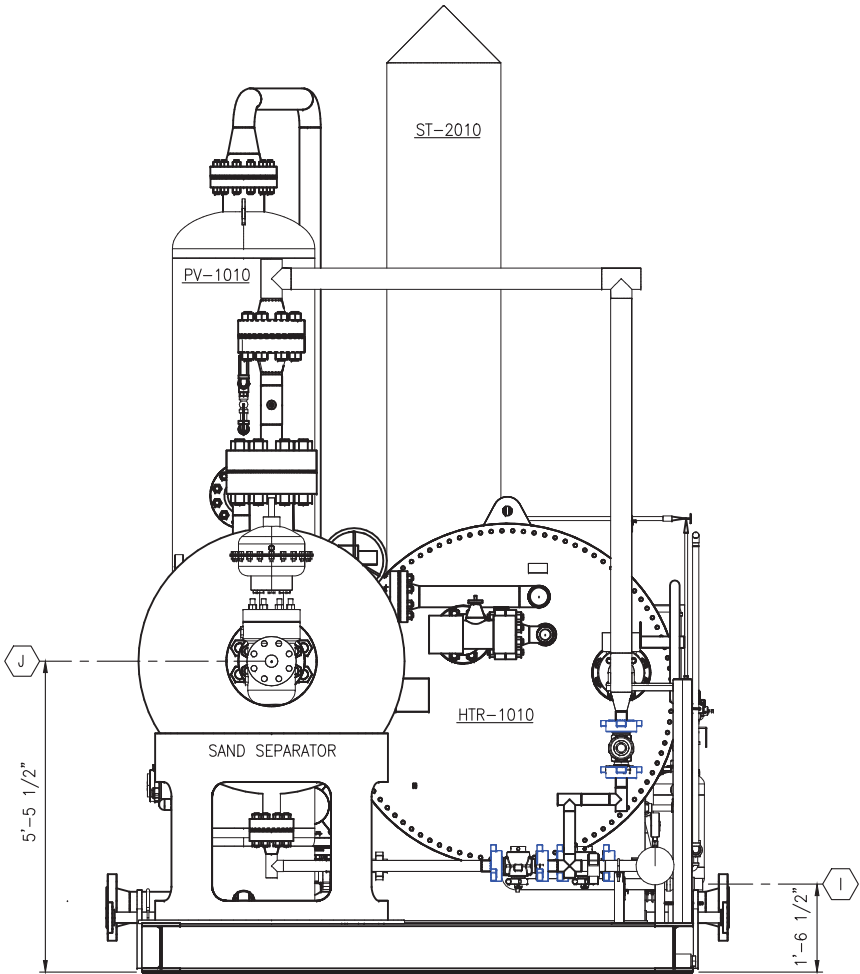
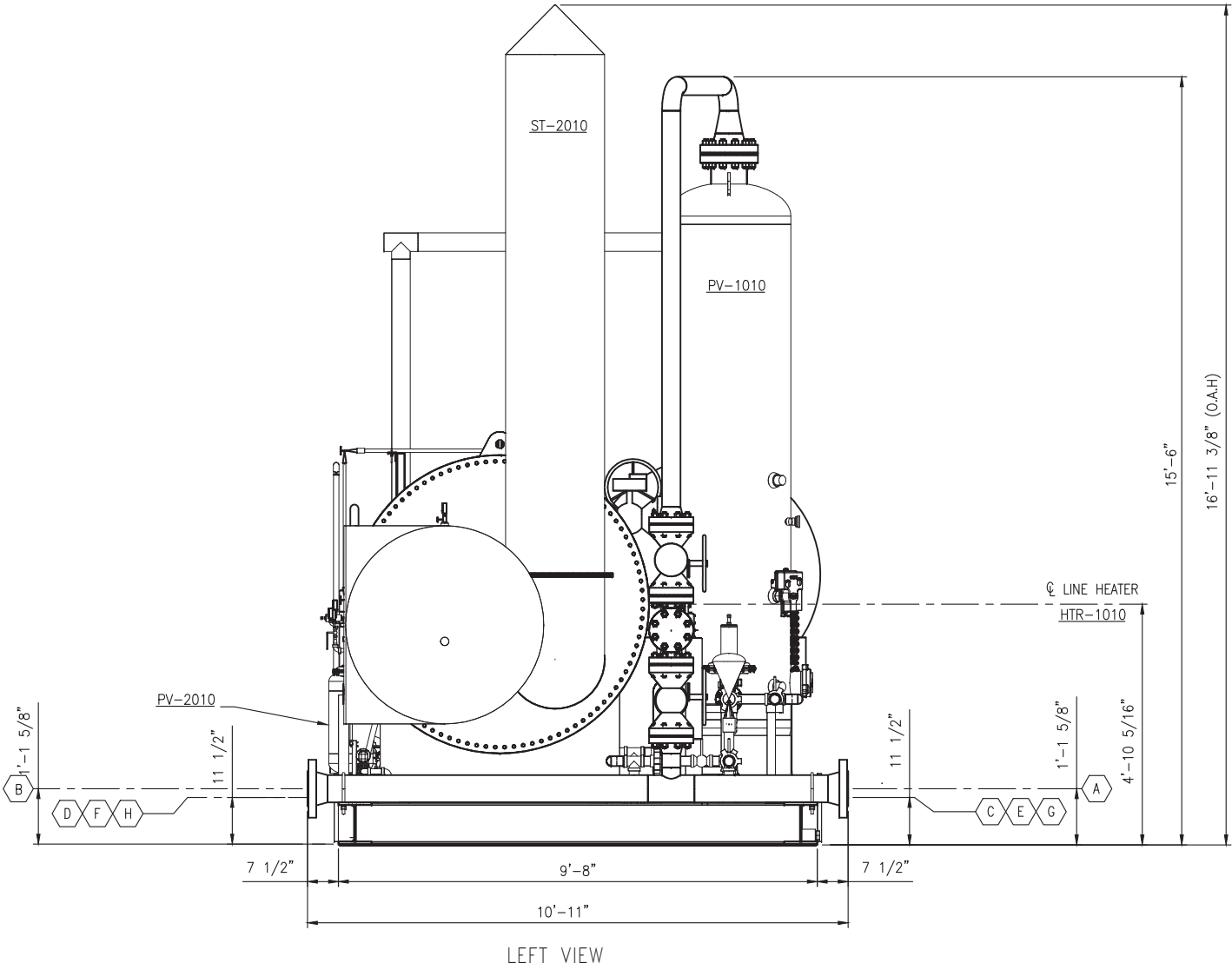
TITLE: GENERAL ARRANGEMENT
SKID MOUNTED
2.5MM BTU/HR SINGLE GPU
RICE ENERGY

DESIGN BY: VN	CHK. BY: EN	APPD. BY: MU
DATE: OCTOBER 31, 2017		
PART No: -	JOB No: GPURIC0004-0000	
DRAWING NO. GPURIC0004-2-01-04	SHEETS 4 OF 6	REV. 1

1	02/01/18	VN	EN	MU	RE-LOCATED PIPE SUPPORT & ADDED PV-1010 LSL
0	01/05/17	VN	MHS	MU	ISSUED FOR FABRICATION
REV.	DATE	BY	CK	APPD.	DESCRIPTION

CONNECTION SCHEDULE

MK	SIZE	RATING & TYPE	SERVICE
A	6"	600# RF FLANGE	GAS OUTLET HEADER
B	6"	600# RF FLANGE	GAS OUTLET HEADER
C	2"	600# RF FLANGE	GAS SUPPLY HEADER
D	2"	600# RF FLANGE	GAS SUPPLY HEADER
E	2"	600# RF FLANGE	LIQUID OUTLET HEADER
F	2"	600# RF FLANGE	LIQUID OUTLET HEADER
G	2"	600# RF FLANGE	DRAIN HEADER
H	2"	600# RF FLANGE	DRAIN HEADER
I	2"	NPT	HEATER DRAIN
J	3"	3 1/8" 5000# API, RTJ	SAND TRAP INLET



RIGHT VIEW

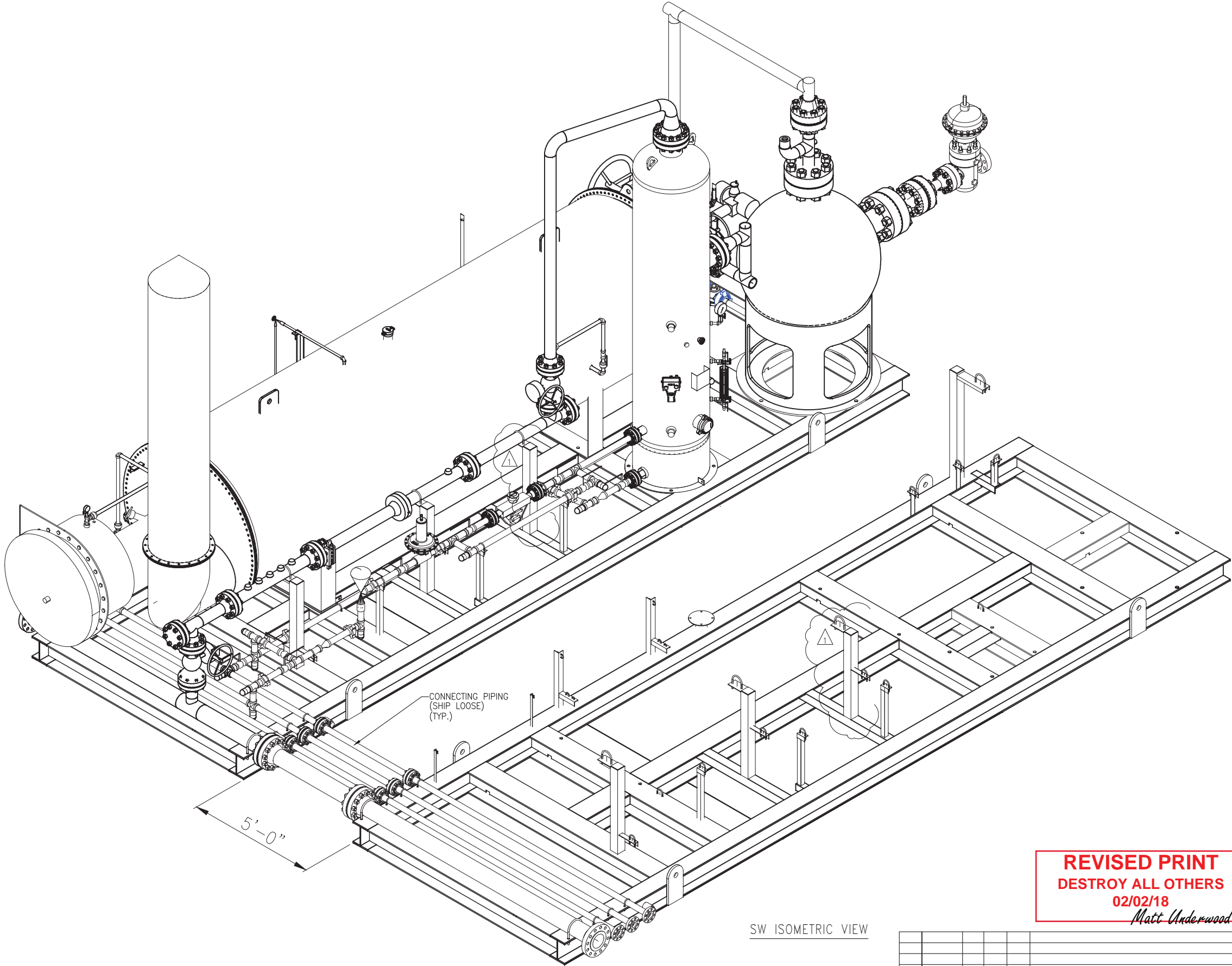
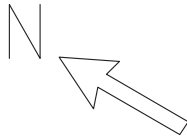
REVISED PRINT
DESTROY ALL OTHERS
02/02/18
Matt Underwood

JOB No: GPURIC0004-0000
THROUGH
GPURIC0013-0000



TITLE: GENERAL ARRANGEMENT SKID MOUNTED 2.5MM BTU/HR SINGLE GPU RICE ENERGY			
DESIGN BY: VN	CHK. BY: EN	APPD. BY: MU	
DATE: OCTOBER 31, 2017			
PART No: -	JOB No: GPURIC0004-0000		
DRAWING NO.	SHEETS	REV.	
GPURIC0004-2-01-05	5 OF 6	1	

REV.	DATE	BY	CK	APPD.	DESCRIPTION
1	02/01/18	VN	EN	MU	RE-LOCATED PIPE SUPPORT & ADDED PV-1010 LSL
0	01/05/17	VN	MHS	MU	ISSUED FOR FABRICATION



SW ISOMETRIC VIEW

REVISED PRINT
DESTROY ALL OTHERS
02/02/18
Matt Underwood

JOB No: GPURIC0004-0000
THROUGH
GPURIC0013-0000



TITLE: GENERAL ARRANGEMENT SKID MOUNTED 2.5MM BTU/HR SINGLE GPU RICE ENERGY			
DESIGN BY: VN	CHK. BY: EN	APPD. BY: MU	
DATE: OCTOBER 31, 2017			
PART No: -	JOB No: GPURIC0004-0000		
DRAWING NO. GPURIC0004-2-01-06	SHEETS 6 OF 6	REV. 1	

1	02/01/18	VN	EN	MU	RE-LOCATED PIPE SUPPORT & ADDED PV-1010 LSL
0	01/05/17	VN	MHS	MU	ISSUED FOR FABRICATION
REV.	DATE	BY	CK	APPD.	DESCRIPTION