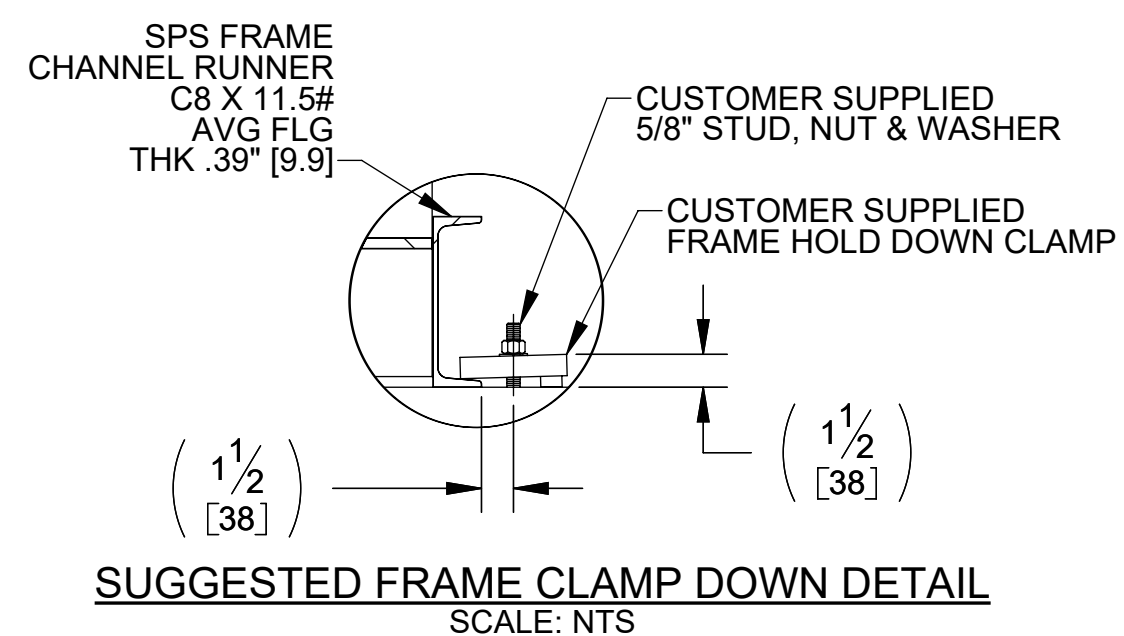
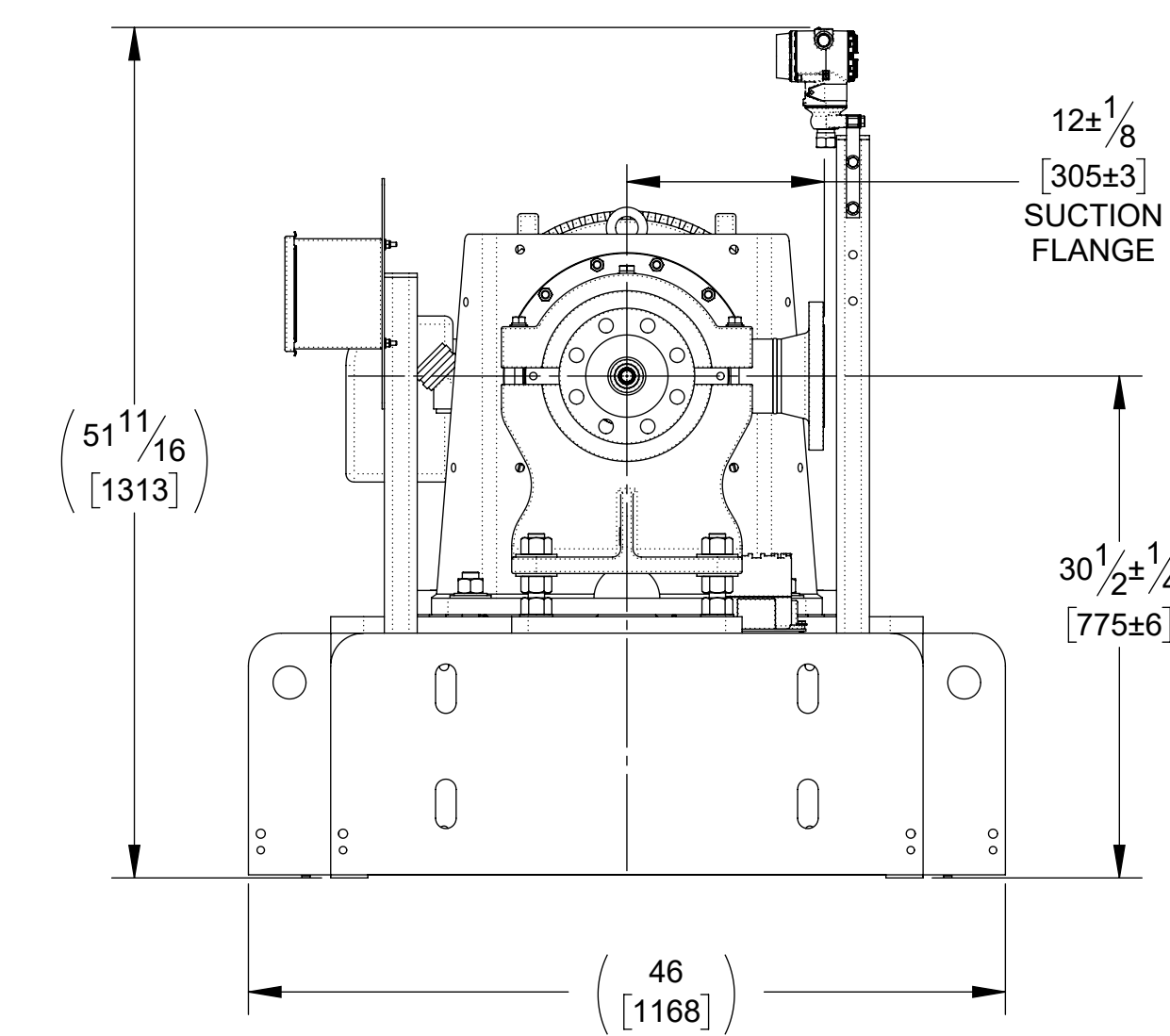
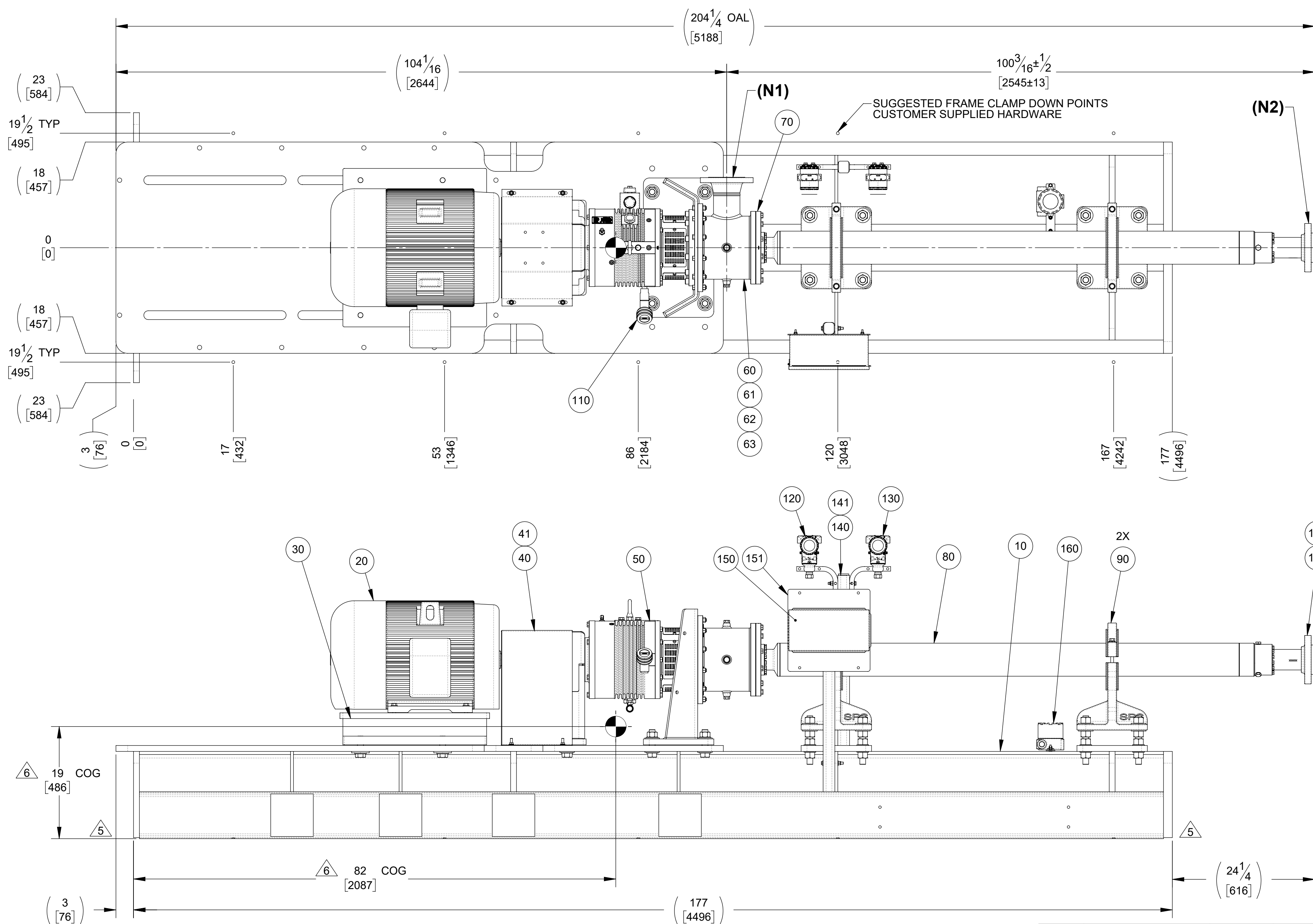


NOTES:

1. SYSTEM WEIGHT: 6,500 LBS.
2. SURFACE PUMPING SYSTEM (SPS) MUST BE ASSEMBLED ACCORDING TO WORK INSTRUCTION M5009.
3. SPS MUST HAVE SURFACES PREPARED & PAINTED PER ES-00047, SYSTEM 1, COLOR CODE 10. FOR SURFACE PREPARATION AND PAINTING OF PUMPS, SEE SPS PRODUCT ENGINEER.
4. REFERENCE SEPARATE BILL OF MATERIAL FOR BUBBLE PART NUMBERS & DESCRIPTIONS.
5. GROUNDING SCREW HOLES ARE LOCATED IN THE FRAME ENDPLATES ON BOTH ENDS, BOTH SIDES.
6. CENTER OF GRAVITY (COG) DIMENSIONS ARE ESTIMATED, BASED ON CALCULATED WEIGHTS, & SHOULD BE VERIFIED IN AS-BUILT CONDITION.
7. IT IS RECOMMENDED THAT END USER CONSULT API 686, SPS USER MANUAL AND/OR CIVIL ENGINEER FOR PROPER FOUNDATION DESIGN.
8. AS-BUILT SUCTION ORIENTATION MAY NOT BE REFLECTED.
9. SUCTION FLEX JOINT AND DISCHARGE DROP OUT SPOOL ARE RECOMMENDED FOR INSTALLATION AND MAINTENANCE EASE.



TAG CHART	
UNIT	TAG
1	P-5040A
2	P-5040B



CUSTOMER CONNECTION SCHEDULE*		
SERVICE	DESCRIPTION	MAWP (@ 200 °F / 93 °C)
SUCTION (N1)	4" CL 150 RF WN	235 PSI
DISCHARGE (N2)	3" CL 300 RF LJ	680 PSI

\* REFERENCE SPS NOZZLE LOAD MATRIX FOR ALLOWABLE NOZZLE LOADS.  
\* SEE BOM FOR MATERIALS.

MATERIAL	HEAT TREATMENT	COATING	WELDING	REFERENCE	TITLE
A	CN300972	R.LUTT	10/02/2019		ARTIFICIAL LIFT
REV	CHANGE NO	APPROVED	DATE		

UNLESS OTHERWISE SPECIFIED:  
PRIMARY DIMENSIONS ARE IN INCHES  
SECONDARY DIMENSIONS ARE IN MM  
REWORK THIS DRAWING PER ASME Y14.100 2013  
REMOVE ALL BURRS  
BREAK SHARP EDGES MAX 16° (1:4)  
MACHINE SURFACE: RA 125 (5 IN)

TOLERANCE NOT SHOWN:  
FRACTIONAL ± 1/32 (3:8)  
DECIMAL ± .03 (3:8)  
XXX ± .01 (3:8)  
XXX ± .05 (3:16)  
ANGULAR ± 1°  
CONCENTRICITY .010 (3:16)

INSPECTION DIMENSIONS:  
☉ SYMBOL REPRESENTS THE REQUIRED INSPECTION OF BOTH SIZE LOCATION DIMENSIONS AND ASSOCIATED TOLERANCES INCLUDING GD&T.

**BAKER HUGHES**  
a GE company

COPYRIGHT 2019 BAKER HUGHES, A GE COMPANY ("BHE") (UNPUBLISHED WORK). ALL RIGHTS RESERVED. THIS DOCUMENT IS THE PROPERTY OF BHE. BY ACCEPTING OR ACCESSING THIS DOCUMENT THE RECIPIENT AGREES TO BHE AND IS SUBJECT TO RETURN ON DEMAND. THIS DOCUMENT MAY NOT BE COPIED, REPRODUCED, USED AS A BASIS FOR A DERIVATIVE WORK, OR DISCLOSED IN ANY FORM, IN WHOLE OR IN PART, WITHOUT EXPRESS WRITTEN CONSENT OF BHE. FURTHER IT MAY NOT BE USED, DIRECTLY OR INDIRECTLY IN ANY WAY DETRIMENTAL TO BHE'S INTEREST AND DOES NOT COMPREHEND A PART OF ANY CUSTOMER WORK, PROJECT OR SERVICE.

MATERIAL NO.	TITLE
	SPS 14 2SE+4200 23STG 364TS FM1K
DRAWN	T.MIDD 09/30/2019
CHECKED	W.SPAP 10/02/2019
APPROVED	R.LUTT 10/02/2019
SHEET	1 of 1