



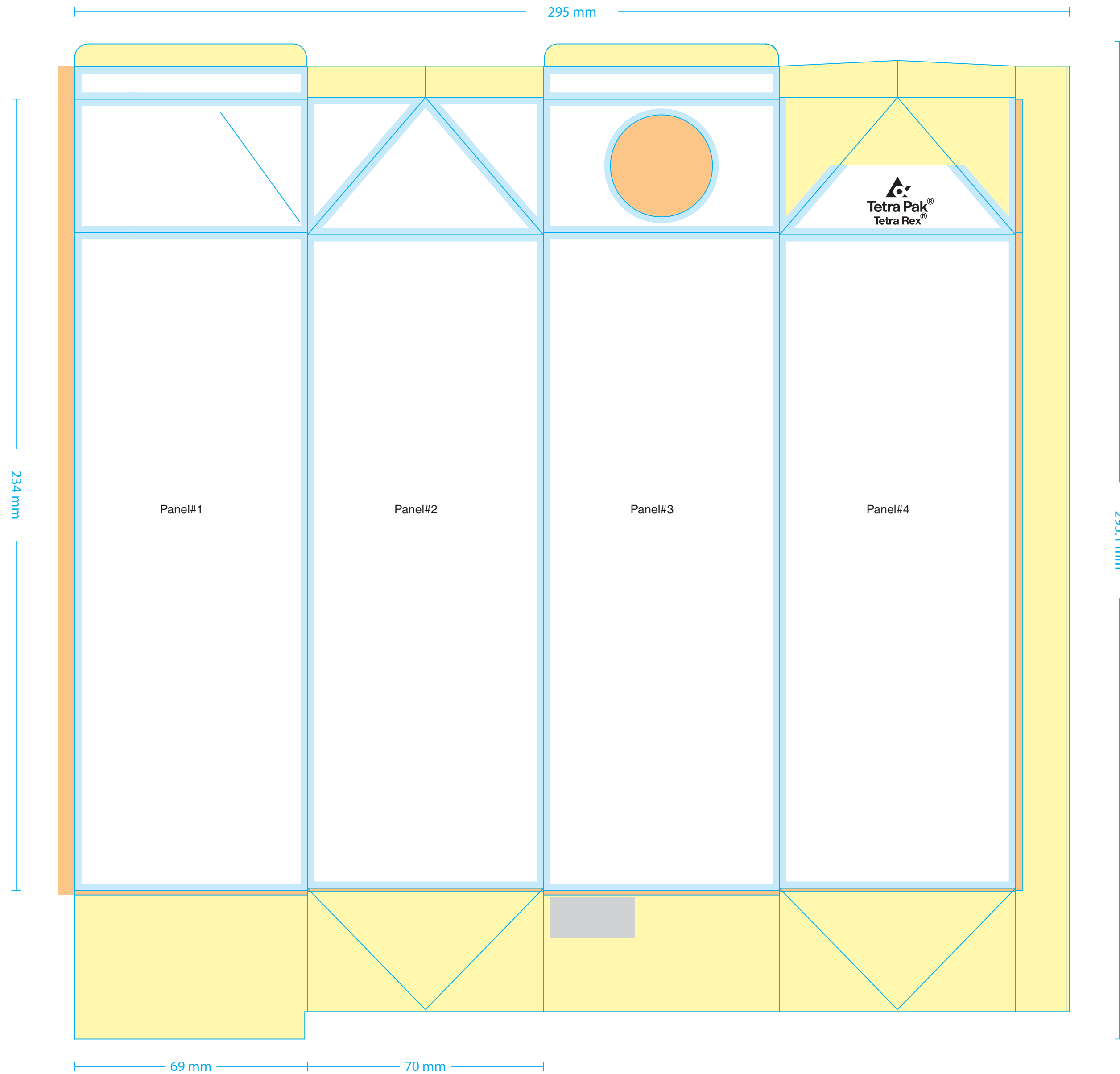
Tetra Rex® 1000 Base H30

Keyline no: 8008

Version: 1

Keyline Colour coding

- Area for customer logos and legal text
- Print free area
- Not visible area after folding
- Safety distance from creasing lines



**About this Keyline file**

This new Keyline has been created to support you in the development of your package design. There are several differences which are important in helping improve the process from creation through to commercialisation.

We ask that you utilise the new layer structure by adding your design artwork into the Job layers and all sub-elements in the respective sub-layers for text, logos, images, background.

We strongly advise you to ensure the specified locked layers remain locked to prevent unwanted moving of creasing lines.

**Please note:**

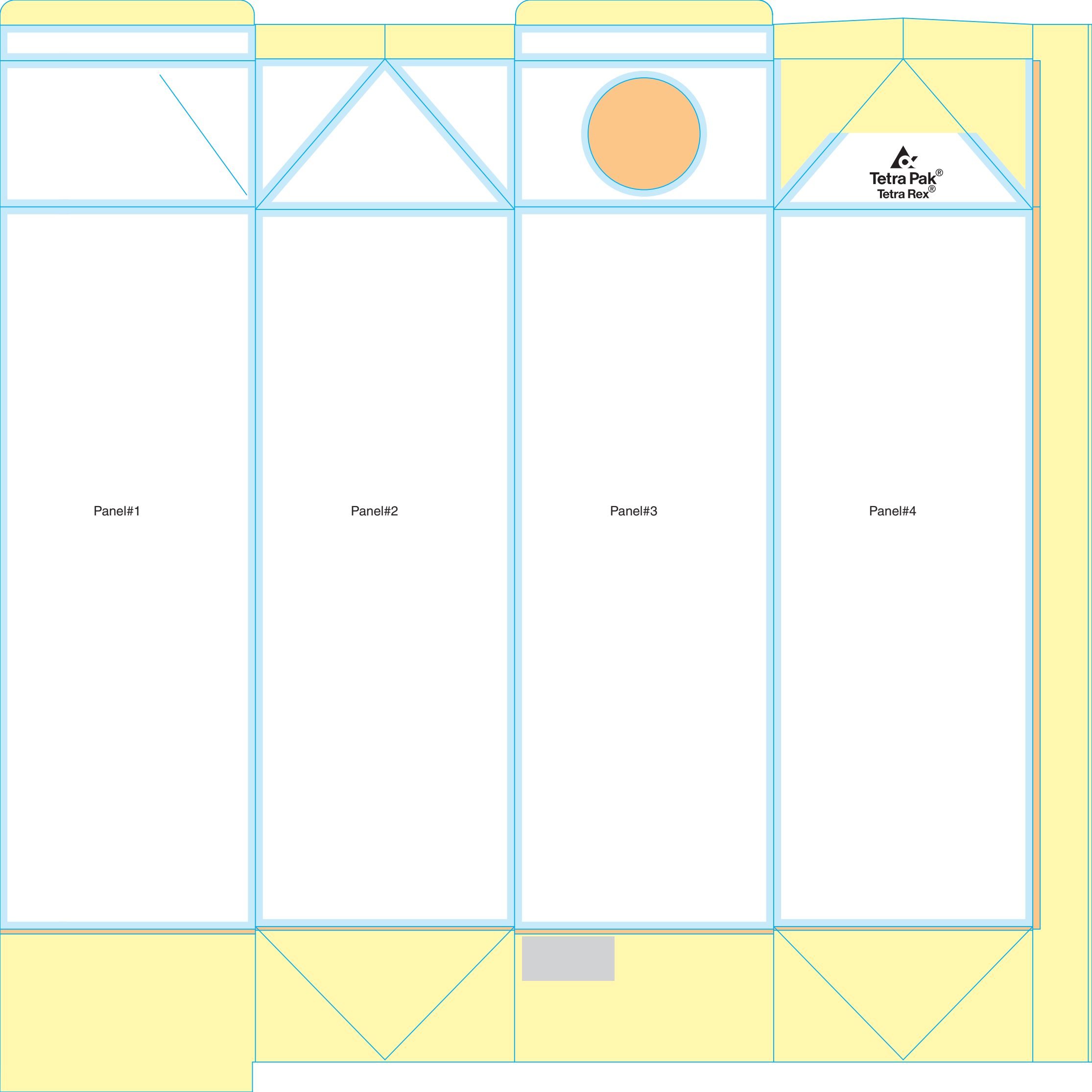
The design is not masked to the borders and your images and background can extend outside of the design area. Tetra Pak will add masks during the process of converting your artwork into a Tetra Pak ready production file.

For further information on how to save the your keyline for optimal conversion from artwork to production can be found the Tetra Pak Design Manual available from your local representative.

**Additional Information:**

Tetra Pak is able to provide a broad range of knowledge and information to support you in the process of designing for Tetra Pak packages to meet the needs of different Consumers and product Categories.

From trend analysis to design briefings, Tetra Pak Marketing Services can support you in developing new products, packages and brand designs giving you access to experience and expertise from Tetra Pak design professionals.



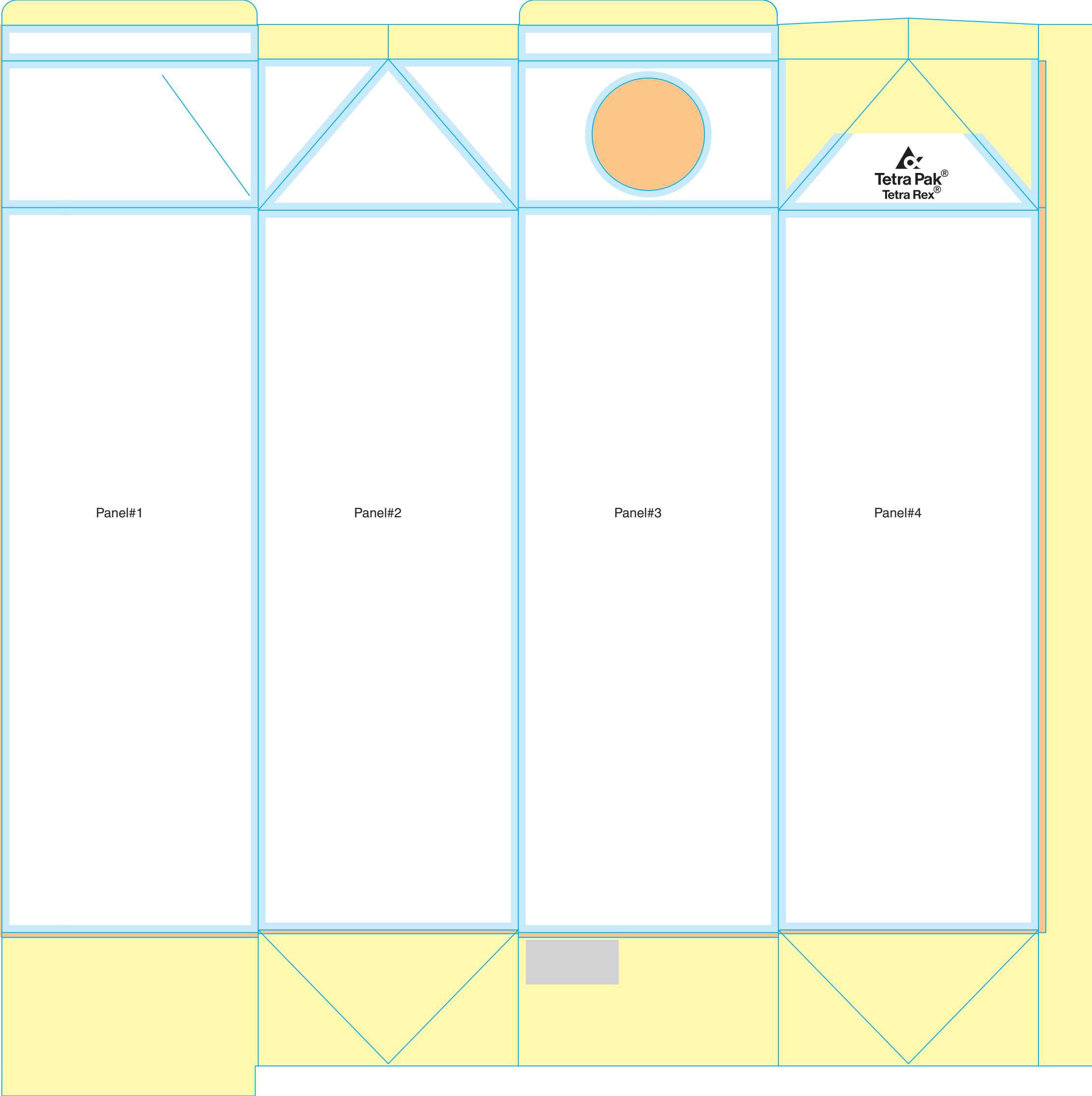
Panel#1

Panel#2

Panel#3

Panel#4

  
**Tetra Pak®**  
Tetra Rex®



Panel#1

Panel#2

Panel#3

Panel#4

  
**Tetra Pak**<sup>®</sup>  
Tetra Rex<sup>®</sup>