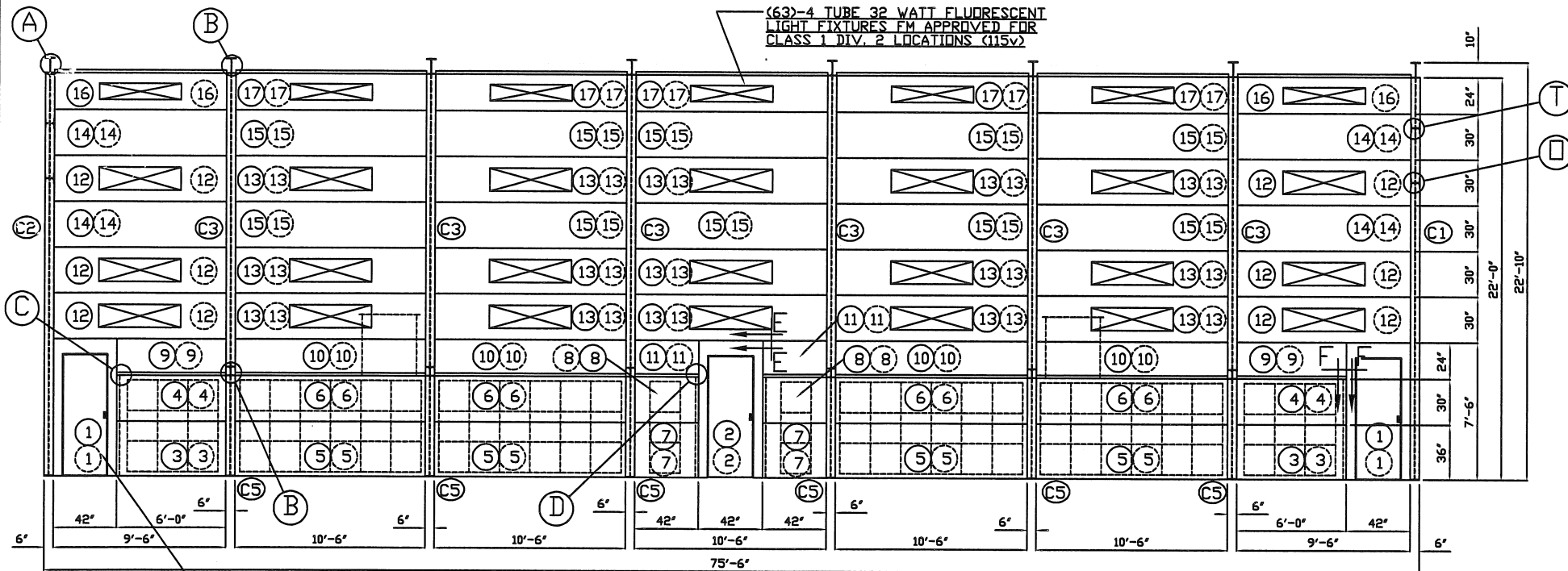


PLAN VIEW



SIDE ELEVATION

GENERAL NOTES:

1. BOOTH FABRICATED OF 18 GAUGE GALVANIZED STEEL PANELS.
2. PANELS FORMED WITH EXTERIOR FLANGES AND PRE-PUNCHED HOLES ON 6" CENTERS.
3. ASSEMBLE BOOTH WITH 5/16" PAN HEAD MACHINE BOLTS AND NUTS PROVIDED.
4. SECURE FLOOR CHANNEL WITH 1/4" DRIVE NAILS.
5. T-BAR, CORNER ANGLE AND FLOOR CHANNEL SIZED TO FIT AT FACTORY.

ITEM	QTY.	DESCRIPTION
55	8100	5/16" X 3/4" TRUSS HEAD BOLTS
56	8100	5/16" HEAVY HEX NUTS
57	130	1/4" X 1 1/4" DRIVE ANCHORS
58	64	3/8" X 3 3/4" WEDGE ANCHORS
59	1	ELECTRICAL CONTROL PANEL
60	4	36" DAMPER TOP
61	4	CURB COVER
62	4	36" SPIRAL STACK X 24'-0"
63	200	3/8-16 X 1" HEXHEAD BOLTS
64	200	3/8-16 HEX NUTS
65	200	3/8" LOCK WASHERS
66	200	3/4" X 2" HEXHEAD BOLTS
67	200	3/4" HEX NUTS
68	200	3/4" LOCK WASHERS

APPROVAL OF DRAWINGS

Signed drawing(s) is a statement that the dimensions, design and application have been reviewed and are approved for fabrication.

- Approved as submitted
- Approved as noted
- Disapproved - Please resubmit

NOTE: MANUFACTURE OF EQUIPMENT WILL BE SCHEDULED AFTER RECEIPT OF APPROVED DRAWINGS.

CUSTOMER MUST FURNISH THE FOLLOWING INFORMATION:

Gas Pressure _____ Propane Natural
 Voltage _____ Phase _____

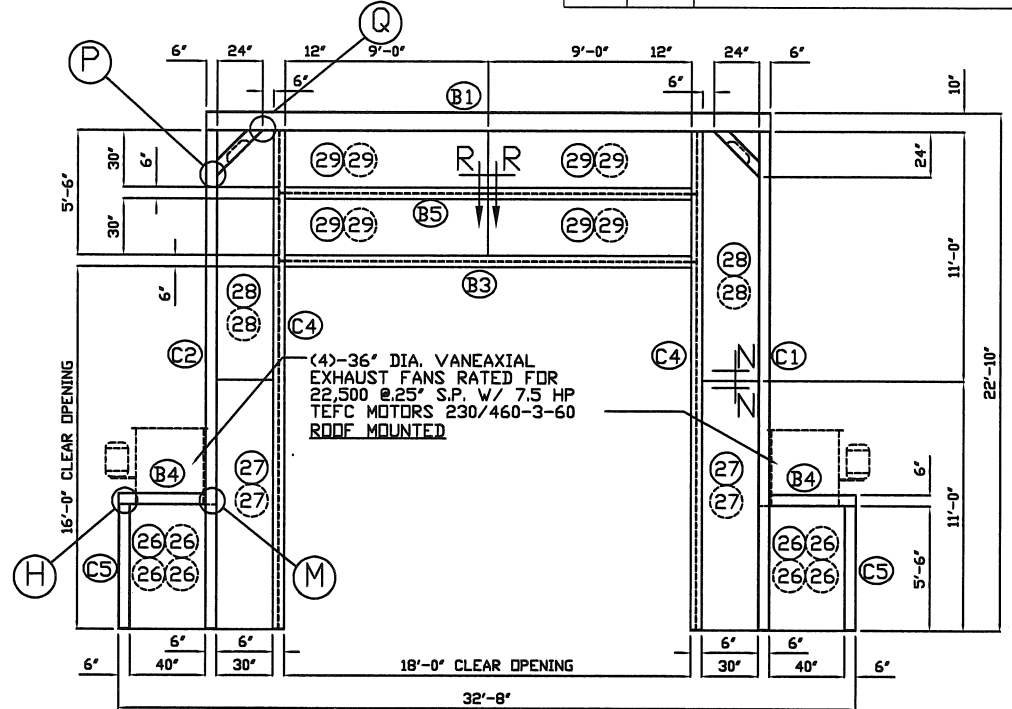
Roof Pitch (if ordering duct) _____

NOTE: PSI WILL NOT BE RESPONSIBLE FOR BACK CHARGES RELATED TO THE ABOVE ITEMS WHEN PROVIDED WITH INCORRECT INFORMATION.

AUTHORIZED SIGNATURE: _____

BILL OF MATERIALS

ITEM	QTY.	DESCRIPTION
1	4	DOOR PANEL 42" X 7'-6" W/1-RAW EDGE
2	2	DOOR PANEL 42" X 7'-6"
3	4	SIDE PANEL 36" X 6'-0"
4	4	SIDE PANEL 30" X 6'-0"
5	8	SIDE PANEL 36" X 10'-6"
6	8	SIDE PANEL 30" X 10'-6"
7	4	SIDE PANEL 36" X 42"
8	4	SIDE PANEL 30" X 42"
9	4	SIDE PANEL 24" X 6'-0"
10	8	SIDE PANEL 24" X 10'-6"
11	4	SIDE PANEL 24" X 42"
12	12	SIDE PANEL 30" X 9'-6" W/LIGHT FRAME
13	30	SIDE PANEL 30" X 10'-6" W/ LIGHT FR.
14	8	SIDE PANEL 30" X 9'-6"
15	20	SIDE PANEL 30" X 10'-6"
16	4	HIP PANEL 34" X 9'-6" X 45" W/LIGHT
17	10	HIP PANEL 34" X 10'-6" X 45" W/LIGHT
18	4	TOP PANEL 48" X 6'-0" (FLAT)
19	4	TOP PANEL 48" X 10'-6" W/FAN RING (FLAT)
20	4	TOP PANEL 48" X 10'-6" (FLAT)
21	4	TOP PANEL 48" X 42" (FLAT)
22	4	TOP PANEL 36" X 9'-6"
23	10	TOP PANEL 36" X 10'-6"
24	2	TOP PANEL 36" X 9'-6" W/LIGHT FRAME
25	5	TOP PANEL 36" X 10'-6" W/LIGHT FRAME
26	8	END PANEL 48" X 5'-6" W/1-RAW EDGE
27	4	END PANEL 30" X 11'-0" (FLAT)
28	4	END PANEL 30" X 11'-0" (FLAT) W/ MITER 1-END
29	8	END PANEL 30" X 9'-0" (FLAT)
30		
31	14	SUPPLY FILTER FRAME D07-138-02
32	16	EXHAUST FILTER FRAME D07-138-02
33	1	LOT SUPPORT STEEL D07-138-02
34	8	2x2 ANGLE X 48"
35	6	2x2 ANGLE X 42"
36	8	2x2 ANGLE X 7'-6"
37	4	2x2 ANGLE X 6'-0"
38	24	2x2 ANGLE X 10'-6"
39	4	2x2 ANGLE X 42"
40	8	2x2 ANGLE X 9'-6"
41	8	T-BAR X 30"
42		
43	8	FLOOR CHANNEL X 40"
44	4	FLOOR CHANNEL X 42"
45	4	36" DIA. VANE AXIAL EXHAUST FAN
46	4	7.5 HP TEFC MOTOR
48	1	LOT BELTS & PULLEYS
49	4	AIR FLOW SWITCH
50	63	FLUORESCENT LIGHT FIXTURE 390441
51	4	MANOMETER
52	240	R1/00 SUPPLY FILTER 20x20
53	384	3032 EXHAUST FILTER 20x20
54	384	1012 GRID 20x20



END ELEVATION

7-16-08	CORRECTED #15 LENGTH	JWCURLEE
6-17-08	REVISED END ELEVATION	HUDSON
4-30-08	ADD BOLTS & NUTS	HUDSON
8-27-07	NUMBER SUPPORT STEEL	HUDSON
7-19-07	REVISED TOP PANELS	HUDSON
7-11-07	REVISED TOP BEAMS	HUDSON
4-11-07	REVISED DOOR HEIGHT	HUDSON
4-10-07	REVISED WIDTH	HUDSON

P.O. BOX 5373
 1500 TRINITY AVE.
 HIGH POINT, N.C. 27262
 (336) 886-7161

METSO MINERALS
 10145 TWO NOTCH RD.
 COLUMBIA, SC 29229

WASH/SPRAY BOOTH
 drawn by J.W., HUDSON scale 1/4"=1'-0" date 2-28-07
 date 07-138 check by date 07-138 date 07-138-01