

CUSTOMER NOTE: REGARDING ALL FLANGED NOZZLES THAT ARE FLUSH W/ TANK I.D.,
THE INTERNAL DIA. WILL BE REDUCED FROM MOLD SIZE, DUE TO THE LAYUP NECESSARY FOR PROPER INSTALLATION.
PLEASE CONSIDER THIS WHEN DETERMINING NOZZLE SIZES REQUIRED FOR CONNECTIONS THAT HAVE INT. PROBES, ETC.

NOZZLE SCHEDULE							
MARK	QTY.	SIZE	PROJ.	SERVICE	REMARKS :	REINF. THK.	DIAMETER FULL OVERL. w/ TAPE
A	1	4"	5"	LEVEL SENSOR		3/8"	10" 13"
B	1	6"	6"	DRAIN		5/8"	12" 17"
C	1	6"	6"	SUMP OUTLET		5/8"	12" 17"
D	1	6"	6"	INLET		3/8"	12" 15"
E	1	6"	6"			3/8"	12" 15"
F	1	6"	SEE DETAIL	V-VENT		3/8"	12" 15"
G	1	24"	6"	TOP MANWAY	w/ DOME COVER	3/8"	32" 35"
H	1	24"	6"	SIDE MANWAY	w/ DOME COVER	9/16"	48" 52 1/2"

MATERIAL SHOWN FOR ONE (1) TANK ONE (1) TANK REQ'D			BILL OF MATERIAL & PARTS	
ITEM	REQ'D	MAT'L	THK.	DESCRIPTION
1	2	C.S. GALV.		LIFTING LUG (TLL-5K-GALV)
2	4	C.S. GALV.		HOLD DOWN LUG (BOLK)
3	30	C.S. GALV.		3/8"ø x 3 1/2" LG. BOLT w/ NUT & (2) FLAT WASHERS (LADDER CLIPS)
4	1	FRP (PE)		OSHA APPROVED CAGED LADDER 33"-3" LG - SEE DETAILS
5	2	FRP (PE)		LADDER HOLD DOWN CLIP - SEE DETAIL

GENERAL NOTES:

- FABRICATION SPECIFICATION :
1. ☒ HAND LAY-UP PER NBS PS 15-69 AND/OR
2. ☒ HAN LAY-UP PER ASTM D 4097-01
3. ☒ FILAMENT WOVEN PER ASTM D 3299-10
2. RESIN : ISOPHTHALIC
3. SURFACING VEIL : "C" GLASS
- CORROSION LINER : 100 MILLS
4. ☒ FLANGE NOZZLES TO HAVE DRILL PATTERN & THICKNESS PER
5. ☒ ANSI STD. 150-150# DRILLING
6. ☒ THK. RATING OF 25 PSI.
1. ☒ MANWAYS PER NOZZLE SCHEDULE & DETAILS.
5. BOLT HOLES TO STRADDLE PRINCIPAL (0-180°) CENTERLINE
6. ALL BOLTING HARDWARE (BY AFC OR OTHERS) PER ASME
- B7C-1 2015 STD. FIG. 4-10, ALL FLANGE BACKGAINS FLANGE
- BE 1/8" LARGER THAN FLANGE WATER SIDE
7. FLANGED NOZZLES 4" AND THROUGH TO HAVE GUSSETS
- AS SHOWN ON DETAILS.
8. COLOR : WHITE w/ U.V. INHIBITORS
9. NAMEPLATE : REQUIRED
10. CORROTEST : REQUIRED
11. FLAT BOTTOM TANK MUST BE FULLY SUPPORTED ON A
- LEVEL NON-DEFLECTING PAD. PAD MUST BE FLAT TO
- 1/8"± OVER A 10'-0" SPAN.
12. ALL VESSEL NOZZLES BELOW THE LIQUID LEVEL SHOULD
- BE JOINED TO PIPING THROUGH A FLEXIBLE
- CONNECTION OR FLEXIBLE PIPING SYSTEM.
13. IF AIR LOADING IS USED, AFC STRONGLY RECOMMENDS
- THE TANK VENT BE (3) TIMES THE CROSS SECTIONAL
- AREA OF THE INLET LINE. THIS MAY BE ACHIEVED BY
- OPENING TOP MANWAY, IF APPLICABLE.
14. GASKET TO BE FULL FACED WITH A DUROMETER OF
- 40-70. MATING FLANGES ARE TO BE FLAT FACED.
15. SEE AFC'S HANDLING AND INSTALLATION INSTRUCTIONS
- FOR PROPER HANDLING, UNLOADING & INSTALLING
- THIS VESSEL.
16. ALL CUT AND EXPOSED EDGES SHALL BE RESIN COATED
17. PRIOR TO SHIPMENT, VESSEL INSIDES MUST BE
- CLEANED & ALL OPENINGS CAPPED.
18. DETAILS NOT TO SCALE UNLESS OTHERWISE STATED.

AFC® AUGUSTA FIBERGLASS®
 85 LAKE CYNTHIA ROAD
 BLACKVILLE, SC 29817
 803-284-2246
info@augustafiberglass.com

CUSTOMER: CHARLOTTE PIPE AND FOUNDRY COMPANY
 FOR: FDRY - CHARLOTTE, N.C. PLANT

EQUIP. NO.: 1ST TANK
 CUSTOMER P.O. NO.: 65063299

REF. NO.: 82006
 ACING: ISOPHTHALIC
 DESIGN PRESS.: ATMOSPHERIC
 DESIGN TEMP.: AMBIENT
 SPECIFIC GRAVITY: 1.00
 CONTENTS: RECYCLED WATER
 CAPACITY: 25,000 GALLONS (NOMINAL)
 ESTIM. WEIGHT: 5,950 LBS. (EMPTY)
 DATE BUILT: 2017

NAMEPLATE DETAIL (BLACK LETTERING): FRP ENCAPSULATED

**CHARLOTTE PIPE AND FOUNDRY CO.
 FDRY - CHARLOTTE, N.C. PLANT
 1335 SOUTH CLARKSON STREET
 CHARLOTTE, NC 28208**

**(1) 12'-0" ID X 29'-9" SSH (FB,DT)
 25,000 GALLON
 RECYCLED WATER TANK**

EQUIP. NO. : 1ST TANK			
SPEC. NO. :			
PROJECT NO. :			
DRAWN BY J. WINNINGHAM	P.O. # 65063299	R14 FIB #	8206GA17.DWG
DATE 07/26/2017	APPROVAL	Q/C	CUST SHIP QA F MISC
		0	E MAIL 1 1 1
DATE JAN. 11, 2017	DRAWING NO. AR-7249	1	E MAIL 1 1 1 1
AFC JOB # 82006	SHT. # 1 OF 2	2	E MAIL 1 1 1 1
	REV. # 3	3	E MAIL 3 1 1 1
SCALE: .375"=1' 0" 36" X 24" = 5'			

©COPYRIGHT 2017 AUGUSTA FIBERGLASS
 ALL RIGHTS RESERVED. NO REPRODUCTION OR REDESCRIPTION
 WITHOUT WRITING PERMISSION IS GRANTED. THE INFORMATION OR DESCRIPTION
 ON THIS DRAWING IS NOT TO BE COPIED, LOANED, COPIED UPON FOR MANUFACTURING, TRADING
 OR ANY OTHER PURPOSE WITHOUT WRITING PERMISSION FROM THE AUGUSTA FIBERGLASS, BLACKVILLE, SC
 ANY UNAUTHORIZED USE OR REUSE BY THE CUSTOMER OR OTHERS, WITHOUT WRITING PERMISSION
 FROM THE AUGUSTA FIBERGLASS, BLACKVILLE, SC, IS PROHIBITED. THE CUSTOMER WILL BE AT
 THE CUSTOMERS SOLE RISK AND WITHOUT LIABILITY OF LOSS, EXPOSURE TO AUGUSTA FIBERGLASS,
 BLACKVILLE, SC, SHALL BE LIMITED TO THE EXTENT ALLOWED BY LAW. WARRANTY AND HOLD
 HARMLESS AUGUSTA FIBERGLASS FROM ALL CLAIMS, DAMAGES, LOSSES AND EXPENSES.

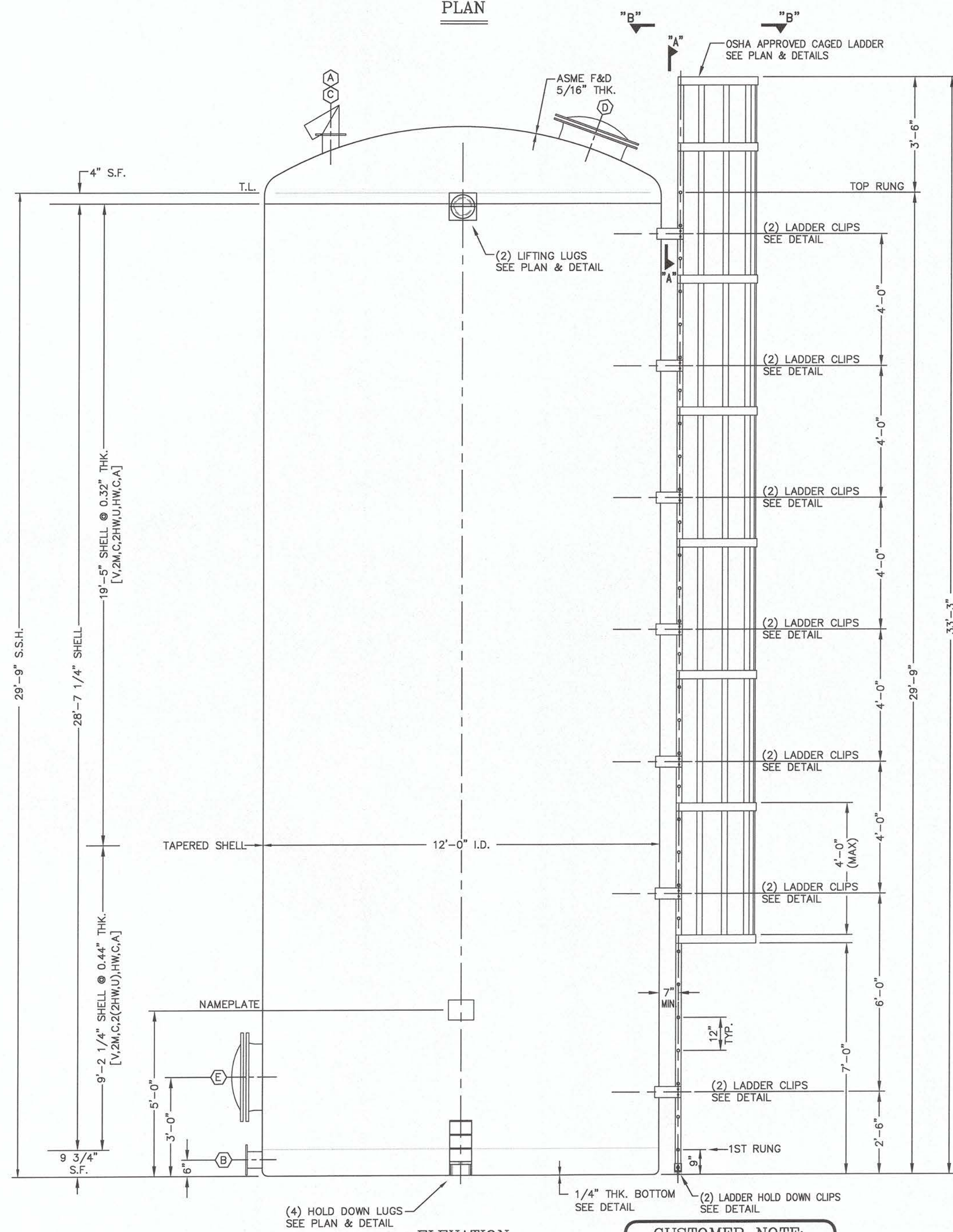
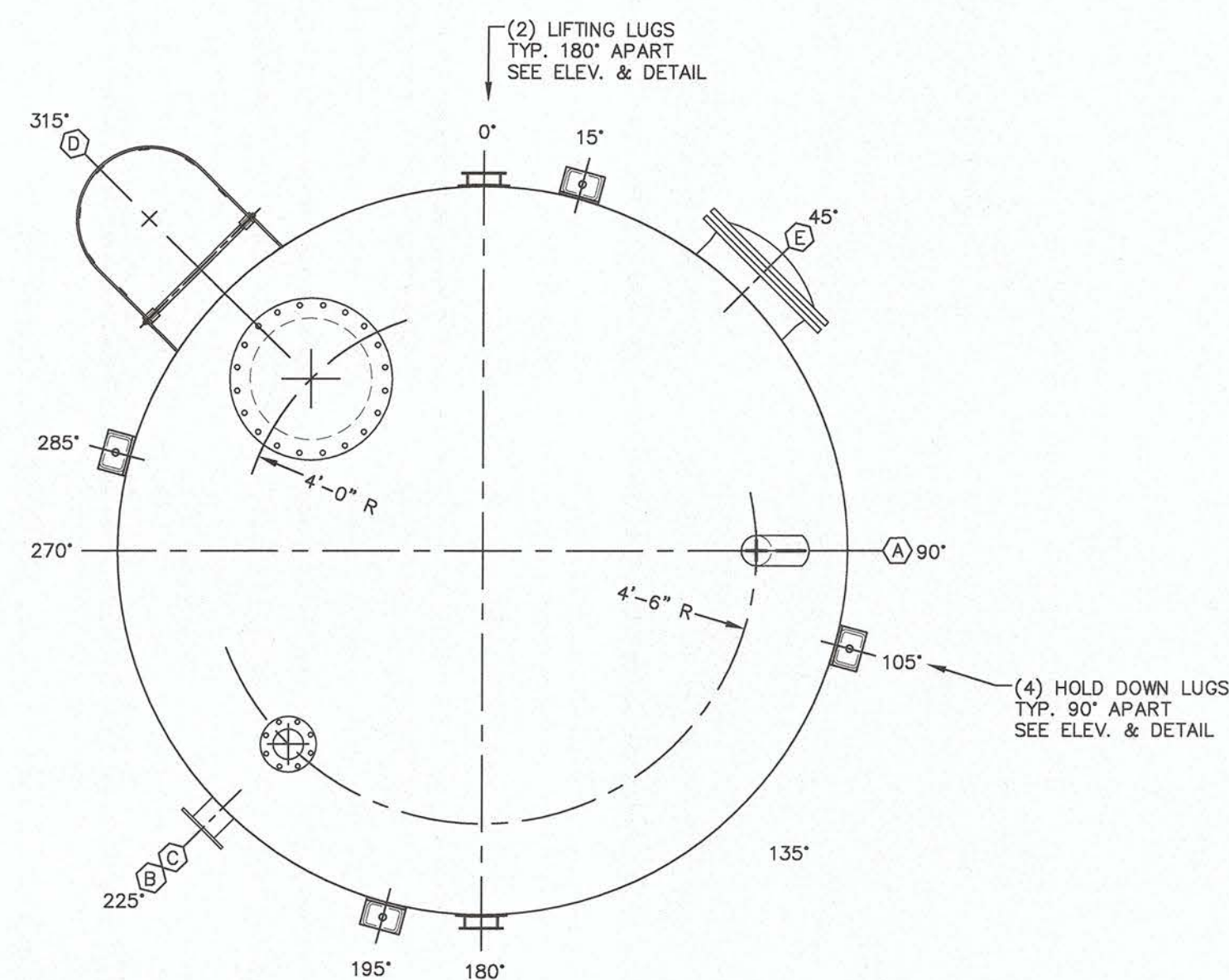
NO.	REVISION	DESCRIPTION	BY	CK	APV	DATE
0	ISSUED FOR APPROVAL		JSW	RA,WR,WR,WR		01/17/17
1	ISSUED FOR APP. & COMP. FAB.		JSW	JR	LF	01/24/17
2	REISSUED FOR APP. & COMP. FAB.	NOZZLE PROJECTION CHANGED, COLOR CHANGED	JSW	JR		01/30/17
3	ISSUED FOR FABRICATION	"NOZZLE A" CHANGED TO 4"	JSW			02/01/17
4						
5						

CUSTOMER: PLEASE CHECK STATUS OF DRAWING

<input type="checkbox"/> ISSUE FOR FABRICATION.	<input type="checkbox"/> REVISE & RESUBMIT FOR APPROVAL.
<input type="checkbox"/> ISSUE FOR FABRICATION WITH NOTED EXCEPTIONS.	<input type="checkbox"/> OTHER: _____
<input type="checkbox"/> ISSUE FOR COMPONENT FABRICATION. (HEAD, BTM & SHELL)	

AUTHORIZED BY: NAME/DATE: _____

CERTIFIED FABRICATION DRAWING

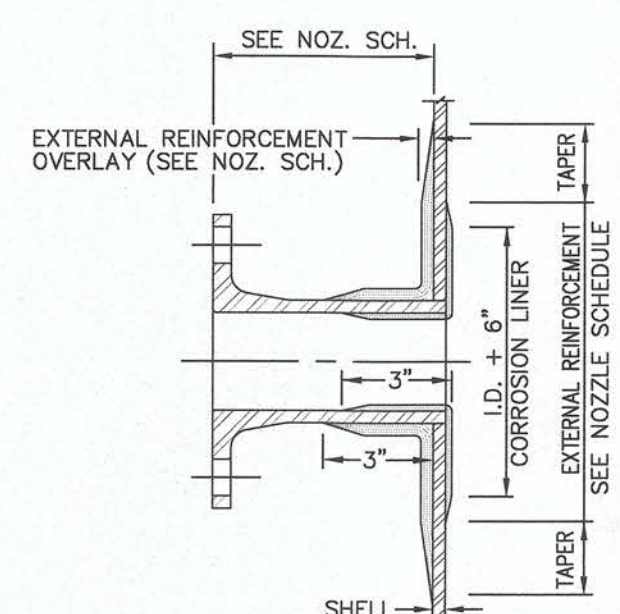
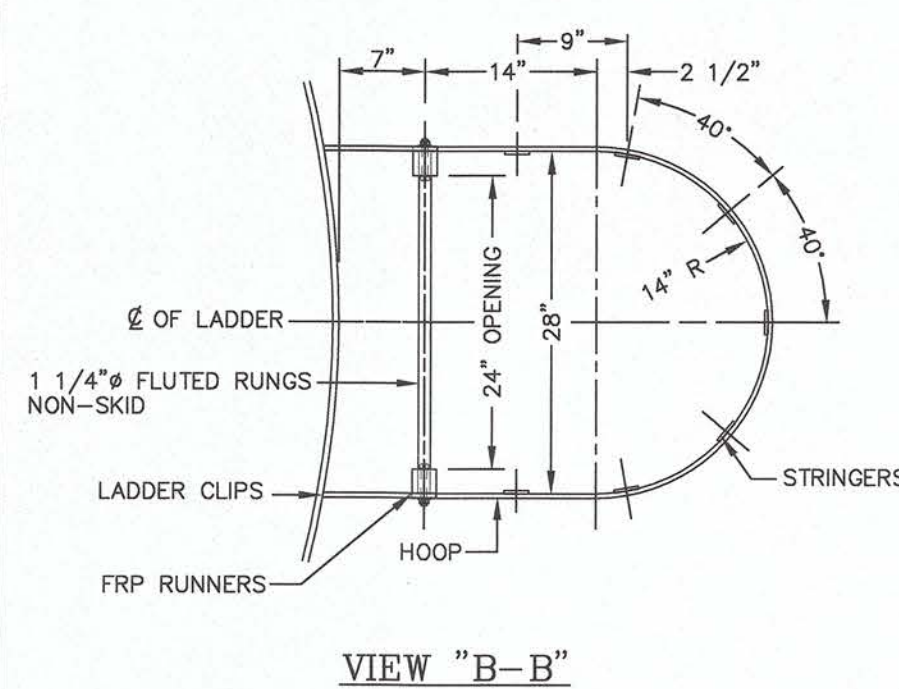
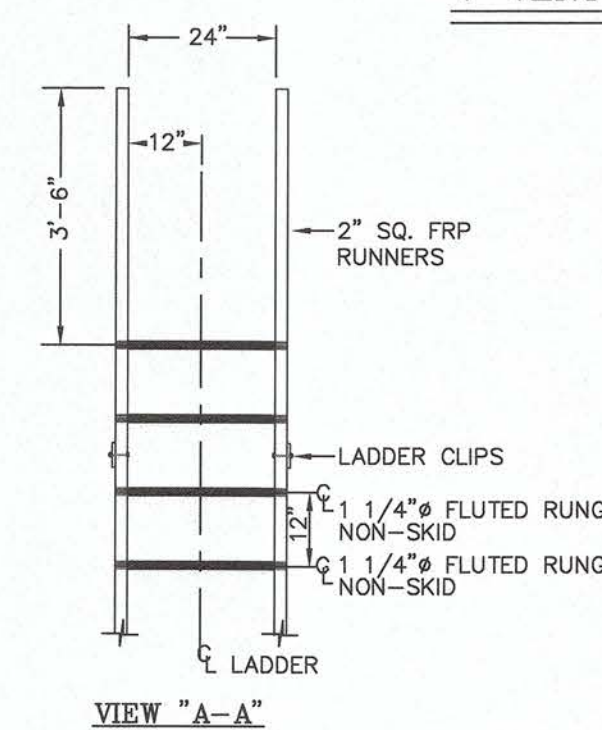
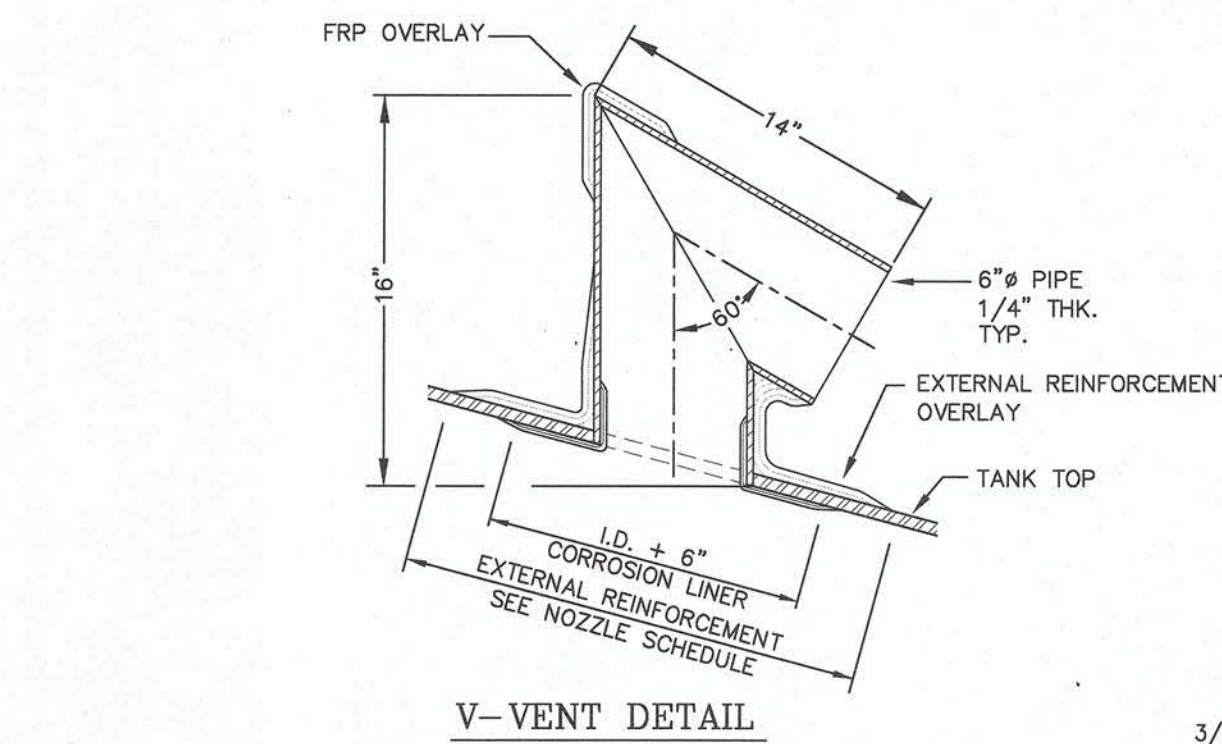


SHOP NOTE
DO NOT EXTEND LAY-UP FOR
NOZZLE "B" ON TO BOTTOM
OF TANK.

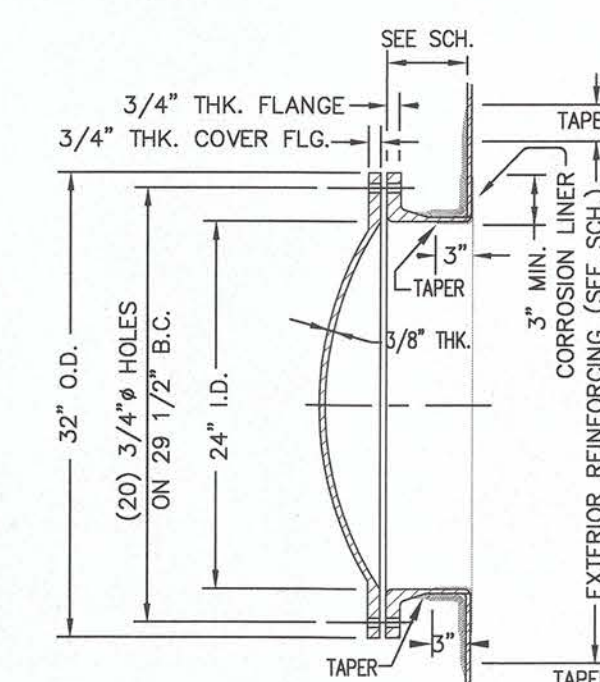
ELEVATION

SEE PLAN FOR TRUE ORIENTATION

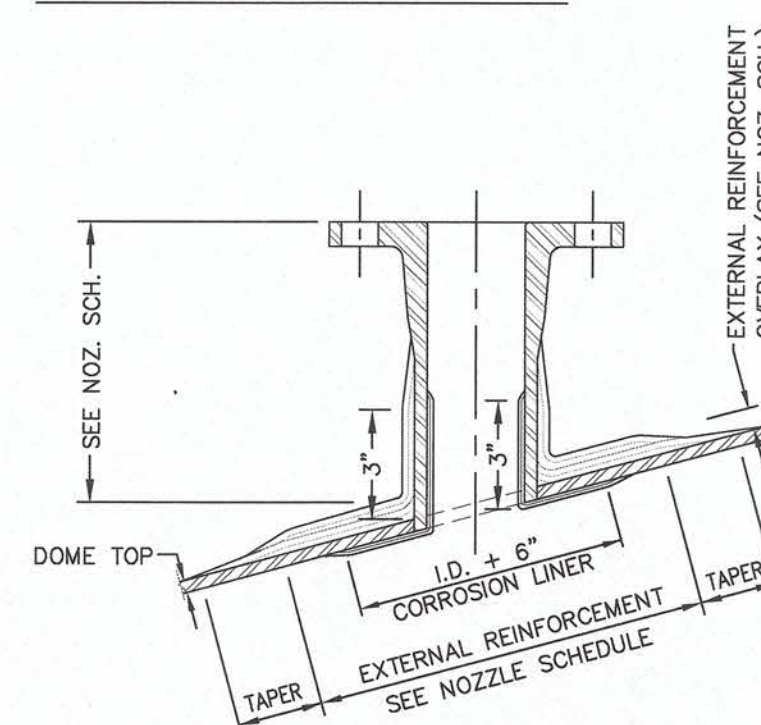
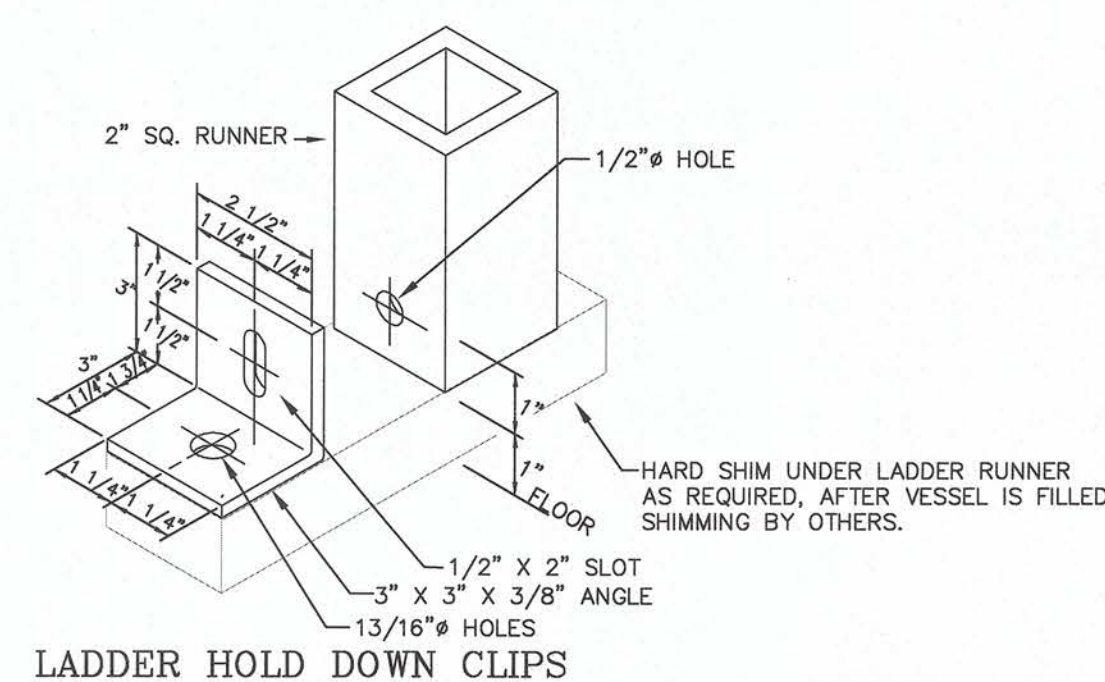
CUSTOMER NOTE:
LADDER MUST BE SUPPORTED
FROM PAD, NOT TANK WALL.
IF REQUIRED, POUR EXTENSION
TO TANK PAD.



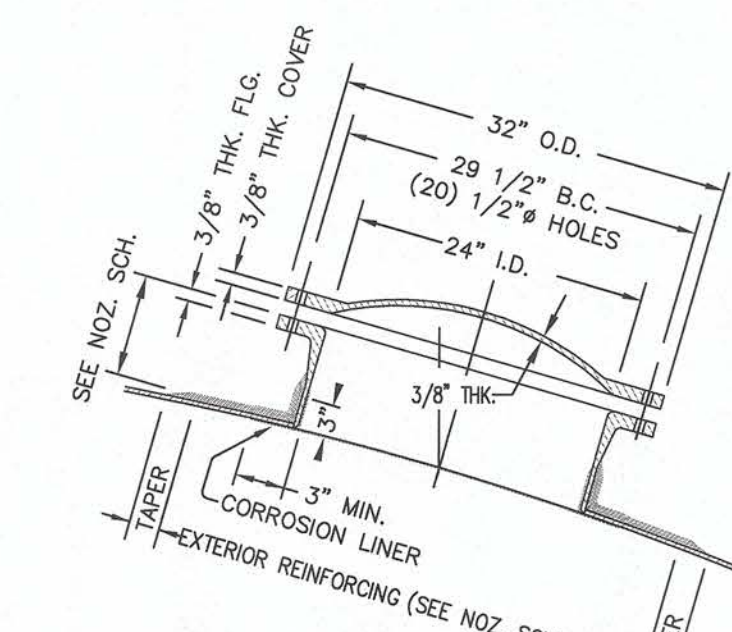
TYP. SIDEWALL NOZZLE DETAIL



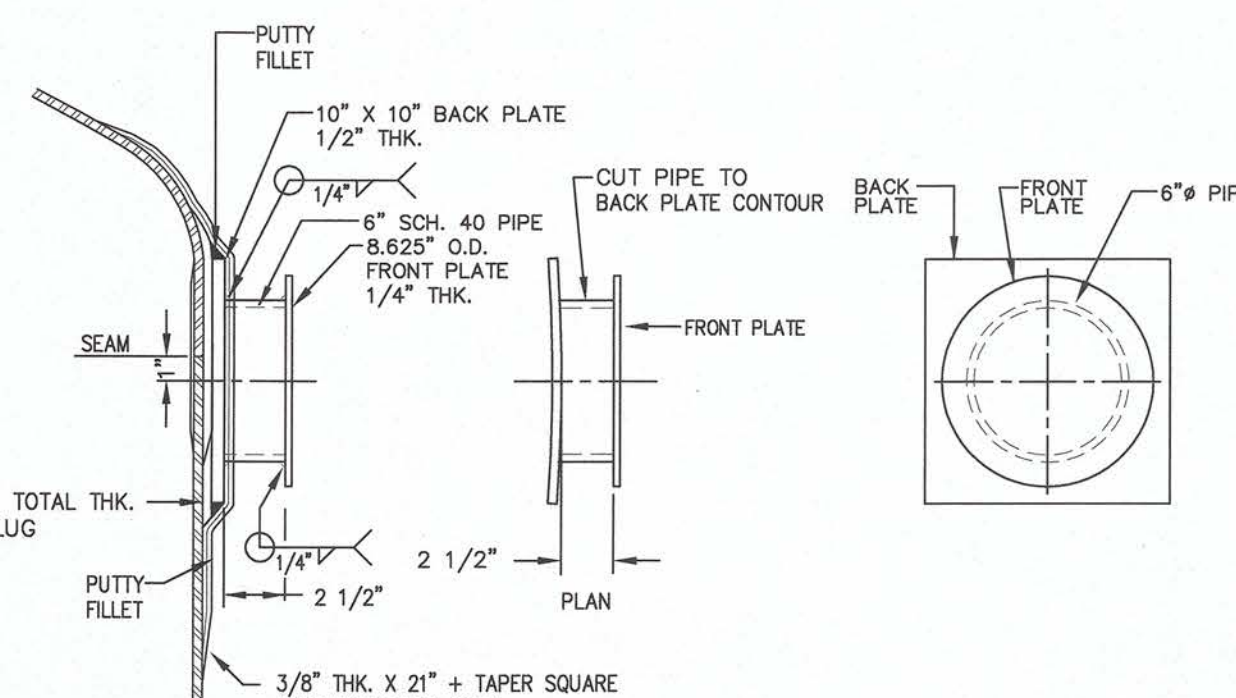
SIDE MANWAY DETAIL
WITH DOME COVER



TYP. DOME NOZZLE DETAIL

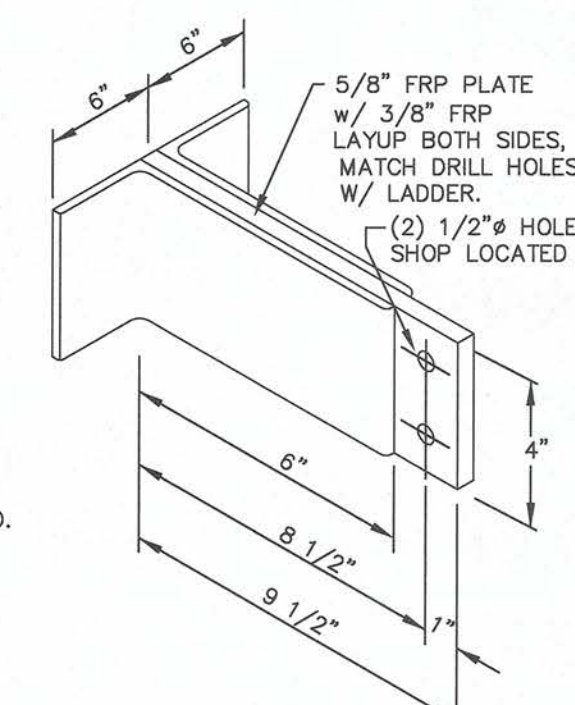


TOP MANWAY DETAIL
WITH DOME COVER

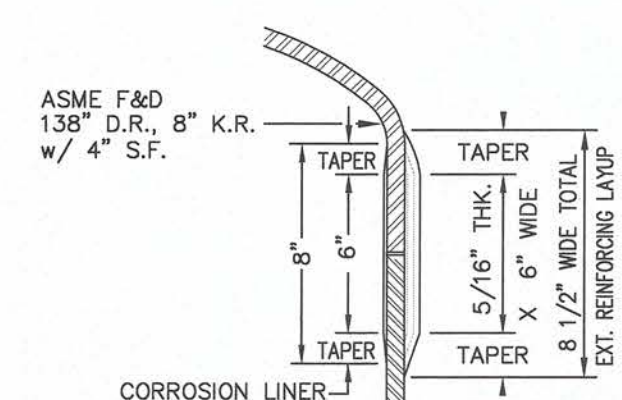


NOTES: 1. SPREADER BAR SHOULD BE USED FOR LIFTING
2. LUGS NOT DESIGNED FOR LATERAL LOAD.

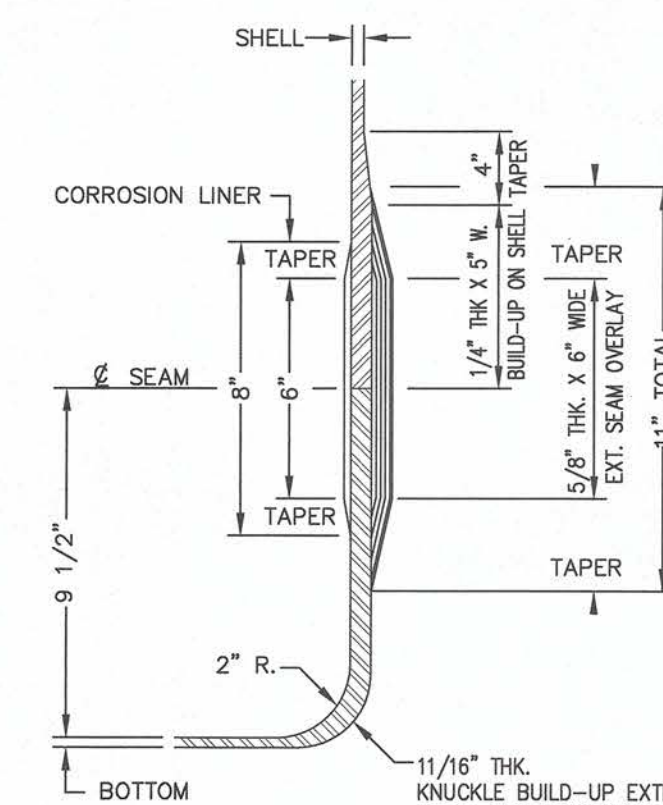
LIFTING LUG DETAIL
5K



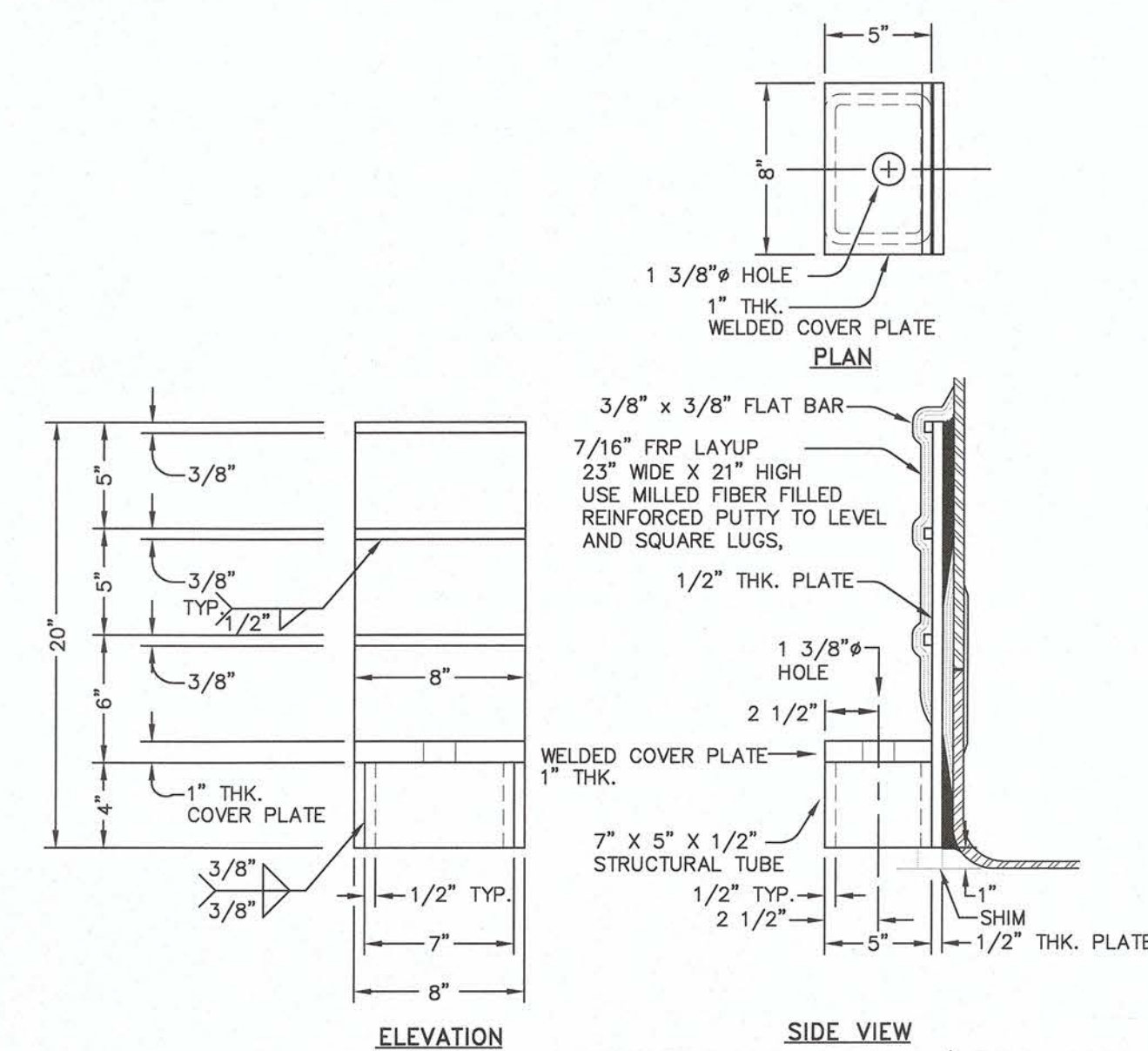
LADDER CLIP DETAIL



HEAD-SHELL SEAM DETAIL



BOTTOM-SHELL SEAM DETAIL



NOTE : AFTER VESSEL IS FILLED, LUGS MUST BE SHIMMED FLUSH BY OTHERS.
ANCHOR BOLTS BY OTHERS, BOTTOM NUT TO BE HAND TIGHTENED +1/4 TURN, THEN TOP NUT TO LOCK.

CUSTOMER NOTE: REGARDING ALL FLANGED NOZZLES THAT ARE FLUSH w/ TANK I.D.
THE INTERNAL DIA. WILL BE REDUCED FROM MOLD SIZE, DUE TO THE LAYUP NECESSARY FOR PROPER INSTALLATION
PLEASE CONSIDER THIS WHEN DETERMINING NOZZLE SIZES REQUIRED FOR CONNECTIONS THAT HAVE INT. PROBES, ETC.

NOZZLE SCHEDULE							
MARK	QTY.	SIZE	PROJ.	SERVICE	REMARKS :	REINF. THK.	DIAMETER FULL THK. w/ INSULATION OVERALL
A	1	6"	SEE DETAIL	V-VENT		3/8"	12" 15"
B	1	6"	6"	DRAIN		5/8"	12" 17"
C	1	6"	6"	INLET		3/8"	12" 15"
D	1	24"	6"	TOP MANWAY	w/ DOME COVER	3/8"	32" 35"
E	1	24"	6"	SIDE MANWAY	w/ DOME COVER	9/16"	48" 52 1/2"

MATERIAL SHOWN FOR Q'D ONE (1) TANK REQ'D				BILL OF MATERIAL & PARTS
ITEM	REQ'D	MAT'L	THK.	DESCRIPTION
1	2	C.S. GALV.		LIFTING LUG (TLL--5K--GALV)
2	4	C.S. GALV.		HOLD DOWN LUG (20K)
3	30	C.S. GALV.		3/8" x 3 1/2" LG. BOLT w/ NUT & (2) FLAT WASHERS (LADDER CLIPS)
4	1	FRP (PE)		OSHA APPROVED CAGED LADDER 33'-3" LG - SEE DETAILS
5	2	FRP (PE)		LADDER HOLD DOWN CLIP - SEE DETAIL

GENERAL NOTES:

1. FABRICATION SPECIFICATION :
- ❑ HAND LAY-UP PER NBS PS 15-69 AND/OR
 - ❑ HAND LAY-UP PER ASTM D 4097-01
 - ❑ FILAMENT WOUND PER ASTM D 3299-10
 - 2. RESIN : ISOPHTHALIC
 - 3. SURFACING VEIL : "C" GLASS
 - 4. CORROSION LINING : 100 MILS
 - 5. FLANGED NOZZLES TO HAVE DRILL PATTERN & THICKNESS PER
❑ ANSI STD. B-16.5 FOR 150# DRILLING
 - ❑ THK. RATING OF 25 PSI.
 - 6. ❑ MANWAYS PER NOZZLE SCHEDULE & DETAILS.
 - 7. BOLT HOLES TO STRADDLE CENTERLINE (0-180° CENTERLINES).
 - 8. ALL BOLTING HARDWARE (BY AFC OR OTHERS) PER ASME
RPT-1 2015 STD. FIG. 4-10. ALL FLANGE BACKGACING WILL
BE 1/8" LARGER THAN WIGER. 4-10.
 - 9. FLANGED NOZZLES & END UNIDERS TO HAVE GUSSETS
AS SHOWN ON DETAILS.
 - 10. COLOR : WHITE w/ U.V. INHIBITORS
 - 11. NAMEPLATE : REQUIRED
 - 12. HYDROTEST : REQUIRED
 - 13. FLAT BOTTOM TANK MANWAY MUST BE FULLY SUPPORTED ON A
LEVEL NON-DEFLECTING PAD. PAD MUST BE FLAT TO
1/8" OVER A 10'-0" SPAN.
 - 14. ALL VESSEL NOZZLES ABOVE THE LIQUID LEVEL SHOULD
BE WELDED TO A FLEXIBLE PIPE OR A FLEXIBLE
CONNECTION OR FLEXIBLE PIPING SYSTEM.
 - 15. IF AIR FLOWLING IS USED, AFC STRONGLY RECOMMENDS
THE TANK VENT BE (3) TIMES THE CROSS SECTIONAL
AREA OF THE INLET. THIS MAY BE ACHIEVED BY
OPENING TOP MANWAY, IF APPLICABLE.
 - 16. GASKET TO BE FULL FACED WITH A DUROMETER OF
40-70. MATING FLANGES ARE TO BE FLAT FACED.
 - 17. SEE AFC'S HANDLING AND INSTALLATION INSTRUCTIONS
FOR HANDLING, UNLOADING & INSTALLING
THIS VESSEL.
 - 18. ALL CUT AND EXPOSED EDGES SHALL BE RESIN COATED.
 - 19. PRIOR TO SHIPMENT, VESSEL INSIDES MUST BE
CLEANED & ALL OPENINGS PLUGGED.
 - 20. DETAILS NOT TO SCALE UNLESS OTHERWISE STATED.

(AFC)®

AUGUSTA FIBERGLASS®
86 LAKE CYNTHIA ROAD
BLACKVILLE, SC 29817
803-284-2246
engineering@augustafiberglass.com

CUSTOMER: CHARLOTTE TUBE AND FOUNDRY COMPANY
FOR: FDRY - CHARLOTTE, N.C. PLANT

EQUIP. NO.: 2ND TANK
CUSTOMER P.O. NO.: 65063299
AFC JOB NO.: 82006

RESIN: ISOPHTHALIC
DESIGN PRESS.: ATMOSPHERIC
DESIGN TEMP.: AMBIENT

SPECIFIC GRAVITY: 1.00
CONTENTS: RECYCLED WATER
CAPACITY: 50,000 GALLONS (NOMINAL)
ESTM. WEIGHT: 5,900 LBS. (EMPTY)
DATE BUILT: 2017

DATE BUILT:	2017
NAMEPLATE DETAIL (BLACK LETTERING): FRP ENCAPSULATED	

CHARLOTTE PIPE AND FOUNDRY CO.
FDY - CHARLOTTE, N.C. PLANT
1335 SOUTH CLARKSON STREET
CHARLOTTE, NC 28208

(1) 12'-0" ID X 29'-9" SSH (FB,DT)
25,000 GALLON
RECYCLED WATER TANK

EQUIP. NO. 2ND TANK		R14 FILE # B2060817.DWG	
SPEC. NO.		CUST/SHIP OA F MISC	
PROJECT NO.			
DRAWN BY J. WINNINGHAM		P.O. # 65032399	
DFTG. CR. BY APPROVAL			
DATE JAN. 11, 2017		DRAWING NO. AB-7249	
AFSC JOB # 82006		SHT. 2 OF 3	
REV. 3		REV. 3	
SCALE: 3/75" = 1' 0" 3/8" X 24"		COPYRIGHT 2017 AQUADRA FIBERGLASS	

THE DRAWINGS, ACCOMPANYING COMPUTER DISKS AND INFORMATION OR DESCRIPTIVE MATERIAL ARE THE PROPERTY OF AQUADRA FIBERGLASS AND ARE LOANED TO YOUR OFFICE. THIS MATERIAL MUST NOT BE REPRODUCED, LOANED, COPIED OR USED FOR MANUFACTURING TENDERS OR OTHER PURPOSES WITHOUT LIBRARIAN OR LEGAL EXPERTISE TO AQUADRA FIBERGLASS. ANY UNAUTHORIZED USE OR DISUSE BY THE CUSTOMER OR OTHERS, WITHOUT WRITTEN VERIFICATION OR COORDINATION BY AQUADRA FIBERGLASS FOR THE SPECIFIC PURPOSE INTENDED, WILL BE AT THE USER'S RISK. WITHOUT LIABILITY OR LEGAL EXPERTISE TO AQUADRA FIBERGLASS, FURTHER, THE CUSTOMER SHALL, TO THE FULLEST EXTENT PERMITTED BY LAW, INDEMNIFY AND HOLD HARMLESS AQUADRA FIBERGLASS FROM AND AGAINST ALL DAMAGES, LOSSES AND EXPENSES.

NO.	REVISION	DESCRIPTION	BY	CK	APV	DATE
0	ISSUED FOR APPROVAL		JSW	RAJW	RWJR	01/17/17
1	ISSUED FOR APP. & COMP. FAB.		JSW	JR	LF	01/24/17
2	REISSUED FOR APP. & COMP. FAB.	COLOR CHANGED	JSW	JR		01/30/17
3	ISSUED FOR FABRICATION		JSW			02/01/17
4						
5						

CUSTOMER: PLEASE CHECK STATUS OF DRAWING

☐ ISSUE FOR FABRICATION. ☐ REVISE & RESUBMIT FOR APPROVAL.
☐ ISSUE FOR FABRICATION WITH NOTED EXCEPTIONS. ☐ OTHER: _____

AUTHORIZED BY: NAME/DATE

**CERTIFIED
FABRICATION DRAWING**

