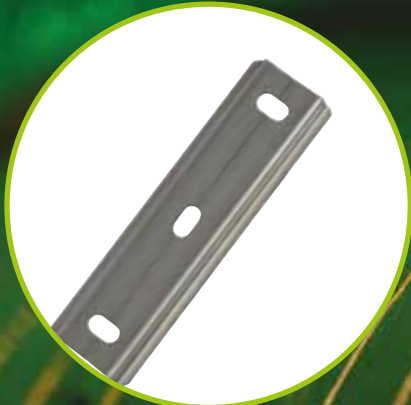


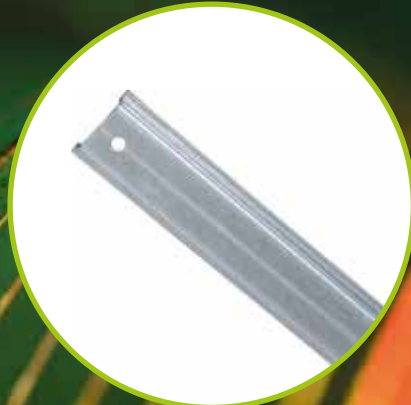
A close-up photograph of a green, textured surface, possibly a metal or plastic component, with a red border on the left side. The texture is granular and uneven. A horizontal green bar is overlaid across the middle of the image, containing white text.

DIN rail cutting machines

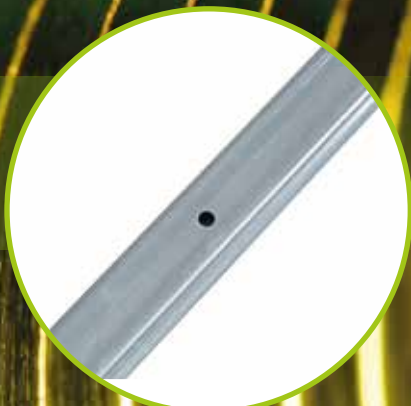
TECHNICAL APPLICATION



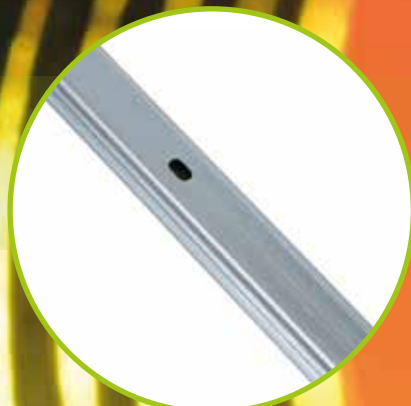
HOLES AND CUT ACHIEVABLE
WITH ART. 9050-52-54-55



HOLE AND CUT ACHIEVABLE
WITH ART. 9056 - 58



HOLE ACHIEVABLE WITH ART. 9056



HOLE ACHIEVABLE
WITH ART. 9050-52-54-55



HOLES AND CUT ACHIEVABLE
WITH ART. 9050-52-54



HOLES AND CUT ACHIEVABLE
WITH ART. 9050-52-54

Manual din rail cutting machines

For cutting and punching standard and special Din Rails

9050

It cuts four profiles in the desired positions and punches oval holes 6,5 x12 mm in longitudinal and transversal position.
It is equipped with 1-meter ruler and slider.

Characteristics

Weight	19 Kg
Width	180 mm
Height complete with lever	990 mm
Lenght	1.160 mm (with ruler)



9056

It cuts 4 standard din rails and punches a round hole \varnothing 6,5 mm
It is equipped complete with 1 meter ruler and slider.

Characteristics

Weight	14 Kg
Width	180 mm
Height complete with lever	990 mm
Lenght	1.160 mm (with ruler)



9058

It cuts two din rails impressions in the desired position and it punches a round hole \varnothing 6, 5 mm at the beginning of the din rail.
It is equipped with 1 mt. ruler and slider.

Characteristics

Weight	11 Kg
Width	130 mm
Height complete with lever	870 mm
Lenght	1.150 mm (with ruler)



Din rail cutting machines

For cutting and punching standard and special Din rails

9052 Pneumatic

Very fast machine and effortless user experience. It cuts with rapidity and with a low air consumption with a feeding pressure from 7 to 9 bars.

The pneumatic version is equipped with a foot pedal. It cuts four standard din rails in the desired positions and punches oval holes 6,5x12 mm in a longitudinal and transversal position. It is equipped with 1 meter ruler and slider.



Characteristics

Dimensions without ruler	180x110xh540 mm
Total Weight	31 Kg
Patented model.	

9054 Oleodynamic

It has the same features of the model 9050. Very fast machine and effortless user experience. This tool takes advantage of the strength of an oleodynamic cylinder, which acts directly on the cutting blade.

It can be used with all IMB pumps or electric controls units.

It is equipped with 1 meter ruler and slider.



Characteristics

Dimensions without ruler	180x110xh300 mm.
Total Weight	14 Kg
Patented model.	

POWER UNITS
PAG. 80÷87

9055 For Tris unit

It has the same working characteristics of the din rail model 9050.

It is easy to install it on the Tris Unit.



Characteristics

Length	180 mm
Width	70 mm
Height	120 mm
Weight	12 Kg

STANDARD DIN RAILS

Special rail shapes and holes on request. Also on aluminium.

