

9023

Punching cylinder

For flat and angular bars

It can be used with all MULTIFOR pumps and control units.
 It is particularly practical and handy.
 It allows the punching of flat and angular bars in difficult positions and on pylons.
 It is used especially for connections in transformer cabinets and for electrical switchboards.
 This tool is very reliable like all our MULTIFOR equipments.
On request, we can realize special sizes.
For a correct use of the punches, the operator should not punch bars thicker than the diameter of the same punch.
On request, it can be supplied with 90° connector.

Technical Characteristics

Power	120 kN
Max. Working pressure	700 bar
Stroke	14 mm
Internal depth	30 mm
External depth	20 mm
Copper bar thickness	10 mm max
Thickness of other materials:	according to the resistance and hole Ø
Lenght	270 mm
Width	135 mm
Weight	5,7 Kg



Kit punching cylinder 9023D

Odd size code	Ø Punch mm.
9511	7
9513	9
9515	11
9517	13
9519	15
9521	17

Kit punching cylinder 9023P

Even size code	Ø Punch mm.
9512	8
9514	10
9516	12
9518	14
9520	16
9522	18



It is supplied with metal case and n. 6 pairs of punches (odd sizes or even sizes).

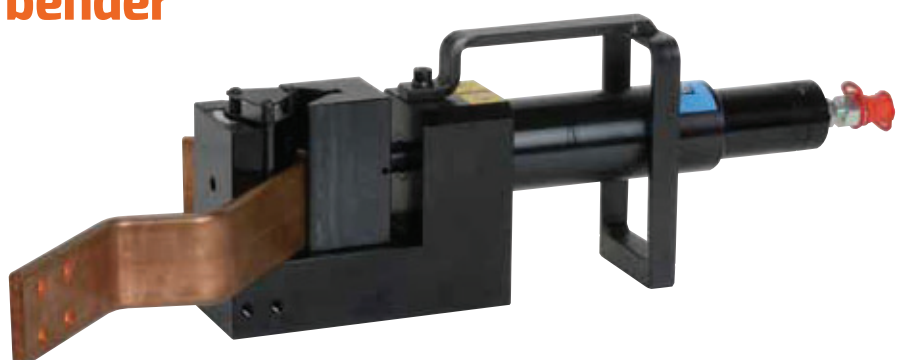
TRIS WORK UNIT FOR COPPER AND METAL BARS

9047 Portable bar bender

Bar bender built for bending copper bars in workshops or in site.
 Thanks to its structure and to its integrated protractor, it works on small and large quantities of bars until 100 mm width.
 This tool is equipped with 2 female bending tools of different dimension for several thickness and bending radius.
 It can operate with all our power units included in our catalogue.

Technical Characteristics

Power	50 kN
Dimensions	78x150x190h mm
Weight	18 Kg
Stroke	50 mm
Adjustable stroke	30 mm
Material bending	copper 100x8/60x10 mm max.
Equipped with n. 2 bending tools and protractor.	



Mechanical end-stroke - maximum accuracy



Integrated protractor indicator