



Horizontal Baler Systems Custom Designed For Your Application

SPECIFICATIONS

MODEL	HH-60	HX-60	HX-72
Bale Size L x W x H	60" x 30" x 40"	60" x 30" x 40"	72" x 42" x 48"
Bale Weight - Corrugated	850 - 1100 Lbs.	1100 - 1400 Lbs.	1800 - 2200 Lbs.
Plastic	700 - 850 Lbs.	900 - 1100 Lbs.	NR
Operating Pressure - Normal	2000 psi	2800 psi	2000 psi
Maximum	2400 psi	3100 psi	2400 psi
Motor (230/460 VAC)	20 hp	25 hp	30 hp
Pump Capacity	36 gpm	34 gpm	63 gpm
Main Cylinder - Bore	7"	7"	8"
Stroke	54"	54"	70"
Rod	4"	4"	5"
Door Cylinder - Bore	3 1/2"	(2) 4"	4"
Stroke	12"	12"	12"
Platen Force - Normal	77,000 lbs.	107,800 lbs.	100,500 lbs.
Maximum	92,400 lbs.	119,300 lbs.	120,800 lbs.
Tank Capacity	80 gal.	80 gal.	180 gal.
Cycle Time	25 sec.	20 sec.	24 sec.

DIMENSIONS	HH-60	HX-60	HX-72
A Overall Width	46"	46"	67"
B Overall Height	86"	86"	94"
C Overall Length	200"	200"	248"
D Charge Opening Width	30"	30"	40"
E Charge Opening Length	42"	42"	57"
F Frame Height	49"	49"	58"

STANDARD FEATURES

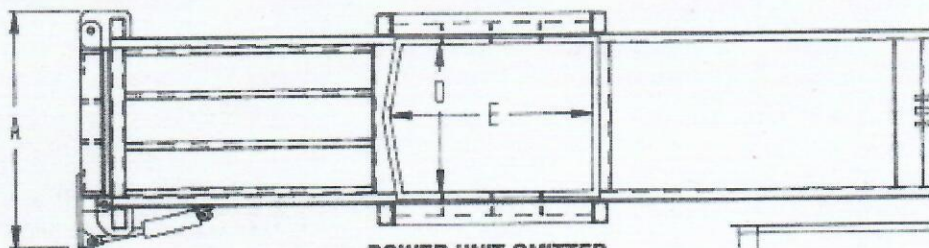
- > UL/UL Canada listed Control Panel
- > Programmable Controller standard on all models
- > Automatic Bale-Sizing System
- > Full-Bale and Advance Warning Indicators
- > Built-in Shear Blade
- > Automatic Cycle controlled by Photocell
- > Automatic Bale-Ejection System
- > Feed Hopper

OPTIONAL FEATURES

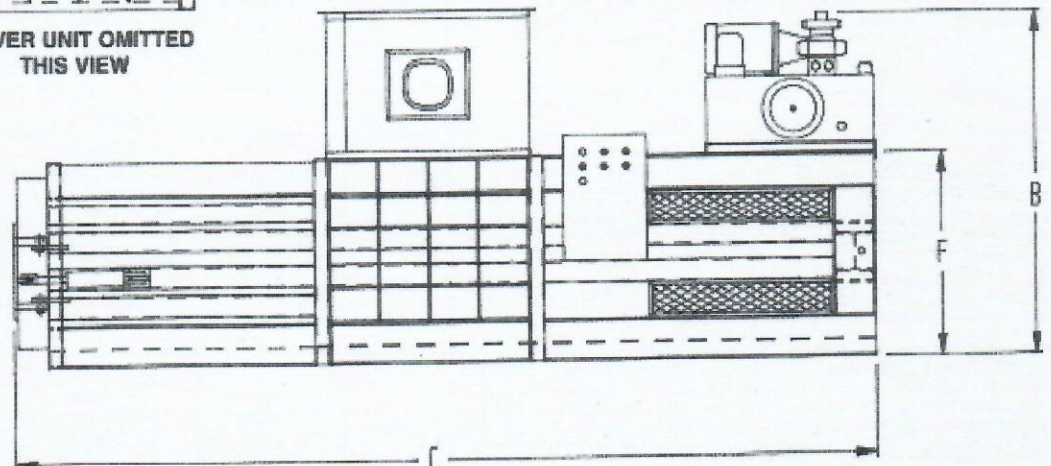
- > Remote Power Unit
- > Conveyor Feed Controls with Photocell
- > Forced Air/Oil Cooler
- > Semi-automatic Wire-tying Systems
- > Feed Conveyors
- > Bale-handling Roller Conveyors
- > Custom Feed Hoppers

NOTE: For continuous operation the oil cooler option is required.

In order to provide the most currently engineered and designed equipment, we reserve the right to change specifications without prior notice. This brochure is intended to provide information only and should not be used in an arbitrary manner to judge equipment for any particular purpose. Performance may vary with application. Products must be installed and operated according to required standards, codes, regulations and safety procedures. Only the standard written warranty issued by J.V. Manufacturing, Inc. applies.



POWER UNIT OMITTED
THIS VIEW



This equipment conforms to all current ANSI Z 245.5 safety standards.

Manufacturing a full line of CRAM-A-LOT® Solid Waste Equipment