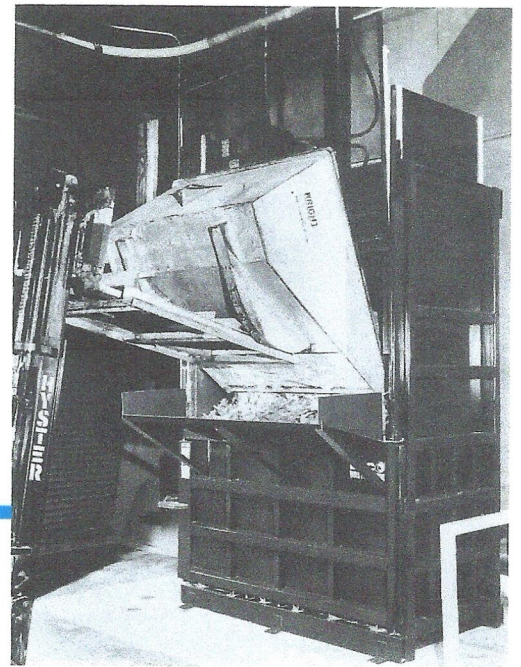


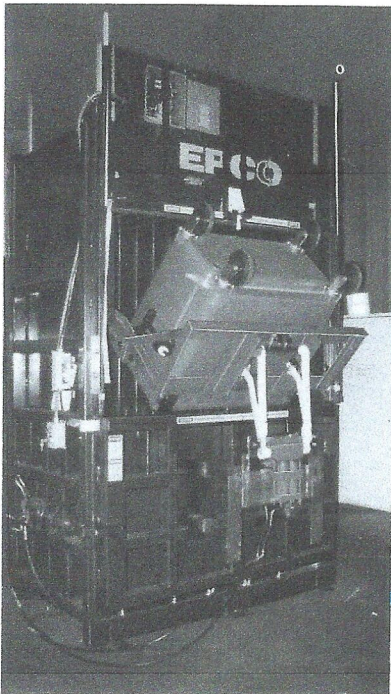
# EPCO 2000 MINI-MRF PRODUCES FROM 8 TO 32 TONS/DAY



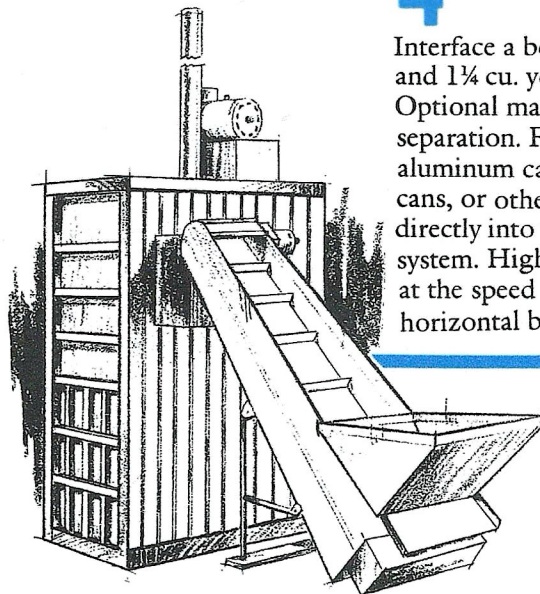
**1** The Series-2000's 3 cu. yd. feed opening (72W x 48H x 44D) coupled with its impact-engineered hydraulic system, bales the toughest and bulkiest materials. High density, 2000 pound bales (OCC) in a fraction of the time of an ordinary vertical baler. Up to 8 TPD.



**2** To 16 TPD. Add our heavy duty loading tray. Load by Skid-Steer Loaders or Self-Dumping Hoppers. Up to 1 1/4 yard capacity. The only vertical downstroke baler that can be loaded in such a way.



**3** Up to 32 TDP. Move up to our 1 1/4 yard hydraulic cart dumper. Dump over 1000 lbs. in just 10 seconds. Accepts most all recycling carts! The best of both worlds. The performance of horizontal baling with the economy of a vertical. Low initial investment.



**4** Interface a belt conveyor and 1 1/4 cu. yd. hopper. Optional magnetic separation. Feed plastics, aluminum cans, bi-metal cans, or other recyclables directly into the Rear-Chute system. High density bales at the speed of a horizontal baler.