

A New Uprising in the Industry

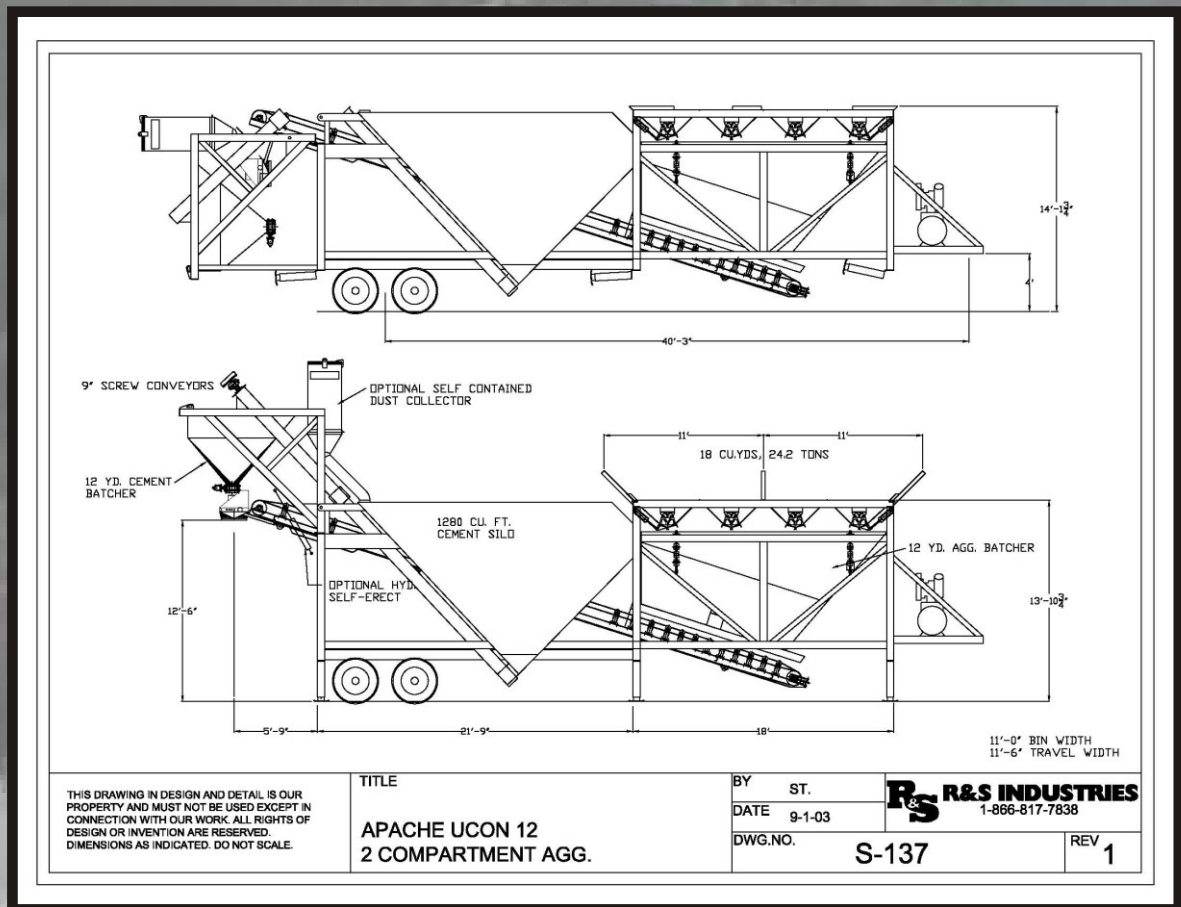
Apache UCON



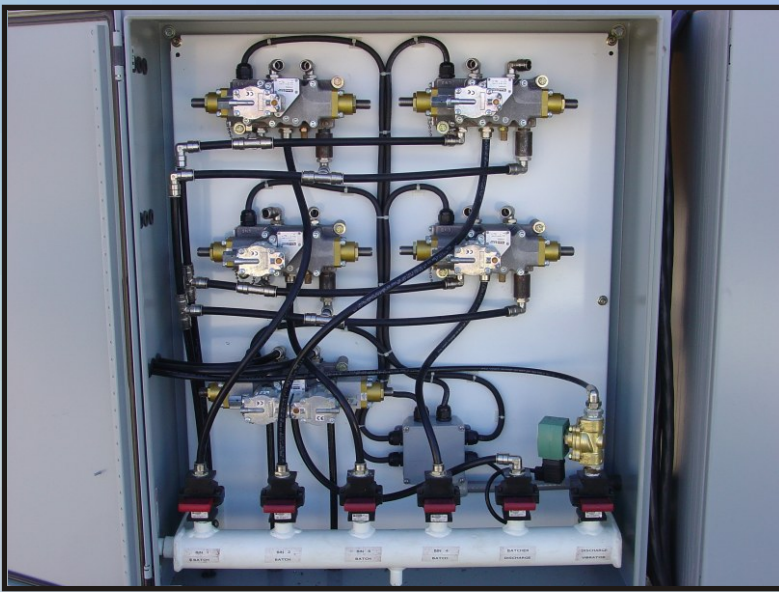
R & S Industries, Inc.
866-817-7838



UCON Travel Position



UCON Operating Position



Centralized Air Panel

All solenoid valves are mounted in a NEMA enclosure with all the air inlet lines piped into the box and the exhaust air is piped out of the box. Each valve is equipped with a “quick” shut off valve to enable customer to isolate the solenoids for fast and safe change out.



*Central Lubrication System(optional)

All lubrication points on aggregate section can be piped to one location for easy one stop lubrication of all agg. gates and the tail of conveyor. All points are easily identified and located.

Apache UCON Specifications

General Specifications:

Capacity of 165 yds per hour.

All the air piping is factory installed.

This plant is a complete plant on a tandem axle, and moves by one tandem axle truck-tractor.

All the batching controls are electric-over-air manual.

Aggregate Section:

Three hinged compartment overhead storage, heaped cap. Of 47.6 cu. yds or 64.3 tons

12 cu. yd. aggregate weigh batcher

Transportation Section:

Tandem axle with spring suspension, dual wheels and tires.

30" x 40' -0" Aggregate transfer conveyor:

15 HP drive with reducer

Cement Section:

Capacity 1100 cub. Ft. (40 tons)

Plant Dimensions

Overall Length, operating position - 56' 0"

Travel length - 56' 8"

Travel height - 13' 11"

Travel width - 11' 9"

Weight (approximate) - 46000 lbs

Overhead bin charging height - 16' 10.75"

Discharge height - 12' 6"



R & S Industries, Inc.
P. O. Box 88
Brownwood, TX 76804
866-817-7838
www.randsinc.com