

FOR SALE

HYDRALIFT KNUCKLE BOOM COMBINATION CRANE

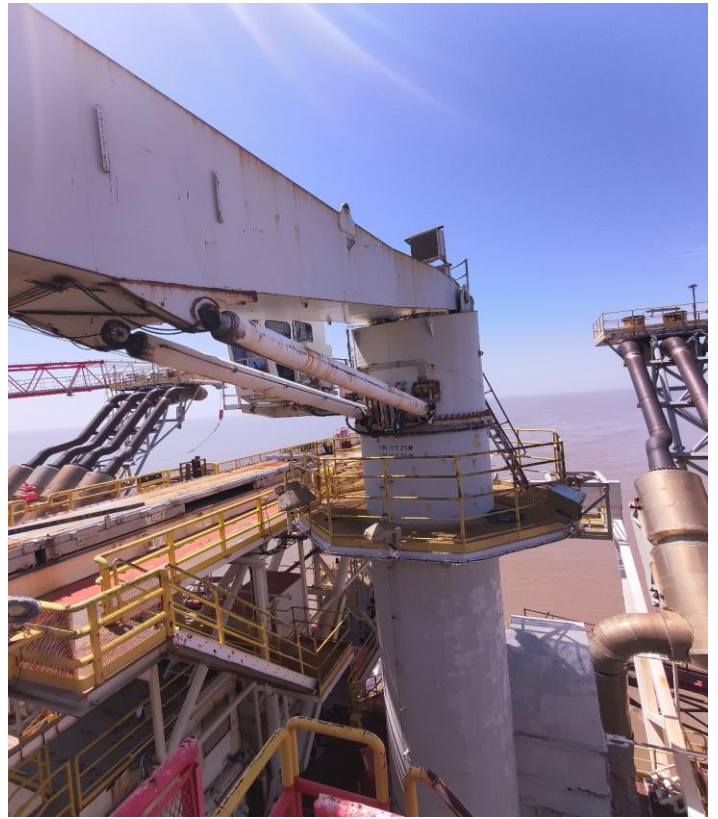
Capacity: 15 MT SWL | Quantity: 1 No. |

VESSEL & ASSET OVERVIEW

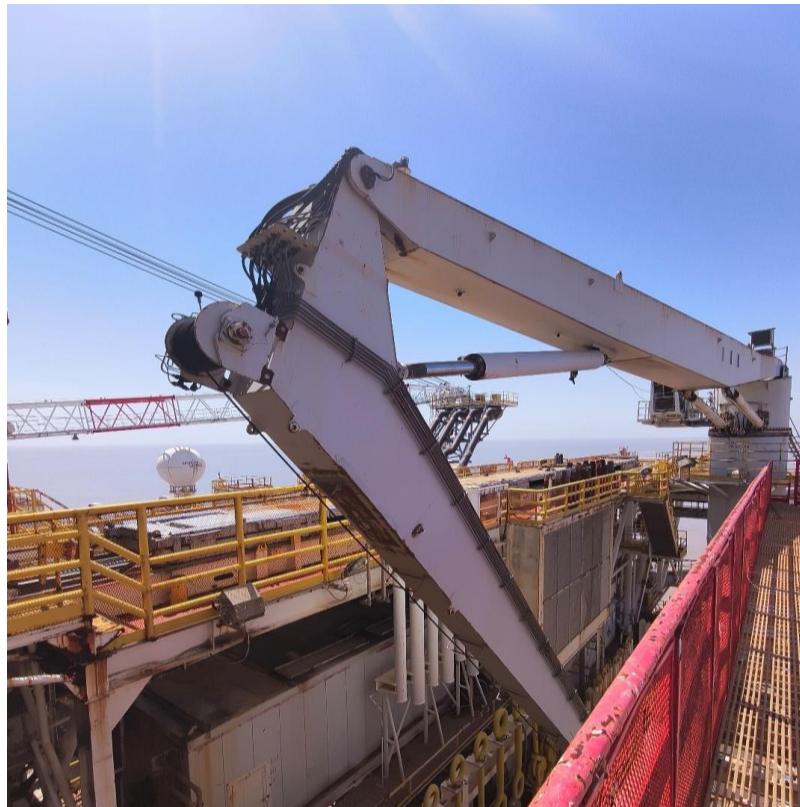
The one (1) Hydralift Knuckle Boom Combination

Hydralift (now NOV) is a globally recognized leader in offshore crane systems. This ABS-certified knuckle boom crane is designed for versatile material handling operations aboard offshore installations, with dual-boom articulation for precise load placement. The crane includes gripper yoke capability for tubular handling up to 20" casing.

KNUCKLE BOOM CRANE ONBOARD VESSEL SS DIU — ACTUAL PHOTOGRAPHS



Hydralift Knuckle Boom Combination Crane — Main Boom & Knuckle Jib Detail



Knuckle Boom Crane — Pedestal & Base Structure View

FULL TECHNICAL SPECIFICATIONS

Make / Manufacturer	Hydralift (now NOV)
Model	KMCVCT 2806-(10-15)-(35-25)
Type	Knuckle Boom Combination Crane
Quantity	1
Location	Aft Main Deck, Port of Centre Line
Boom Length	115 ft (35 m)
Certification / Specification	ABS
SWL — Double Fall	15 tonnes (15–25 m radius) / 10 tonnes (at 35 m radius)
Gripper Yoke SWL	Centre Pad Eye: 7 MT / Gripper: 3.5 MT
Gripper Yoke Sizes	20" and 30" gripper yokes available
Max. Tubular Length	46½ ft (1181.1 mm) — up to 20" casing

ENVIRONMENTAL & DESIGN CONDITIONS

Operational Wind (10 Min. Mean)	25 m/s
Operational Wind (3 Sec. Gust)	30 m/s
Stowed Wind (3 Sec. Gust)	57.7 m/s
Max. Trim Angle (Longitudinal)	3 Degrees
Max. Trim Angle (Transverse)	3 Degrees
Simultaneous Max. Inclinations	Yes

OPERATIONAL RANGE & LIFTING CAPACITIES

Gripper Yoke — Max. Radius	35 m
Gripper Yoke — Min. Radius	6 m
Double Fall — Max. Radius	35 m
Double Fall — Min. Radius	6.5 m
Hook Level (Double Fall, Min. Radius)	~6 m to ~56 m below datum
Hook Level (Double Fall, Max. Radius)	~-0.8 m to ~49.2 m below datum
Slewing Range	360° (Limited — one revolution)

Lifting Capacities — Platform Lift (SWL):

At 6.5 m Radius	10 tonnes
At 15 m Radius	15 tonnes
At 25 m Radius	15 tonnes
At 35 m Radius	10 tonnes

VELOCITIES & ACCELERATIONS

Hoisting Speed (Up / Down with Full Load)	20 m/sec
Luffing — Main Boom (Min. to Max. Angle)	80 sec
Luffing — Main Boom (Max. to Min. Angle)	90 sec
Luffing — Knuckle Boom (Min. to Max. Angle)	70 sec
Luffing — Knuckle Boom (Max. to Min. Angle)	60 sec
Luffing Acceleration Time	~5 sec
Max. Slewing Speed	0.7 rpm
Slewing Acceleration Time	~5 sec

DIMENSIONS & WEIGHTS

Maximum Height (Parked Position)	7,084 mm
Maximum Length (Parked Position)	25,283 mm
Maximum Width	5,600 mm
Distance to Boom Rest (Approx.)	20,000 mm
Pedestal Adapter Weight	3,500 kg
Crane Weight (Above Datum Point)	58,500 kg
Total Weight (Above Datum Point)	62,000 kg (62 tonnes)

AREA CLASSIFICATION & SAFETY

Pedestal (Inside/Outside)	Safe Area
Crane House / Machine Room	Safe Area
Crane Cabin	Safe Area
Main Boom	Safe Area
Knuckle Boom	Zone 2
Hook Load Indicator	Yes — Corrected for boom angle
Alarm	Both (Audible & Visual)
Automatic Brake	Yes
Safety Latch on Hooks	Yes
Crown Saver (Limit Switch)	Yes
Boom Illumination	Yes

DESIGN DYNAMIC FACTORS

Gripper Yoke — Dynamic Factor	1.3
Gripper Yoke — Duty Factor	1.05
2-Fall — Dynamic Factor	1.3
2-Fall — Duty Factor	1.05

KEY FEATURES & HIGHLIGHTS

- ✓ ABS certified — fully compliant with international offshore crane standards
- ✓ Knuckle boom articulation — precise load placement in virtually any position within working radius
- ✓ Dual lifting methods — hydraulic hoisting winch or direct connection to jib boom head
- ✓ 15 MT SWL at 15–25 m radius — versatile capacity for offshore material handling
- ✓ Gripper yoke capability — handling tubulars up to 20" casing (46½ ft length)
- ✓ 20" and 30" gripper yokes available — dual-size configuration for flexible tubular operations
- ✓ 360° slewing range — full revolution coverage of working area
- ✓ Designed for severe offshore conditions — operational in 30 m/s gusts, stowed at 57.7 m/s
- ✓ Compact design — 62 tonne total weight, suitable for re-installation on offshore platforms or vessels
- ✓ Full safety suite — hook load indicator, audible/visual alarms, automatic brake & crown saver
- ✓ Available for inspection immediate availability for purchase

** All specifications are indicative based on manufacturer data and visual inspection. Exact details, certification status, and condition are subject to physical inspection. Sale strictly on as-is, where-is basis.*
