

MURCO RIG 58 SURVEY

18780953-REP
January 16, 2023



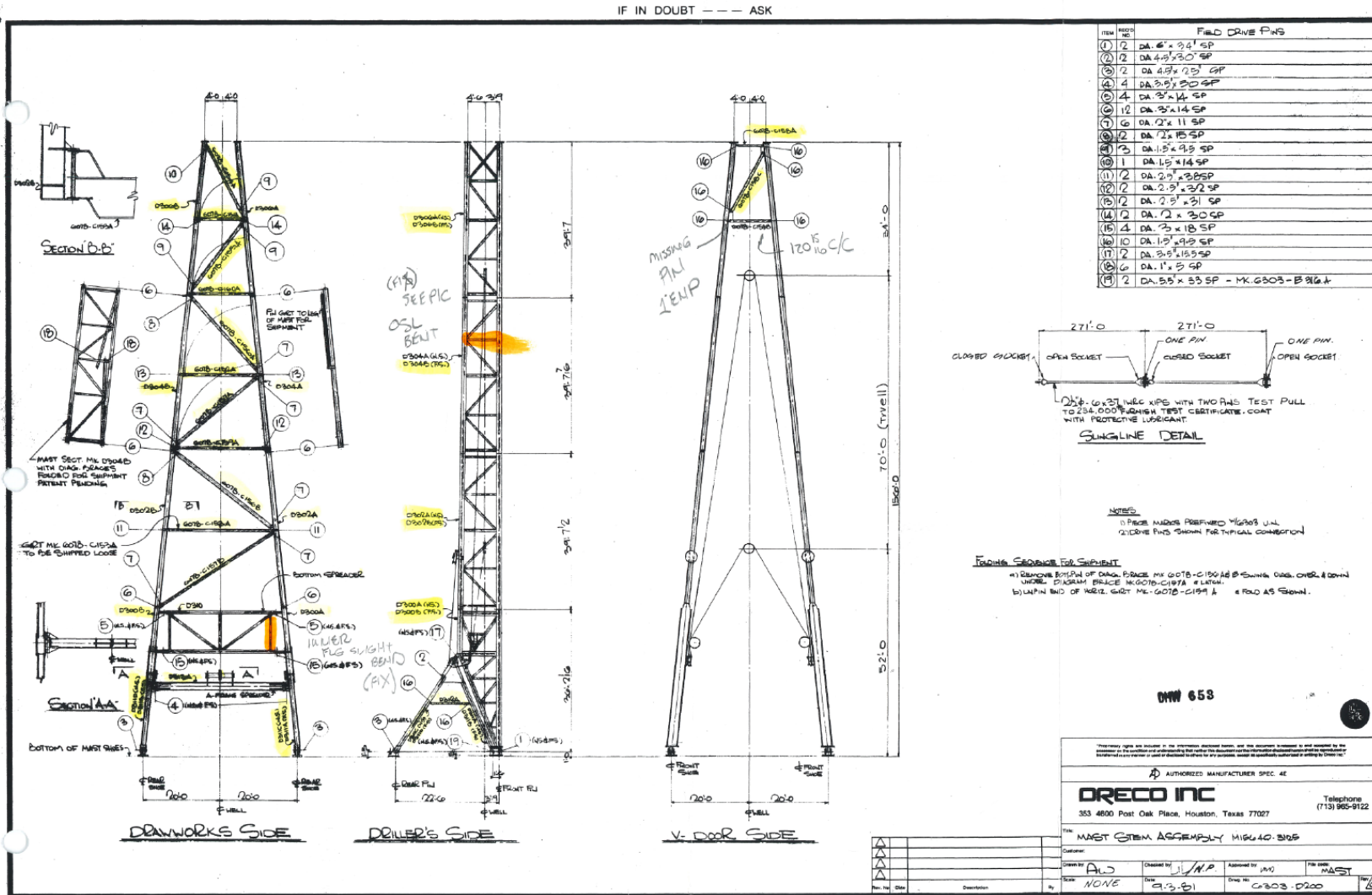
OVERALL MAST



OVERALL MAST LOOKING THRU MAST @ CROWN



MAST STEM ASSEMBLY



MAST PAINT

MAST HAD BEEN RE-TOP COATED WITH A FEW MINOR RUST SPOTS. (THIS WAS AT TOP MAST SECTION)



MAST NAME PLATE



BOTTOM MAST SECTION



LOWER INTERMEDIATE MAST SECTION



UPPER INTERMEDIATE MAST SECTION



TOP MAST SECTION & CROWN

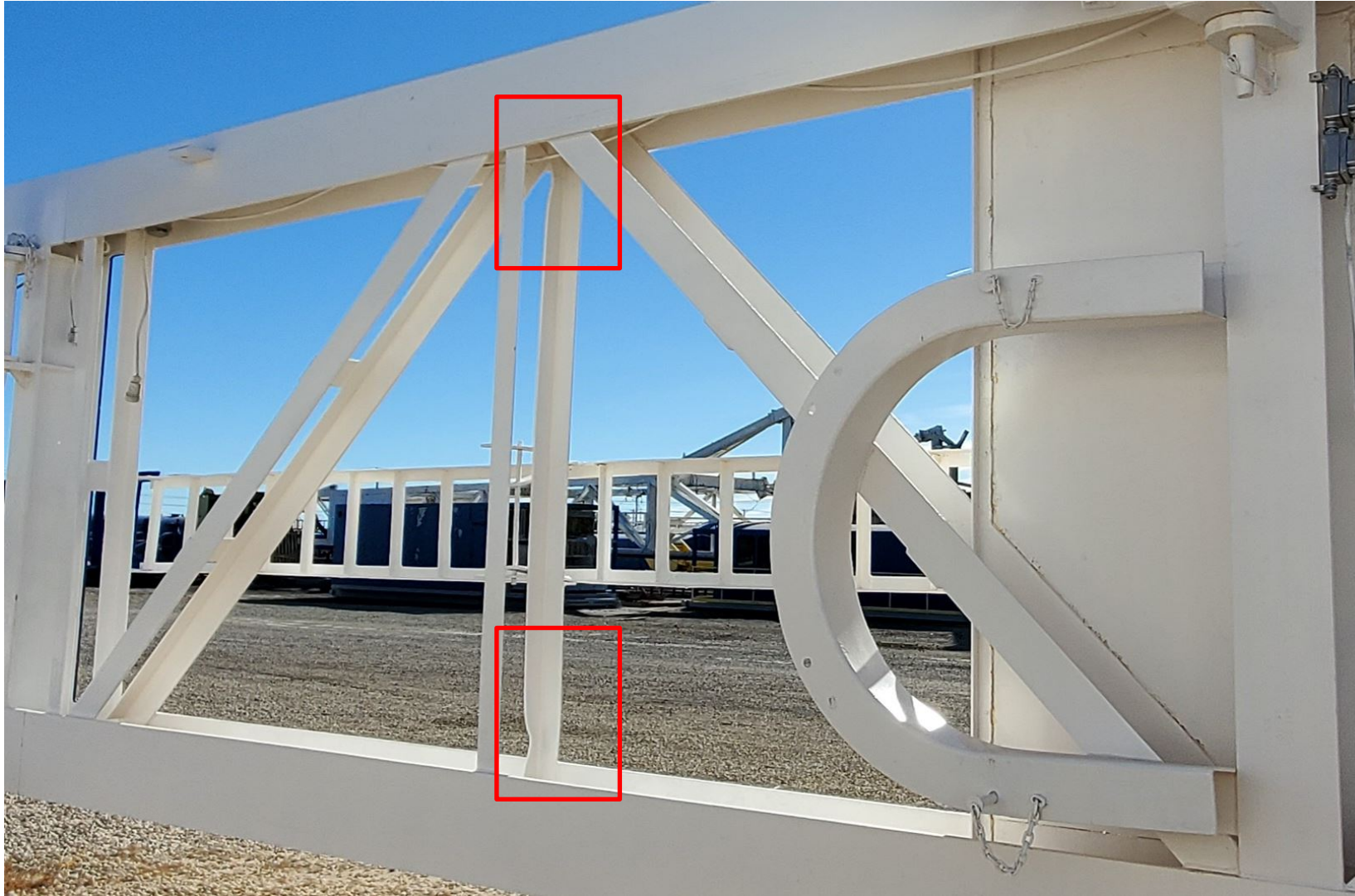


MAST SHOES

BOTH WERE MISSING THE ADJUSTMENT ROD PIN



UPPER INTERMEDIATE MAST SECTION DAMAGE



UPPER INTERMEDIATE WINDWALL DAMAGE

NO DAMAGE TO MAIN MEMBERS ONLY SHEETING



TOP MAST SECTION MISSING GIRT



BOTTOM MAST SECTION SPREADER DAMAGE



A-FRAME ODS

BLEEDING RUST BUT COULD NOT SEE ANY DAMAGE AND COULD NOT CHECK IT AS IT IS A CLOSED SECTION



CROWN NAME PLATE



CROWN HANDRAIL DAMAGE



CROWN CLUSTER INCONSISTANT SHEAVE SPACING

TEXT



MAST RAISING SYSTEM AND LINE



RACKING BOARD W/12' WINDWALL & KNEE BRACES

RACKING BOARD IS CONFIGURED FOR 270 STANDS OF DP NOT THE ORIGINAL 400 STANDS



TUBING BOARD

HANDRAILS ARE MISSING. KNEE BRACES ARE NOT OEM AND NOT PER NOV DRAWINGS



RACKING & TUBING BOARD KNEE BRACES

RACKING BOARD KNEE BRACES ARE OEM; TUBING BOARD BRACES ARE NOT OEM OR PER NOV DESIGN



TONG COUNTERWEIGHTS

ALL 4 BUCKETS ARE THERE BUT NOT THE RIGGING



MAST PINS

ALL PINS WERE THERE BUT I COULD NOT DETERMINE IF THEY WERE OEM OR NOT. PIN HOLES WERE TO SPEC.



MAST LADDERS

LADDERS WERE IN GOOD CONDITION



MAST STANDPIPE

SINGLE 5" ON DRILLERS SIDE DID NOT SEE A STP MANIFOLD



JIB BOOM

MISSING MAST BRACKETS AND SUPPORT LINE



MAST STANDS 2 FIXED AND ONE ADJUSTABLE



SUBSTRUCTURE

BASE AND ELEVATORS BOXES WERE STILL RIGGED UP IN THE SHIPPING POSITION

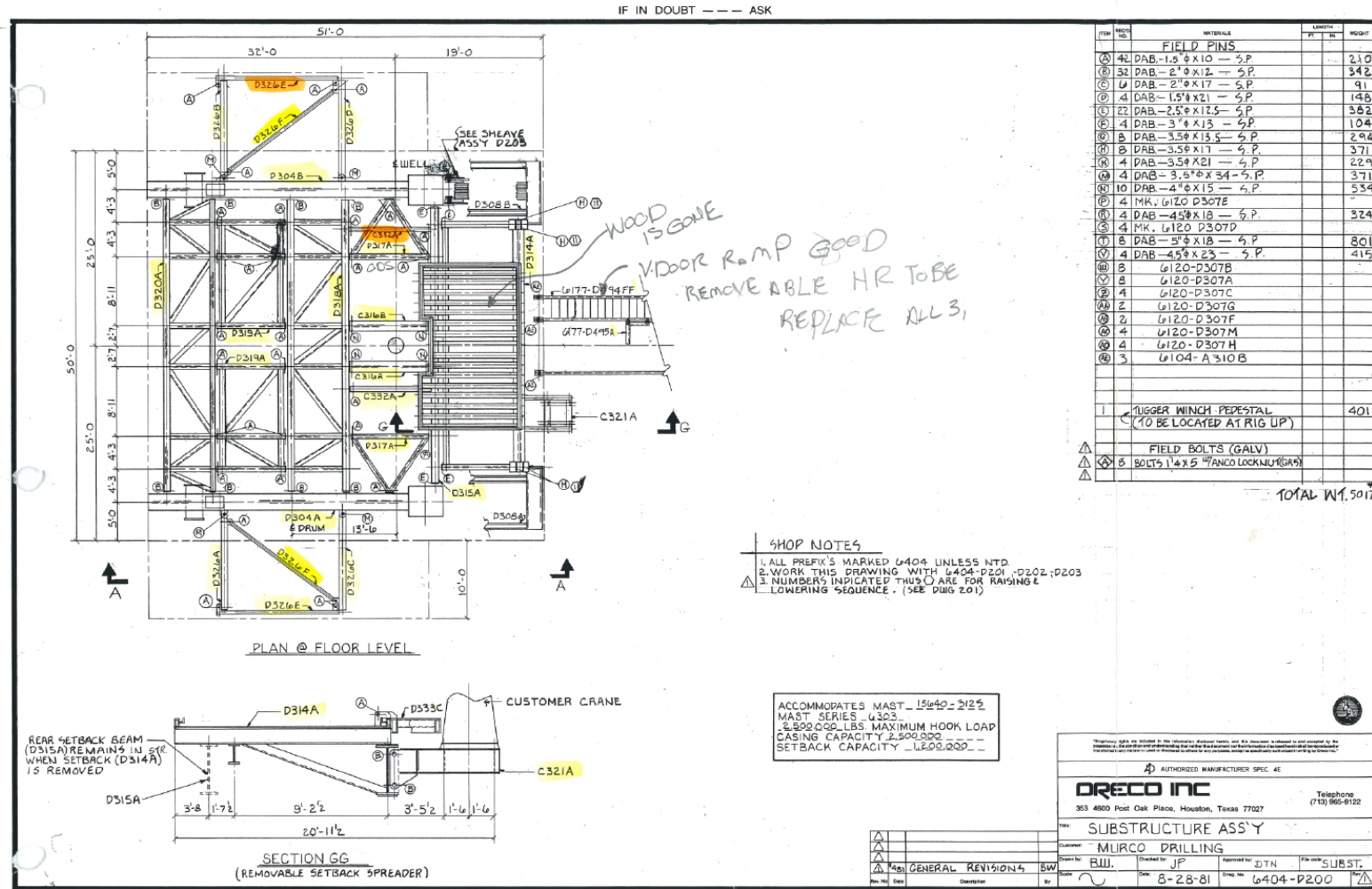


SUBSTRUCTURE

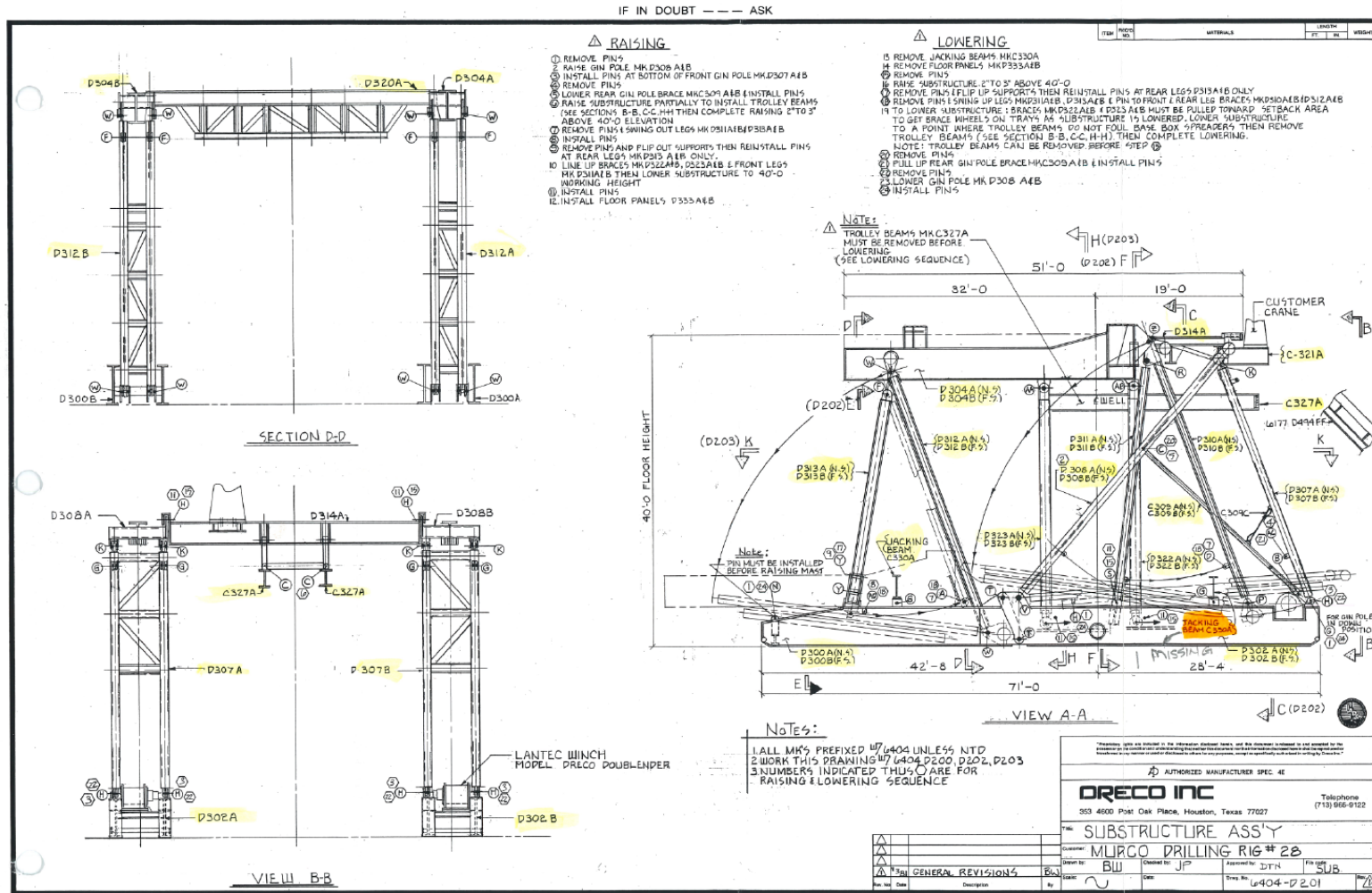


SUBSTRUCTURE ASSEMBLY

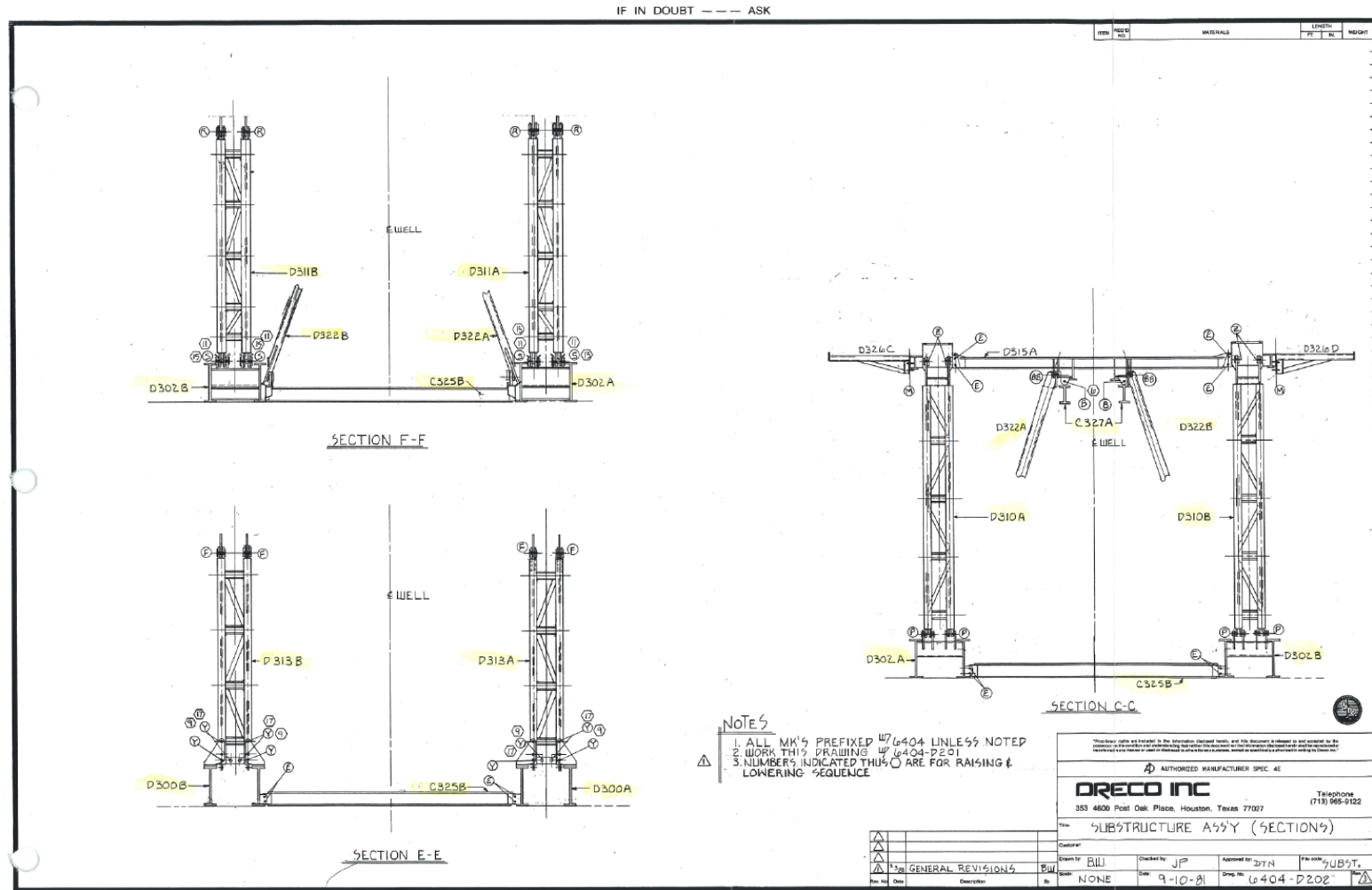
ITEMS IN ORANGE COULD NOT BE LOCATED (ASSUMED TO BE MISSING)



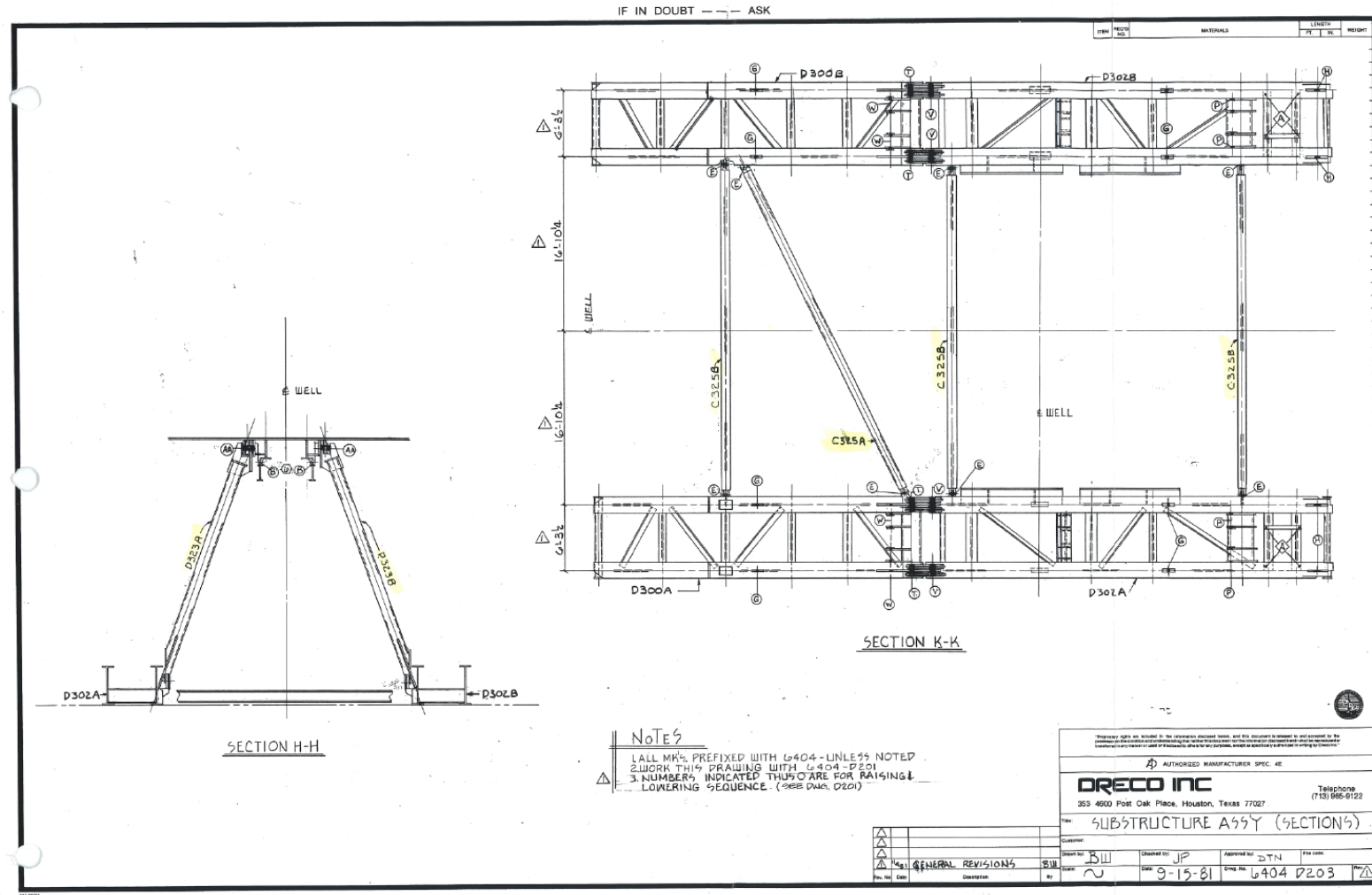
SUBSTRUCTURE ASSEMBLY



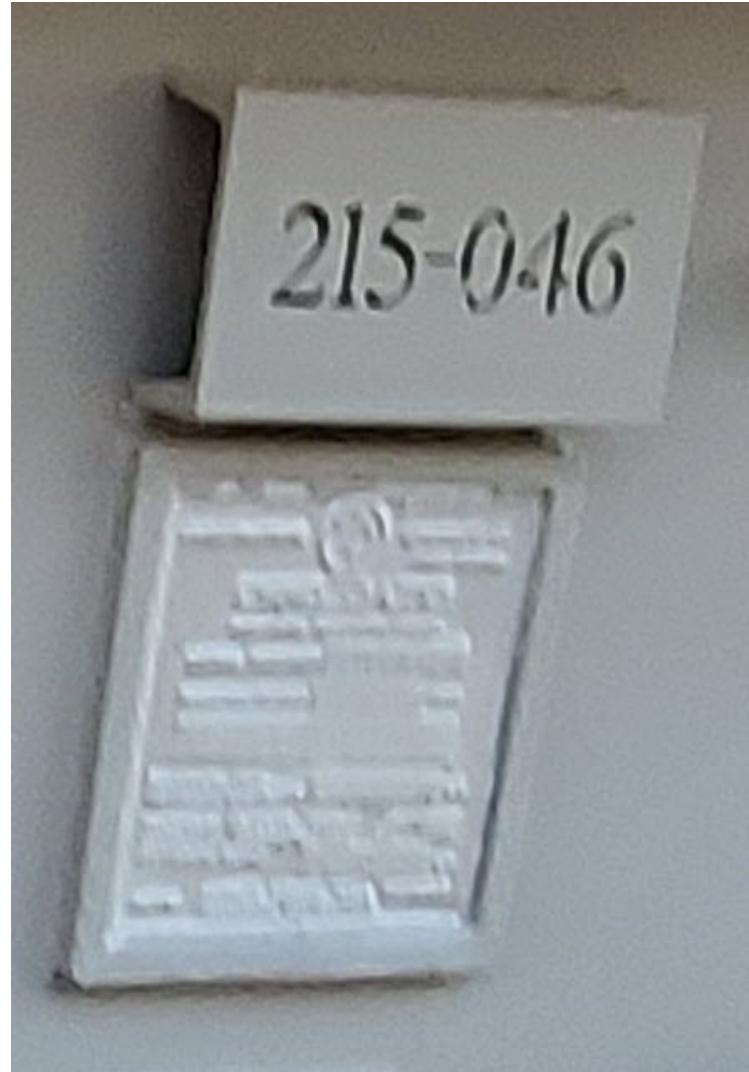
SUBSTRUCTURE ASSEMBLY



SUBSTRUCTURE ASSEMBLY



SUBSTRUCTURE NAMEPLATE



SETBACK SPREADER

WOOD NEEDS TO BE REPLACED AND MINOR SURFACE RUST



SETBACK SPREADER



SUBSTRUCTURE SPREADERS



SUBSTRUCTURE SPREADERS



SUBSTRUCTURE SPREADERS



SUBSTRUCTURE SPREADERS



SUBSTRUCTURE SPREADERS



SUBSTRUCTURE DIAGONAL BRACES



SUBSTRUCTURE ROTARY BEAMS



SUBSTRUCTURE GIN POLES

GIN POLE LEGS ARE BOWED UP AND THE COUNTER BRACES ARE BOWED DOWN AROUND A PIN IN THE CENTER. I CANNOT DETERMINE IF THE LEGS WILL BE LIKE THIS PERMANENTLY OR IF THEY WILL RETURN TO NORMAL AFTER THE LOAD IS RELEASED. THREE OF THE FOUR LEGS ARE JUST BOWED UP AND ONE IS BOWED UP AND TWISTED DUE TO AN INCORRECT PIN BEING USED AND THE PIN TAPER IS IN THE WAY. I FEEL LIKE THIS WAS CAUSED BY THE IMPROPER RIG DOWN OF THE GIN POLE LEGS.

GIN POLE LEGS



GIN POLE LEGS



GIN POLE LEGS



BASE BOX FIELD MODIFICATION

THE CUTOUT STIFFENER IS NOT PER PRINT NOR WAS IT APPROVED BY ENGINEERING. NOT SURE WHY THIS WAS MODIFIED BUT I CAN ASSUME IT WAS FOR RIG-UP,

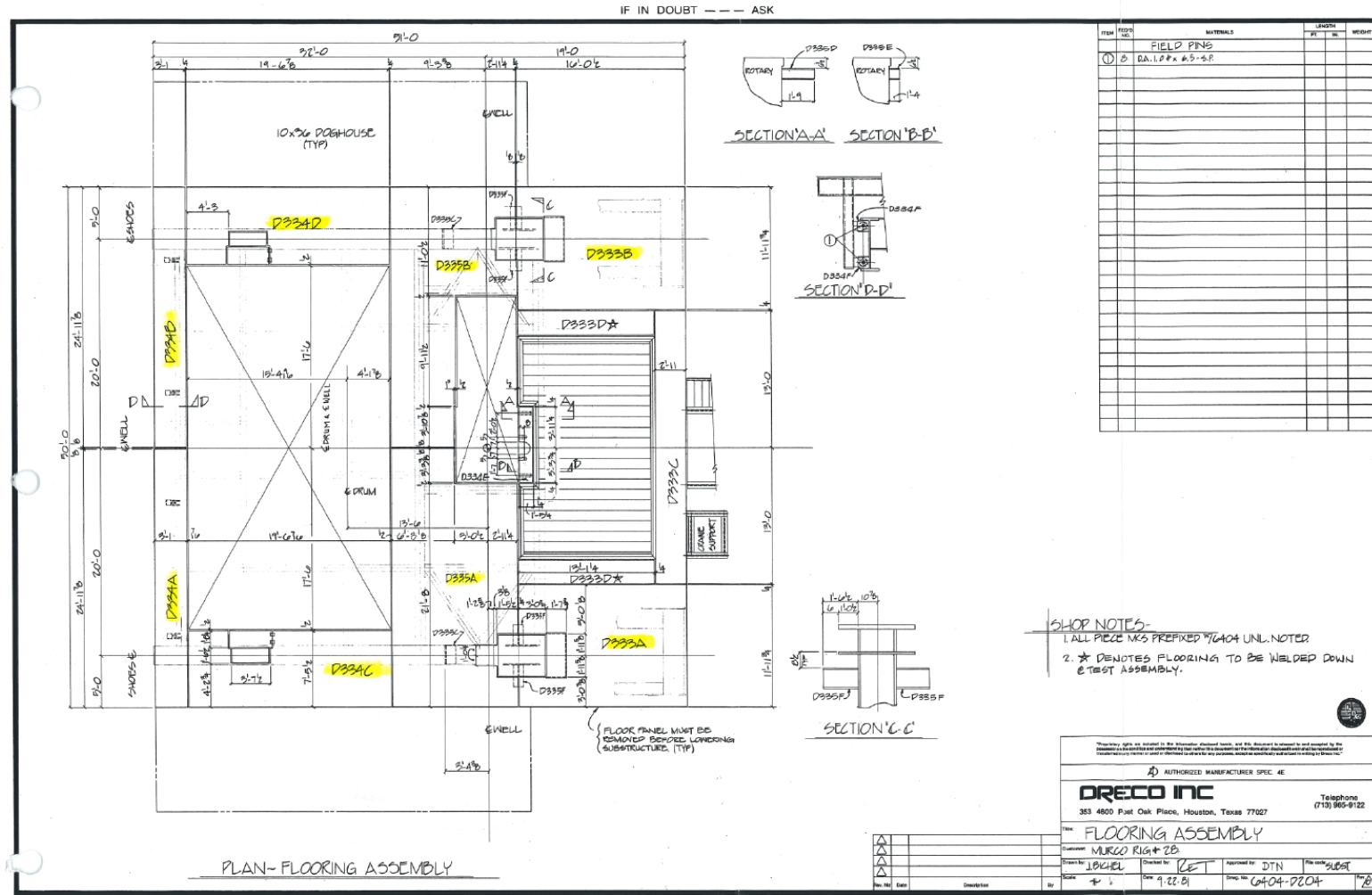


SUBSTRUCTURE JACKING BEAM

2 CAME WITH RIG ORIGINALLY BUT ONLY ONE WAS FOUND. SHOULD BE BLASTED AND INSPECTED



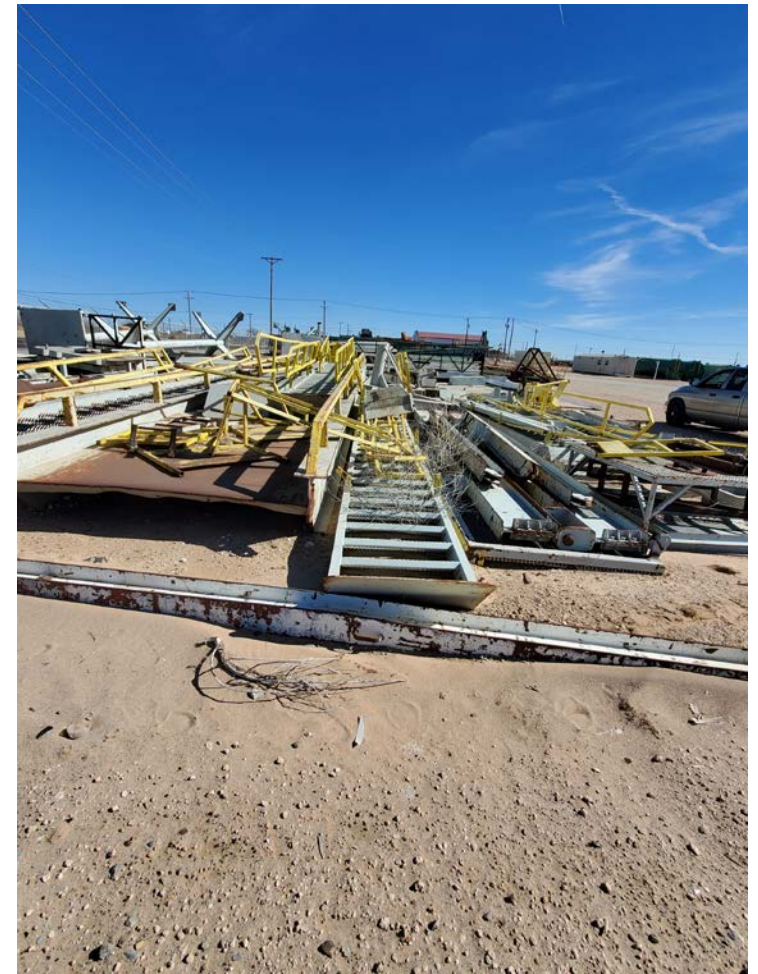
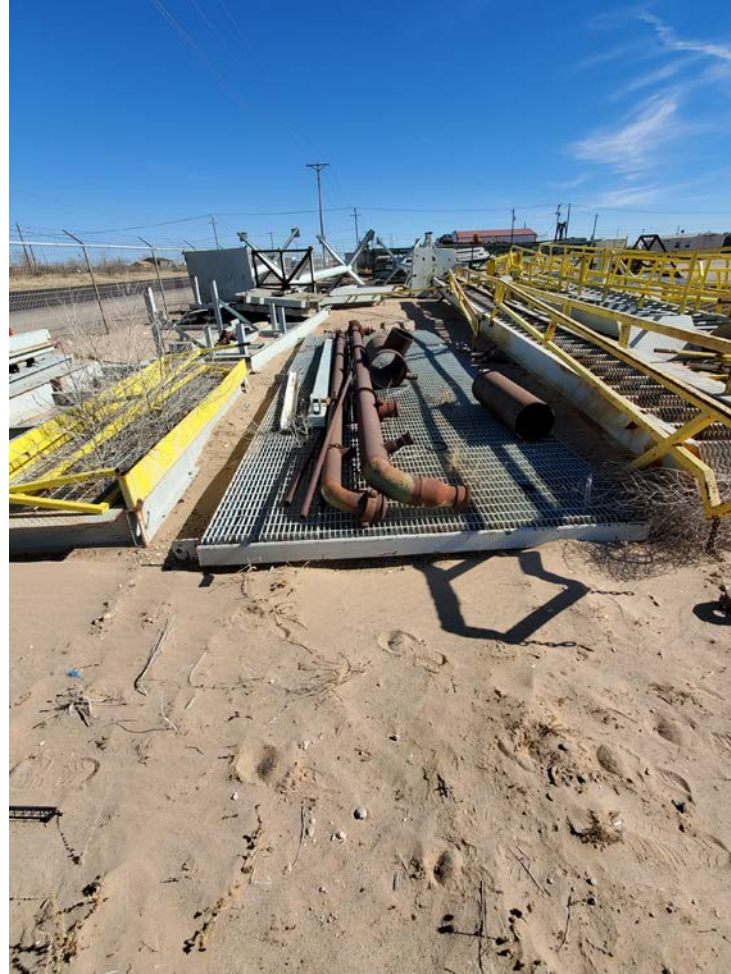
SUBSTRUCTURE FLOORING ASSEMBLY



SUBSTRUCTURE MISC AND MAST STANDS, FLOORING, STAIRS, TROLLEY BEAMS, DOGHOUSE BRACES



SUBSTRUCTURE MISC AND MAST STANDS, FLOORING, STAIRS, TROLLEY BEAMS, DOGHOUSE BRACES



SUBSTRUCTURE CRANE



BECKET



HOOK BLOCK



SLINGLINE EQUALIZER



ROTATING MOUSEHOLE



RIG REVIEW

- Overall, the rig is in good shape.
- The mast had been re-top coated in the near past.
- There was one missing girt and tubing board knee braces.
- There was one bent angle in the upper mast section and one bent flange in the bottom mast section spreader
- The substructure could use a new coat of paint.
- I did not see any major damage to the structure.
- I could not see the interior of the base boxes but do not suspect there is any hidden damage based on the condition of the rest of the rig.
- There was one missing spreader, doghouse link brace and one jacking beam. The rig came with 2 of each.
- I cannot tell if the pins that were there were the one that came with the rig originally.

RIG REVIEW

- Most of the floor panels are there, all the larger pieces as marked in yellow on the flooring assembly .
- The mast pin on windwalls were there in a shipping frame. I am not sure if they all there or the real condition, but they seemed complete and decent condition.
- The substructure gin pole legs are bowed up and the counter braces are bowed down around a pin in the center. I cannot determine if the legs will be like this permanently or if they will return to normal after the load is released. Three of the four leg are just bowed up and one is bowed up and twisted due to a incorrect pin being used, and the taper is in the way. I feel like this was caused by the improper rig down on the gin pole legs.
- There was also a non- oem false rotary that will come with the rig.
- V-door ramp removable handrail will need to be replaced as they were damaged when a truck ran through the fence and hit them.
- I did not try to identify the drill floor handrails as most will need to be replaced

RIG REVIEW

- The objective of this survey report is to provide a summary of the rig parts identified. Comments on the condition of the parts are generalized and are not intended as a recommendation on useability. A Category inspection following the API RP 4G guidelines is recommended to explore the detailed condition of the rig and its individual components.

